

Supporting information

Jiayu Alexander Liu, Siyuan Chen, Ningyue Mao, Elahe Cheraghi, Yonghai Sun,
Jiaqi Wang,
John T.W. Yeow

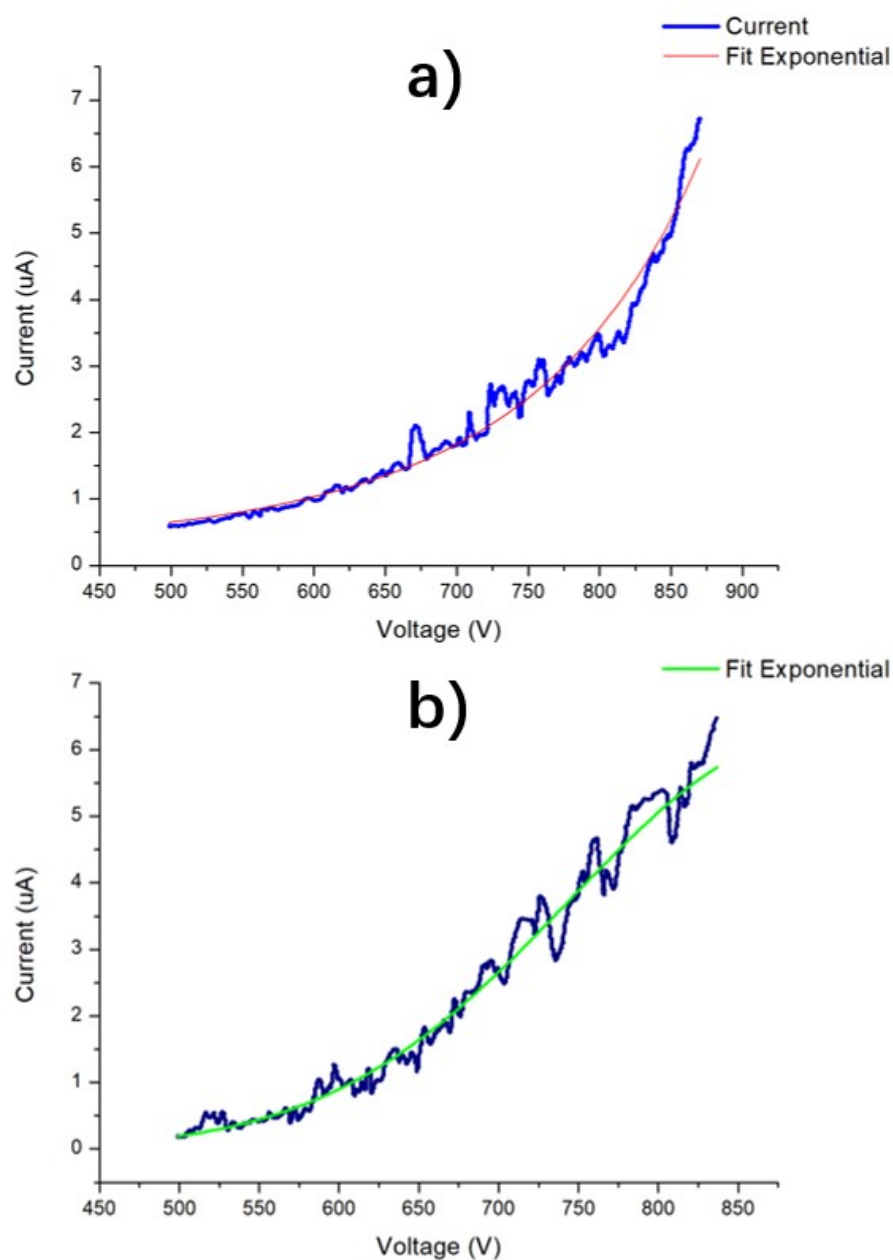


Fig 1. IV curve of a) the first approach, b) the second approach.

The relationship between current and voltage is exponential which follows the F-N equation.

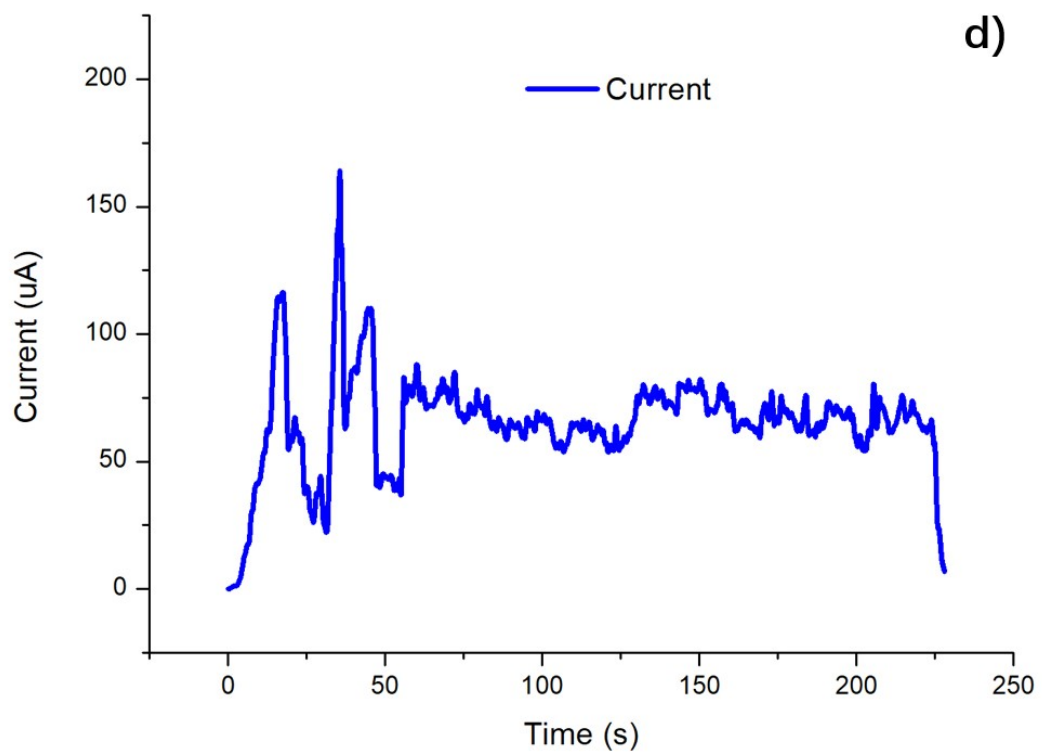
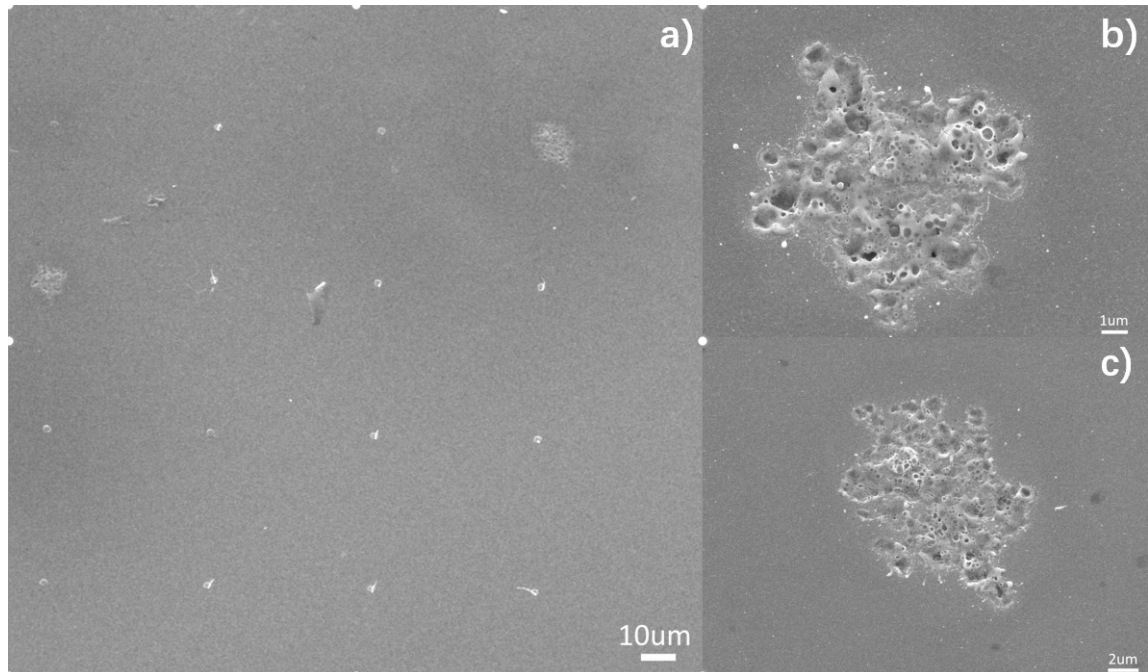


Fig. 2 SEM image of crater caused by Coulomb explosion in the first approach. a) the image of the whole 4 X 4 array. b), c) the image of the craters. d) the change of emission current in the second approach during Coulomb explosion, the highest peak is the time when three continuous explosions occur.

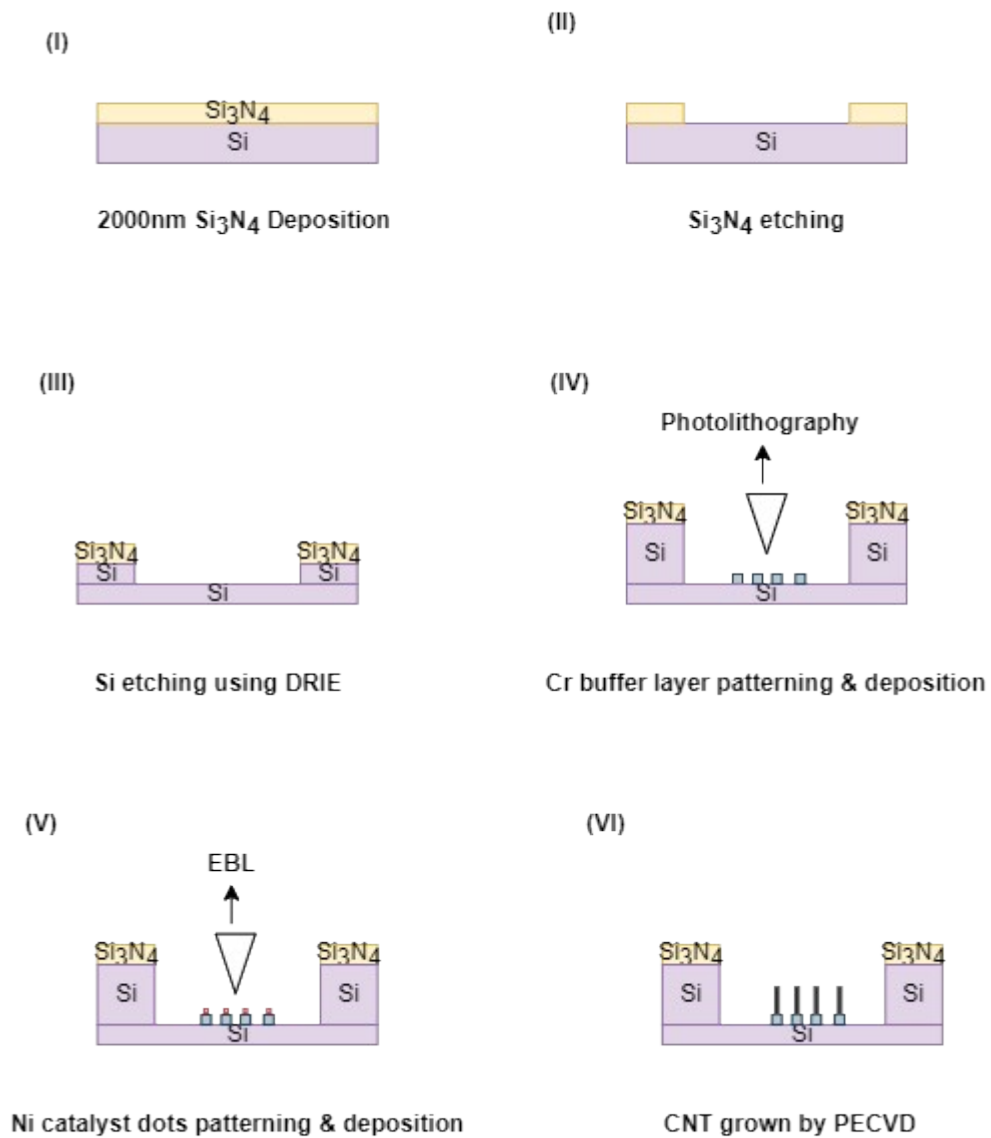


Fig. 3 Schematic diagram of fabrication process flow of CNT field emitter.