

Machine learning study on superlattice electron blocking layer design for AlGaIn deep ultraviolet light-emitting diodes using the stacked XGBoost/LightGBM algorithm

Rongyu Lin,^{a,†} Zhiyuan Liu,^{a,†} Peng Han,^b Ronghui Lin,^a Yi Lu,^a Haicheng Cao,^a Xiao Tang,^a Chuanju Wang,^a Vishal Khandelwal,^a Xiangliang Zhang,^{*b,c} and Xiaohang Li ^{*a}

a. Advanced Semiconductor Laboratory, Computer, Electrical and Mathematical Sciences and Engineering Division, King Abdullah University of Science and Technology (KAUST), Thuwal 23955-6900, Kingdom of Saudi Arabia.

b. Laboratory Machine, Intelligence and Knowledge Engineering (MINE), Computer, Electrical and Mathematical Sciences and Engineering Division, King Abdullah University of Science and Technology (KAUST), Thuwal 23955-6900, Kingdom of Saudi Arabia.

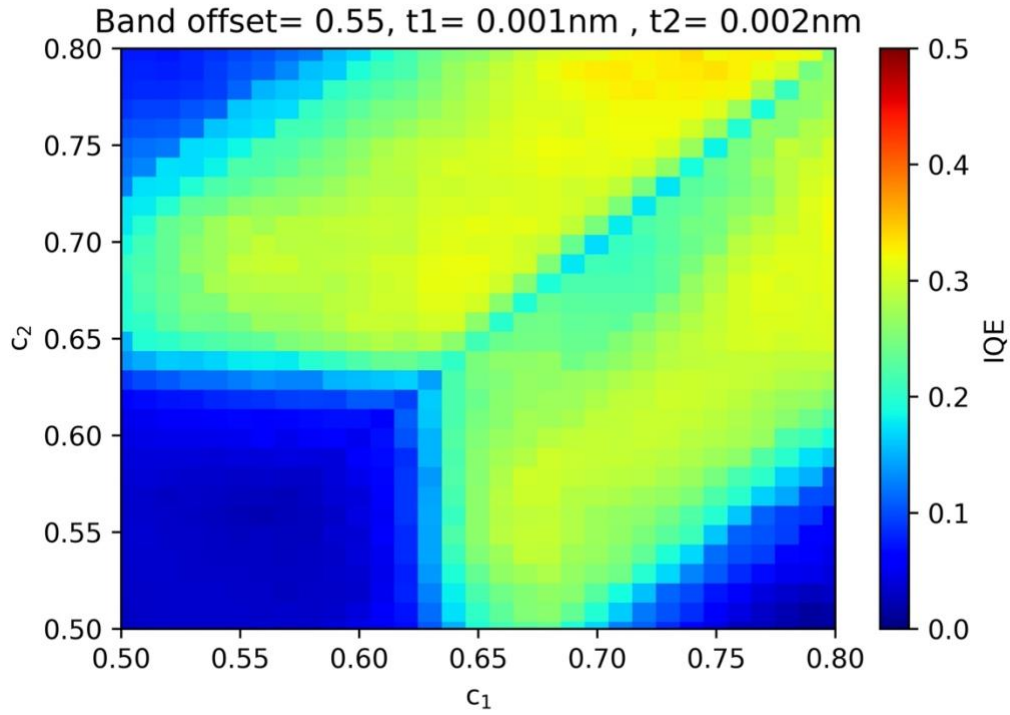
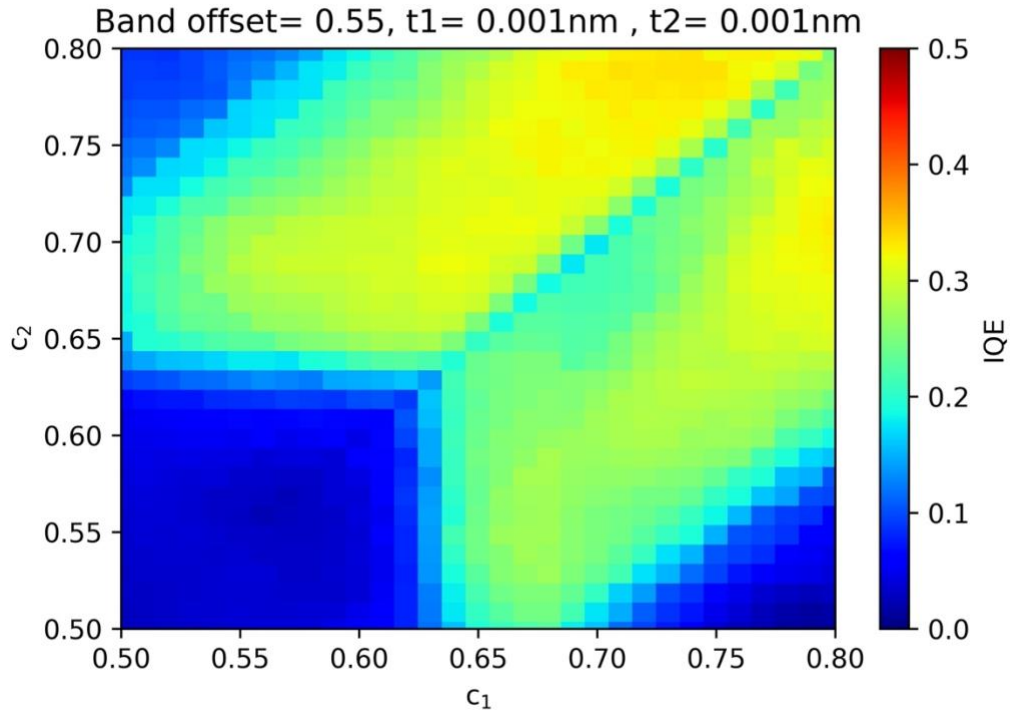
c. Department of Computer Science and Engineering, University of Notre Dame, Notre Dame, IN 46556, USA

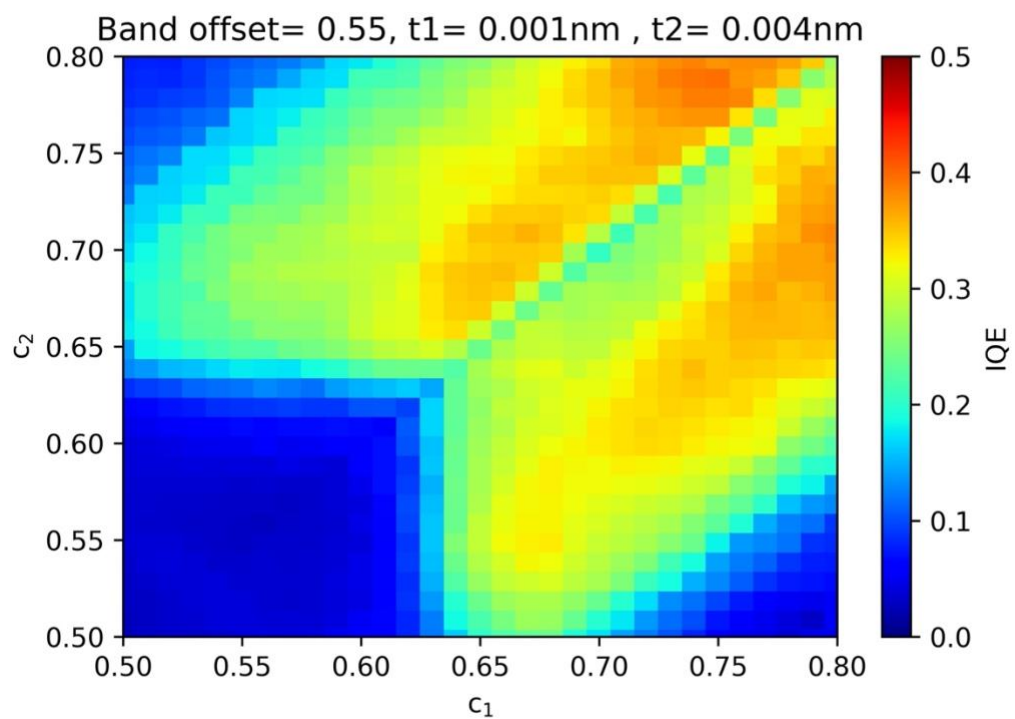
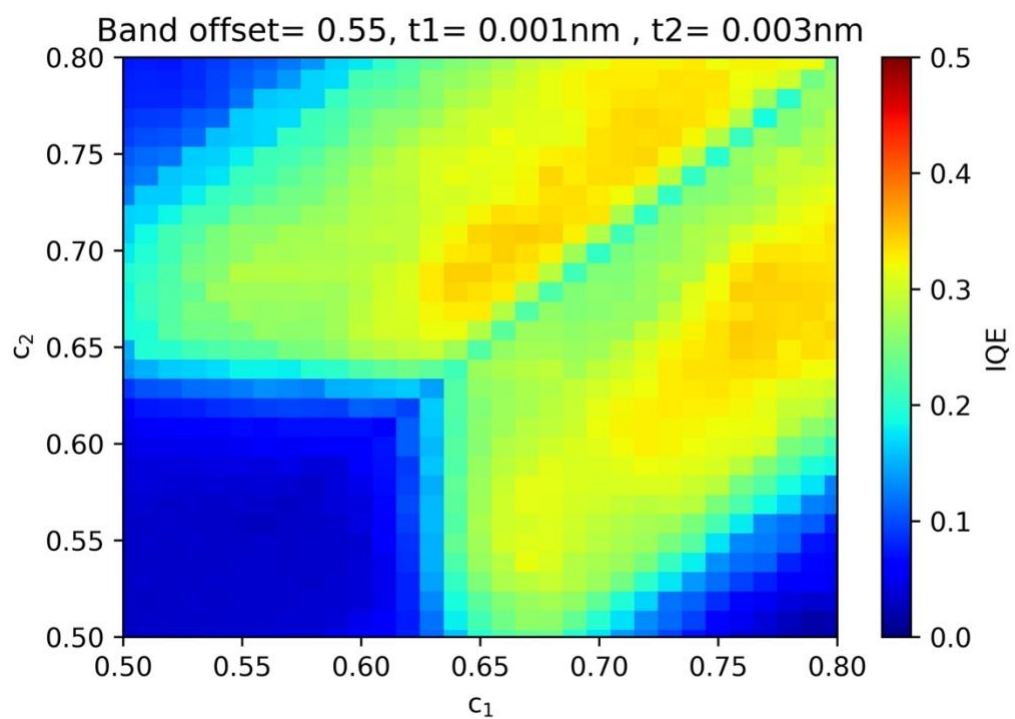
† These authors contributed equally.

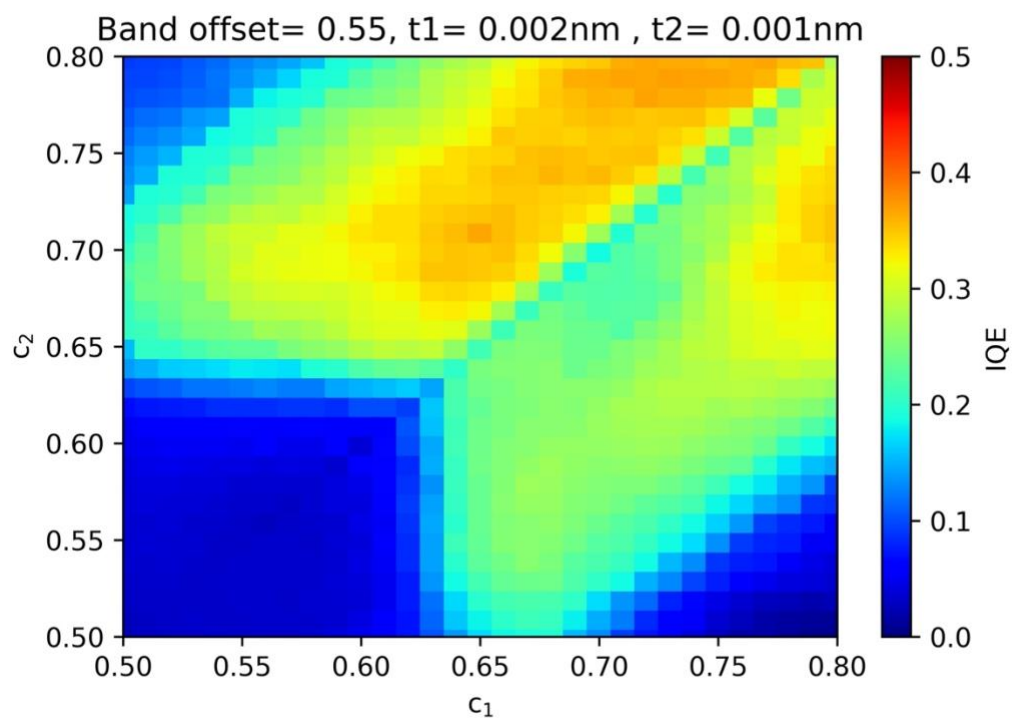
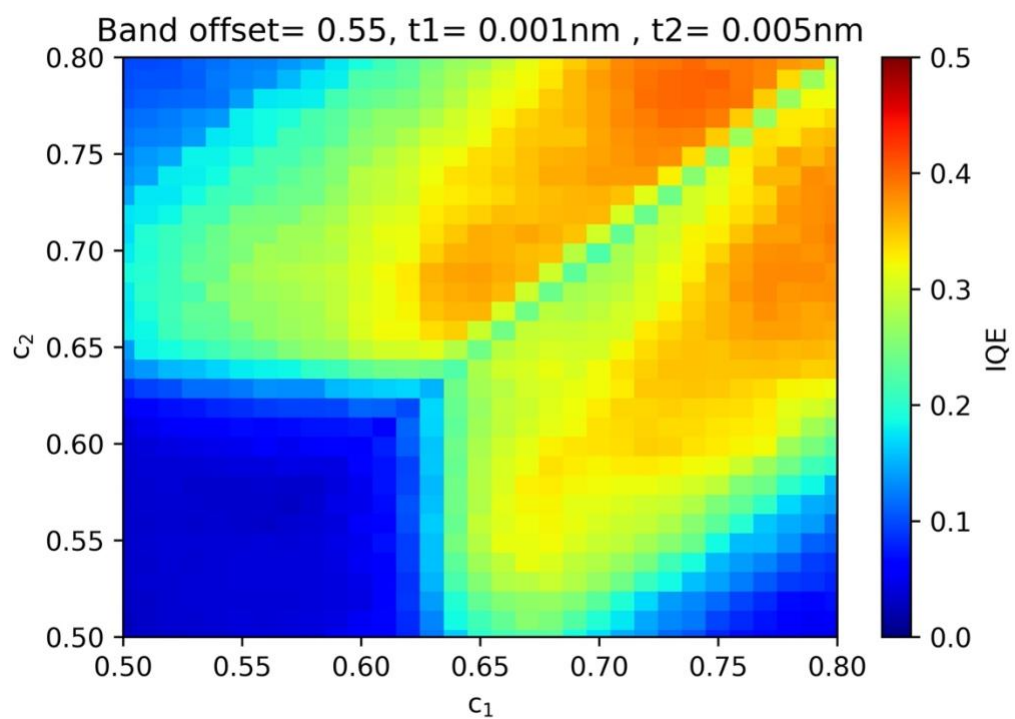
*Corresponding author.

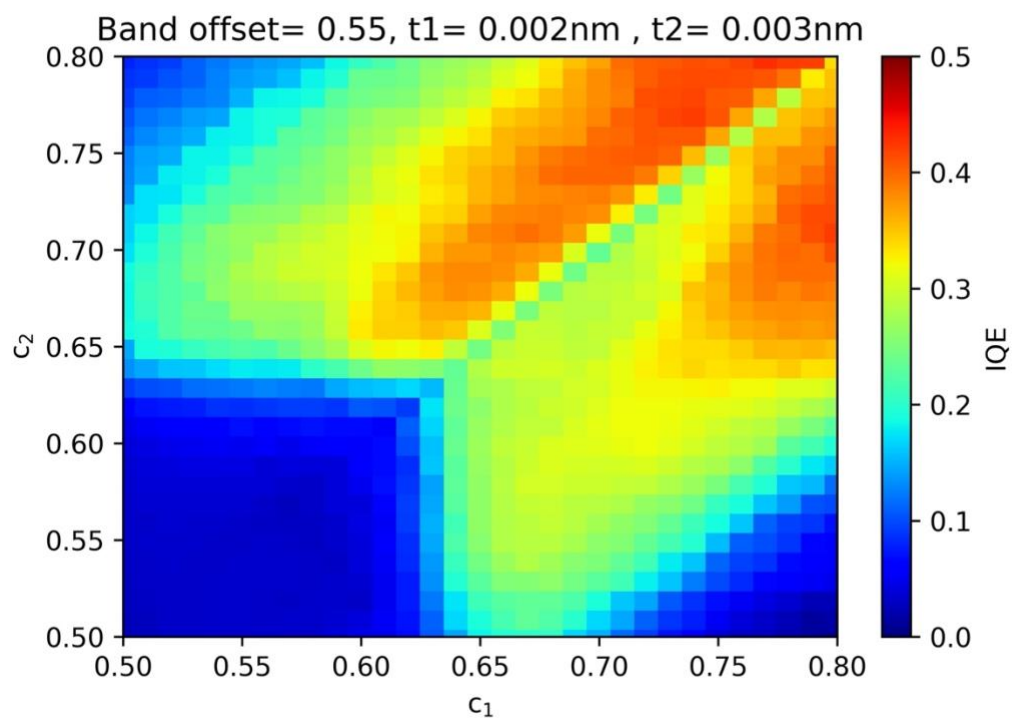
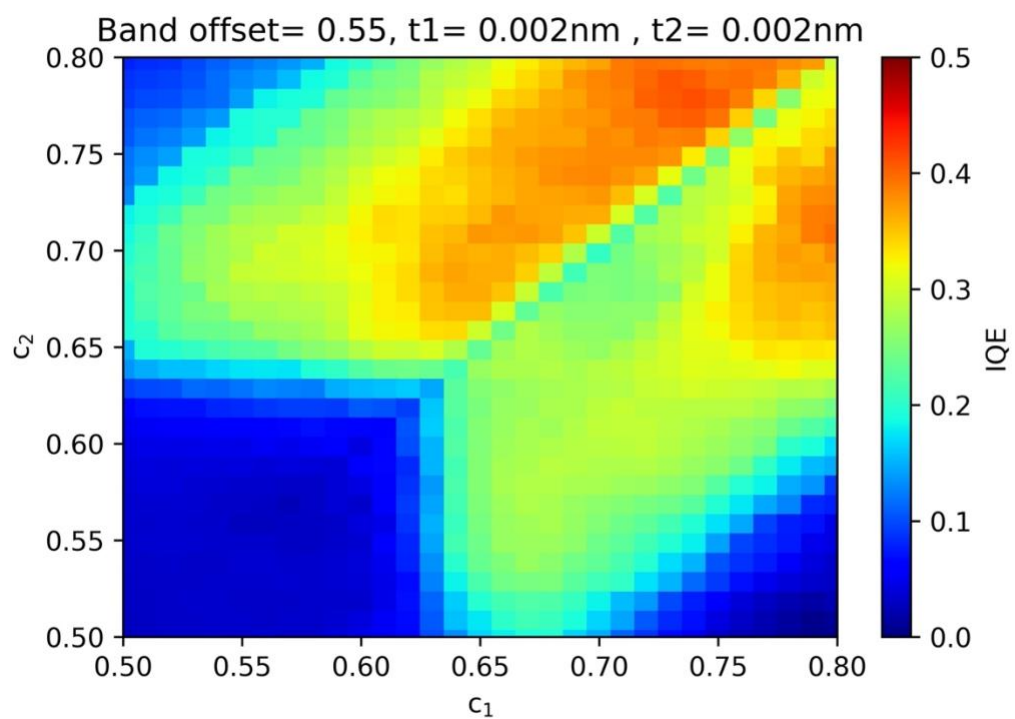
* xzhang33@nd.edu and xiaohang.li@kaust.edu.sa

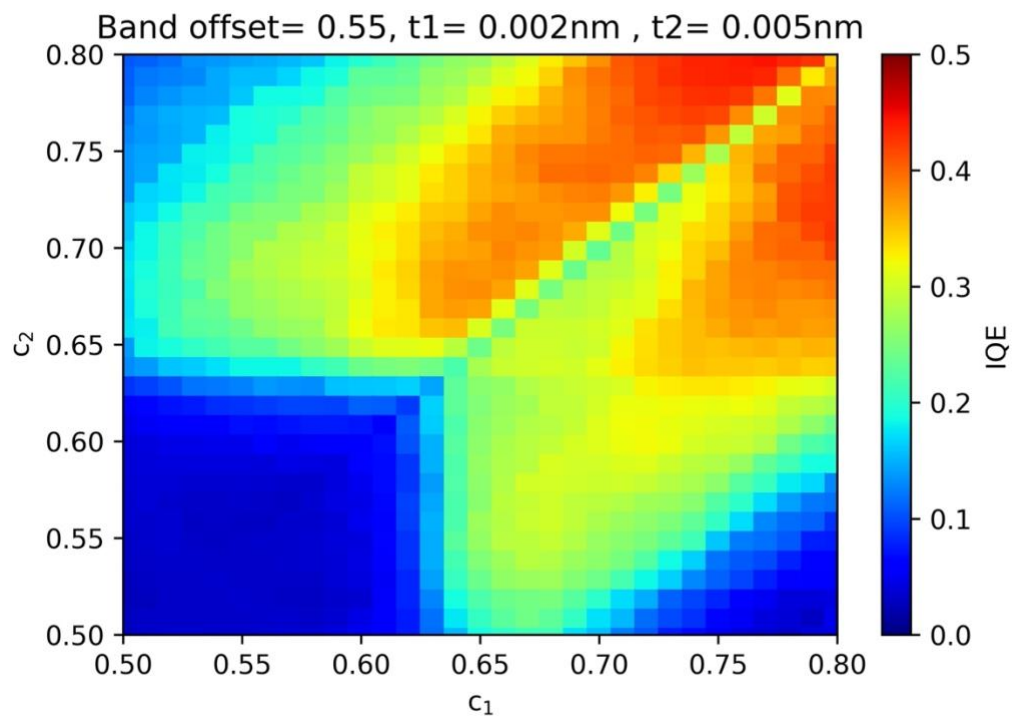
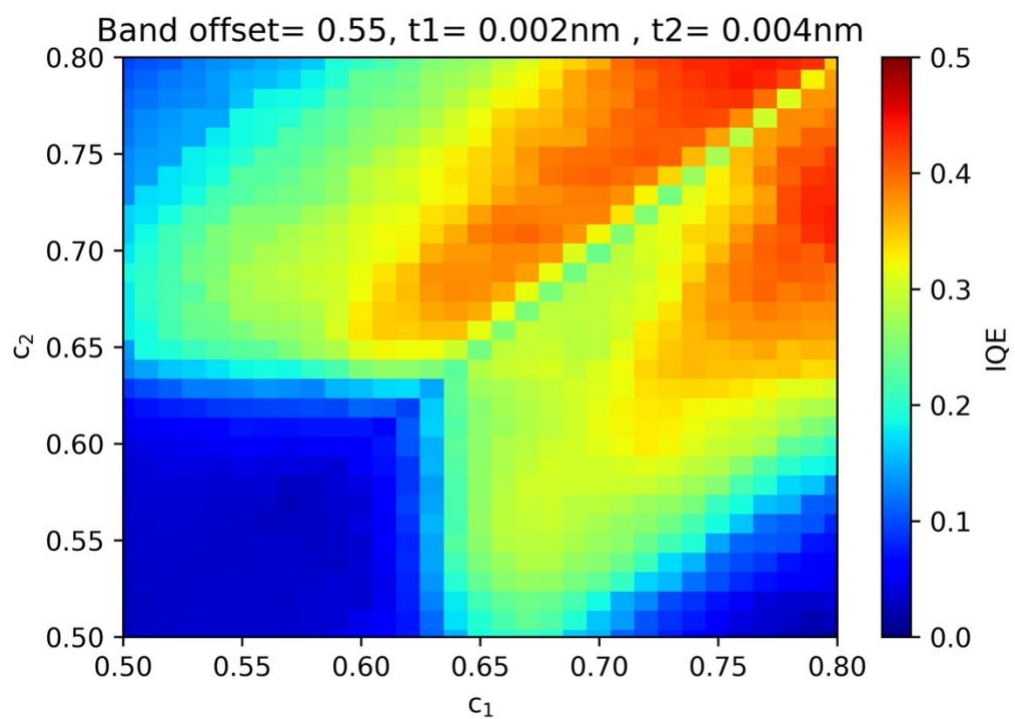
S1. Internal quantum efficiency (IQE) predictions from stacked XGBoost/LightGBM model of superlattice (SL) electron blocking layer (EBL) with different composition combinations under the band offset ratio = 0.55.

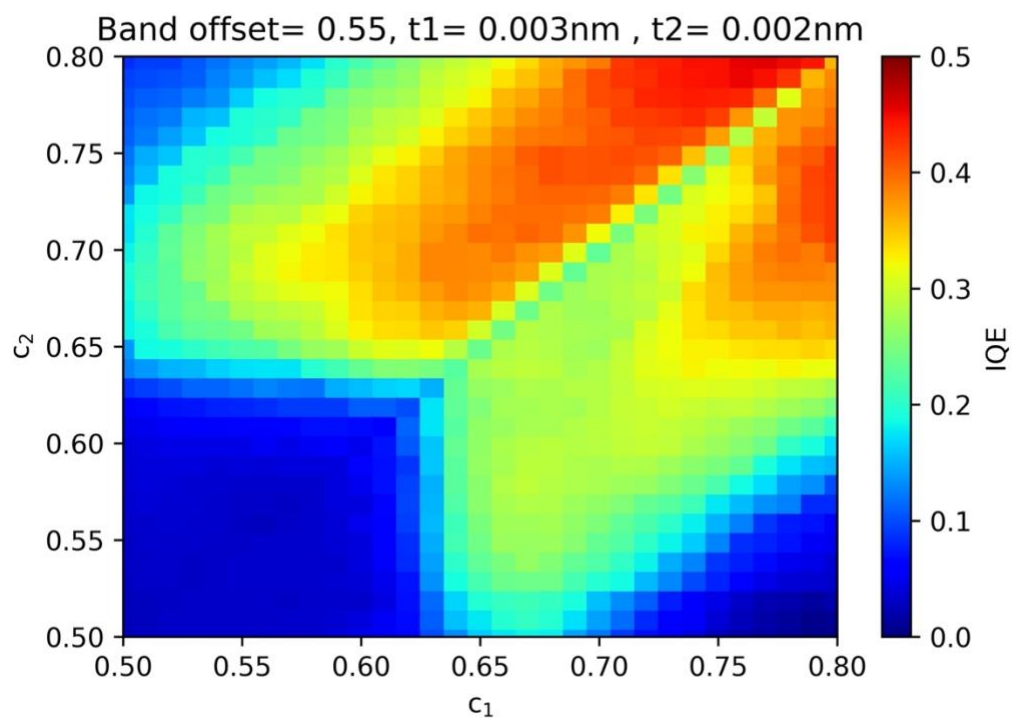
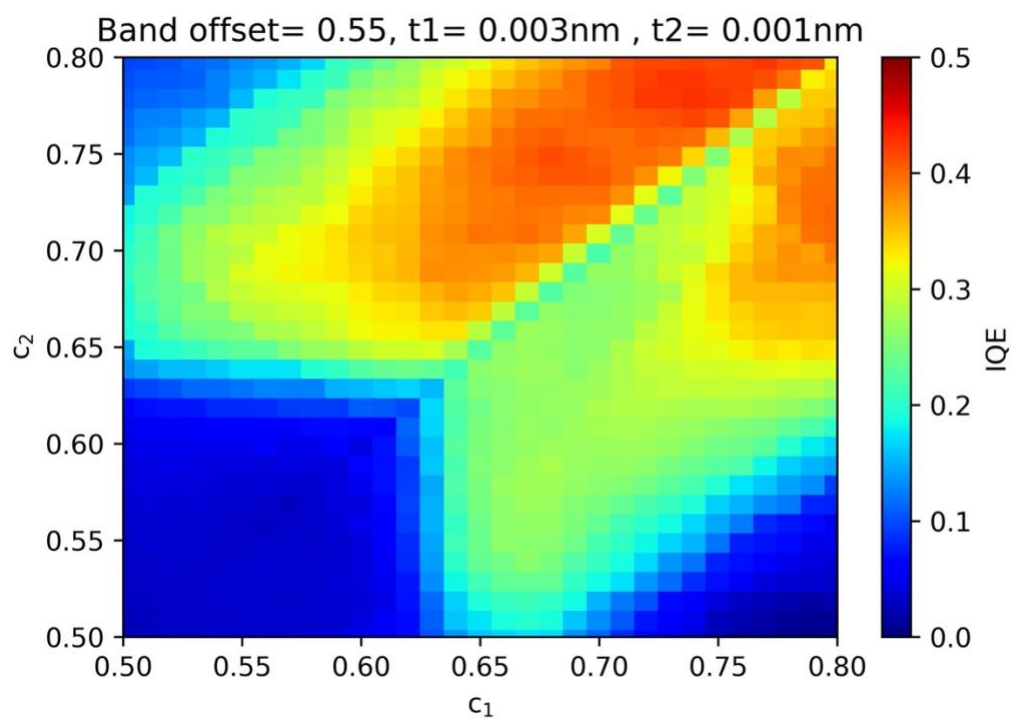


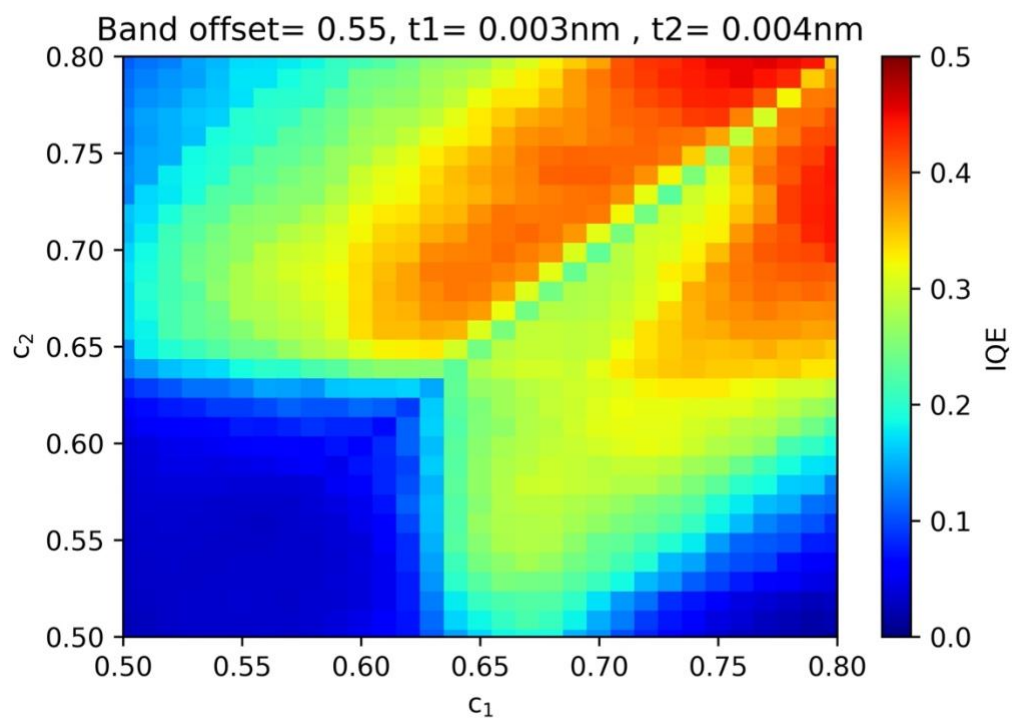
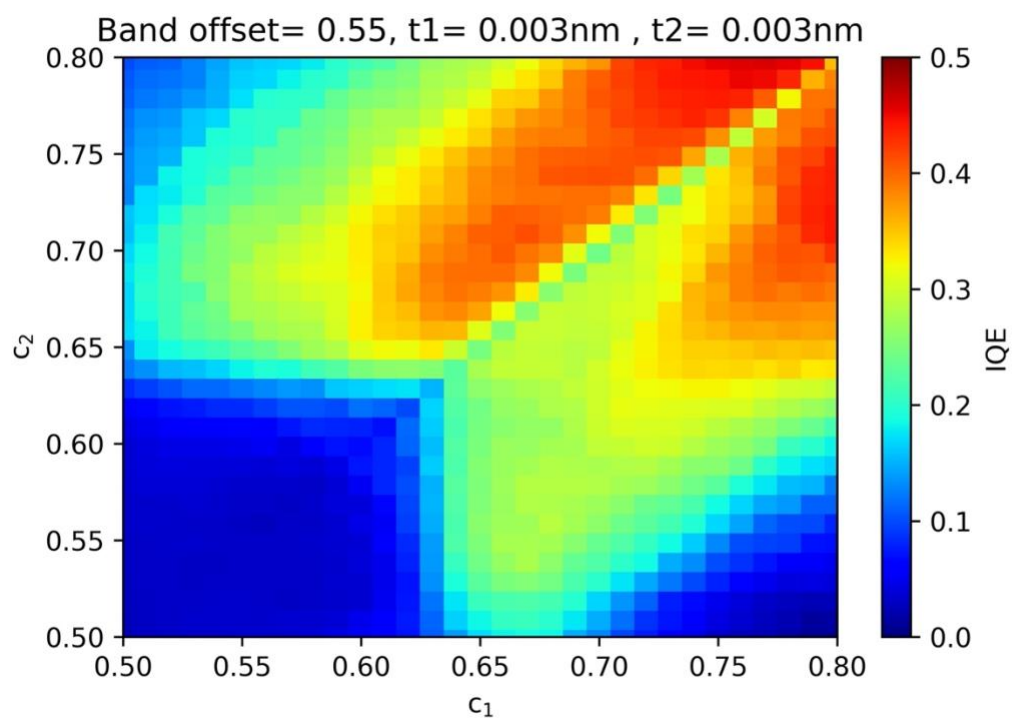


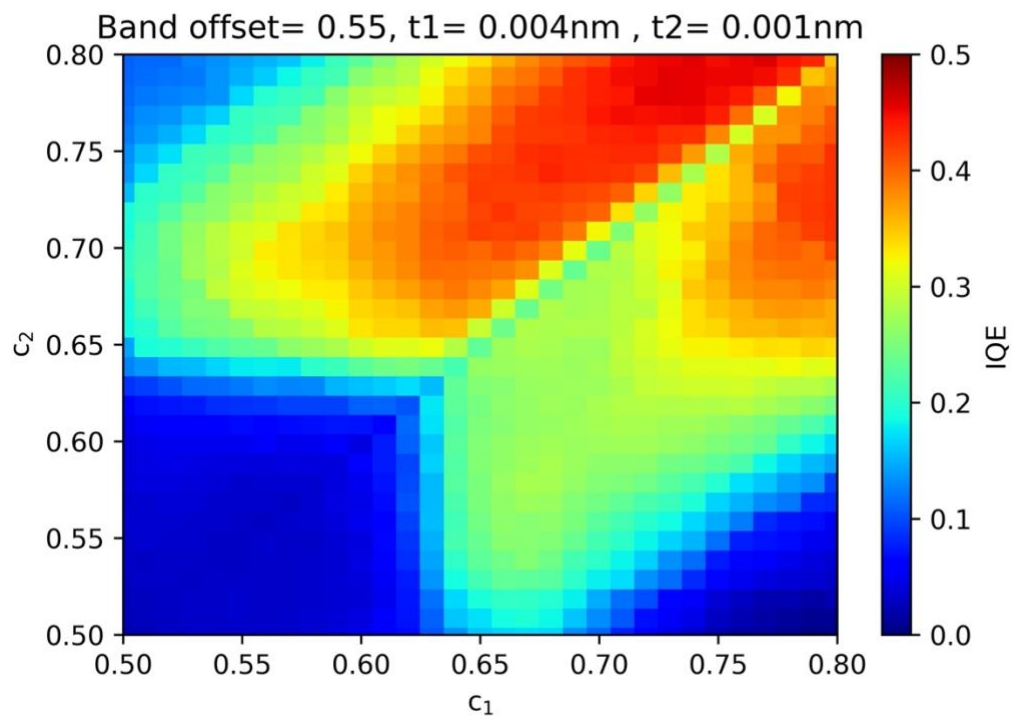
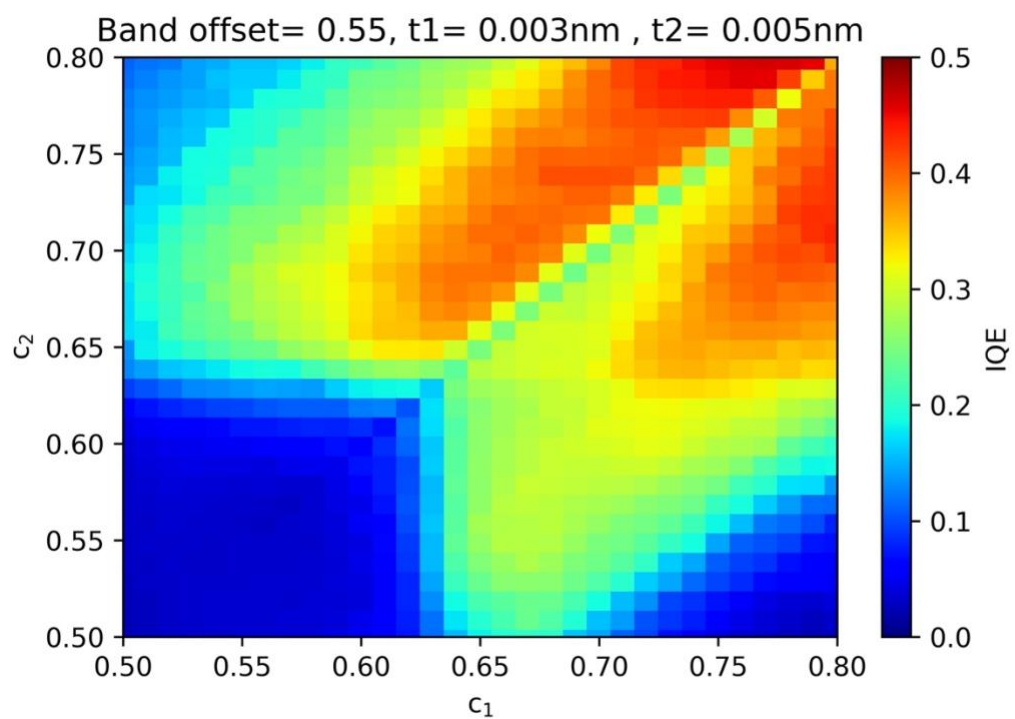


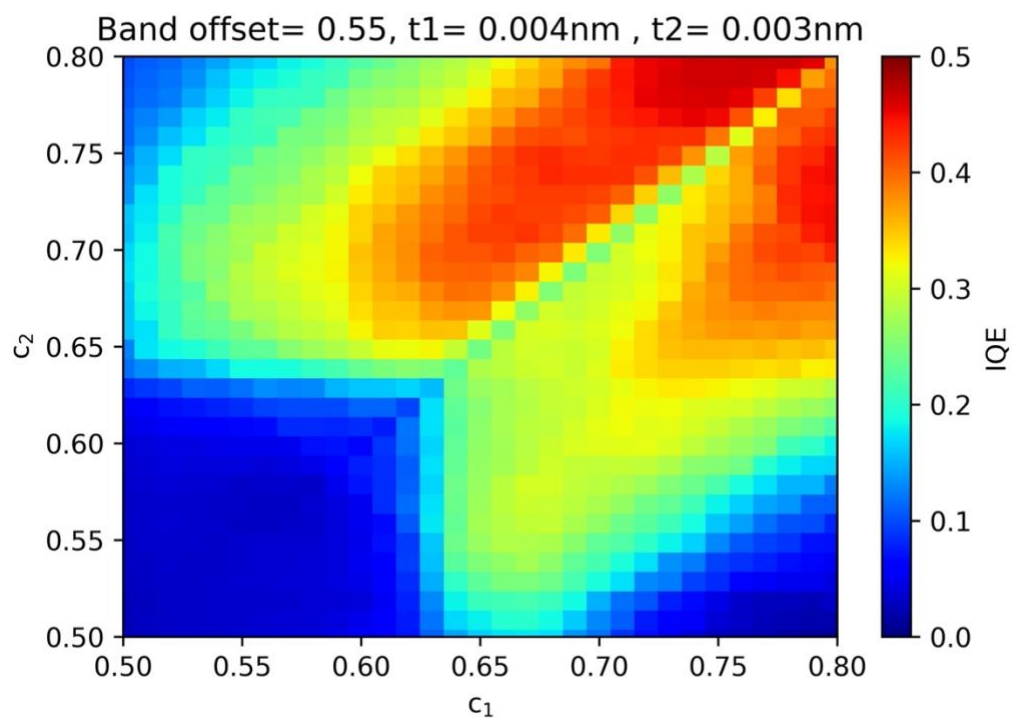
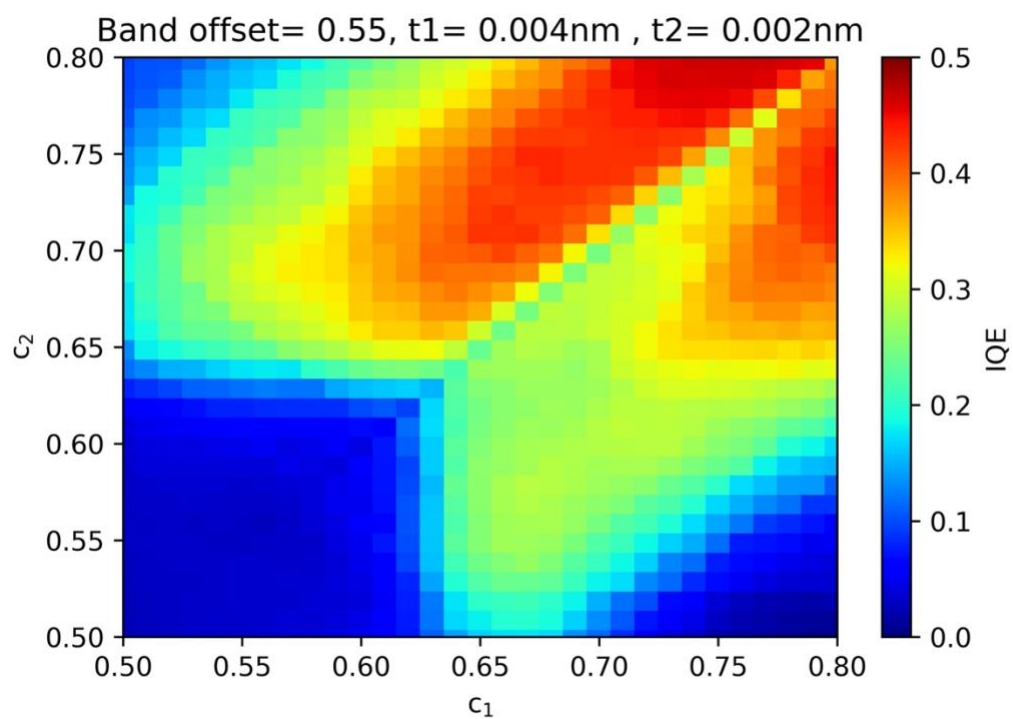


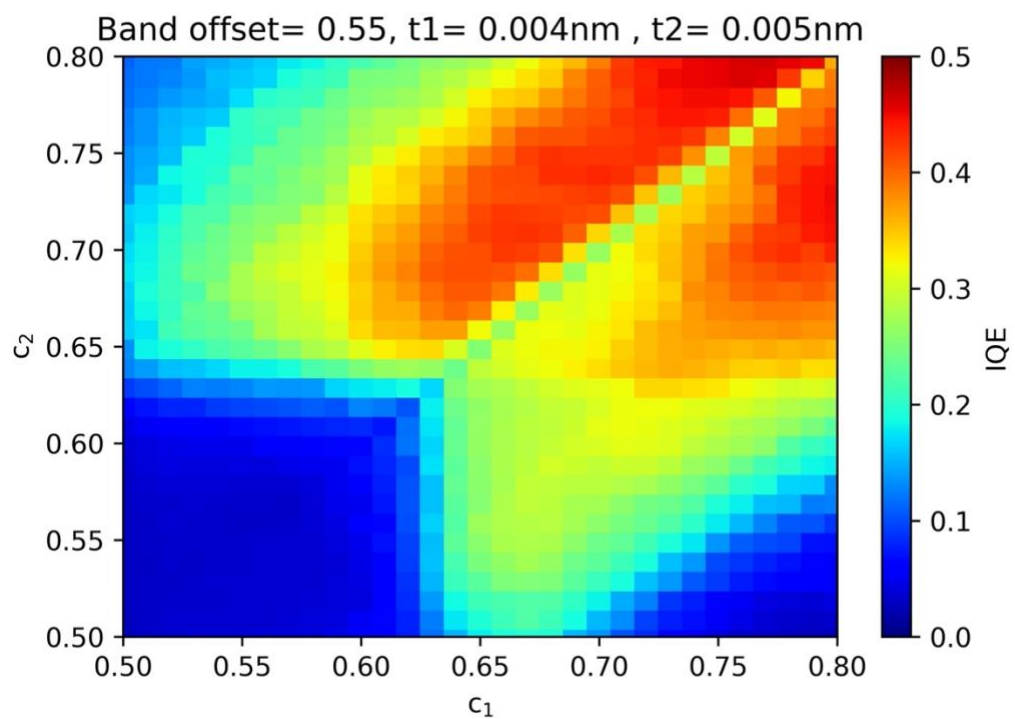
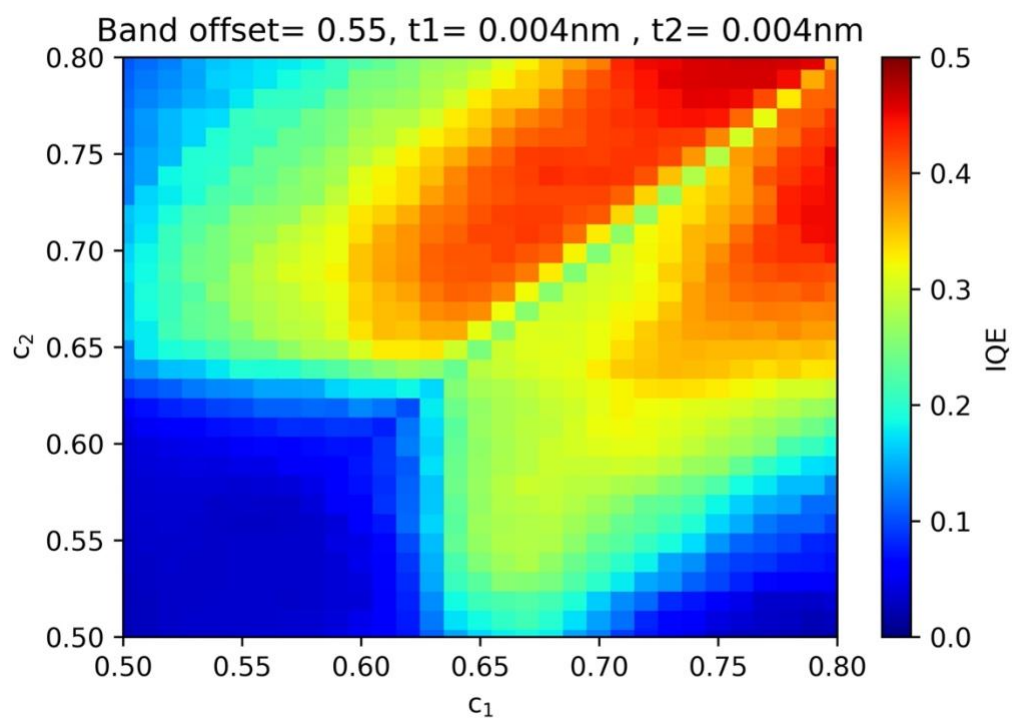


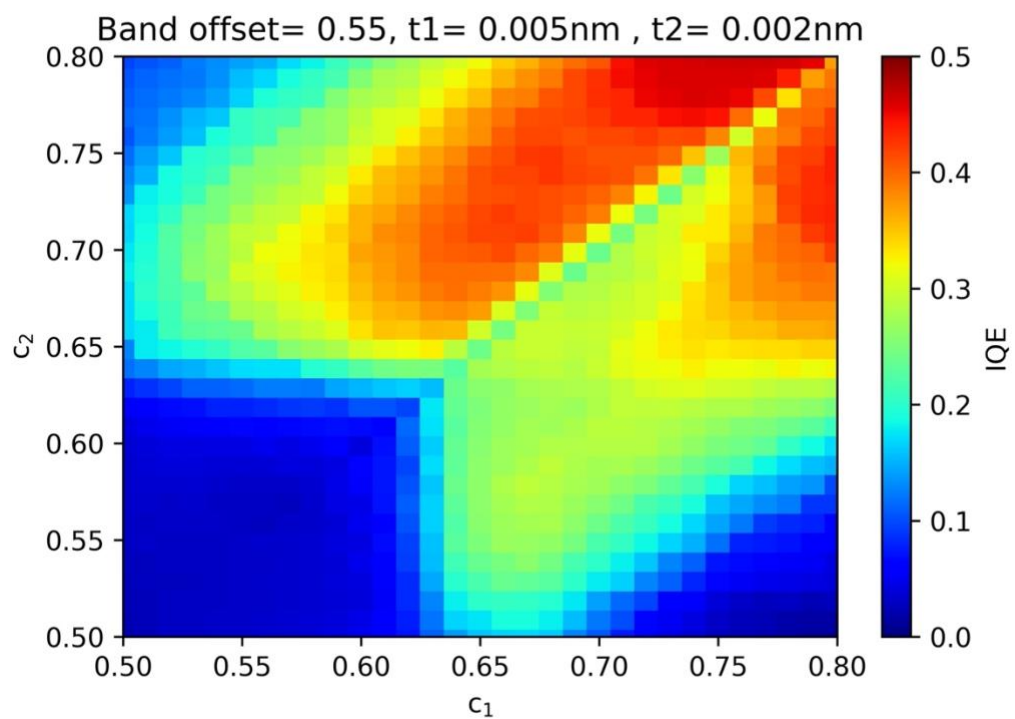
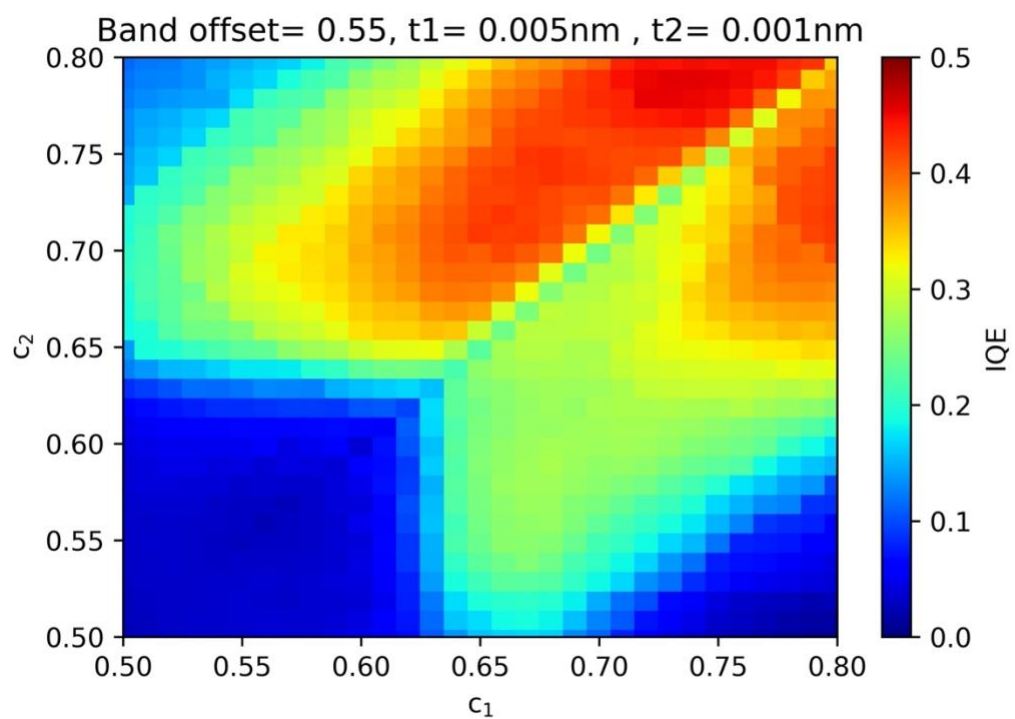


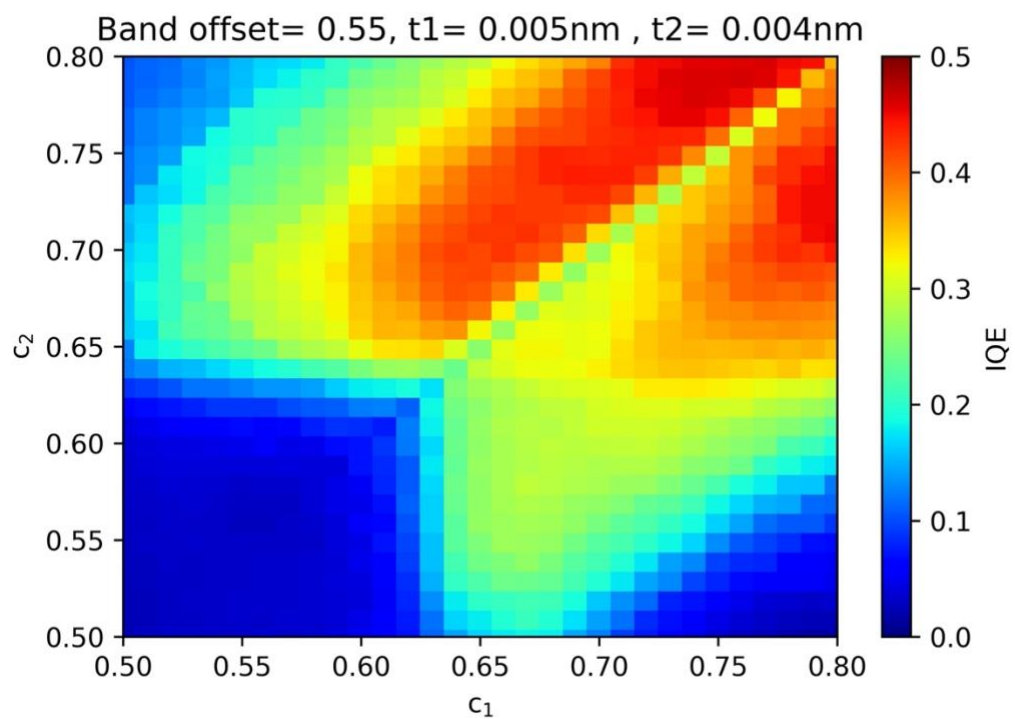
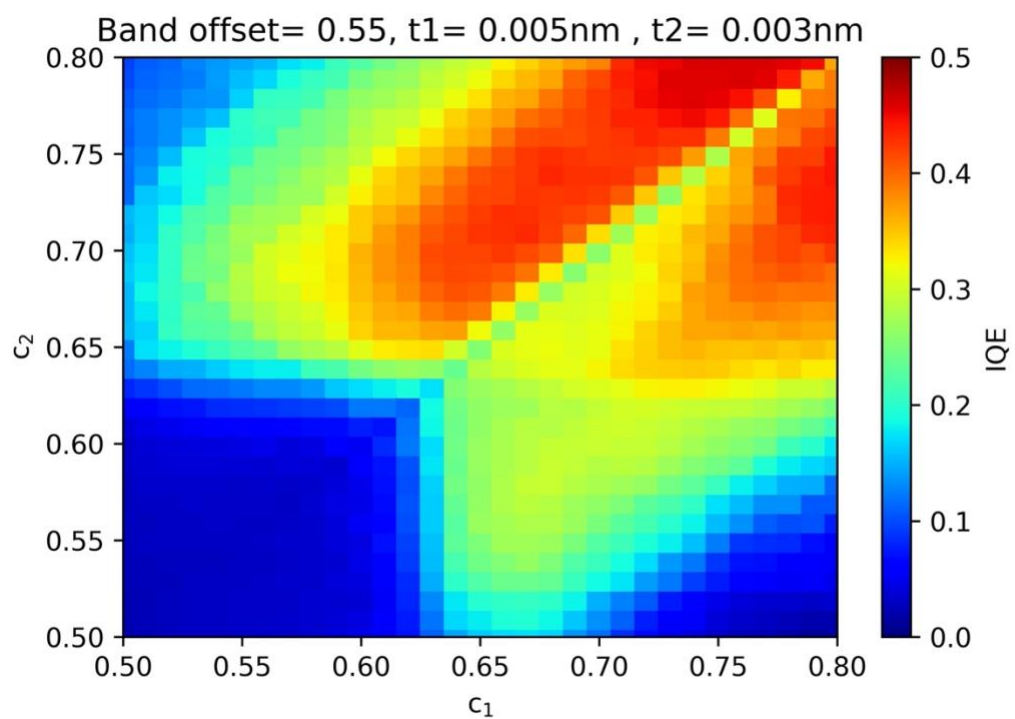


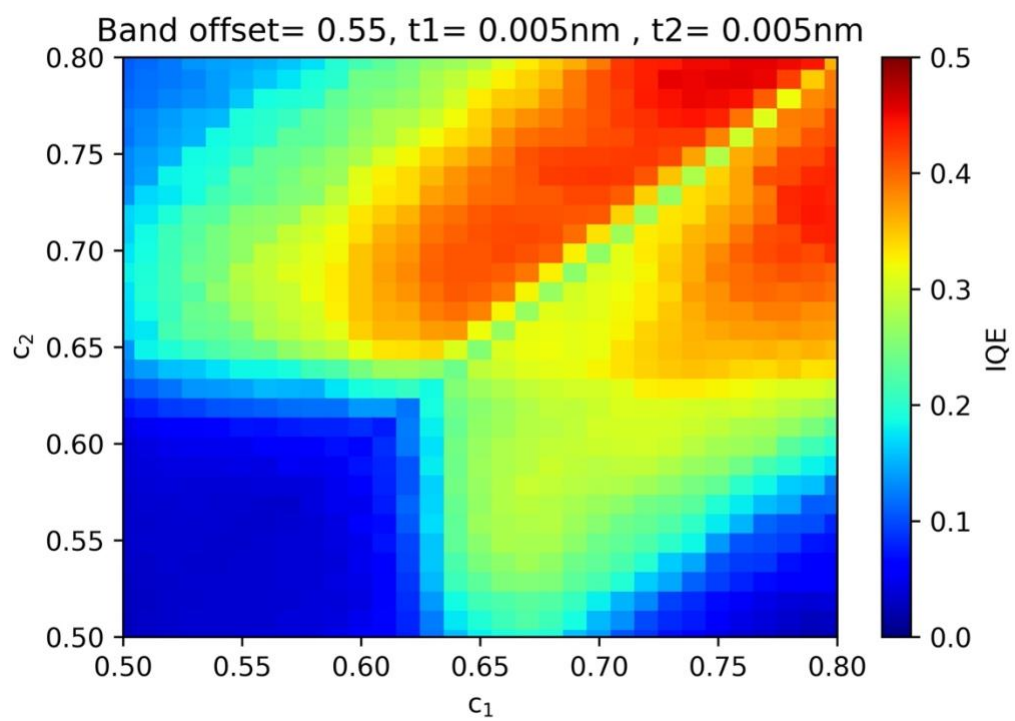




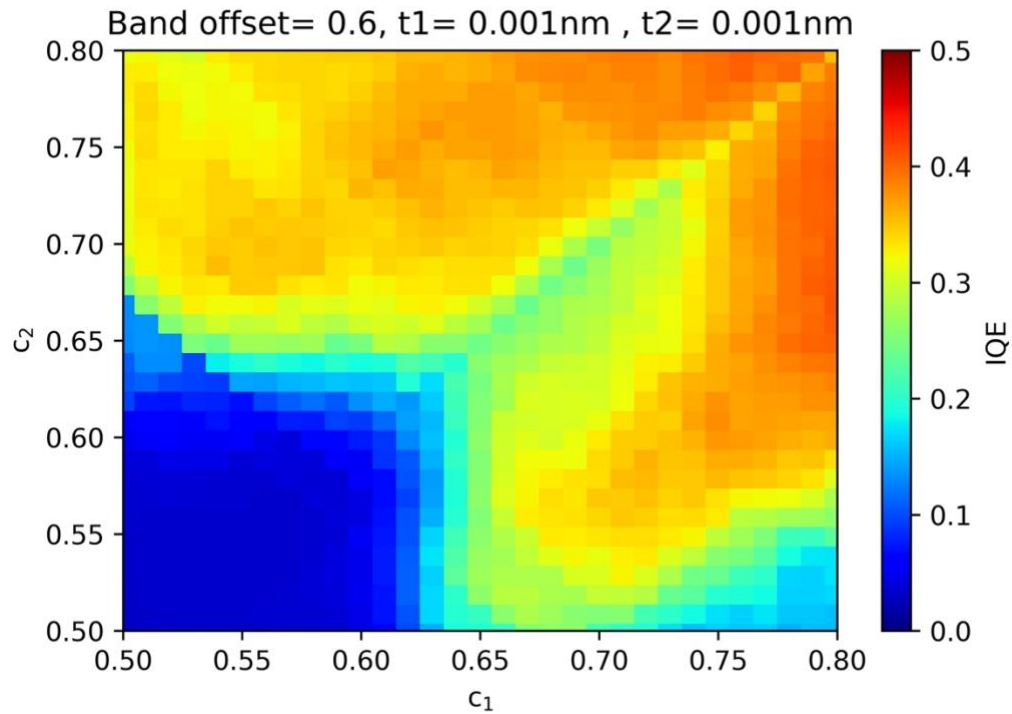
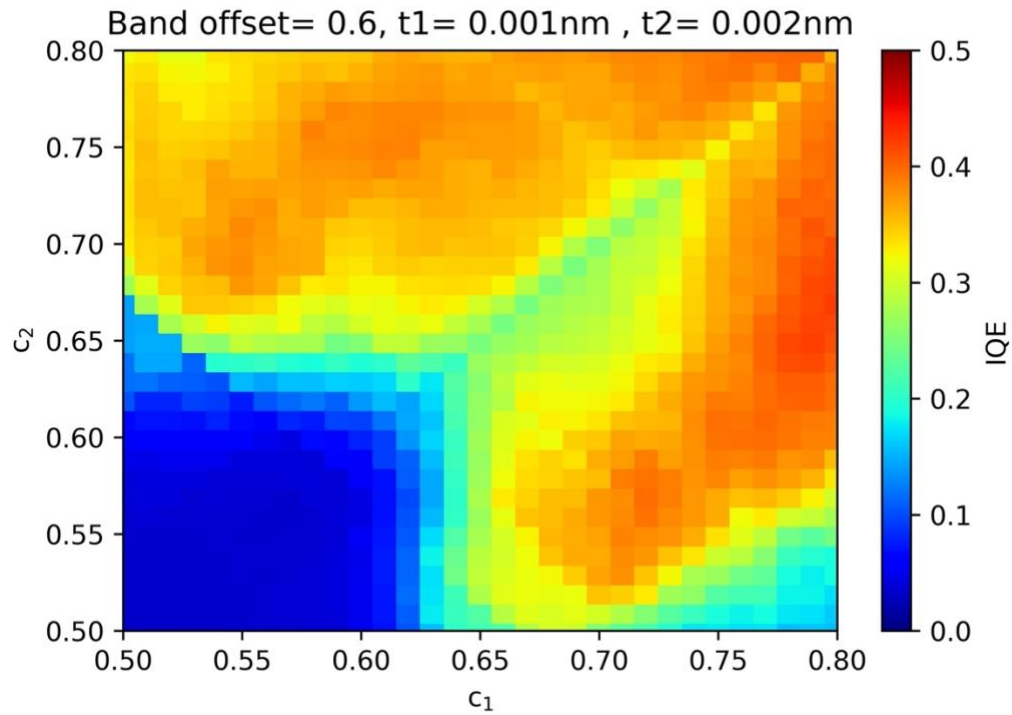


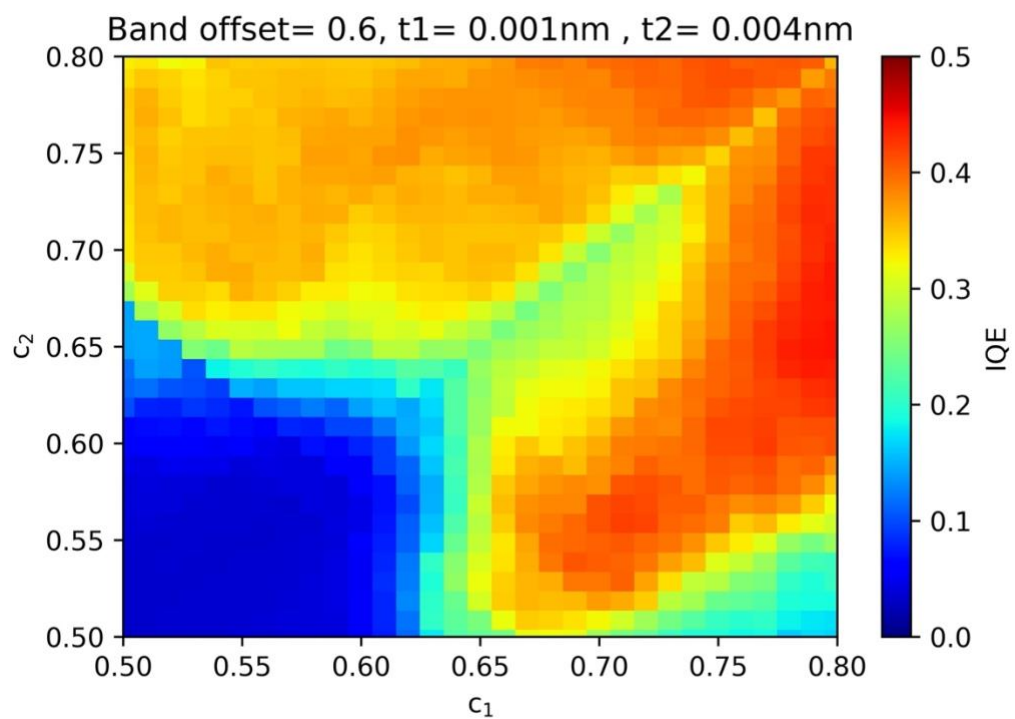
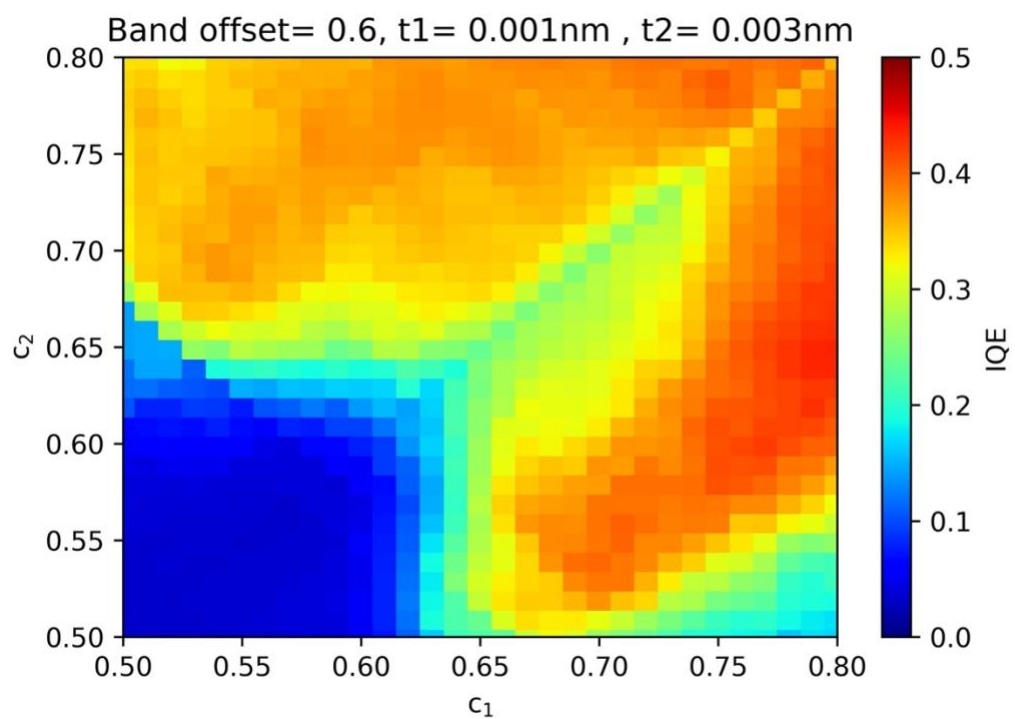


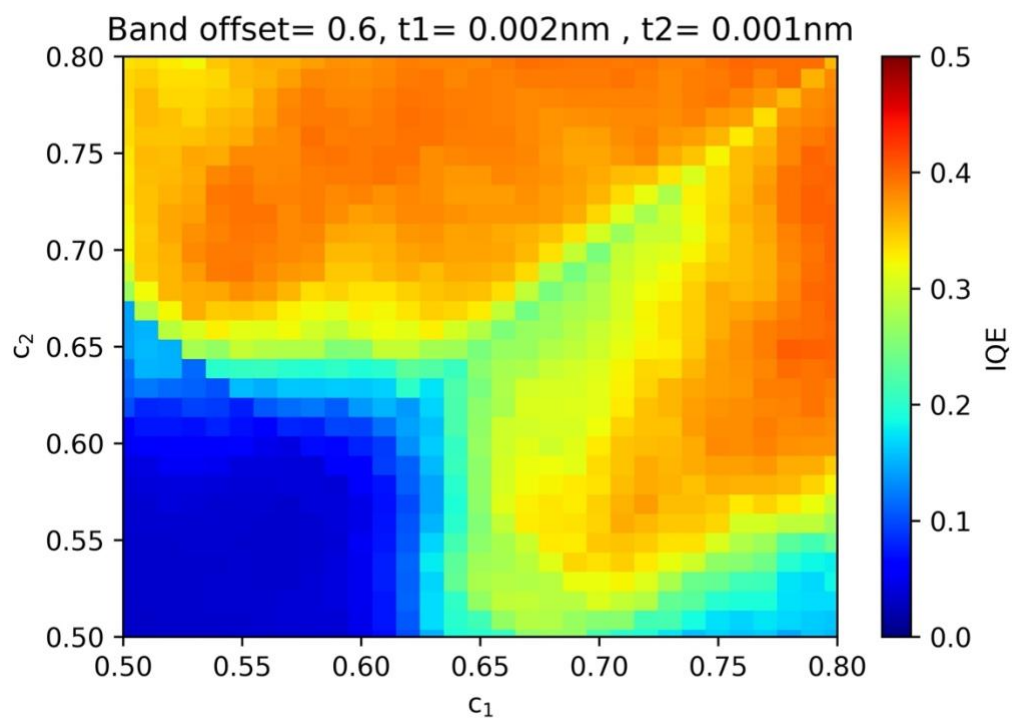
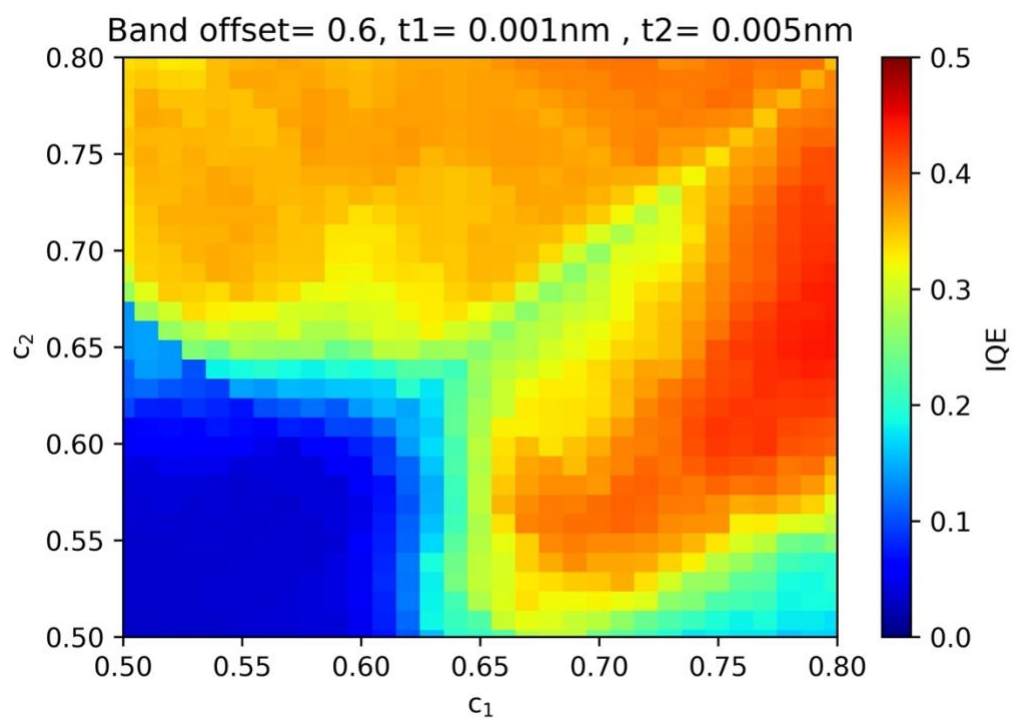


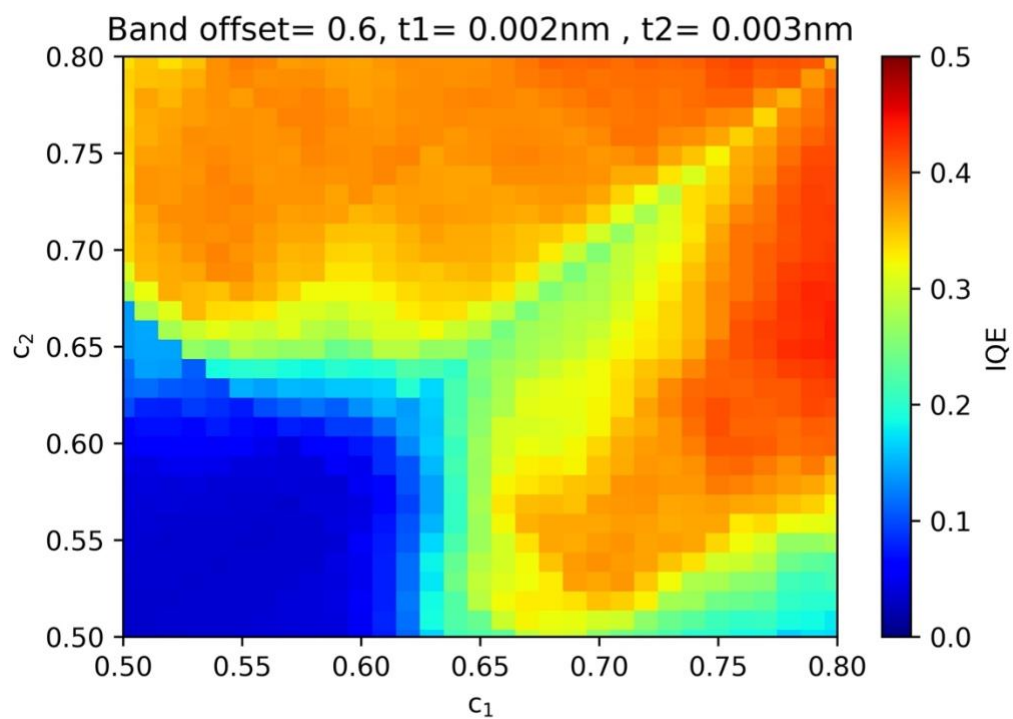
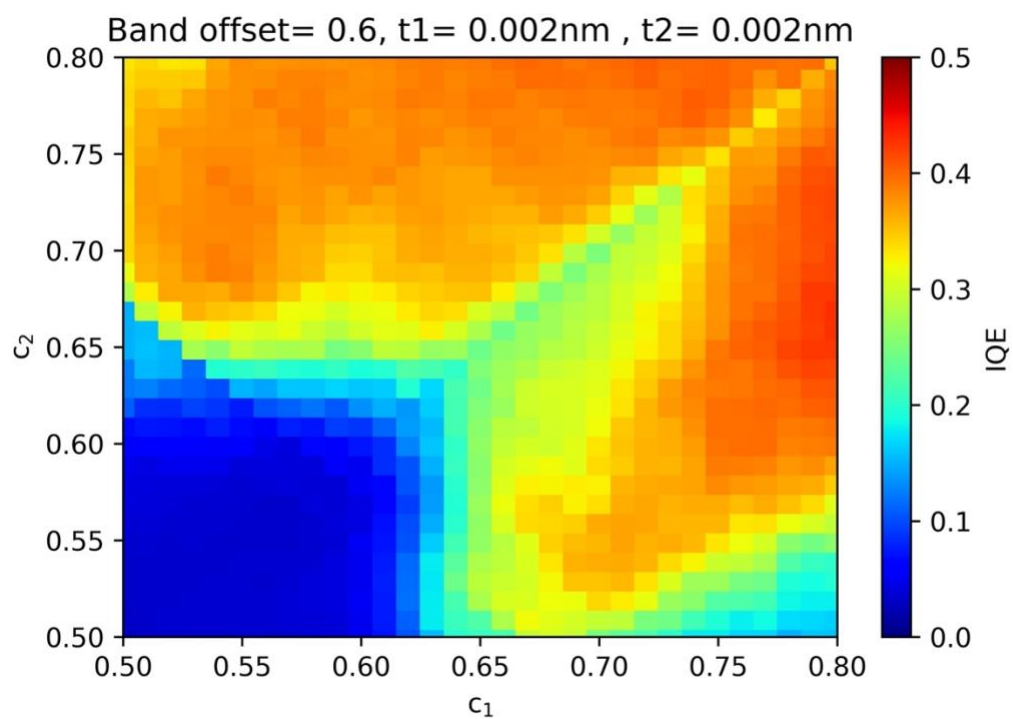


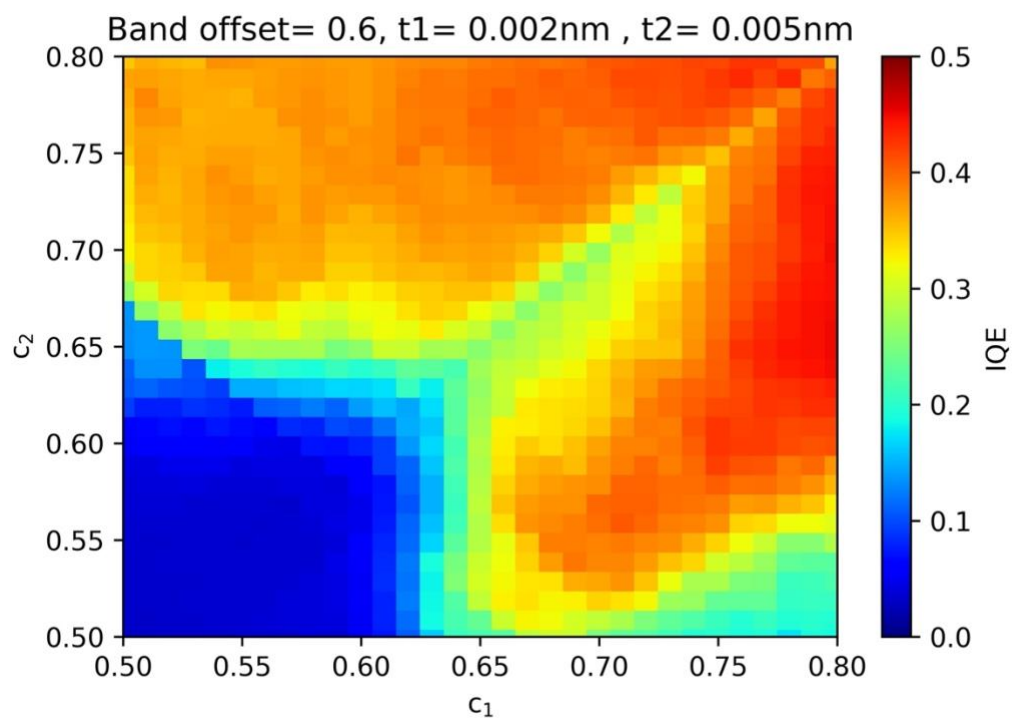
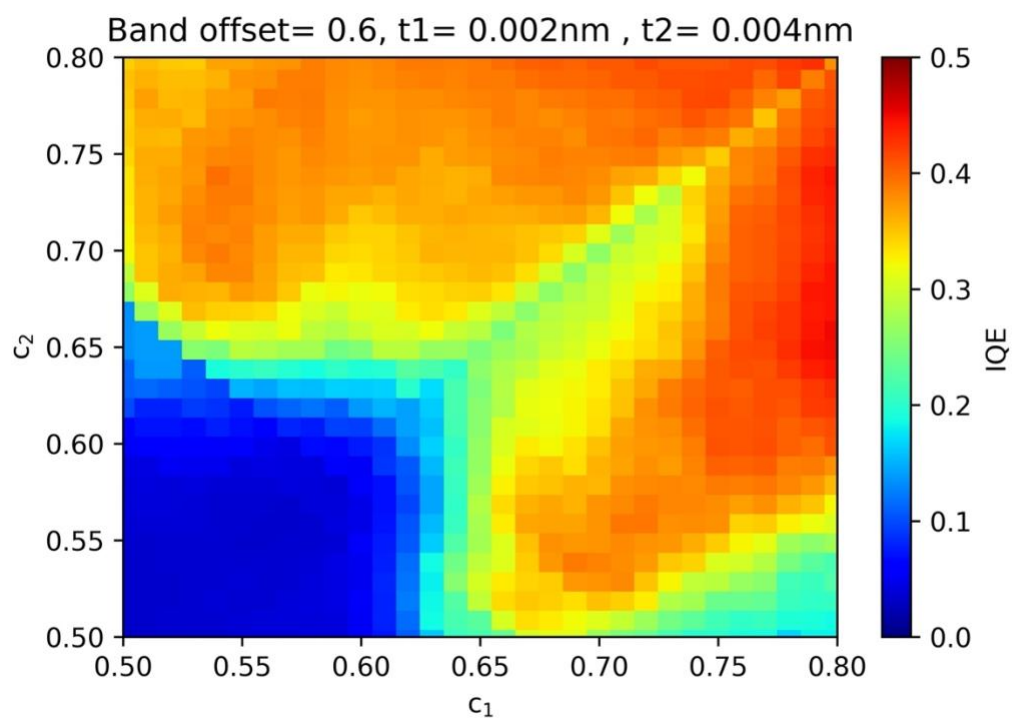
S2. Internal quantum efficiency (IQE) predictions from stacked XGBoost/LightGBM model of superlattice (SL) electron blocking layer (EBL) with different composition combinations under the band offset ratio = 0.6.

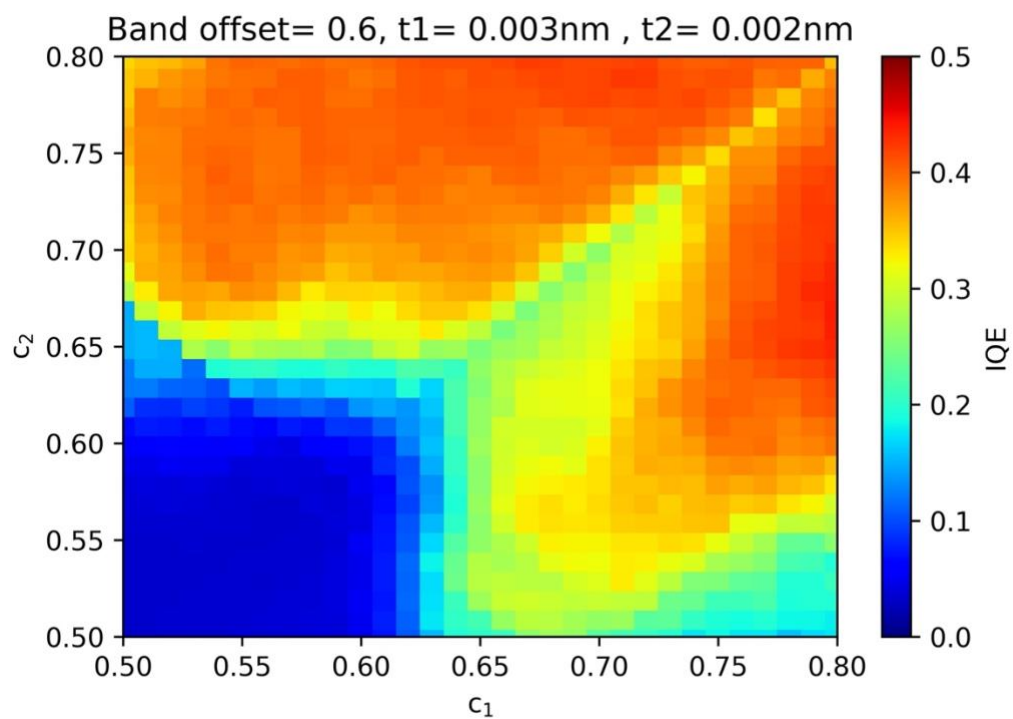
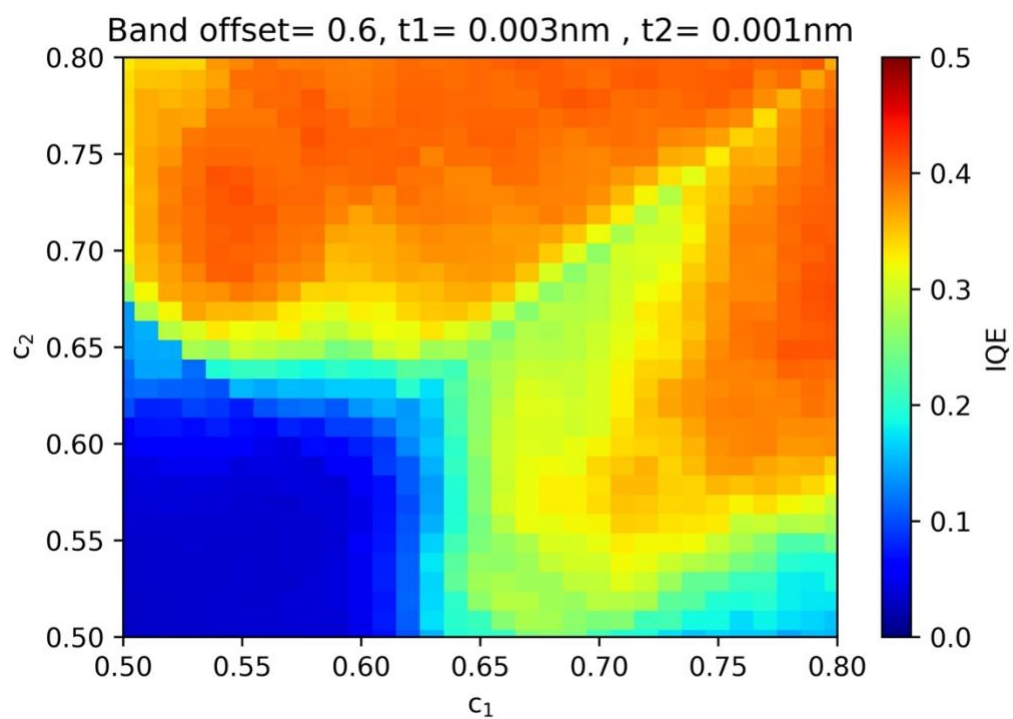


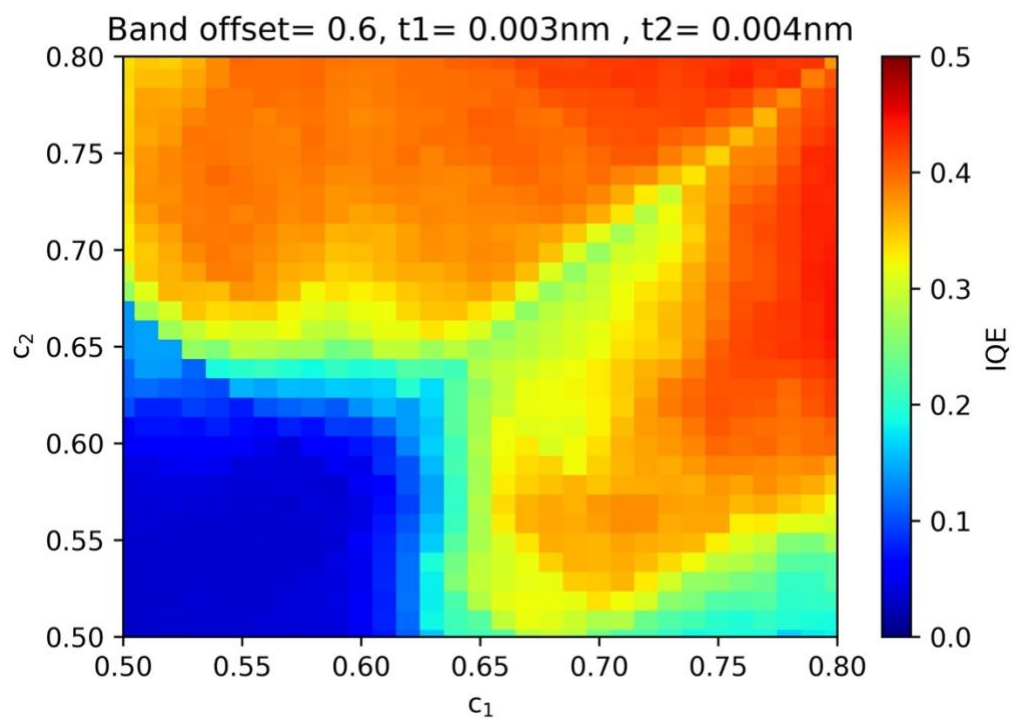
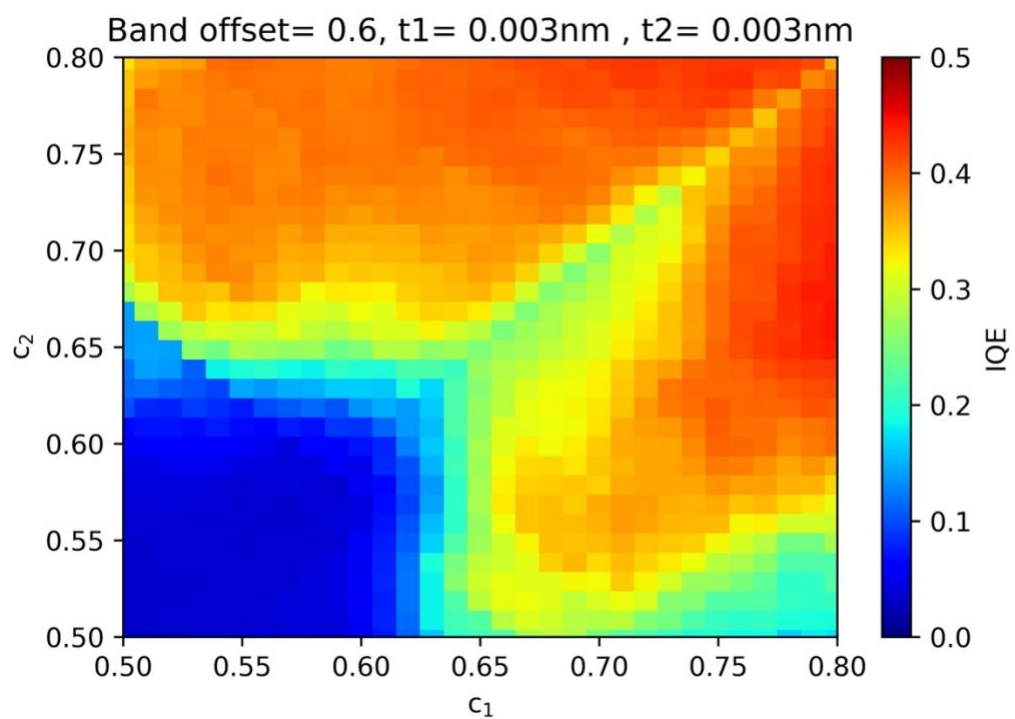


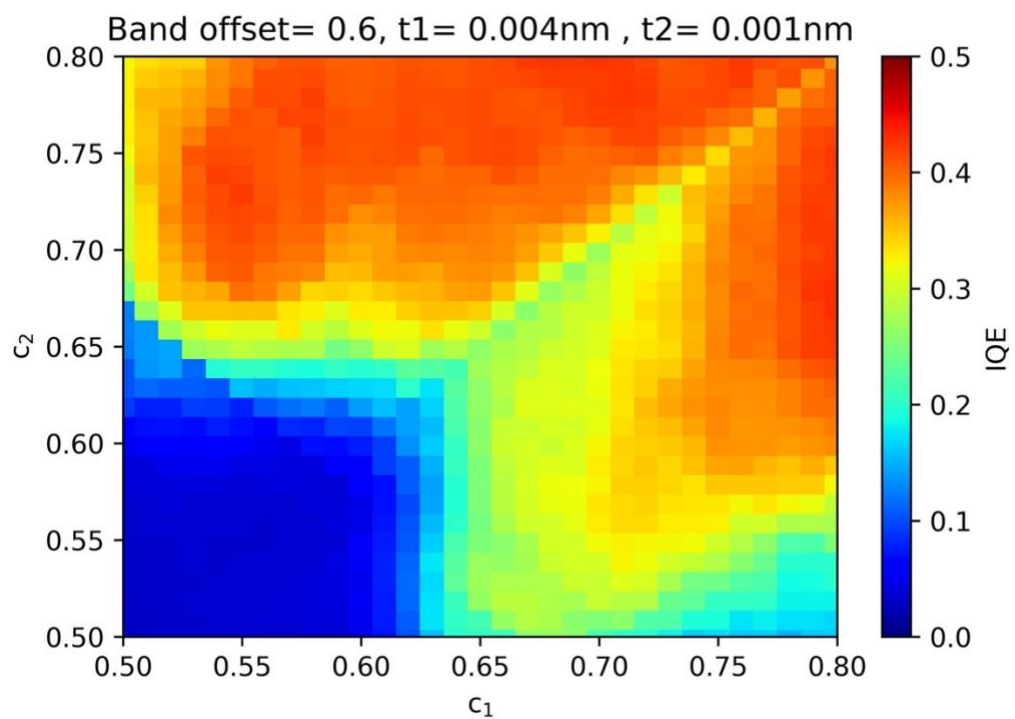
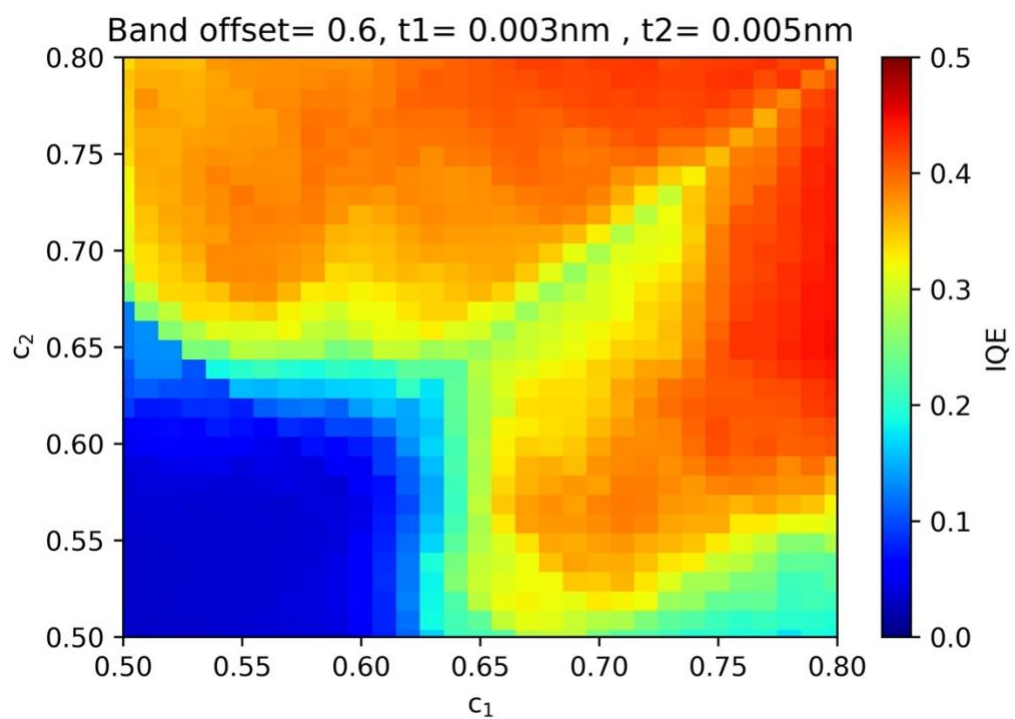


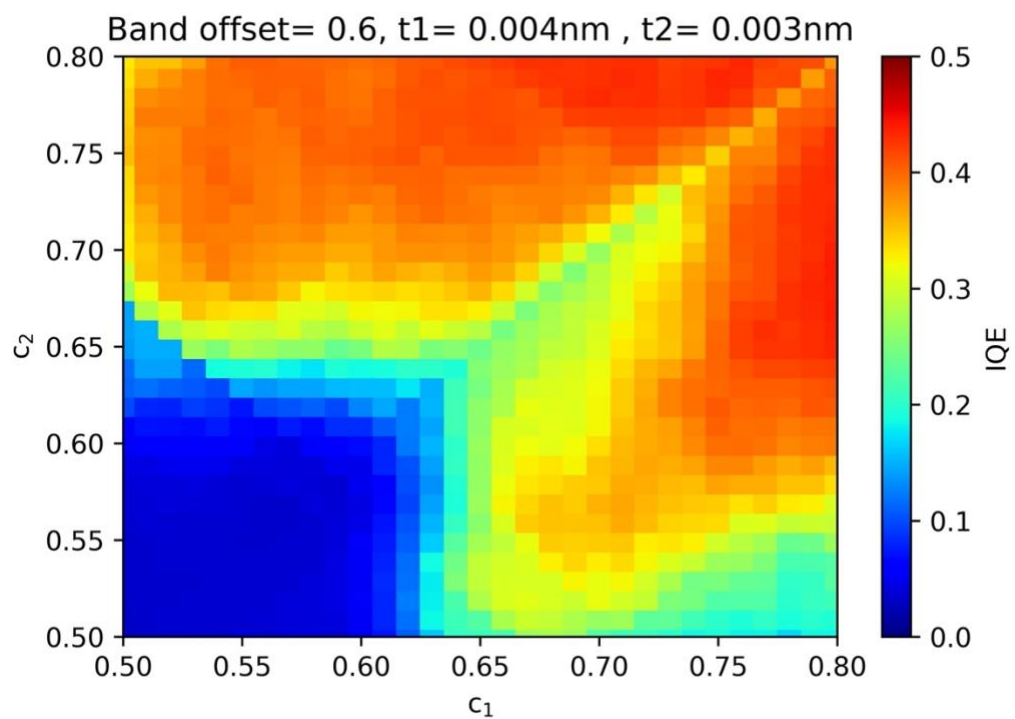
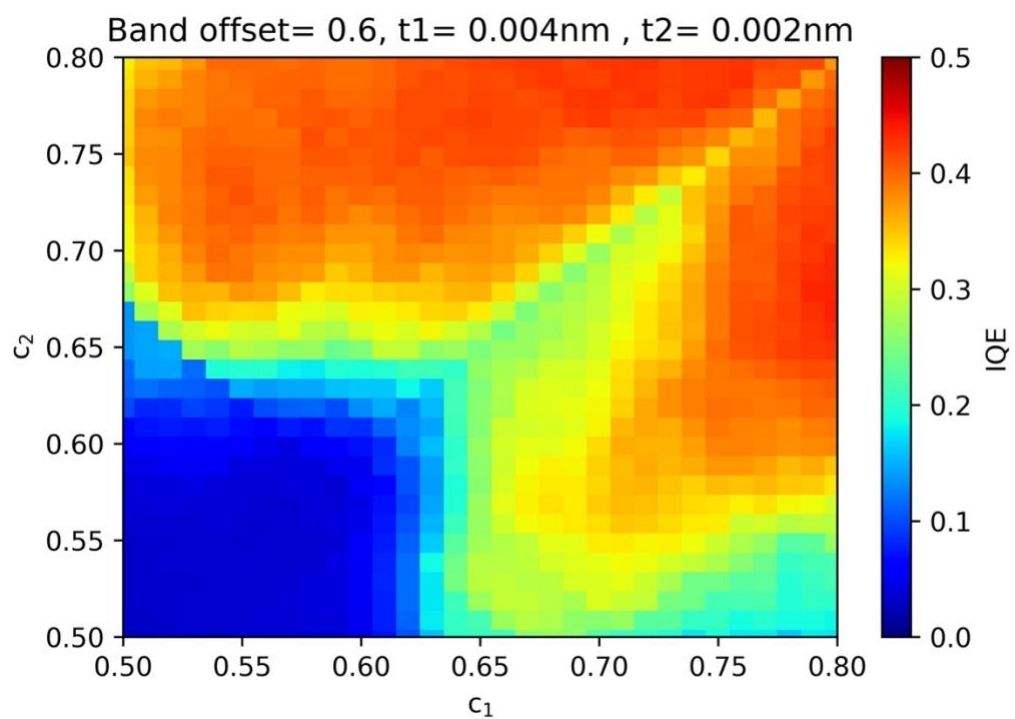


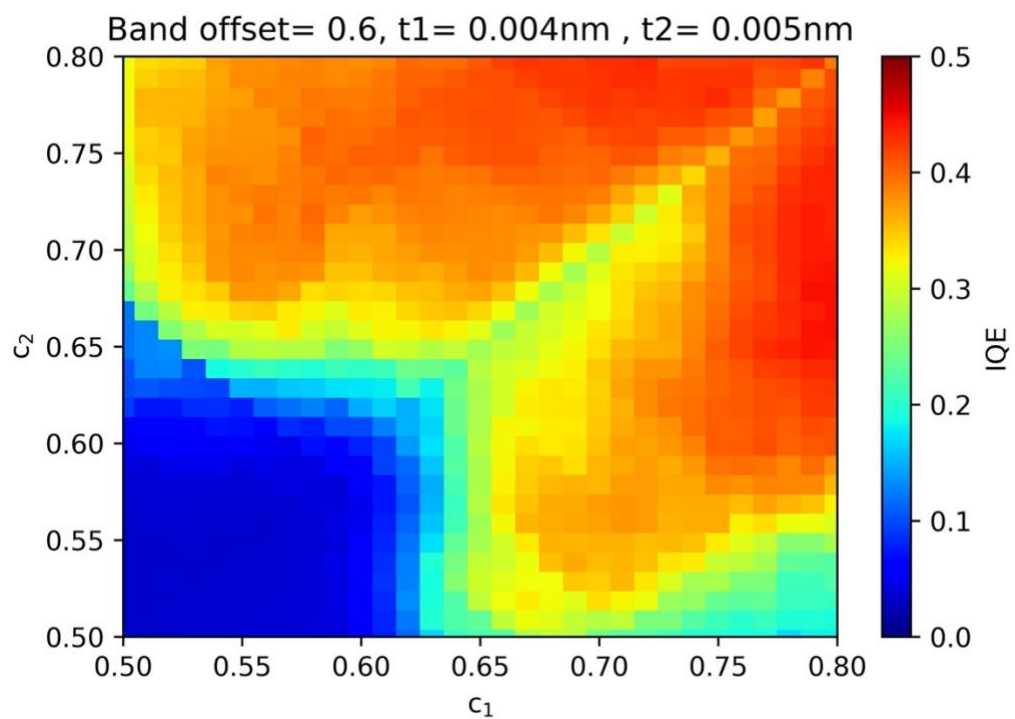
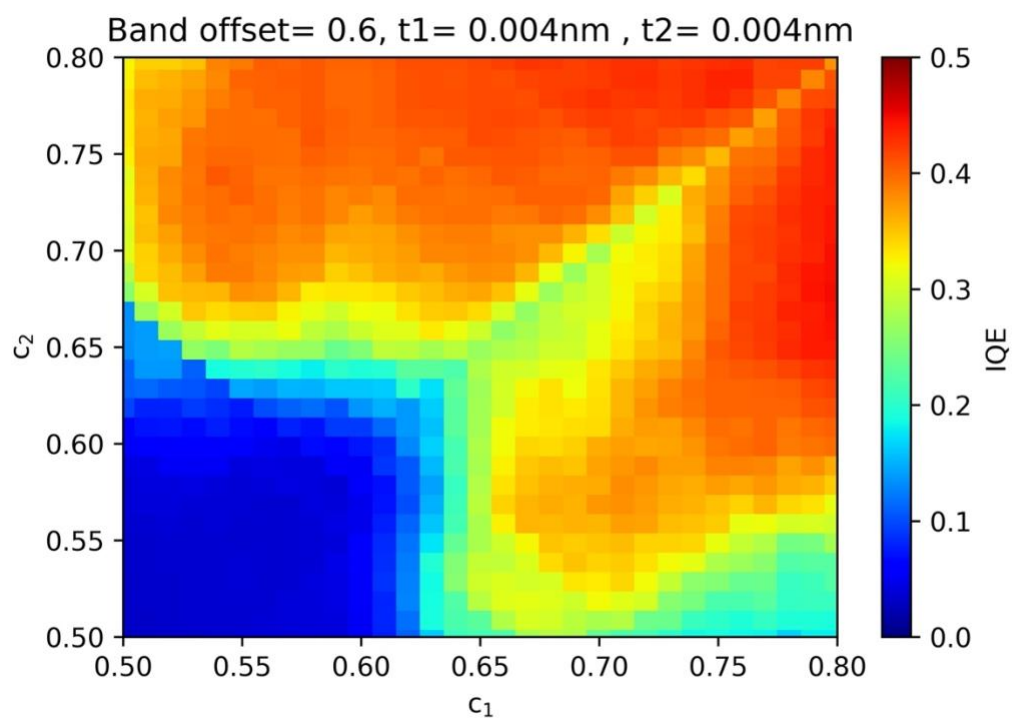


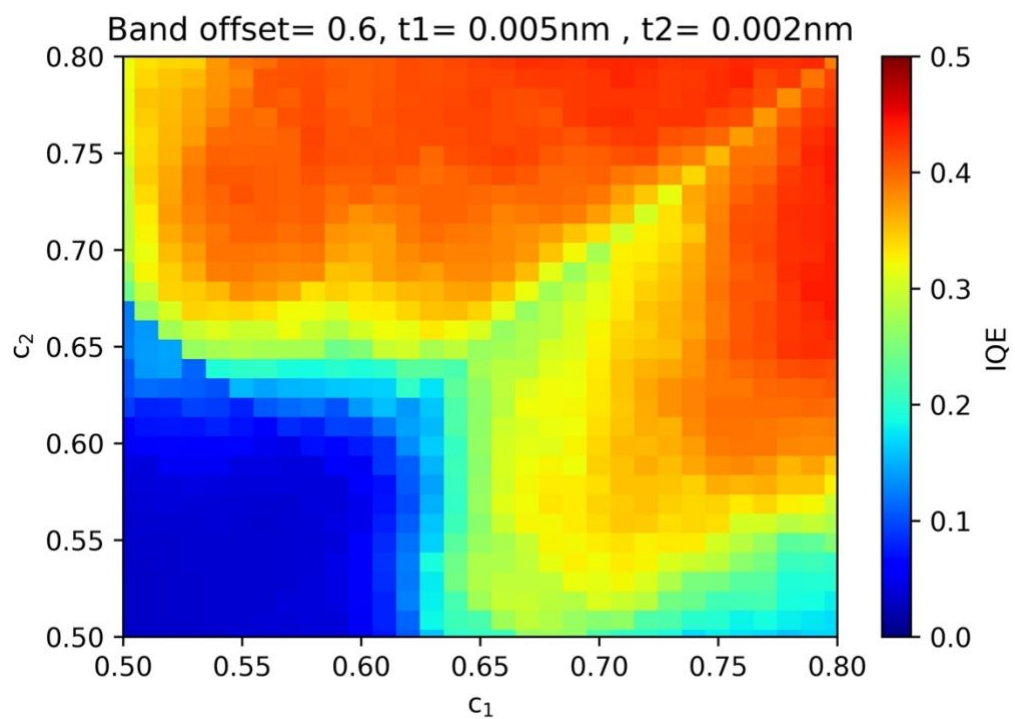
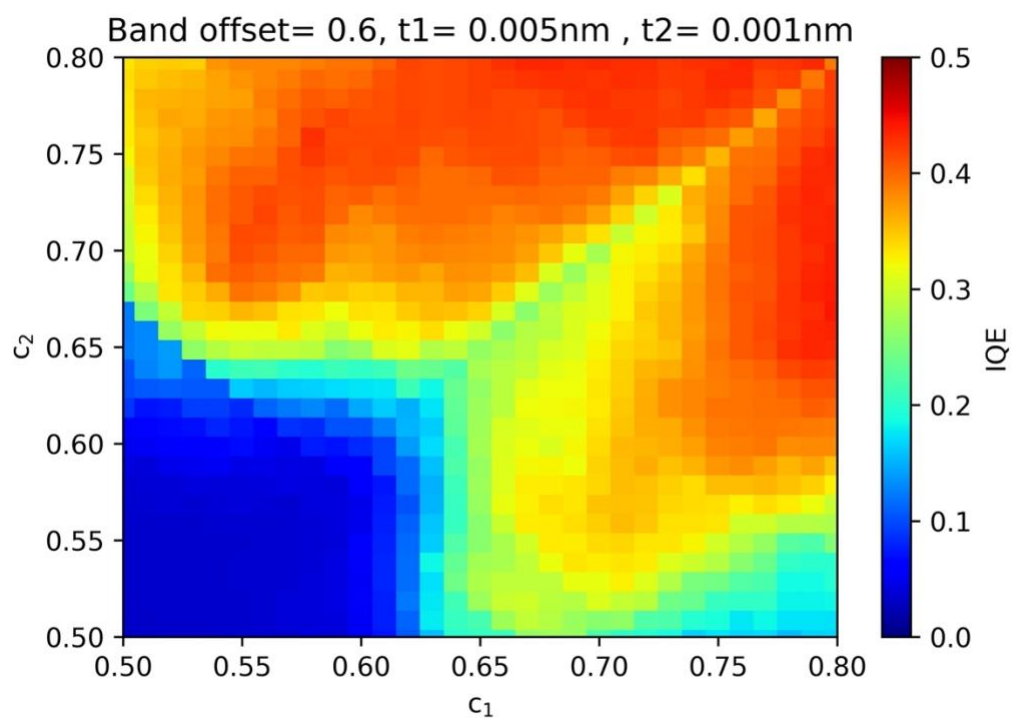


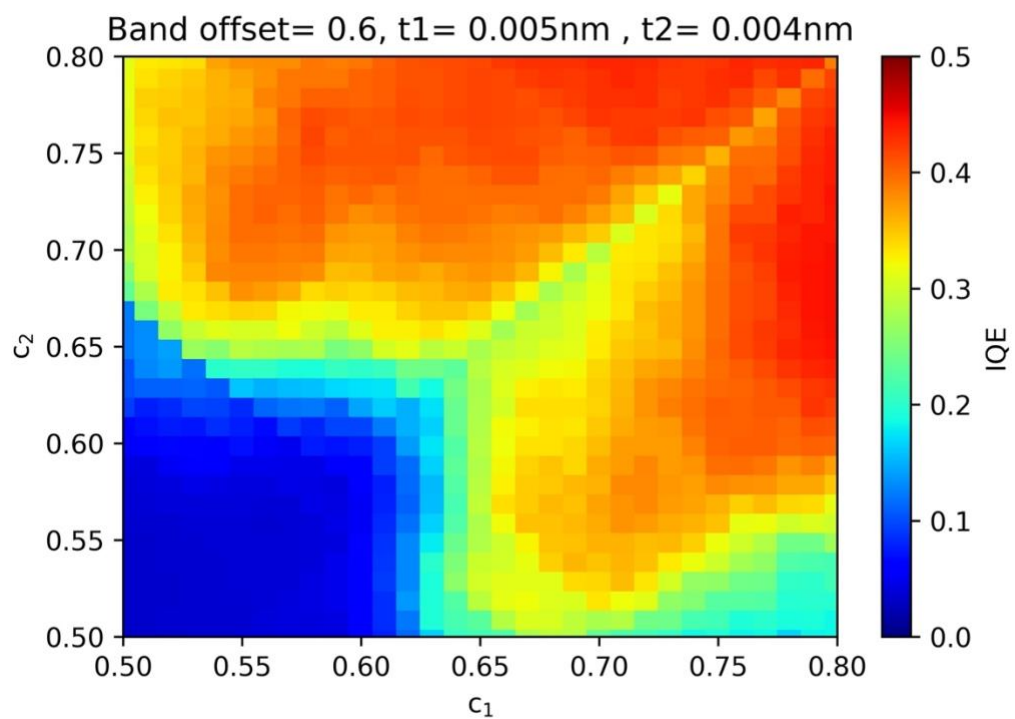
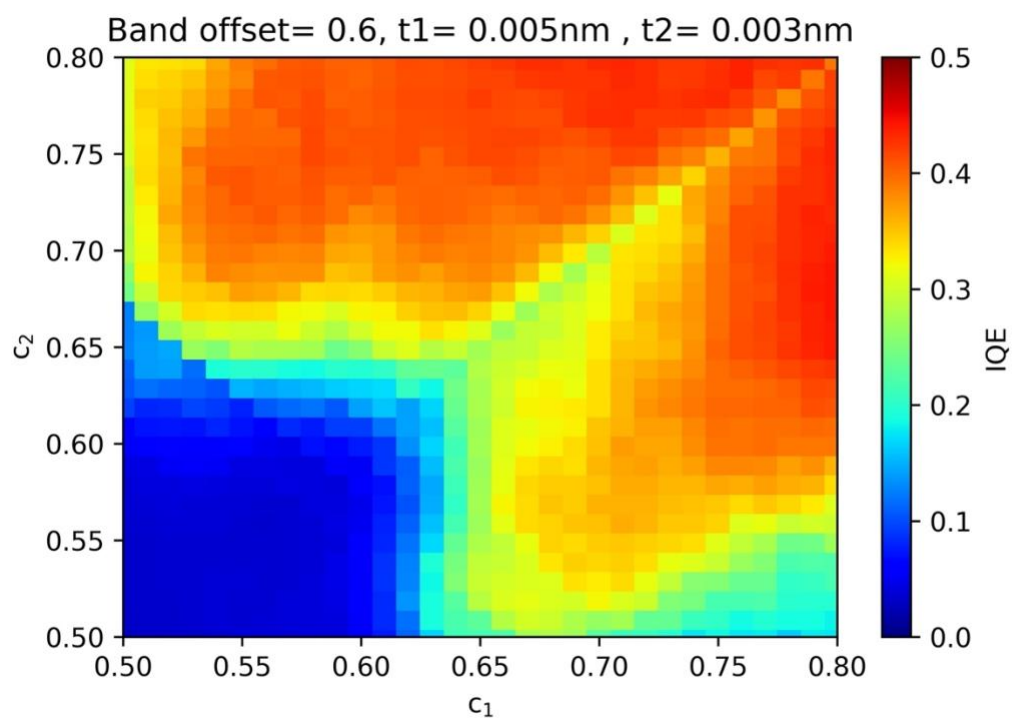


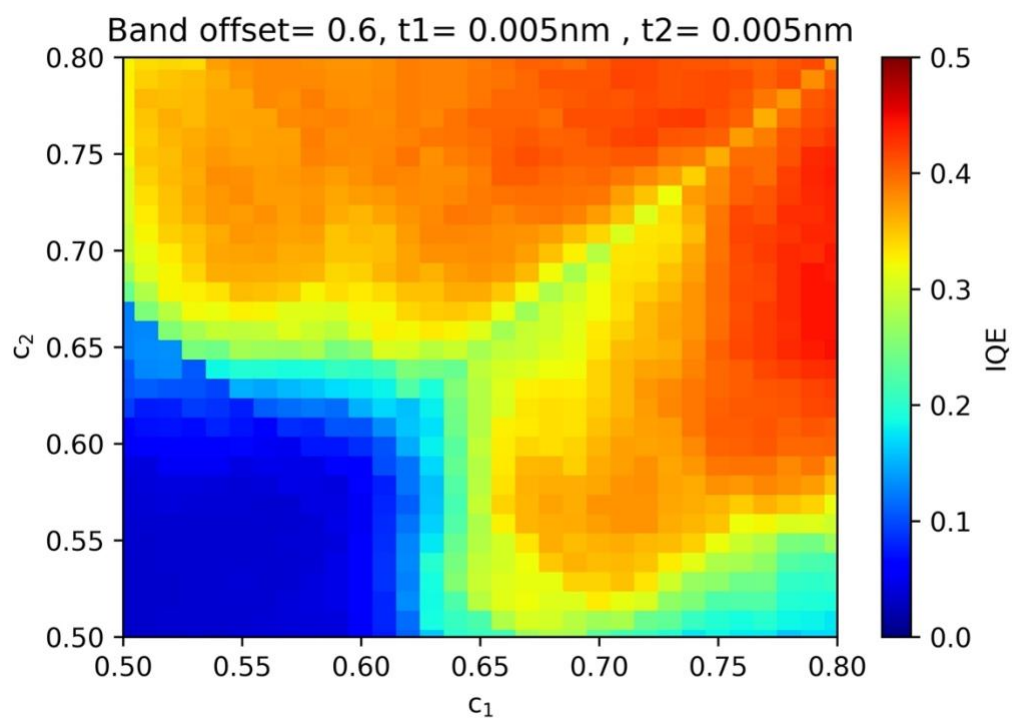




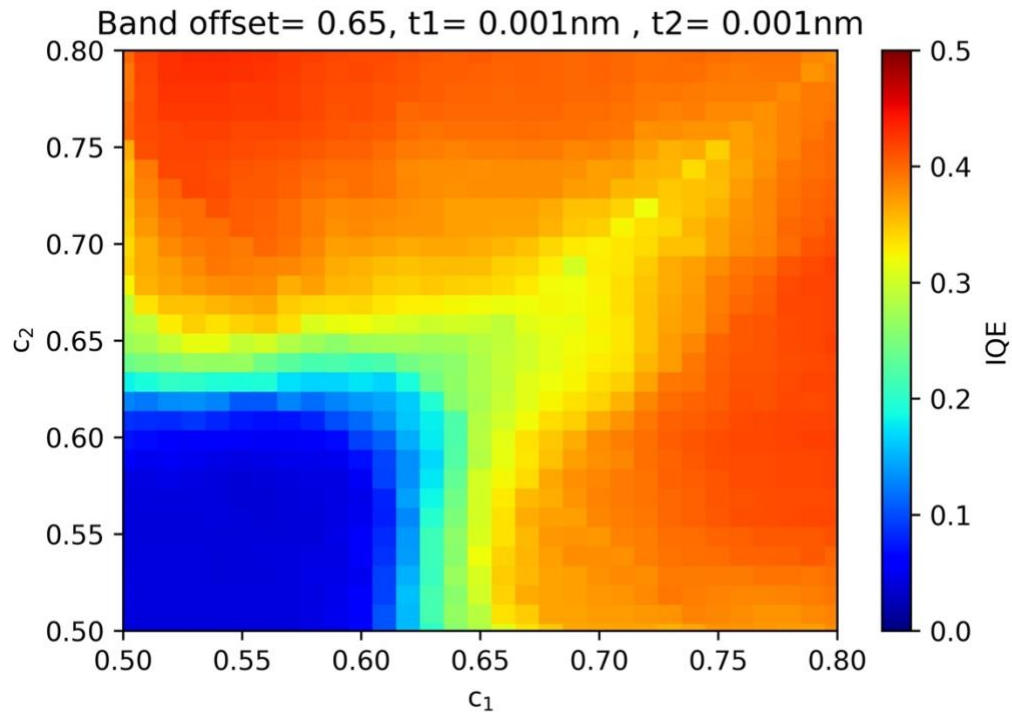
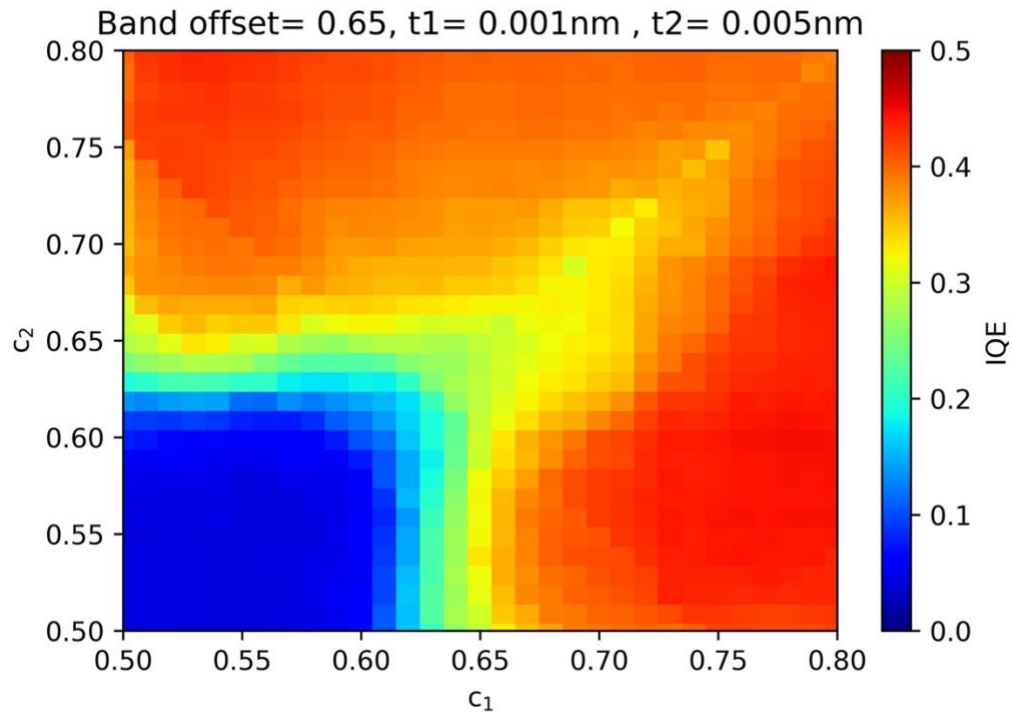


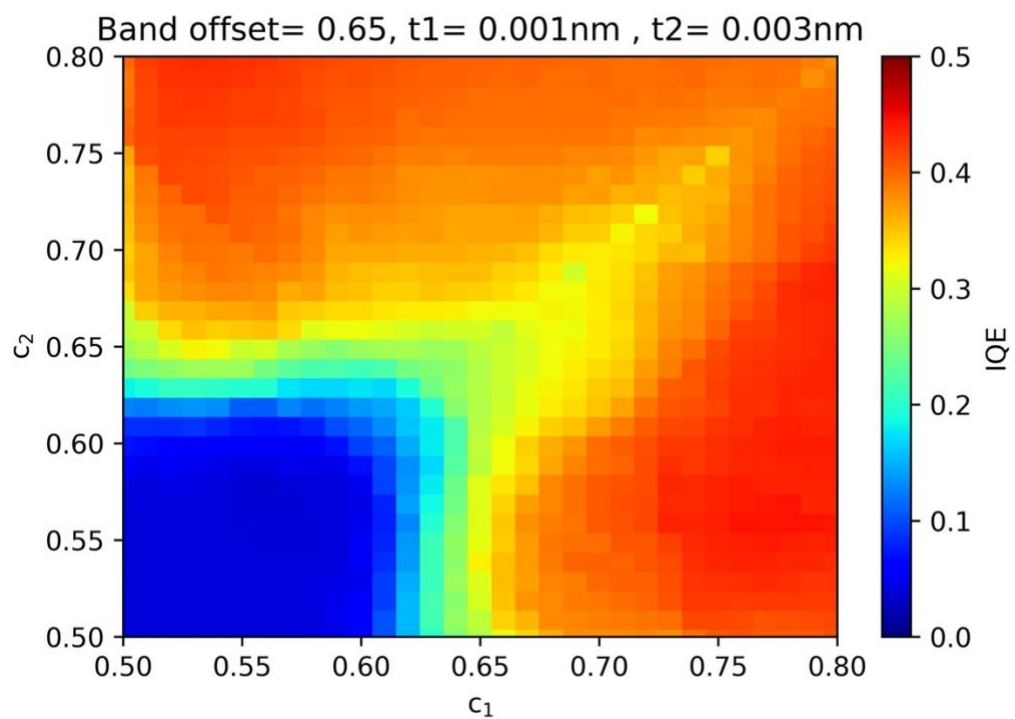
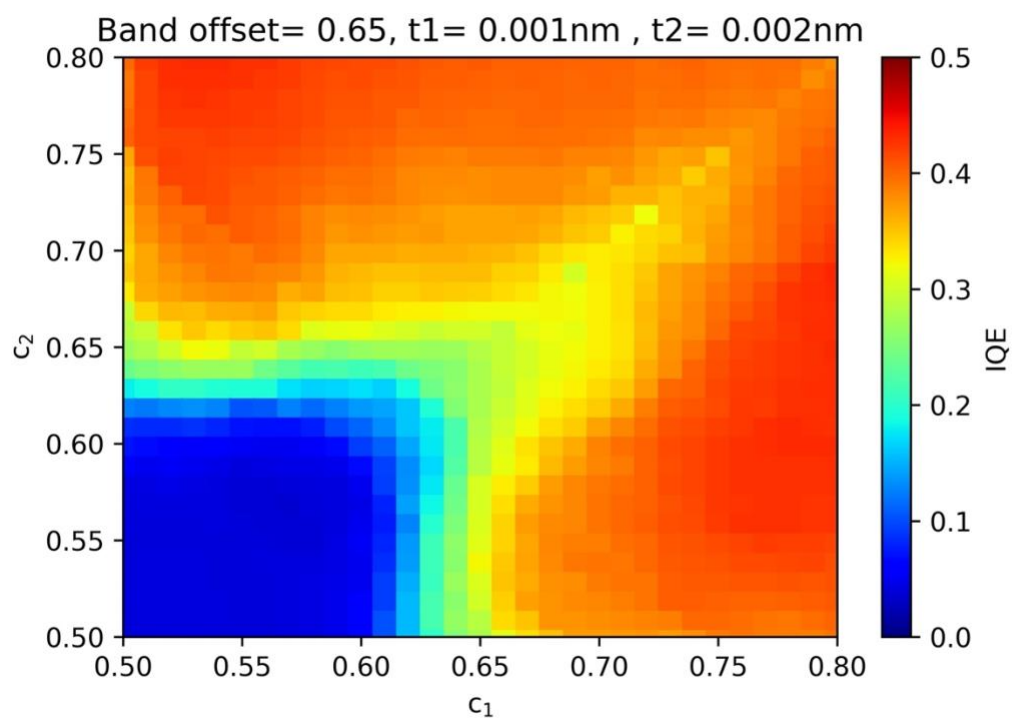


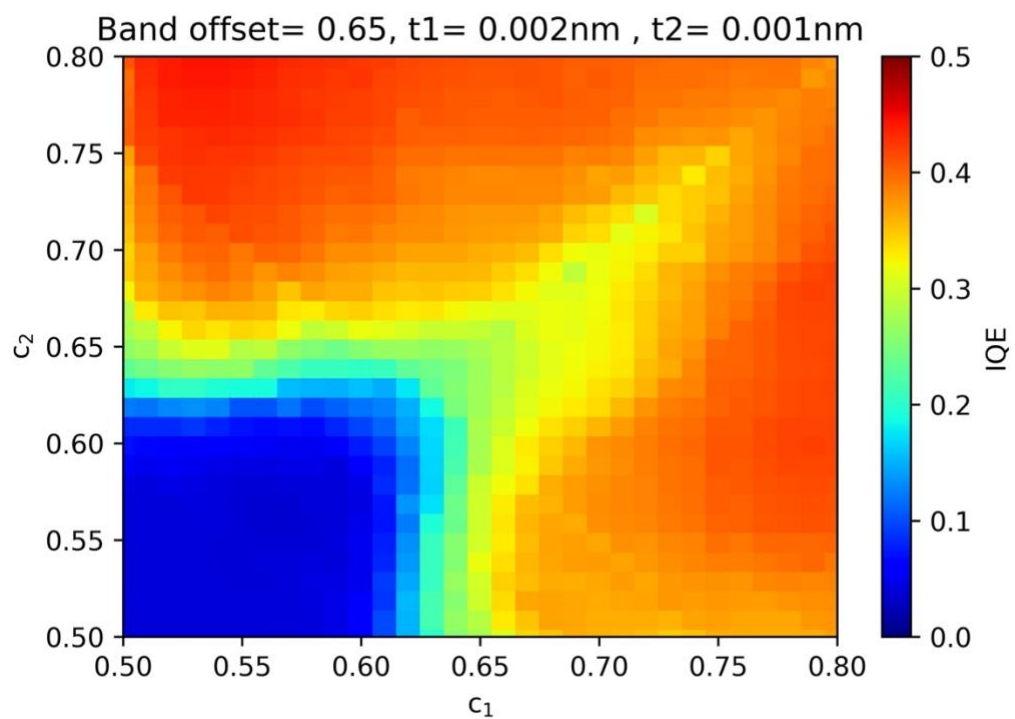
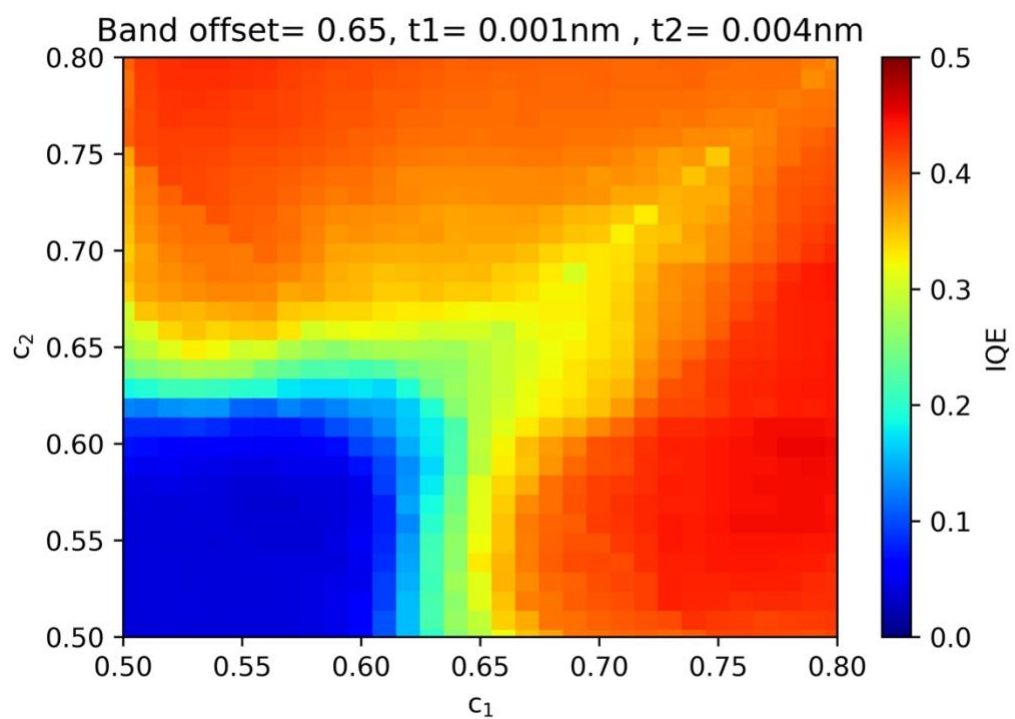


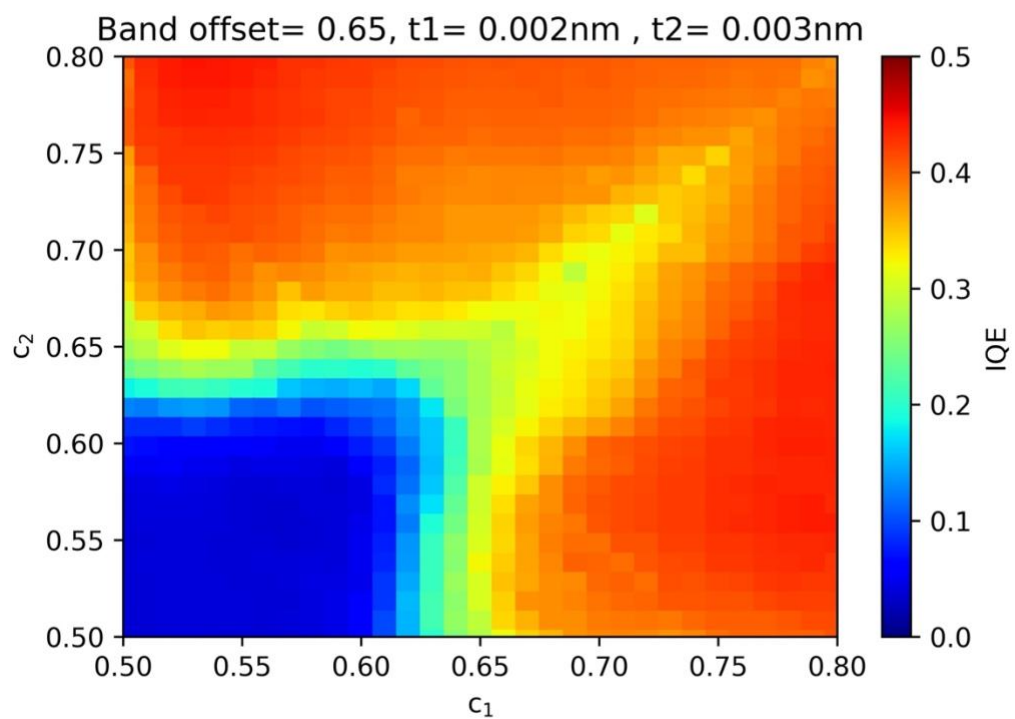
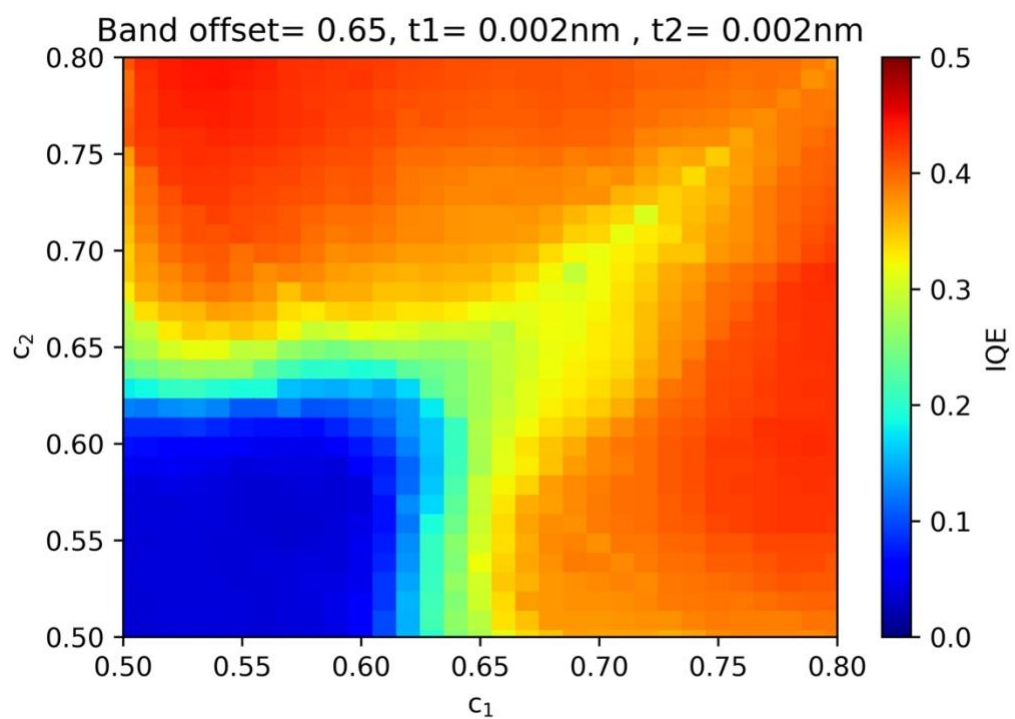


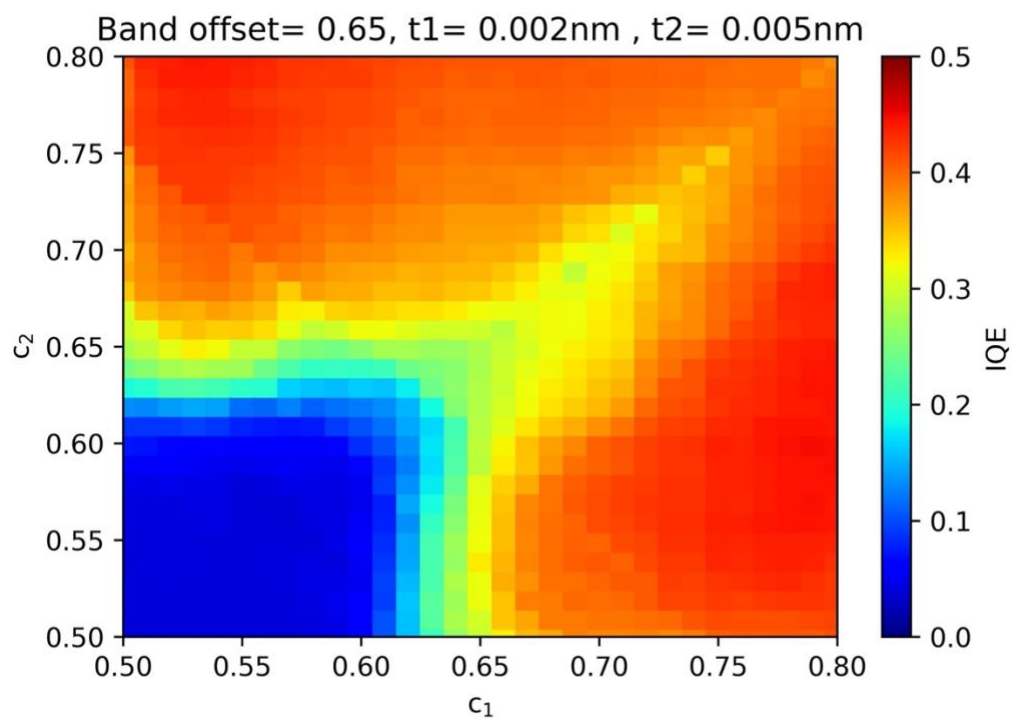
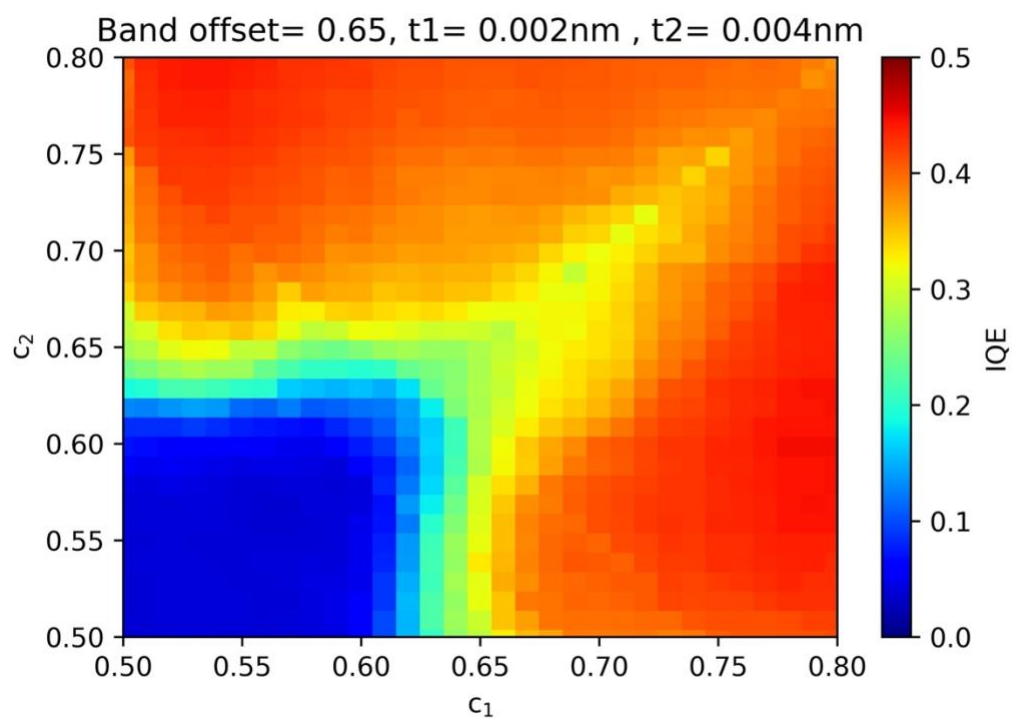
S3. Internal quantum efficiency (IQE) predictions from stacked XGBoost/LightGBM model of superlattice (SL) electron blocking layer (EBL) with different composition combinations under the band offset ratio = 0.65.

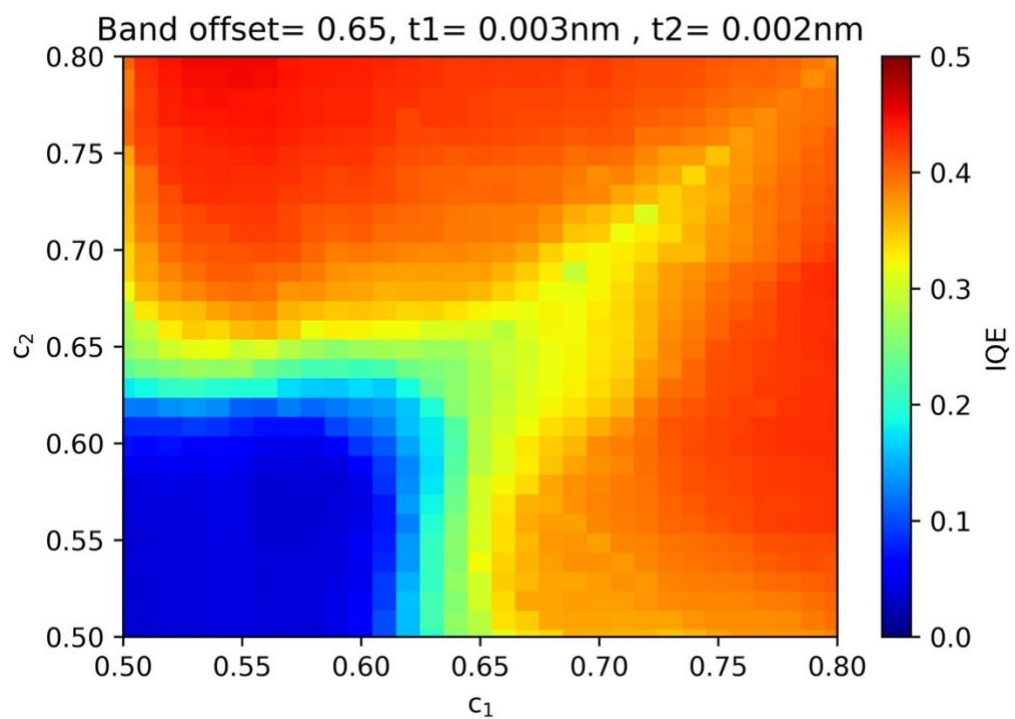
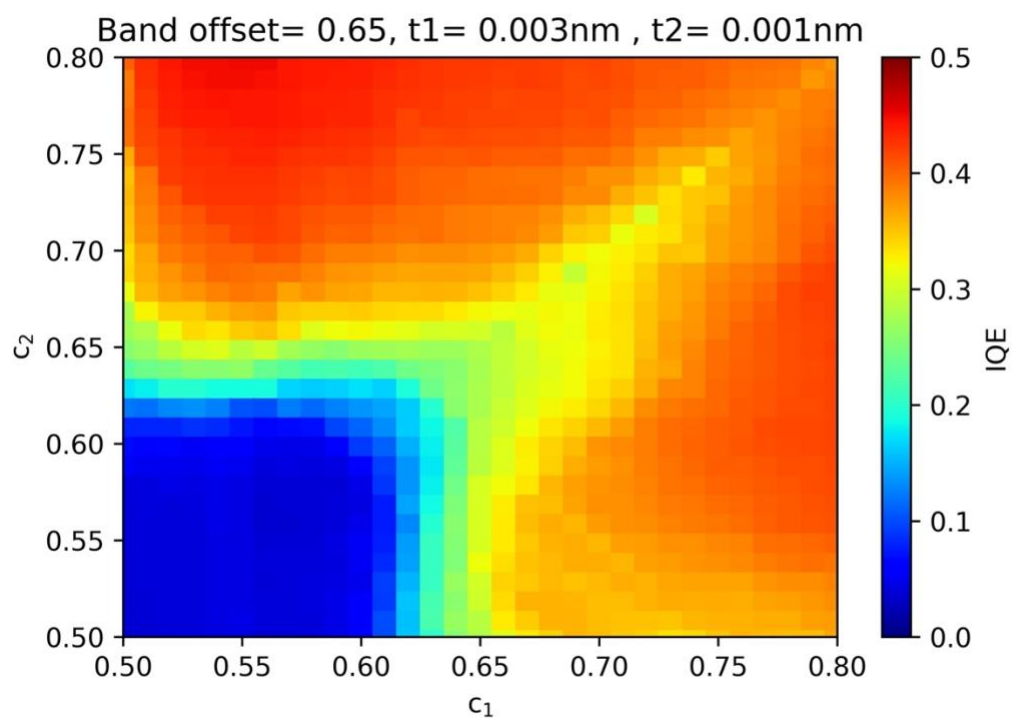


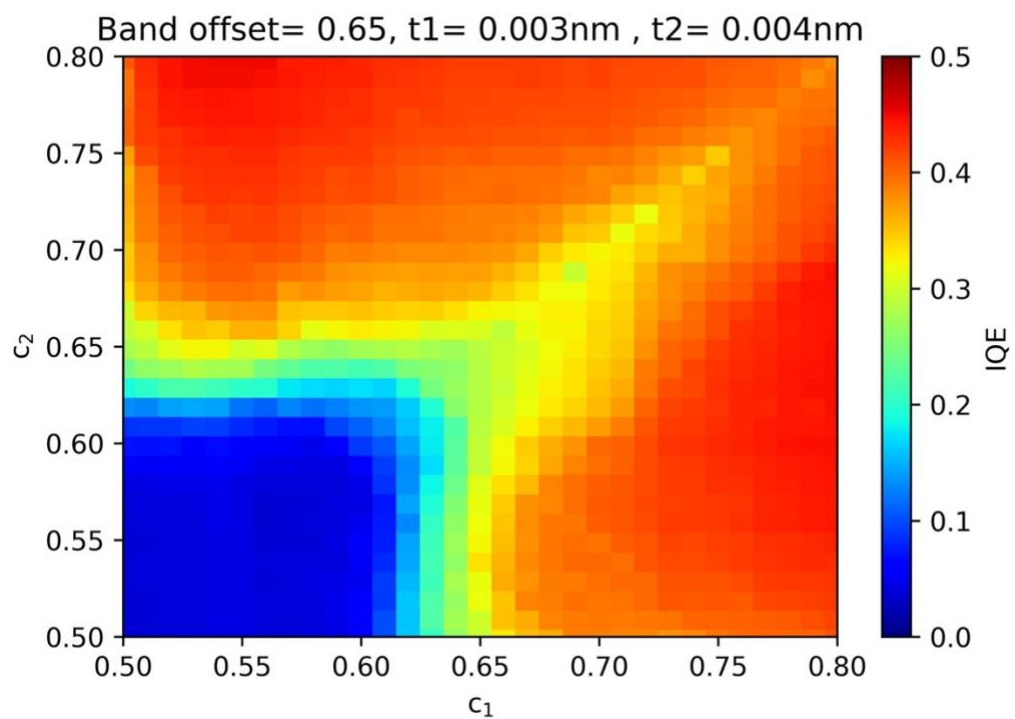
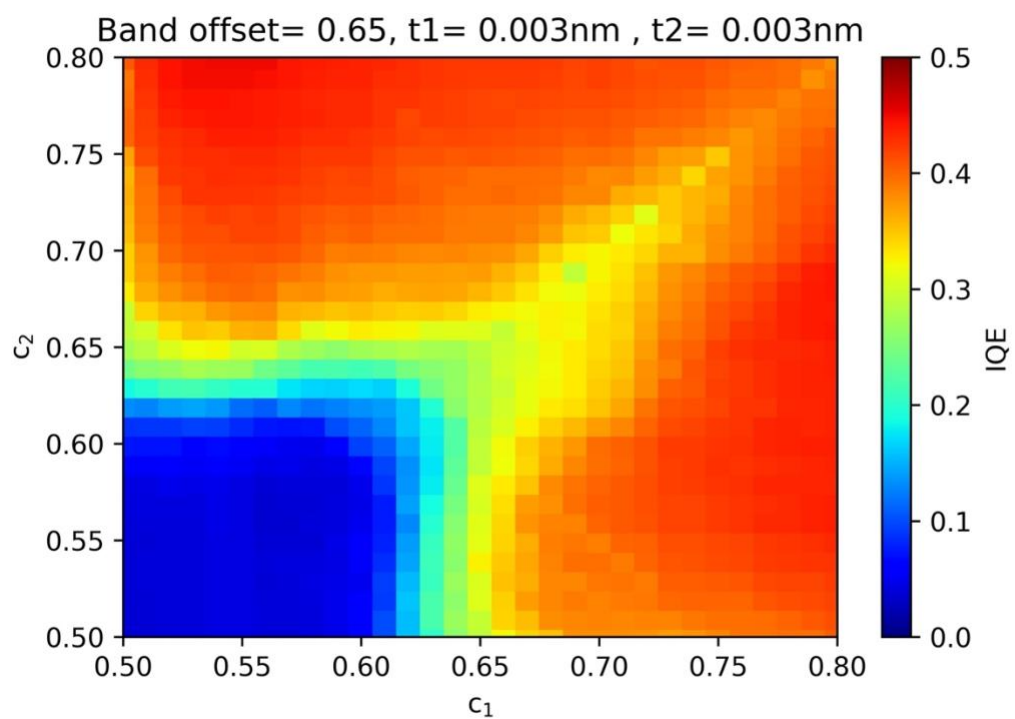


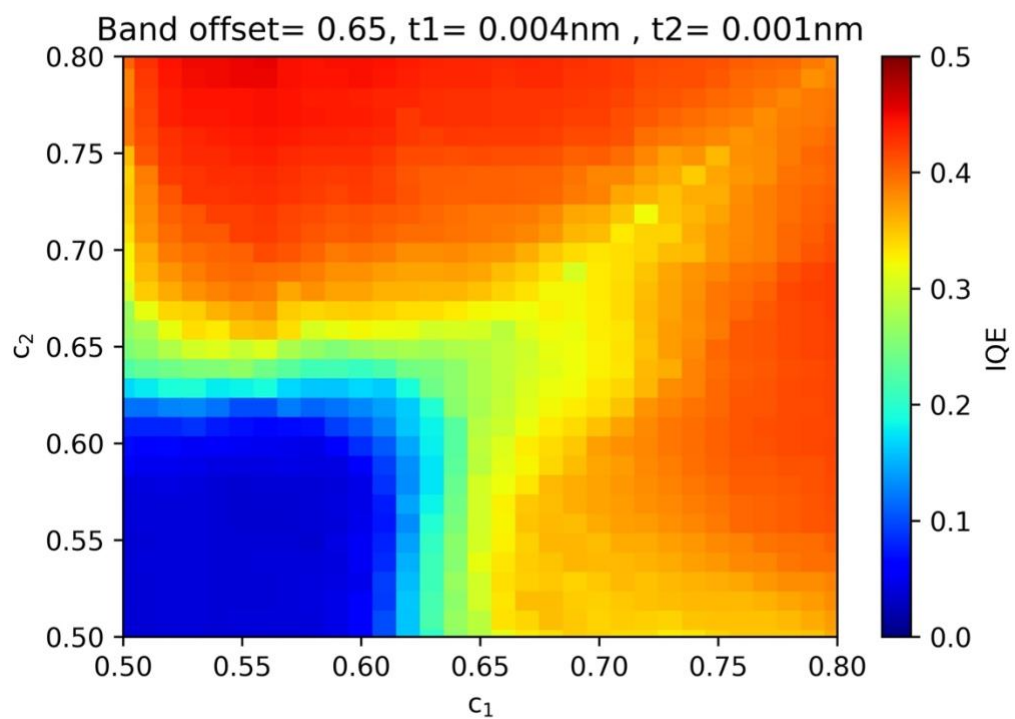
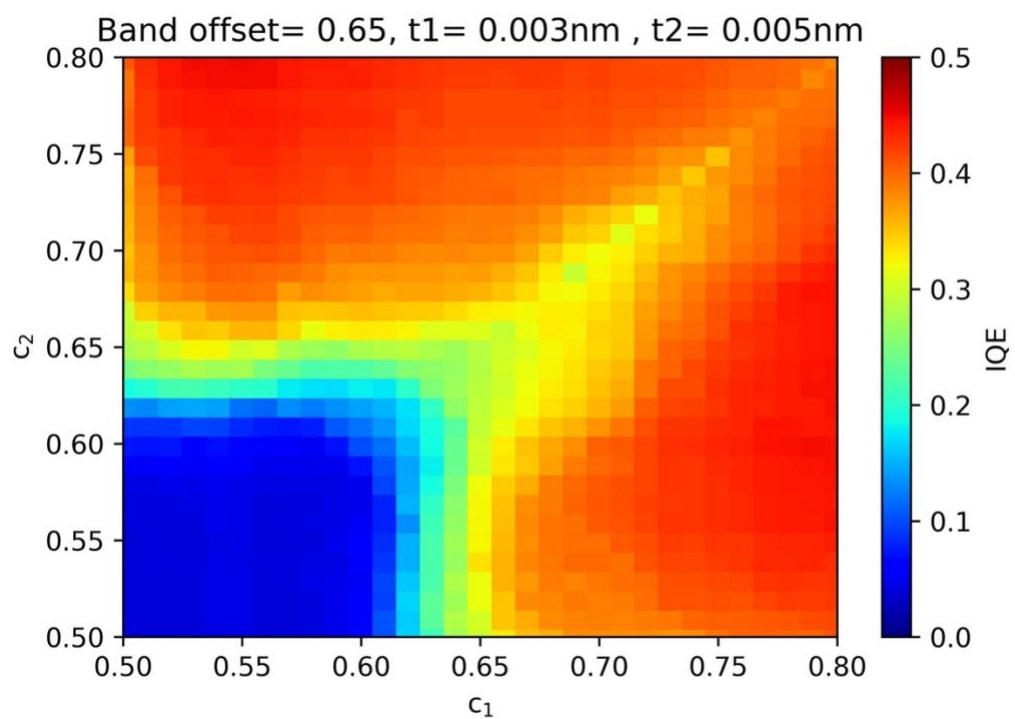


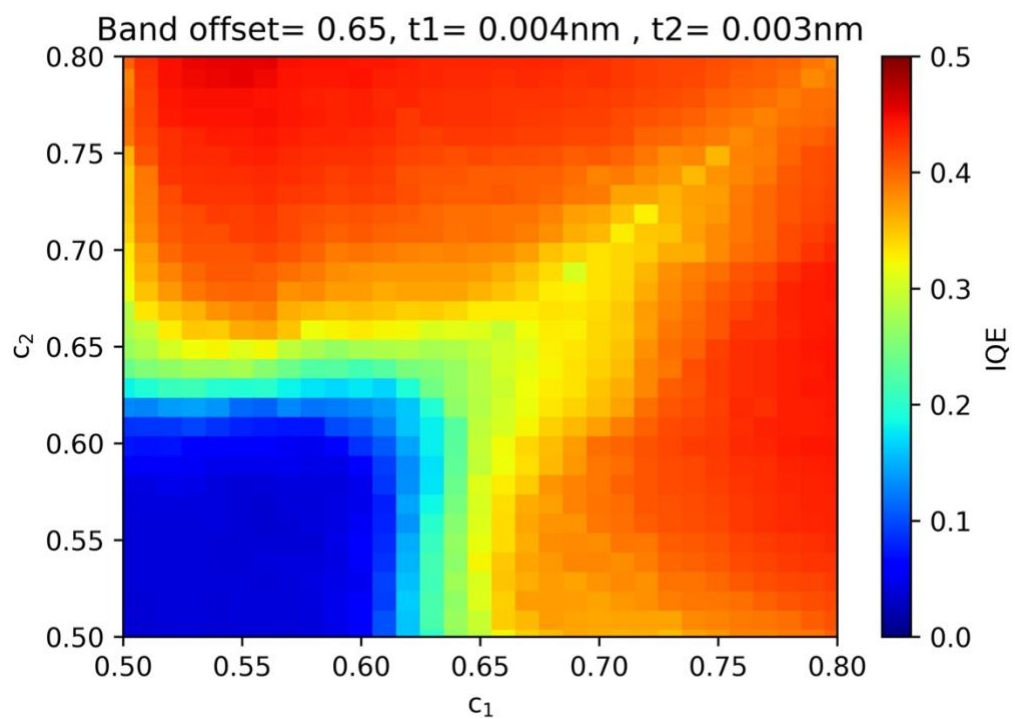
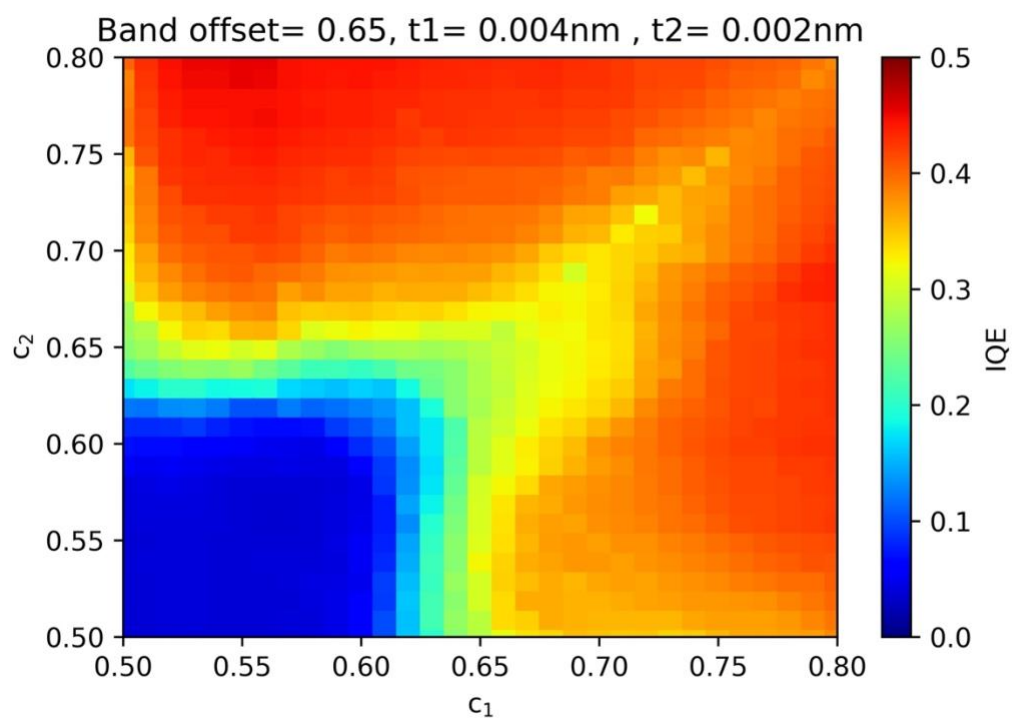


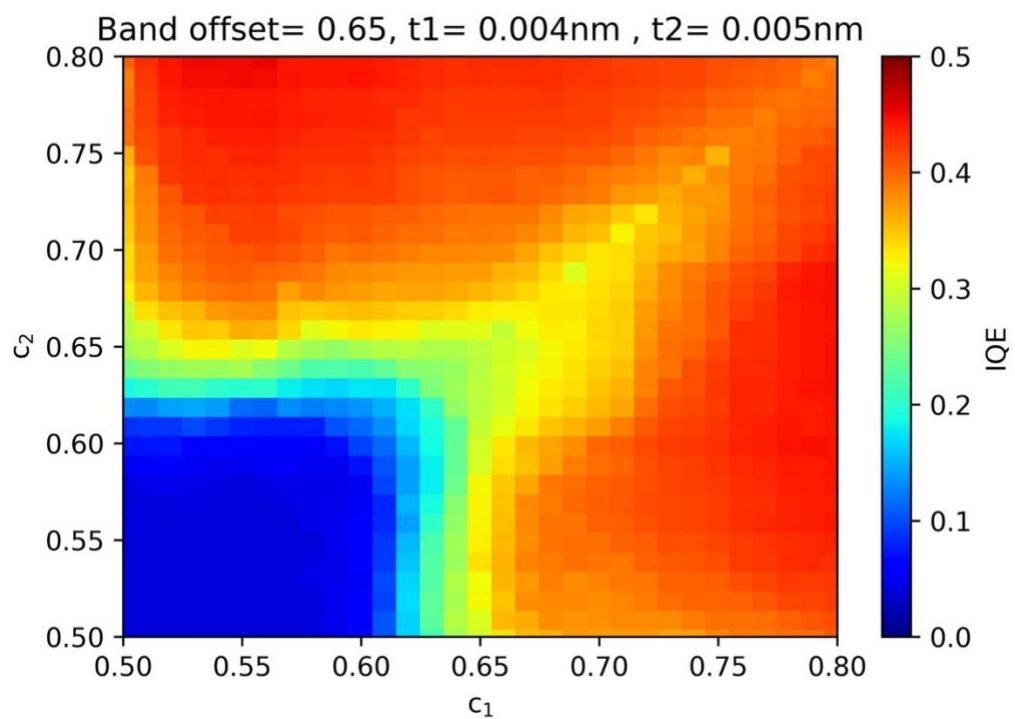
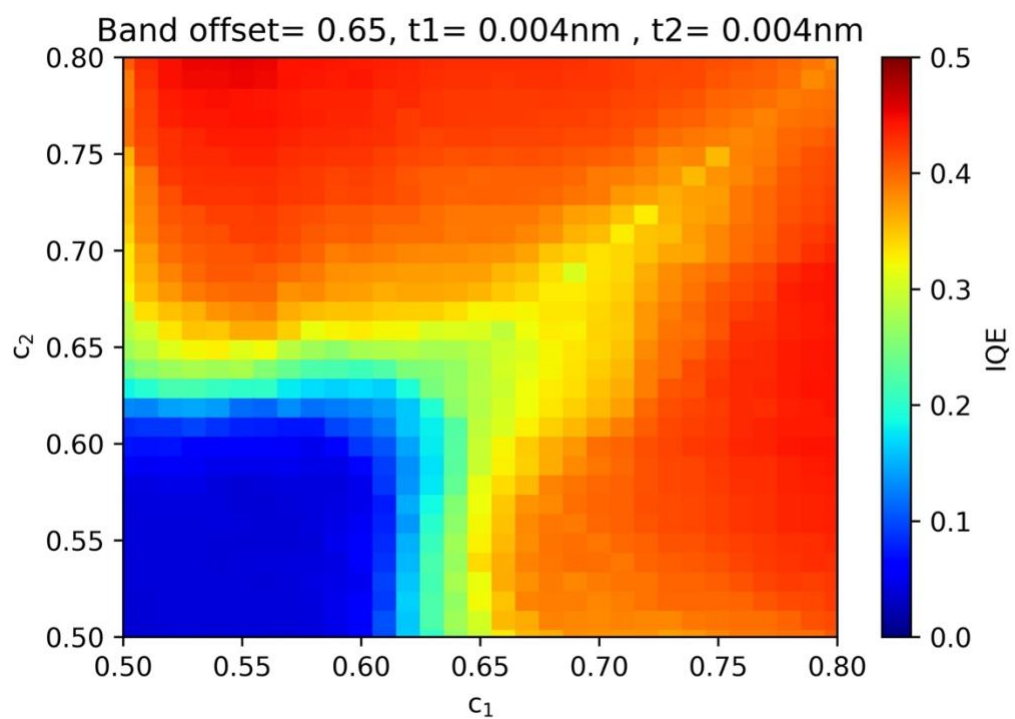


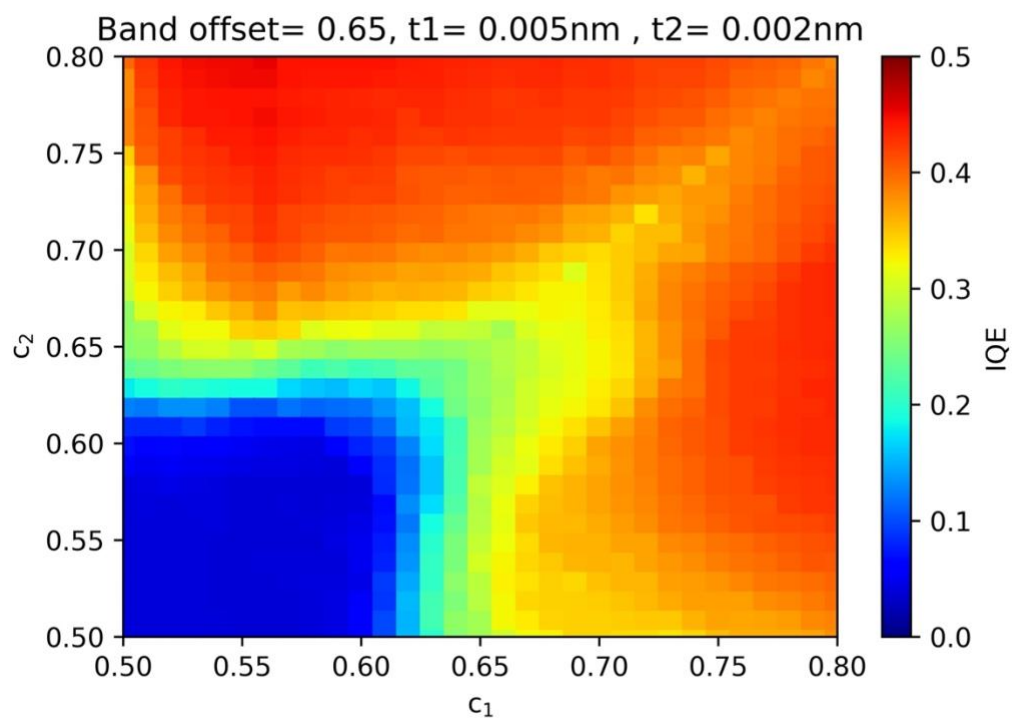
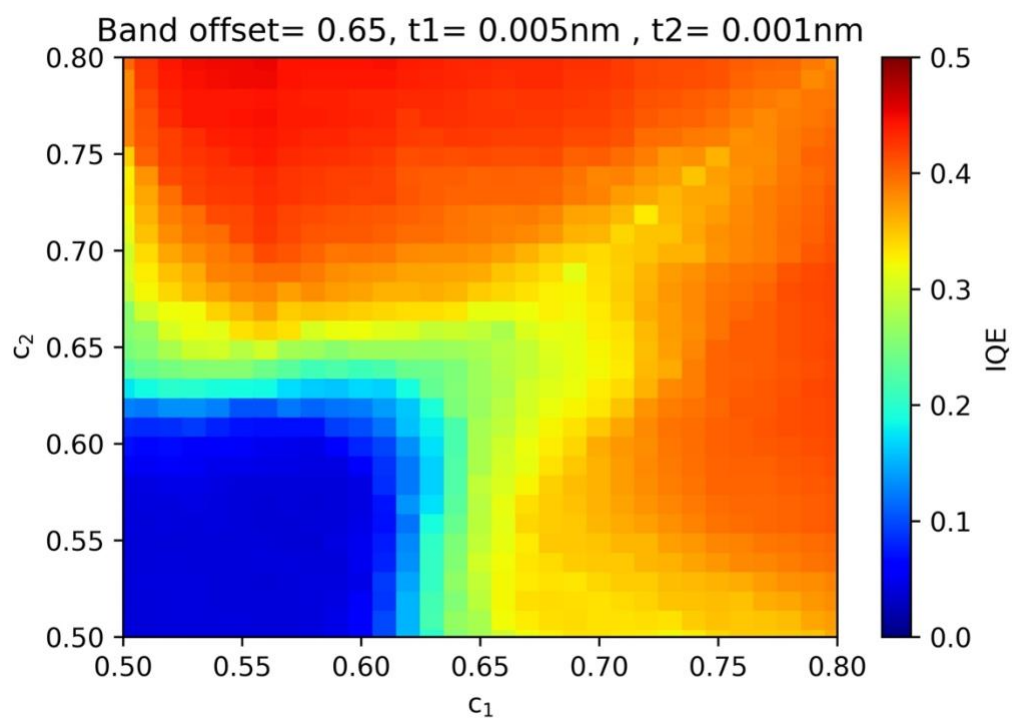


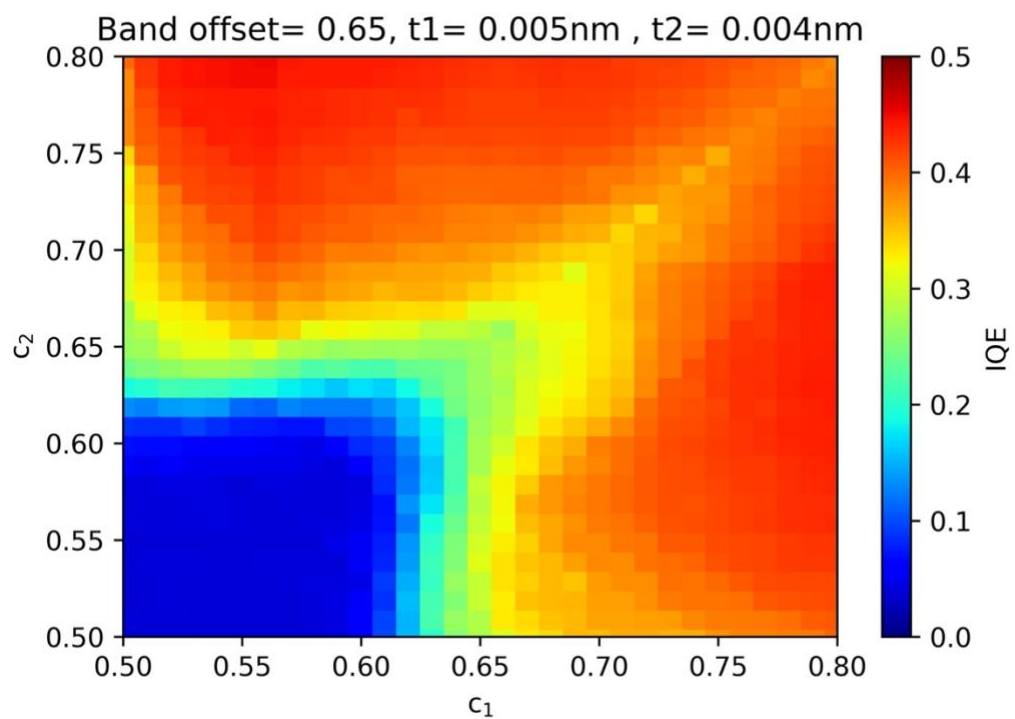
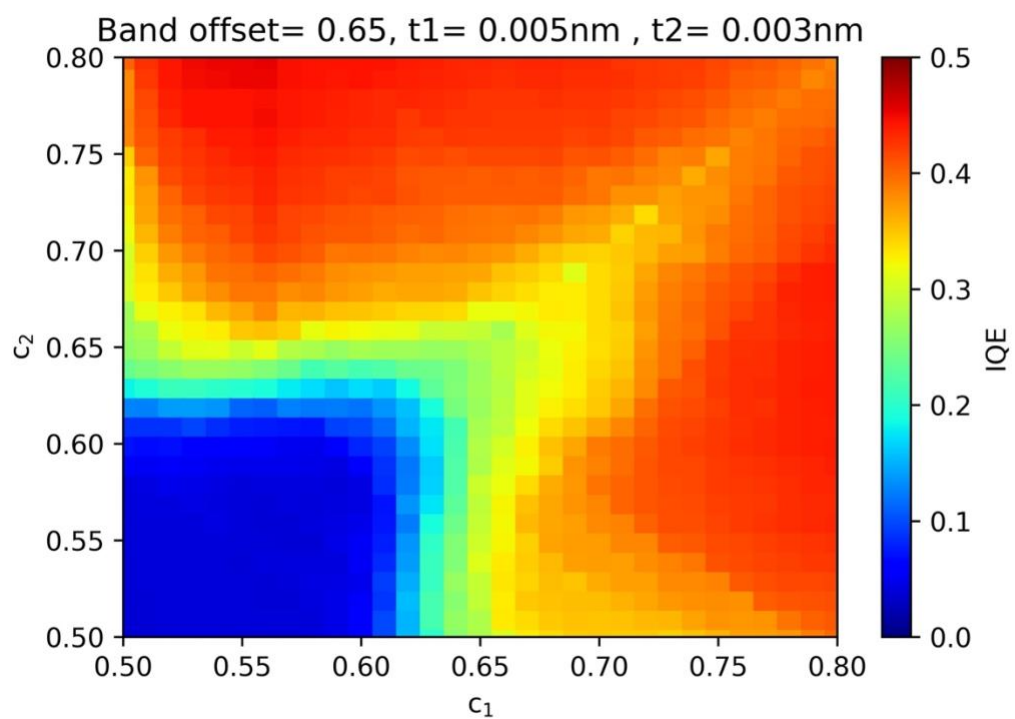


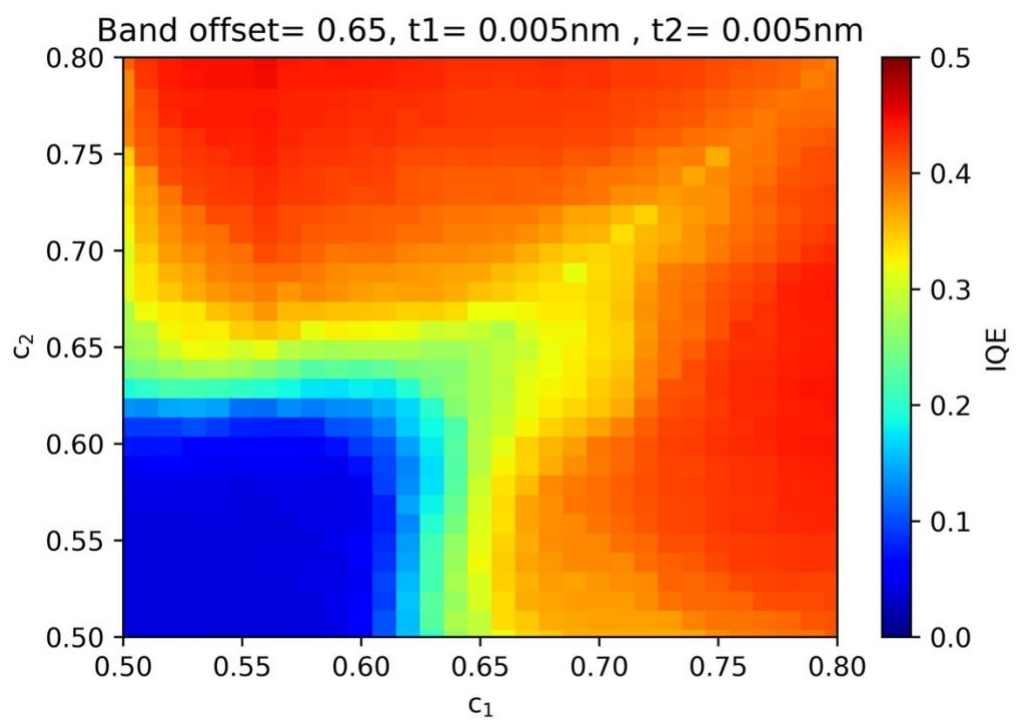












S4. Internal quantum efficiency (IQE) predictions from stacked XGBoost/LightGBM model of superlattice (SL) electron blocking layer (EBL) with different composition combinations under the band offset ratio = 0.7.

