

Electronic Supporting Information

Received 00th January 20xx,
Accepted 00th January 20xx

DOI: 10.1039/x0xx00000x

Non-destructive distinction between geogenic and anthropogenic calcite by Raman Spectroscopy combined with machine learning workflow

Sara Calandra,^{*a b} Claudia Conti,^c Irene Centauro^a and Emma Cantisani

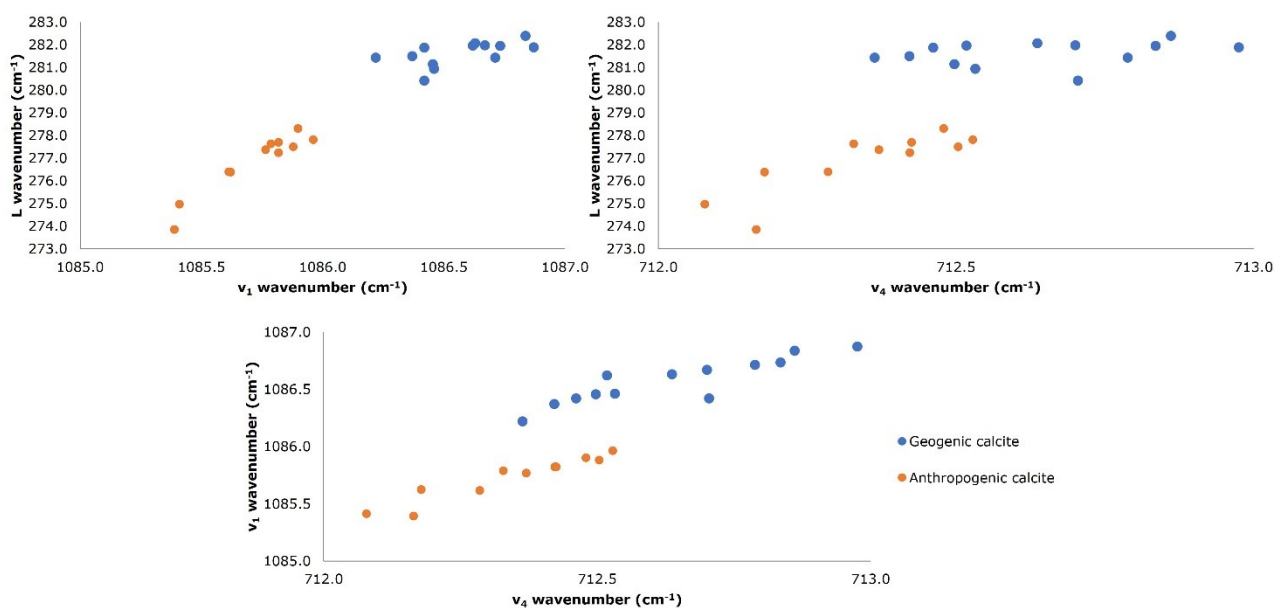


Fig. S1 2D plots of main discriminating parameters are reported, expressed as average values.

^a Department of Chemistry Ugo Schiff, University of Florence, 50019 Sesto Fiorentino, Italy

^b Department of Earth Sciences, University of Florence, 50121 Florence, Italy

^c Institute of Heritage Science (ISPC), National Research Council (CNR), 20125 Milano, Italy.

^d Institute of Heritage Science (ISPC), National Research Council (CNR), 50019 Sesto Fiorentino, Italy

*Corresponding author.

Electronic Supplementary Information (ESI) available: [More details about data analysis, PDF]. See DOI: 10.1039/x0xx00000x

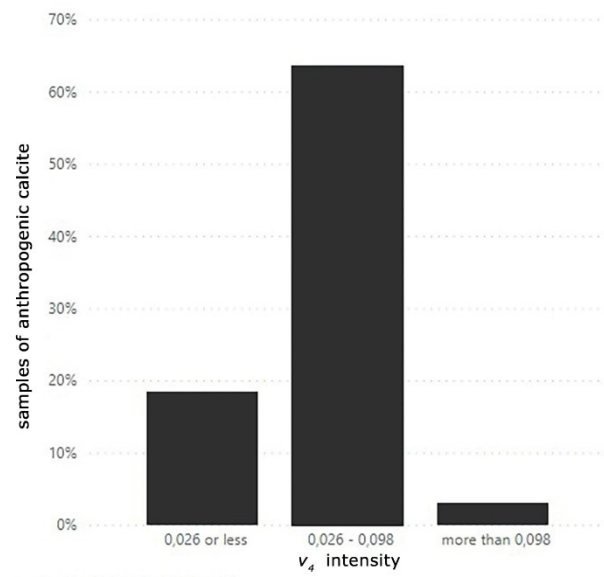


Fig. S2 Scatterplot from Key Influence Factor visual: increase in % of anthropogenic calcite samples of v_4 intensity values between 0.026 and 0.098.