

Developing an improved optical biosensing system based on gold nanoparticles acting as interferometric enhancers and its correlation with ELISA. Case of use for Lactoferrin sandwich immunoassay.

L.G. Valle, B. Santamaría, A. Lavín, M.F. Laguna, L. Rodríguez- Lorenzo, B. Espiña, M. Holgado.

Supplementary Information.

	<i>Time Assay (Min)</i>	<i>LoD (ng)</i>	<i>Volume (μL)</i>	<i>Linear detection Range (ng)</i>	<i>Label</i>
<i>ELISA</i>	270	0.1078	100	1.5-375	Labeled
<i>IODM</i>	210	0.0237	1.5	0.15-375	Label-free
<i>μPAD</i>	10	200	2	0-8000	Label-free

Table 1S: Table comparing differences among mentioned methods.

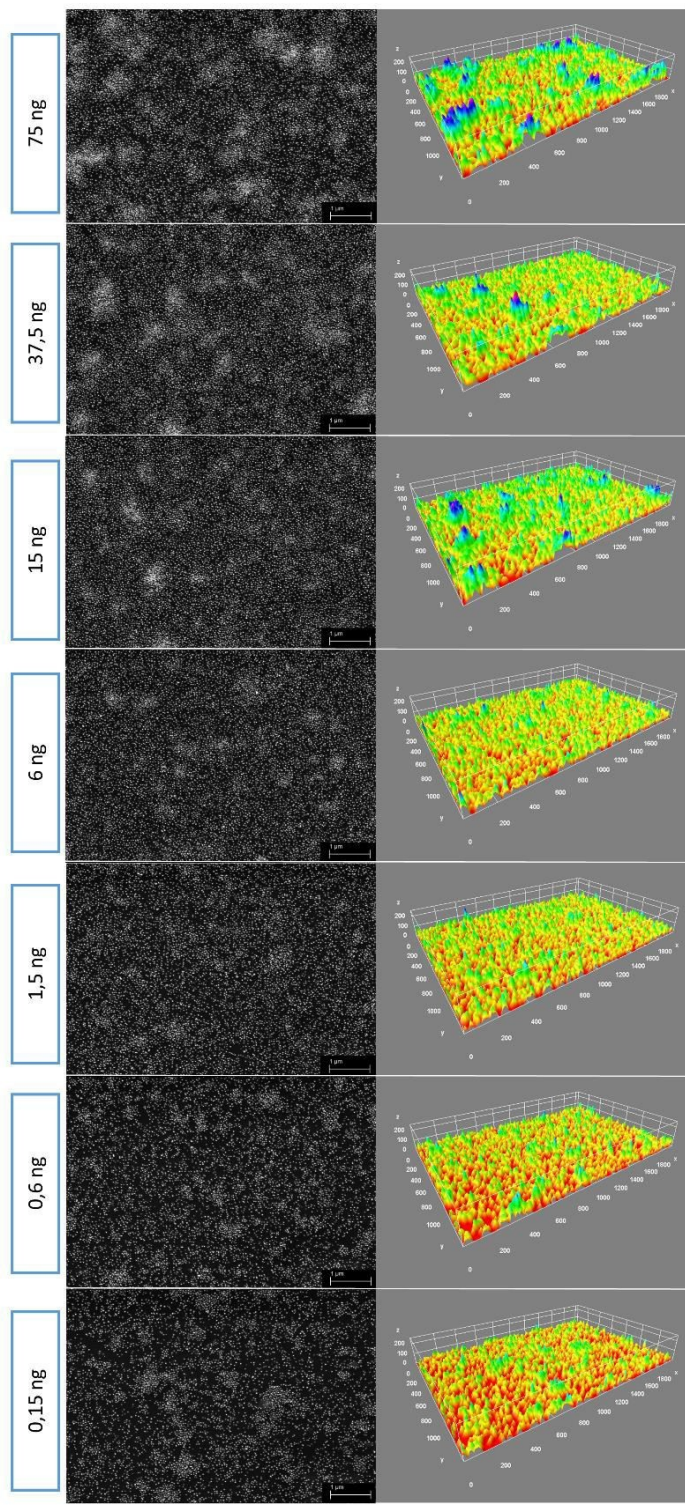


Figure 1S: SEM images of one biosensor for each Lactoferrin concentration of the sandwich essay in the first column. A surface 3D modeling of each image is represented in the second column.