

## **Electronic Supplementary Information**

# **Casting Liquid PDMS on the Self-assembled Bilayer Polystyrene Nanospheres to Prepare SERS Substrate with Two Layers of Nanopits for Detection of P-Nitrophenol**

Xiurui Ke,<sup>a,b</sup> Jinran Chen,<sup>c, b</sup> Lin Chang,<sup>b</sup> Zhou Zhou<sup>d</sup> and Wei Zhang<sup>\*a,b</sup>

<sup>a</sup> College of Resources and Environment, University of Chinese Academy of Sciences, Beijing 100049, P. R. China.

<sup>b</sup> Chongqing Institute of Green and Intelligent Technology, Chinese Academy of Sciences, Chongqing 400714, P.R. China.

<sup>c</sup> Chongqing Jiaotong University, Chongqing, 400074, China.

<sup>d</sup> The University of Manchester, Department of Materials, Oxford Road, Manchester M13 9PL UK.

\* Corresponding author: Wei Zhang, E-mail: zhangwei@cigit.ac.cn

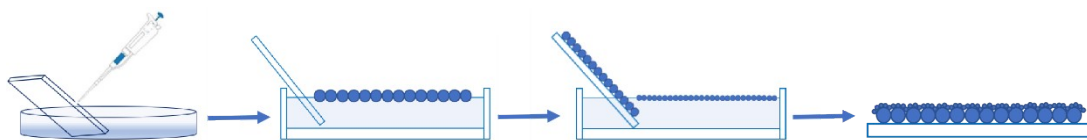


Fig. S1 The self-assembly equipment for the binary PS PC.

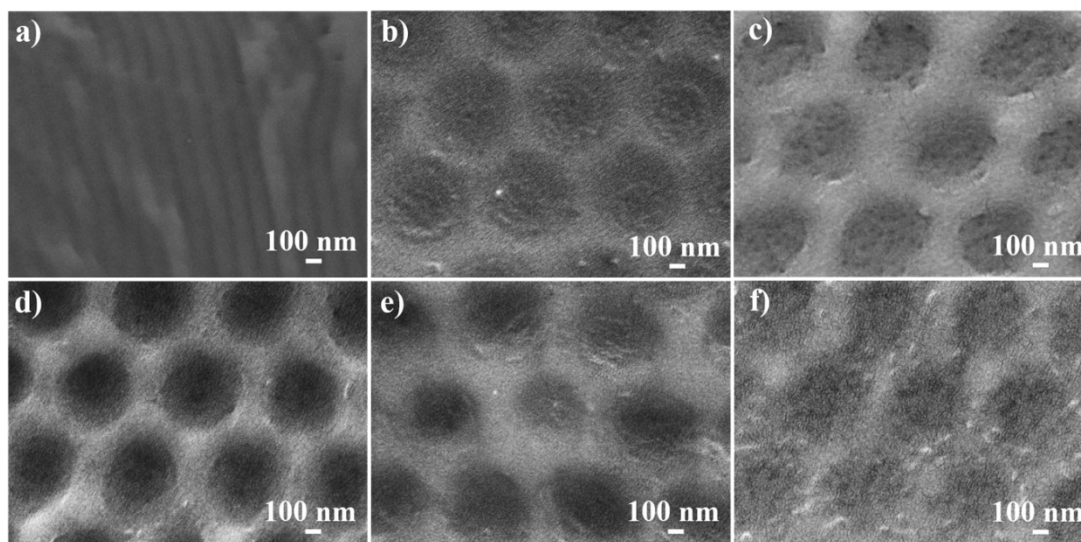


Fig. S2 The complementary PDMS structures by PDMS casting the binary PS PC etched with different duration. a) 0 min, b) 1 min, c) 1.5 min, d) 2 min, e) 2.5 min, f) 3 min

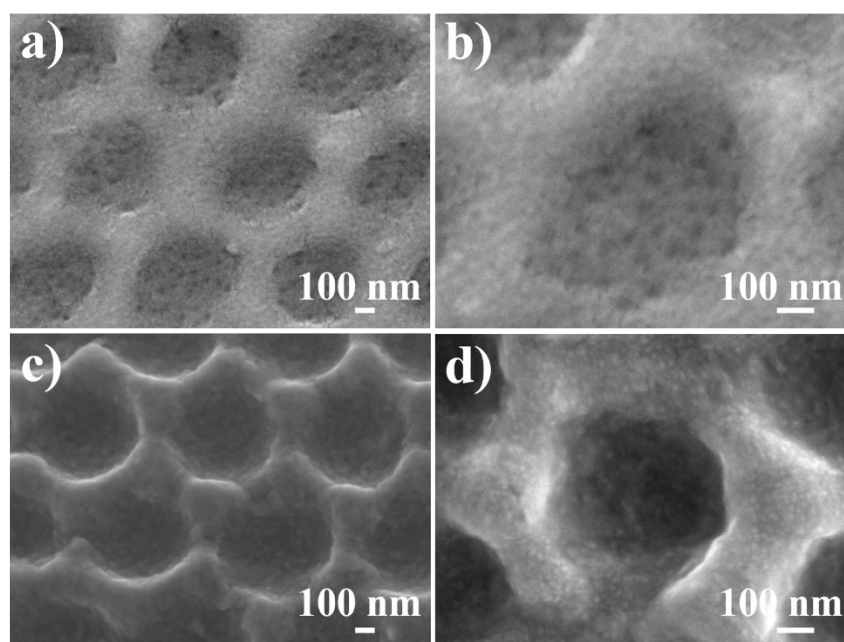


Fig. S3 a-b) SEM images of the PDMS-Ag substrate without Ag. c-d) SEM images of the PDMS-Ag substrate.

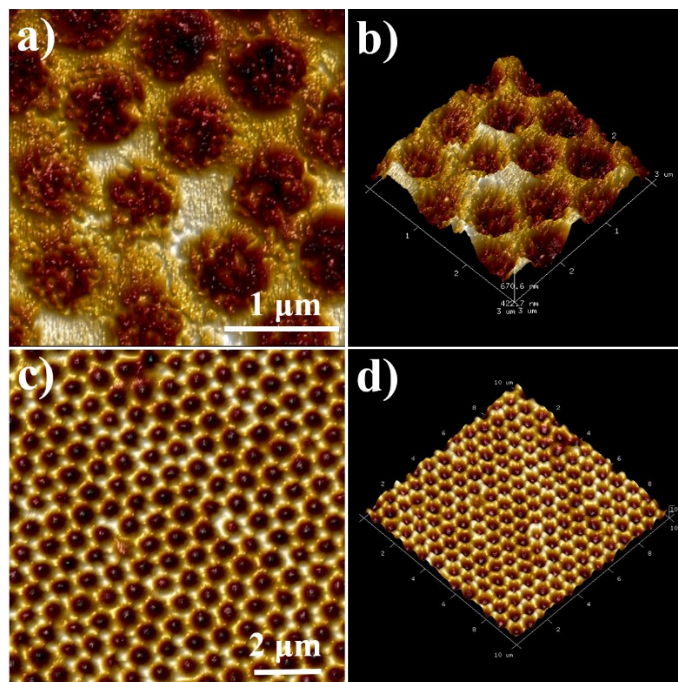


Fig. S4 a-d) AFM images of the PDMS-Ag substrate without Ag.