

Supporting information

Preparation and performance study of a fluorescent probe of rhodamine B naphthylamide for the detection of Fe³⁺

Jialin Wang, Shenghua Lv *, Jingjing Zuo, Shan Liang, Juhui Yang, Leipeng Liu
Dequan Wei, *

College of Bioresources Chemical and Materials Engineering, Shaanxi University of Science and Technology,

Xi'an 710021, China;

* Correspondence: Weidquan@hotmail.com (D.W.); lvsh@sust.edu.cn (S.L.); Tel.: +86-298-616-8291 (X.L.)

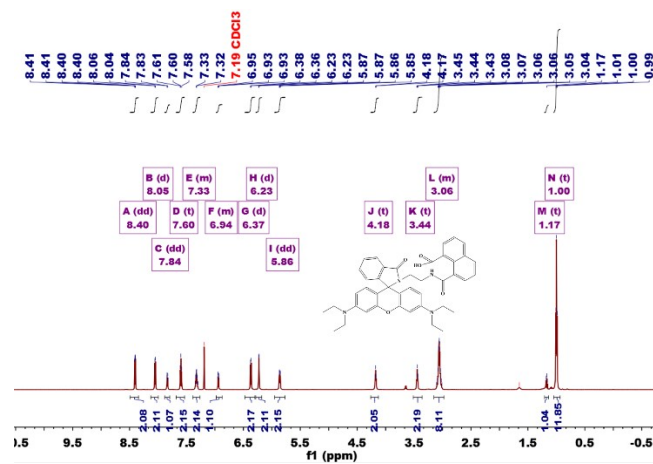


Figure S1. NMR ^1H spectra of the fluorescent probe NA-RhBEA.

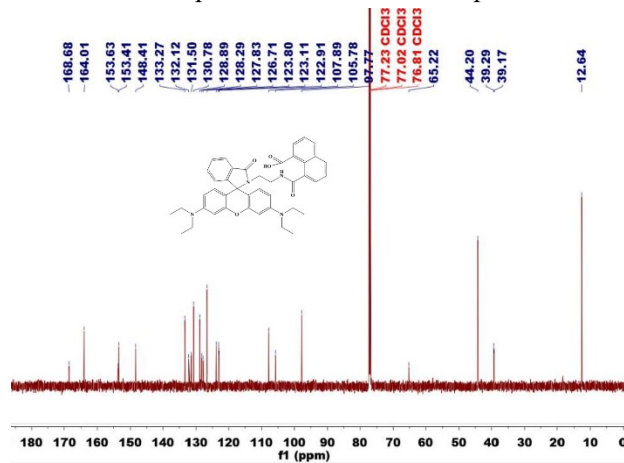


Figure S2. NMR ^{13}C spectra of the fluorescent probe NA-RhBEA.

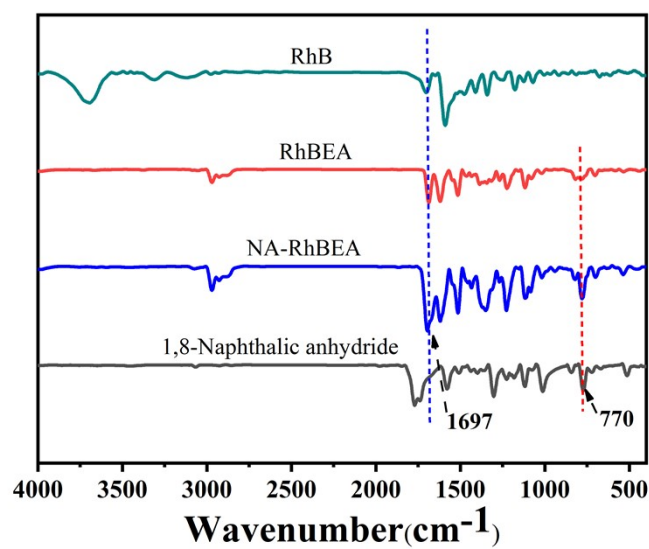


Figure S3. FT-IR spectra of RhB, RhBEA, 1,8-NA and NA-RhBEA;

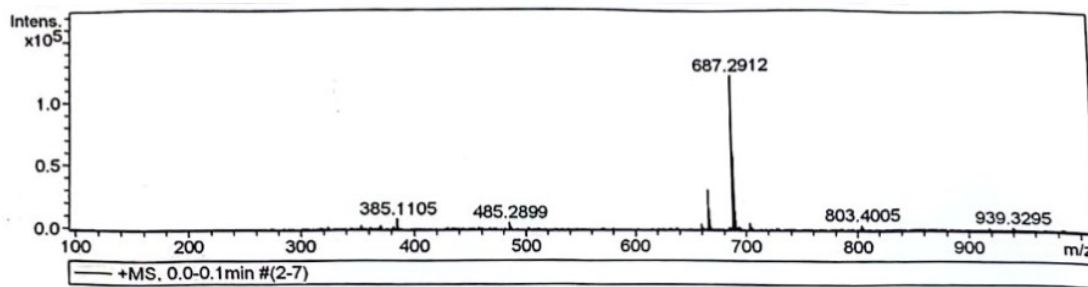


Figure S4. Mass spectra of NA-RhBEA.

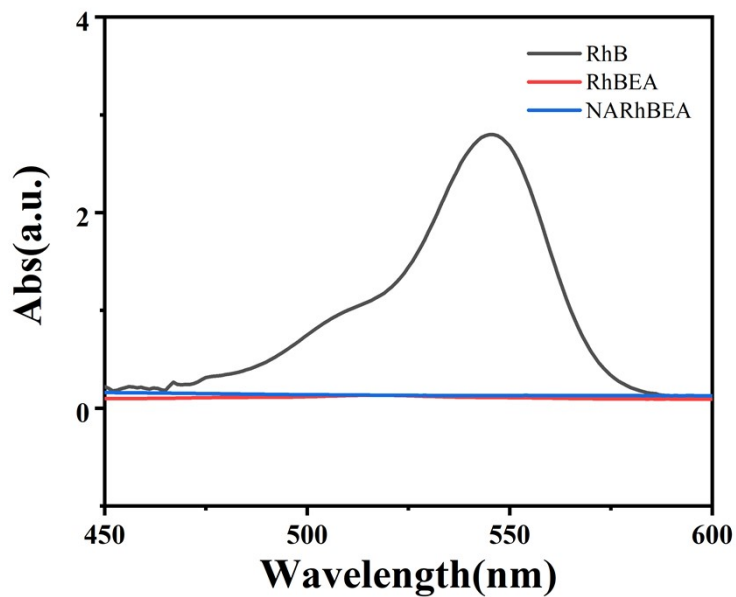


Figure S5. UV-Vis absorption spectra of RhB, RhBEA and NA-RhBEA.

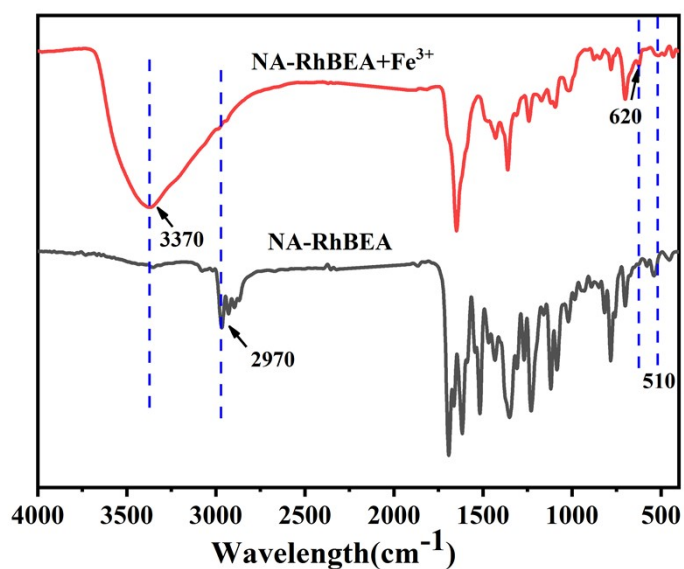


Figure S6. Group changes of NA-RhBEA before and after complexation with Fe^{3+} .