

Supplementary File

Bortezomib-loaded mixed micelles realize a "three-in-one" effect for enhanced breast cancer treatment

Jianhao Liu^{1 †}, Xiaoman Xu^{1 †}, Yanying Li², Jingxia Xu¹, Ruogang Zhao¹, Siwei Liu², Jingliang Wu², Li Zhang^{1,3 *}, Bo Zhang^{1 *}

1. School of Pharmacy, Weifang Medical University, Weifang 261053, P.R. China.

2. School of Bioscience and Technology, Weifang Medical University, Weifang, Shandong, 261053, P.R. China.

3. College of Traditional Chinese Medicine, Weifang Medical University, Weifang 261053, Shandong, P.R. China.

* Corresponding authors: zhangli2020@wfmc.edu.cn (L. Zhang); zhangbo@wfmc.edu.cn (B. Zhang); Tel.: +86-536-8462490.

† These authors contributed equally to this work.

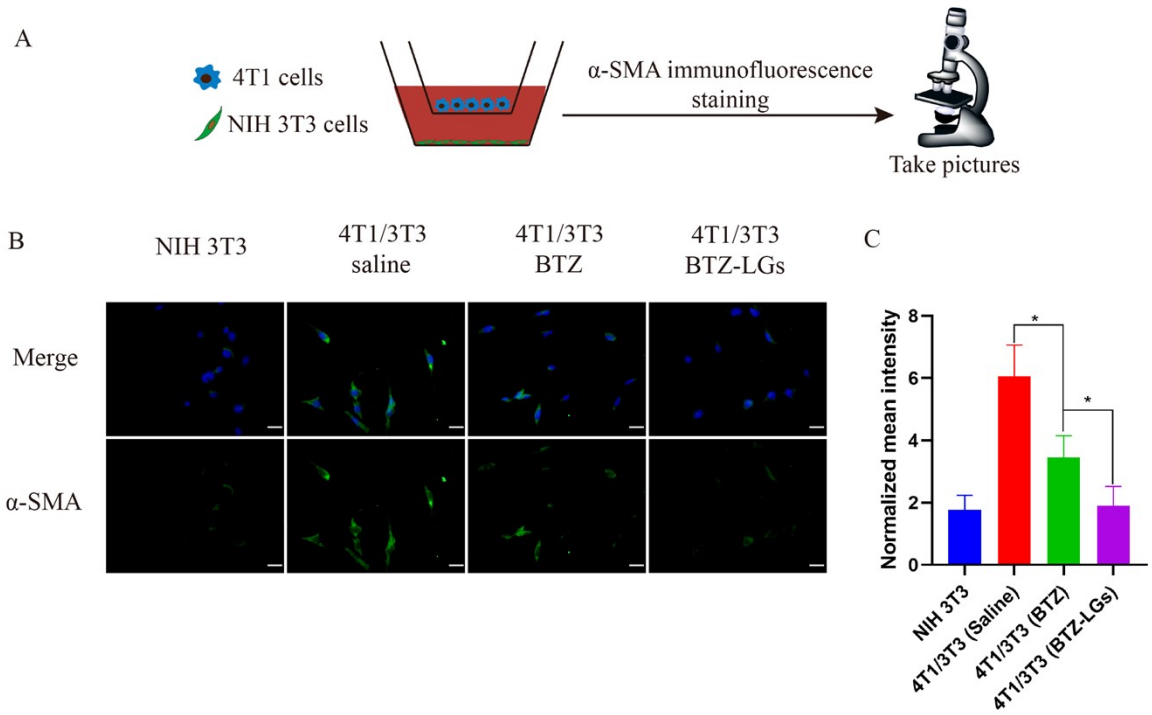


Fig.S1. α -SMA expression of different formulations by transwell chamber assay ($*P<0.05$)

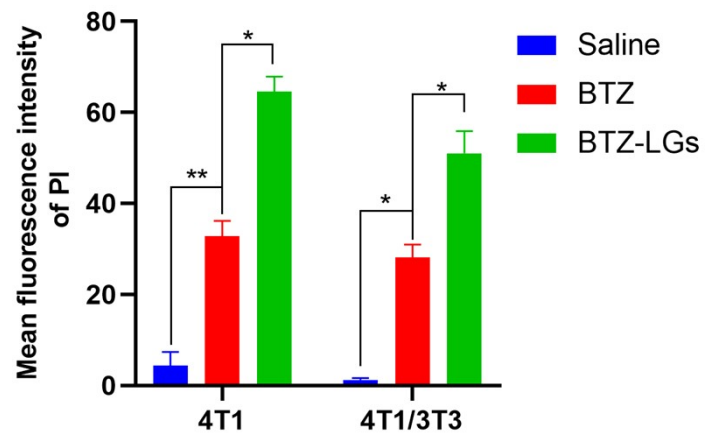


Fig. S2. The quantitative graph of PI/AM staining ($*P<0.05$, $**P<0.01$).

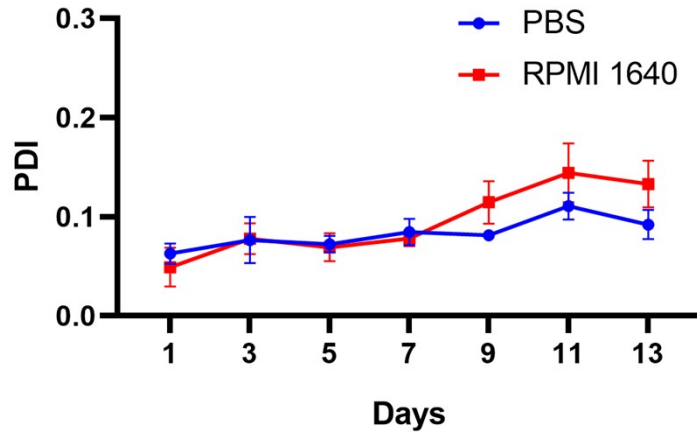


Fig. S3. Size changes of BTZ-LGs in PBS and RPMI 1640 medium.

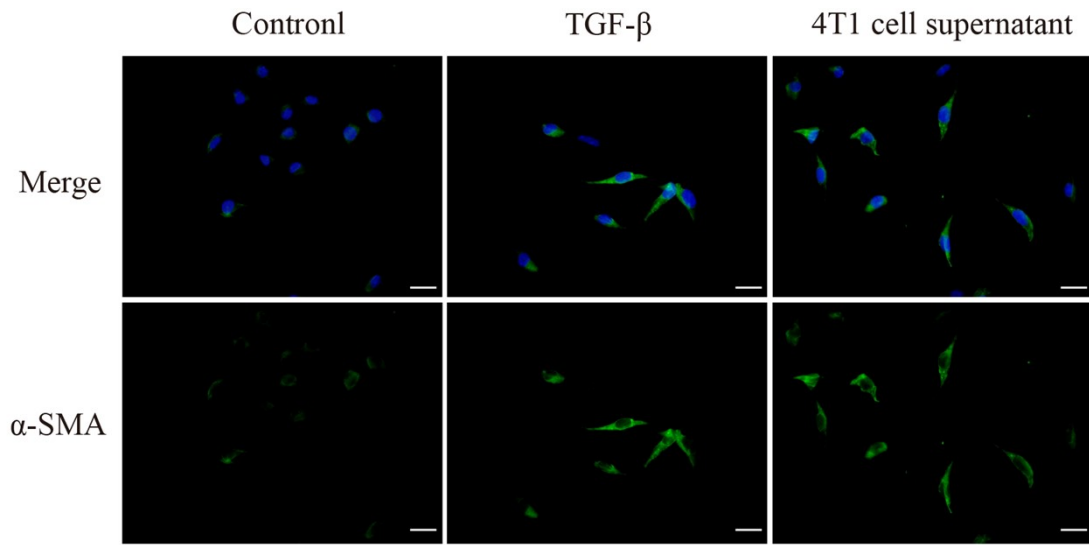


Fig. S4. α -SMA expression after treatment by TGF β or 4T1 supernatant

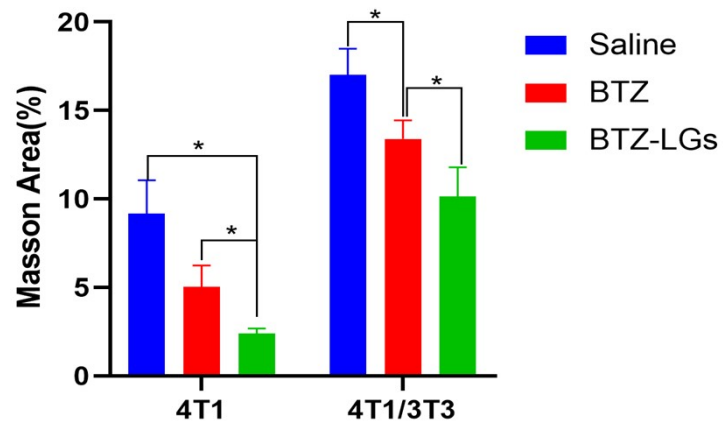


Fig. S5. quantification for the collagen deposition (* $P < 0.05$).

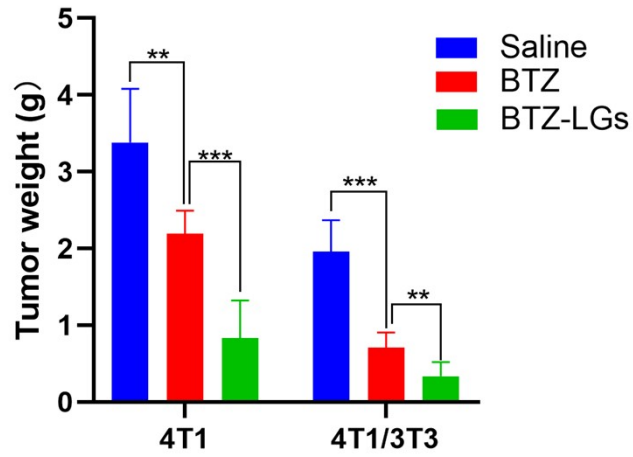


Fig. S6. Tumor weights in mice after drug treatment (** $P < 0.01$, *** $P < 0.001$).

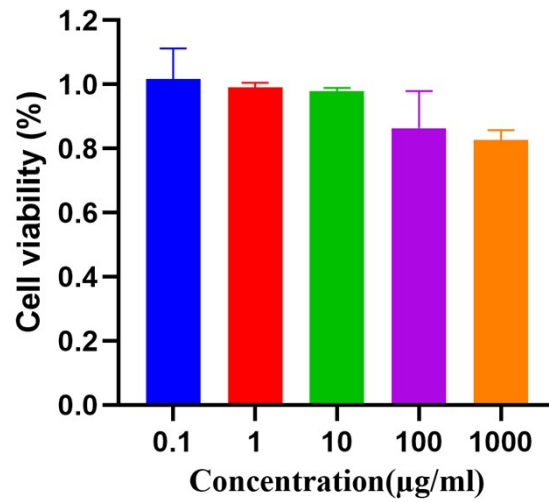


Fig. S7. Viability of co-cultured cells (ratio of 4T1 to NIH 3T3 cells was 1:2) after incubation with LGs at different concentrations for 48 h.