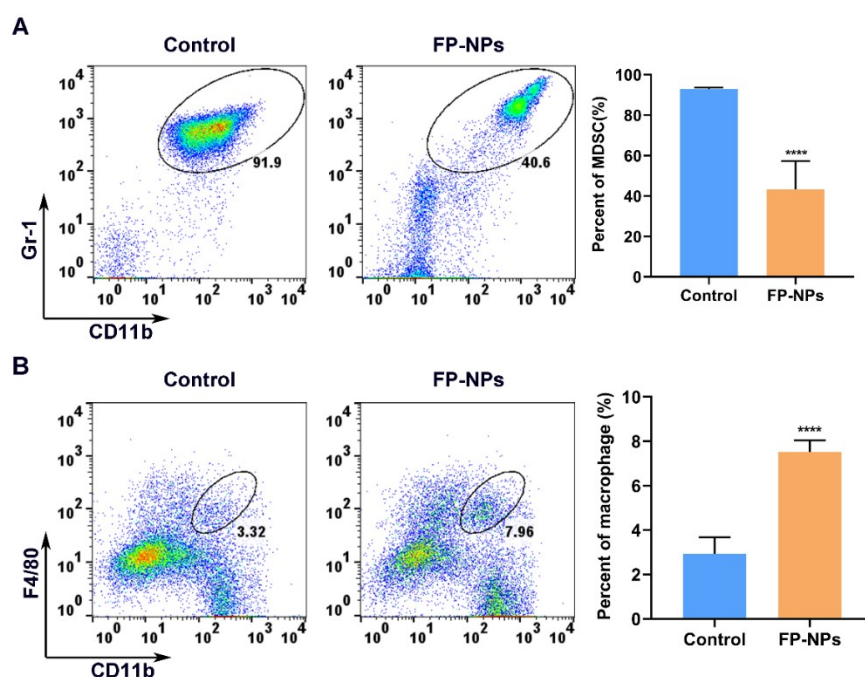


Supplementary Fig. 1 Analysis and identification of bone marrow-derived MDSCs by flow cytometry.



Supplementary Fig. 2 (A) The altered population of MDSCs in the blood of 4T1 mice treated with PBS and FP-NPs. (B) The altered population of macrophages in the lung of 4T1 mice treated with PBS and FP-NPs. All results are represented as mean \pm S.D. **** $P < 0.0001$.