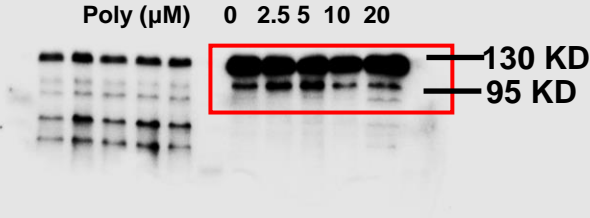


Raw western blot images

The corresponding blots used in the manuscript were circled with red or black rectangles

Figure 3F

The red box is targeted PARP



The red box is targeted β-actin

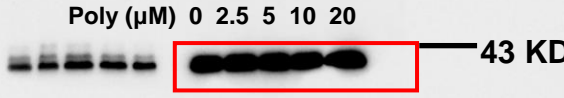
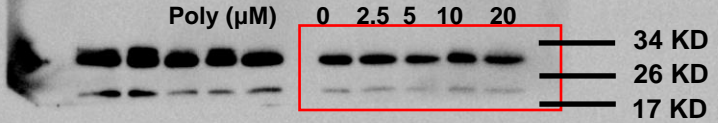


Figure 3G

Red box is Caspase-3



Red box is β-actin

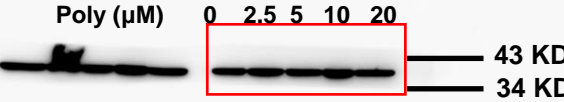
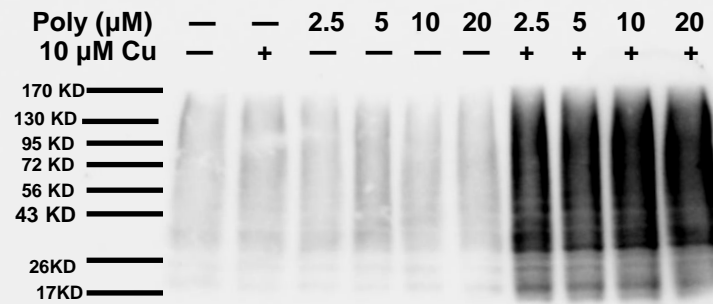
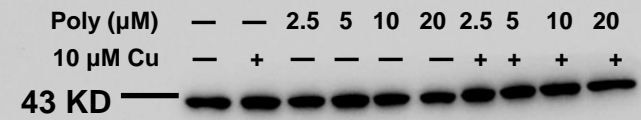


Figure 4A



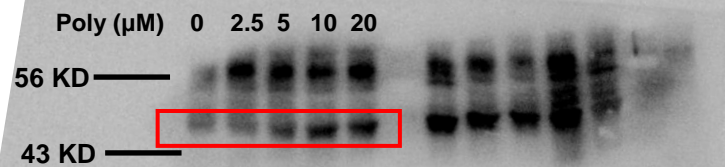
Poly-ubiquitin



β -actin

Figure 4F

The red box is targeted PD-L1



The red box is targeted β -actin

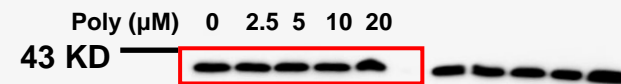
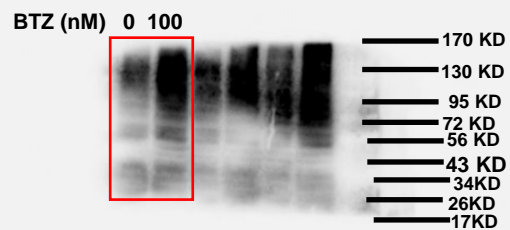


Figure 4G

Red box is targeted Poly-ubiquitin



Red box is targeted β -actin

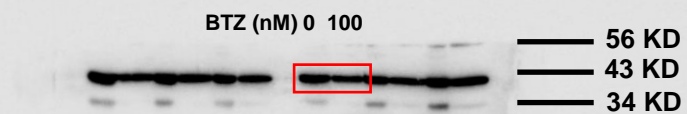
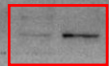


Figure 4H

Red box is targeted PD-L1

BTZ (nM) 0 100



56 KD

43 KD

Red box is targeted β -actin

BTZ (nM) 0 100



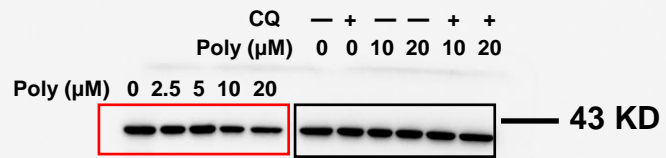
34 KD

43 KD

Figure 5B and 5E

Red box is Figure 5B β -actin

Black box is Figure 5E β -actin



Red box is Figure 5B LC3B

Black box is Figure 5E LC3B

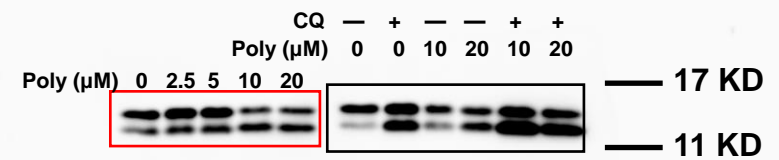
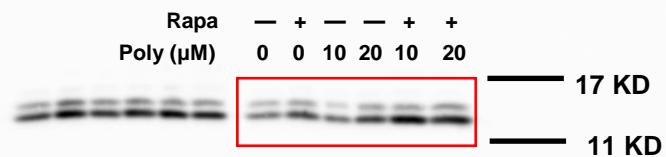


Figure 5C

Red box is targeted LC3B



Red box is targeted β -actin

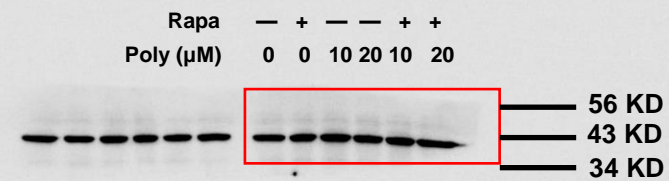
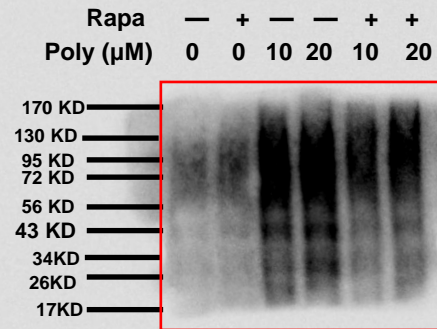


Figure 5 D

Red box is targeted Poly-ubiquitin



Red box is targeted β -actin

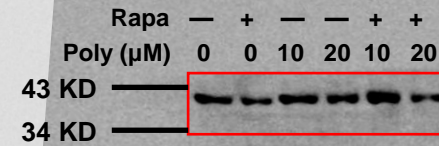
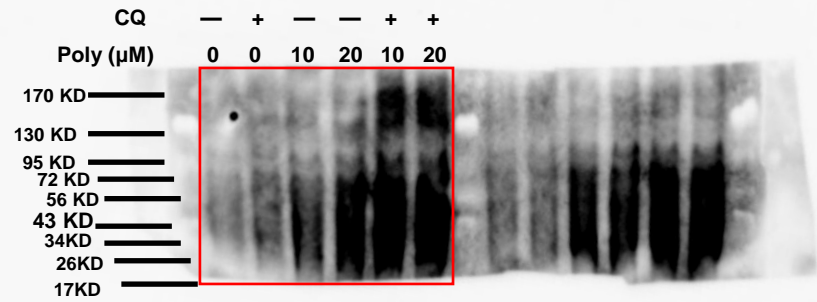


Figure 5 F

Red box is targeted Poly-ubiquitin



Red box is targeted β -actin

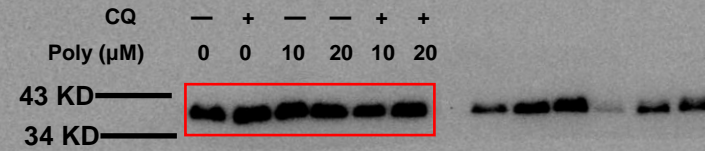
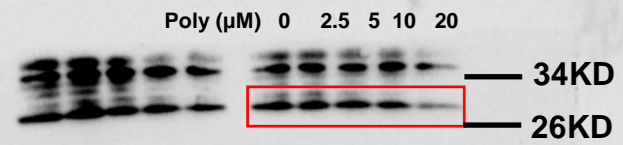


Figure 6C

Red box is targeted HMGB-1



Red box is targeted β-actin

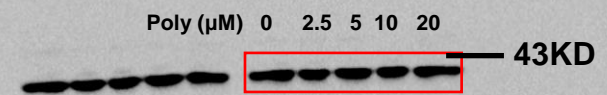
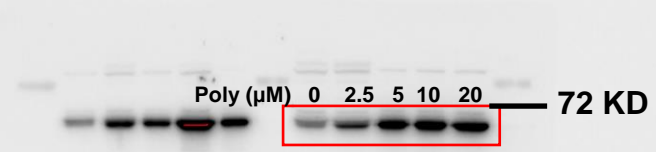


Figure 6E

Red box is targeted HSP 70



Red box is targeted β-actin

