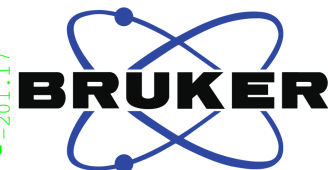


NC-262-P-19F

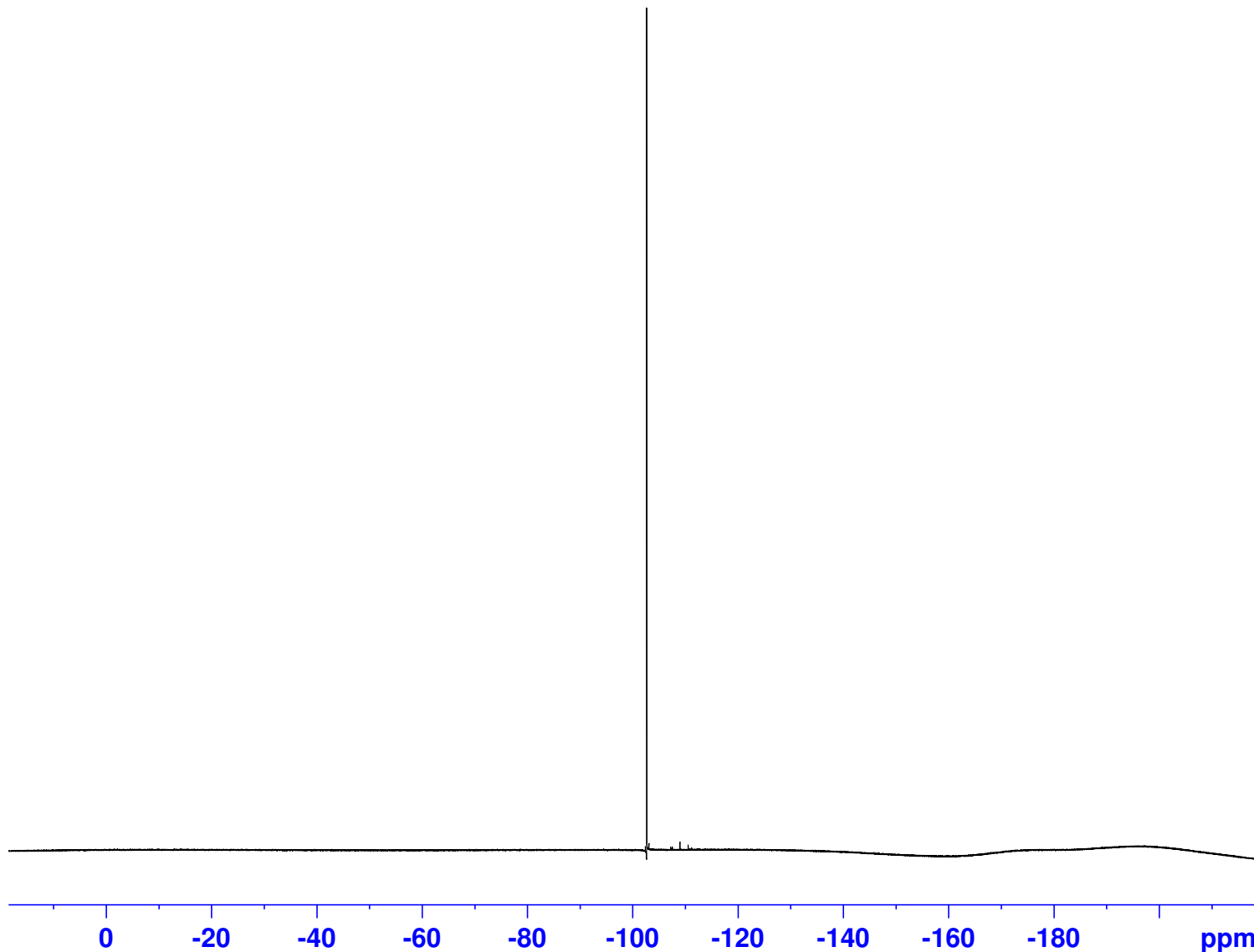
-102.43
-102.68
-102.73
-103.11
-107.55
-109.00
-110.58
-190.68
-190.72
-191.19
-191.28
-191.54
-191.72
-191.80
-191.98
-192.28
-192.37
-192.59
-192.70
-193.17
-193.38
-193.51
-193.62
-193.67
-193.73
-194.22
-194.43
-194.51
-194.68
-194.94
-195.07
-195.18
-195.25
-195.58
-195.77
-196.27
-196.31
-196.45
-196.53
-196.76
-196.84
-196.89
-197.14
-197.20
-197.24
-197.32
-197.54
-197.58
-197.79
-197.94
-198.03
-198.15
-198.34
-198.59
-198.71
-199.02
-199.09
-199.29
-199.57
-199.63
-199.98
-200.15
-200.26
-200.60
-200.75
-201.17



Current Data Parameters
NAME NC-262-P-19F
EXPNO 1
PROCNO 1

F2 - Acquisition Parameters
Date_ 20221231
Time 10.25 h
INSTRUM spect
PROBHD Z108618_0877 (
PULPROG zgfhigqn.2
TD 131072
SOLVENT CDCl3
NS 64
DS 4
SWH 89285.711 Hz
FIDRES 1.362392 Hz
AQ 0.7340032 sec
RG 199.59
DW 5.600 usec
DE 6.50 usec
TE 296.7 K
D1 1.00000000 sec
D11 0.03000000 sec
D12 0.00002000 sec
TD0 1
SFO1 376.5548010 MHz
NUC1 19F
P1 11.90 usec
PLW1 21.71199989 W
SFO2 400.2316009 MHz
NUC2 1H
CPDPRG[2] waltz16
PCPD2 90.00 usec
PLW2 14.23600006 W
PLW12 0.34941000 W

F2 - Processing parameters
SI 65536
SF 376.5924602 MHz
WDW EM
SSB 0
LB 0.30 Hz
GB 0
PC 1.00



5.79

2.39

1.82