

Supporting Information

Influence of Mo Concentration on the Structural and Electrochemical Properties of Double Doped Mo-Co-Ni₃S₂/NF Composites

Muhammad Shoaib, Fen Qiao*, Xiangchao Xu, Taihang Zhou, Yanzhen Liu

School of Energy & Power Engineering, Jiangsu University, Zhenjiang 212013, P. R. China.

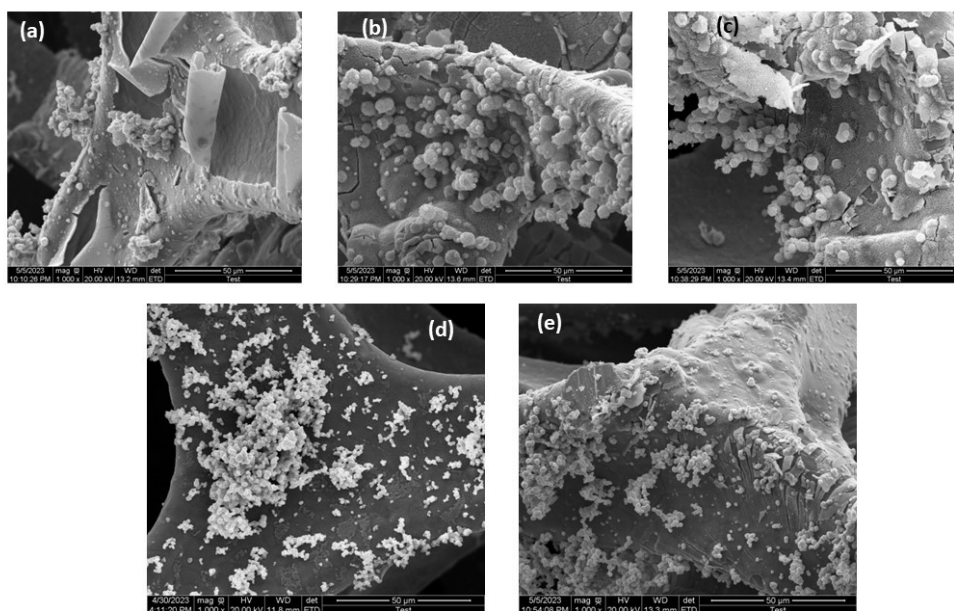


Fig.S1 SEM images of prepared samples at 50 micro meter magnification

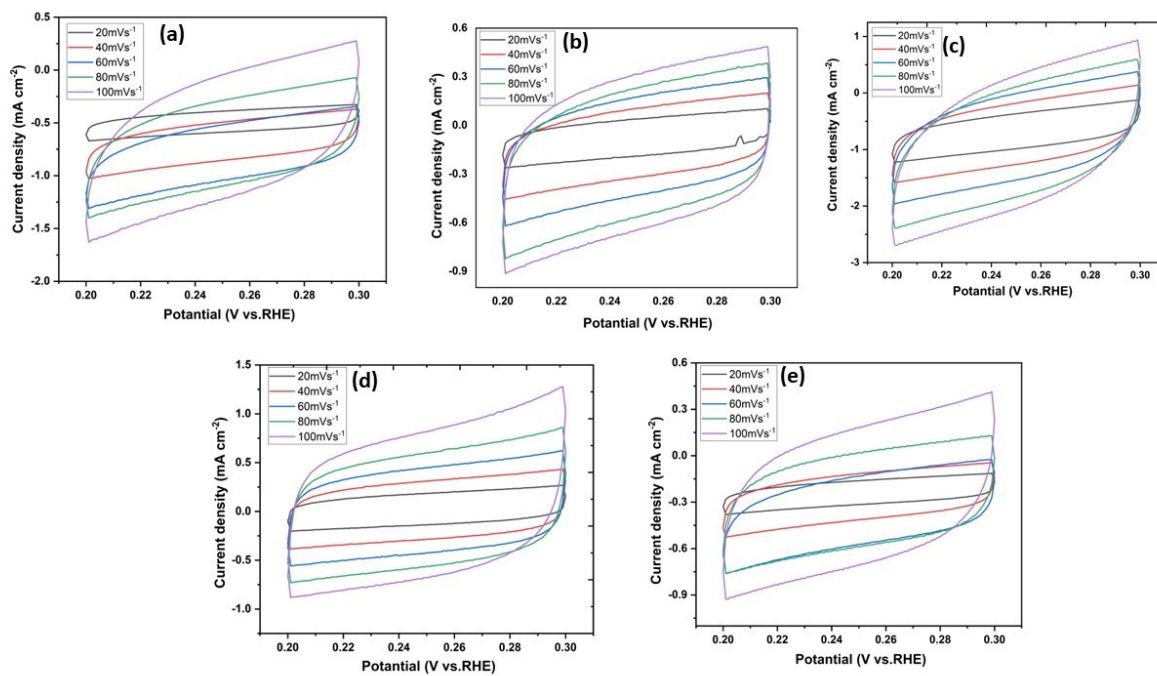


Fig.S2 CV curves for CdI at scan rates 20,40,60,80 and100 mV s⁻¹