

Supplementary Materials

**Large Valley splitting induced by spin-orbit coupling effects in  
monolayer  $W_2NSCl$**

Mengxian Lan, Suen Wang, Xiaoyu Liu, Sai Ma, Shiqian Qiao, Ying Li, Hong Wu,

Feng Li\*, Yong Pu\*

School of Science & New Energy Technology Engineering Laboratory of Jiangsu  
Province, Nanjing University of Posts and Telecommunications (NJUPT), Nanjing  
210046, China.

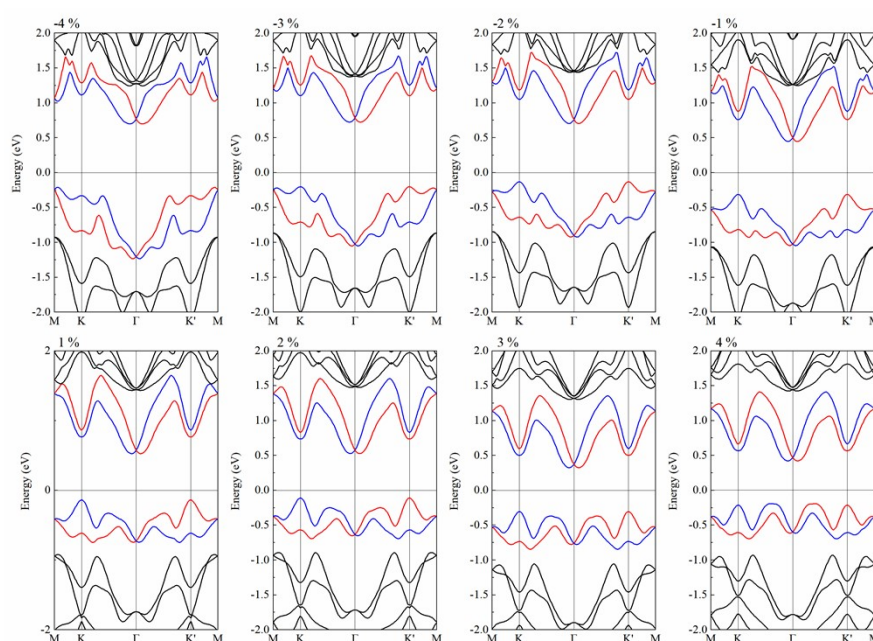


Figure S1: Band diagrams of 2D  $W_2NSCl$  after applying SOC with biaxial strain from -4% to 4%. The respective Fermi level is set to 0 eV in all the figures.