

Supporting Information

Combined Data-driven and Mechanism-based Approaches for Human-Intestinal-Absorption Prediction in Early Drug-Discovery Stage

Koichi Handa^{1}, Sakae Sugiyama², Michiharu Kageyama¹, and Takeshi Iijima¹*

¹Toxicology & DMPK Research Department, Teijin Institute for Bio-medical Research, Teijin Pharma Limited, 4-3-2 Asahigaoka, Hino-shi, Tokyo 191-8512, Japan.

²Medicinal Chemistry Research Laboratories, Teijin Institute for Bio-medical Research, Teijin Pharma Limited, 4-3-2 Asahigaoka, Hino-shi, Tokyo 191-8512, Japan.

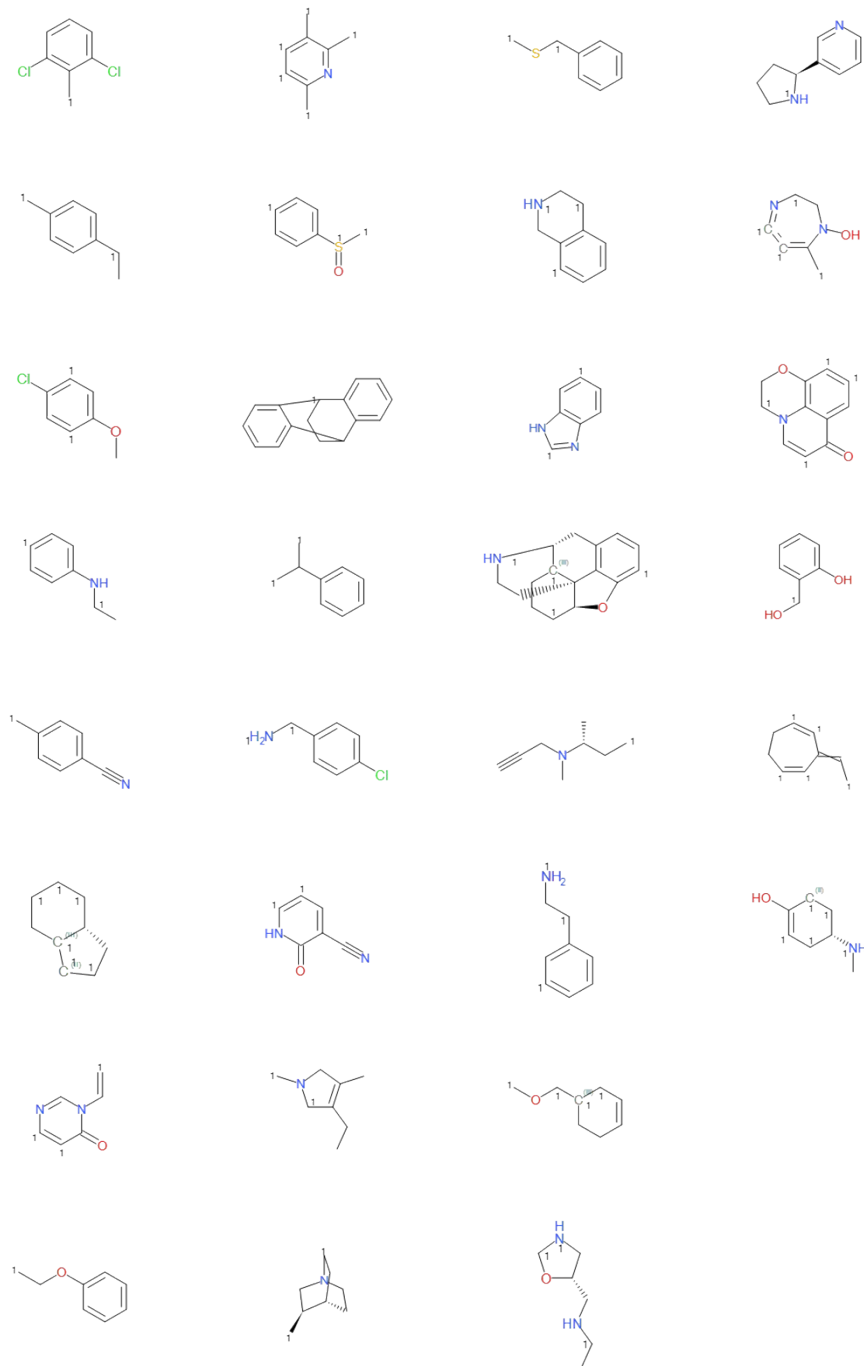


Figure S1 Important substructures for positive Fa

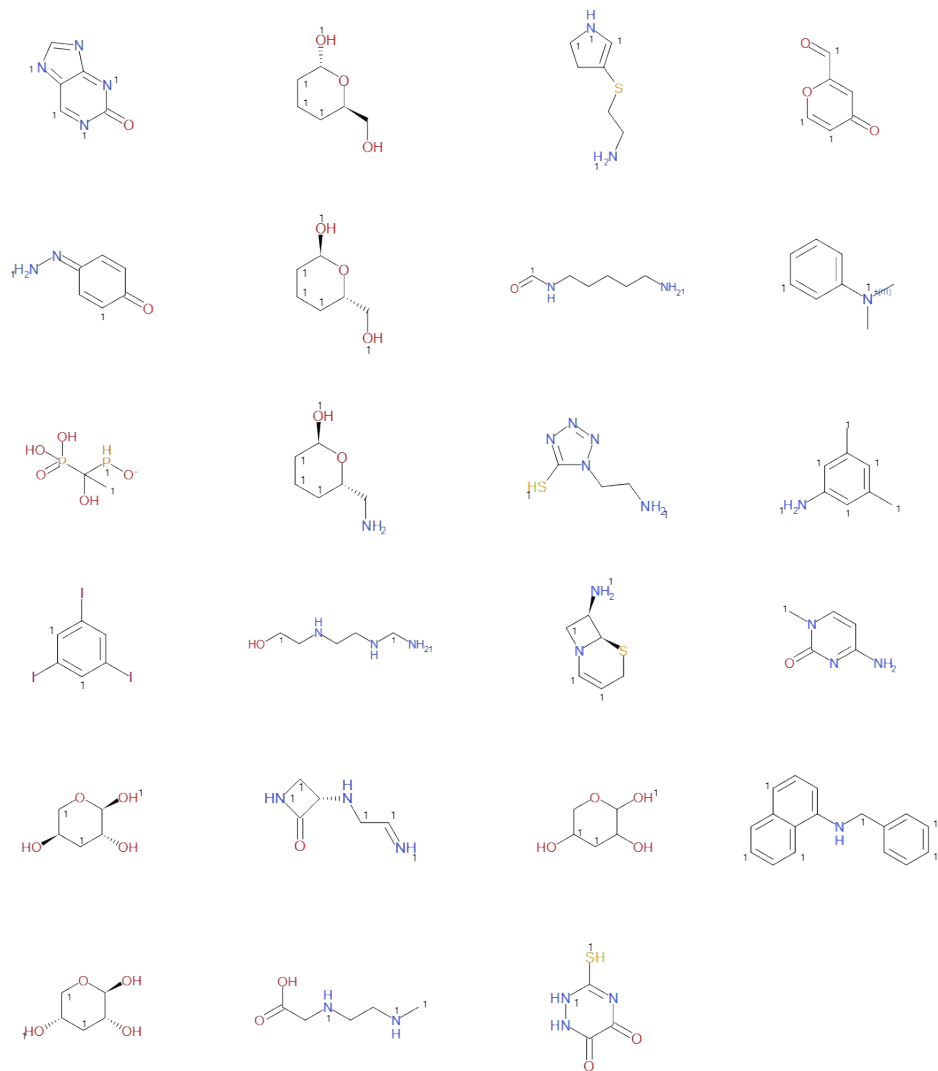


Figure S2 Important substructures for negative Fa