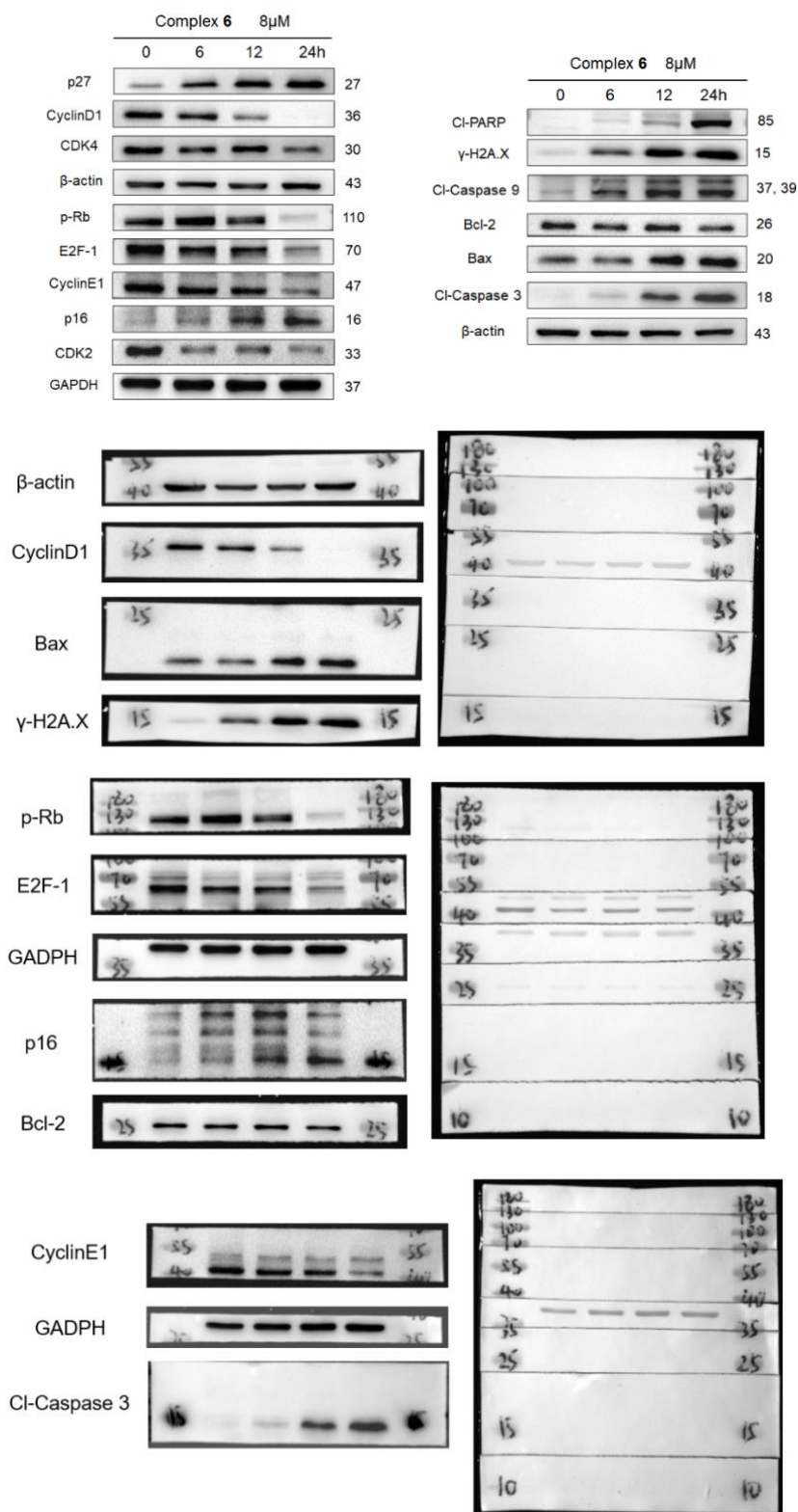


Original Images for Blots



CDK2



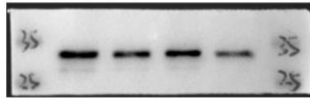
p27



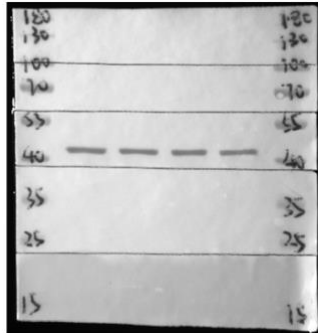
β-actin



CDK4



β-actin



Cl-PARP



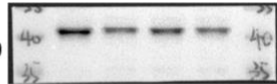
β-actin



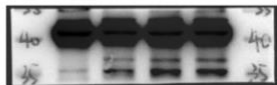
Bcl-2



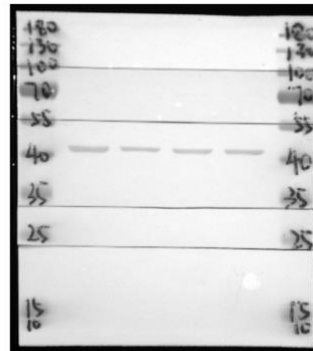
pro-Caspase 9

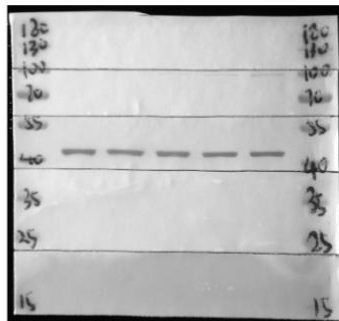
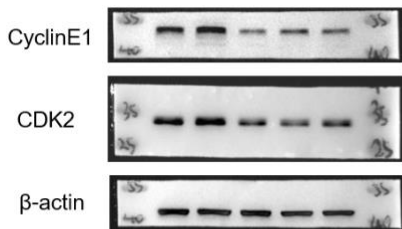
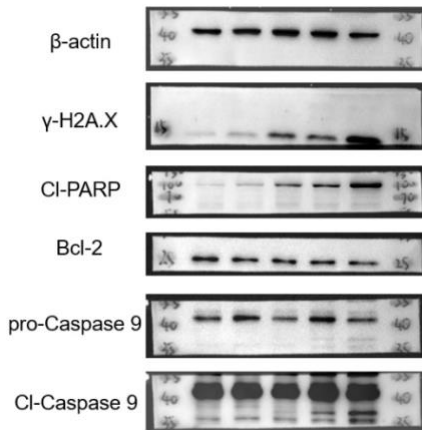
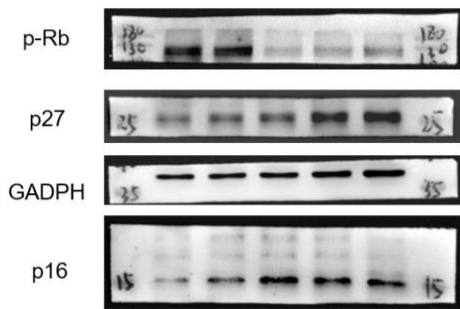
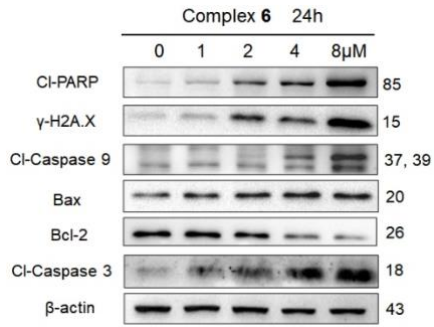
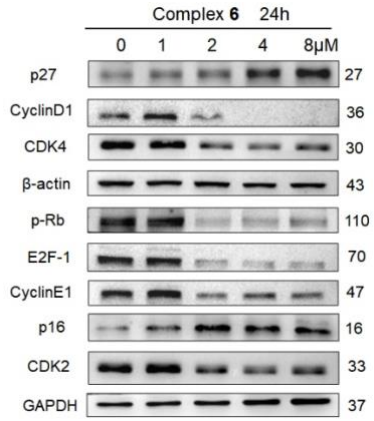


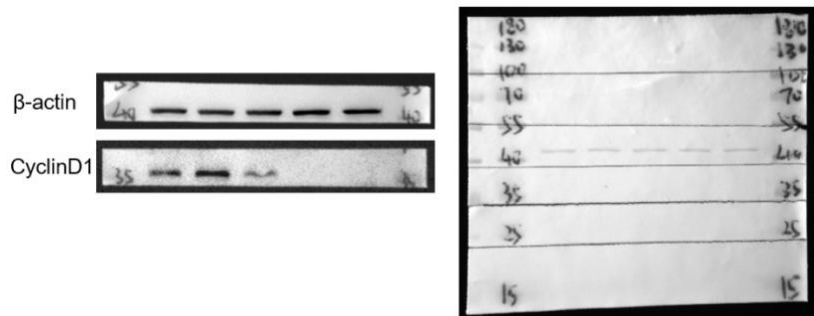
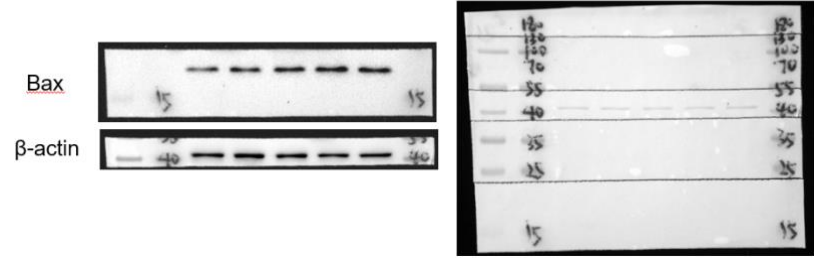
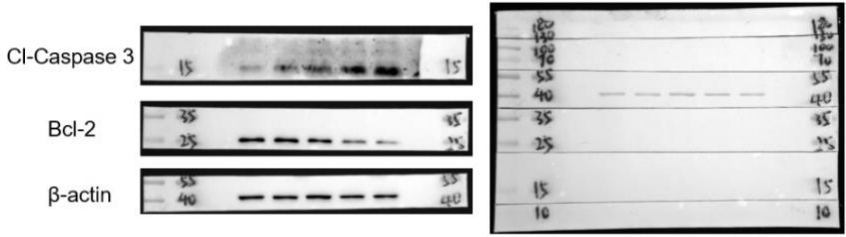
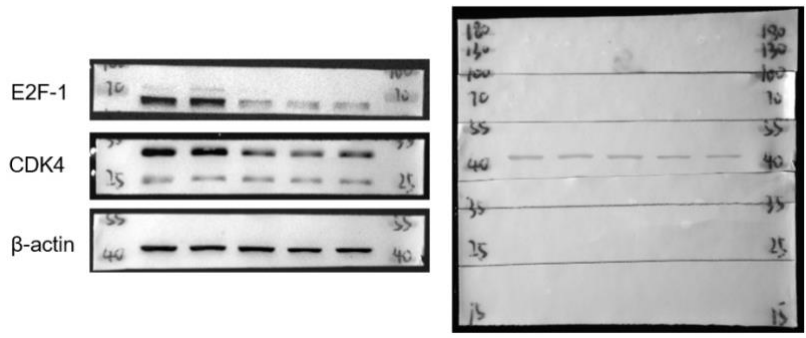
Cl-Caspase 9



β-actin







Unprocessed original membranes of Western blotting are shown in Figures 5, 9, S10, and S12. According to the protein's molecular weight, the blots are cropped from different parts of the same gel explicitly using clear delineation with dividing lines and white space.