

## Supporting Information

### 3D nanostructured Ce-doped CoFe-LDH/NF self-supported catalyst for high-performance OER

Lu Wang<sup>a\*</sup>, Yi Liu<sup>a</sup>, Xiaoheng Liu<sup>b</sup>, Wei Chen<sup>c\*</sup>

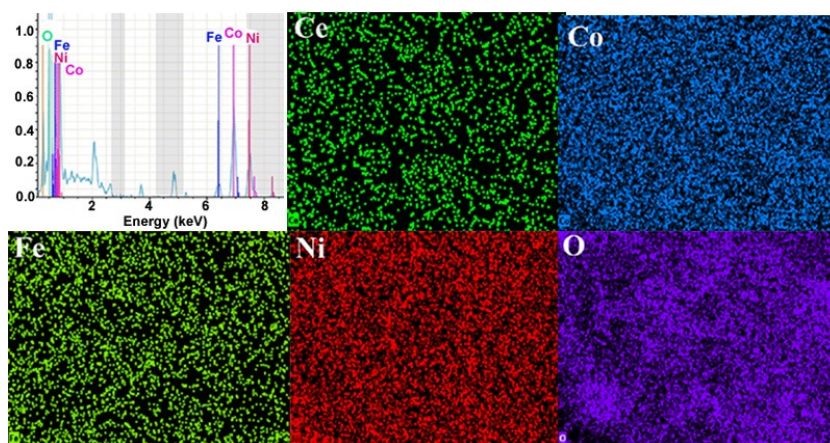
<sup>a</sup> Key Laboratory of Education Ministry Functional for Molecular Solids, College of Chemistry and Materials Science, Anhui Normal University, Wuhu 241000, China

<sup>b</sup> Key Laboratory of Education Ministry for Soft Chemistry and Functional Materials, Nanjing University of Science and Technology, Nanjing 210094, China

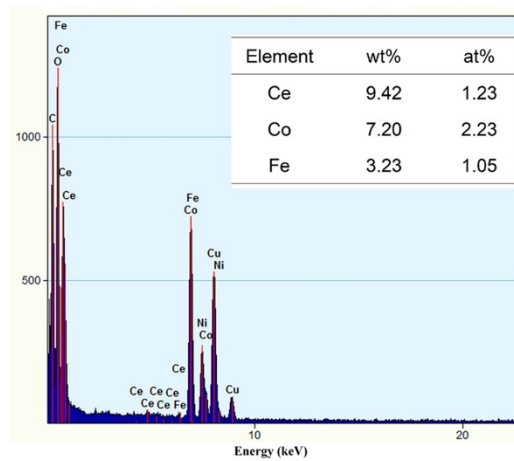
<sup>c</sup> School of Pharmaceutical and Chemical Engineering, Taizhou University, Jiaojiang 318000, Zhejiang Province, China

\* Corresponding authors.

E-mail addresses: wl8909@ahnu.edu.cn (L. Wang); wchen@tzc.edu.cn (W. Chen)



**Figure S1** EDS mapping of Ce-CoFe.



**Figure S2** EDX spectrum of Ce-CoFe.