

Supplemental data

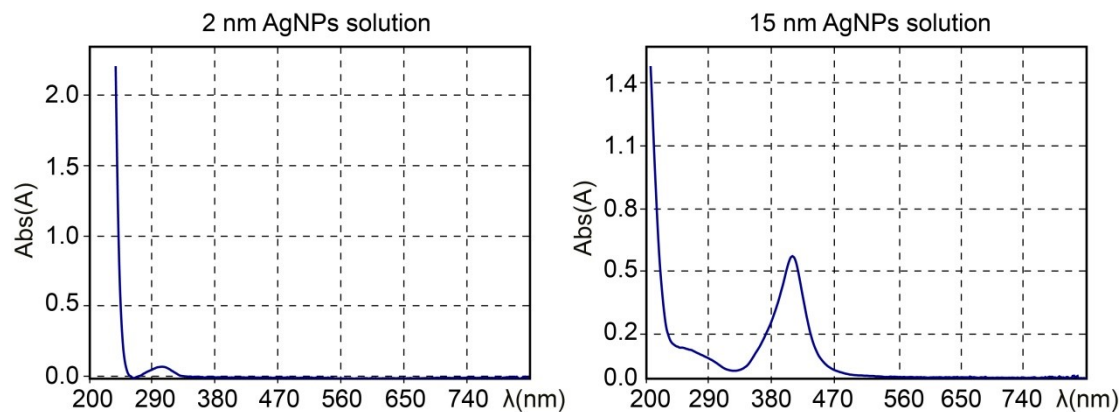


Figure S1. UV-vis absorption spectra of 2 and 15 nm AgNPs used in the study.

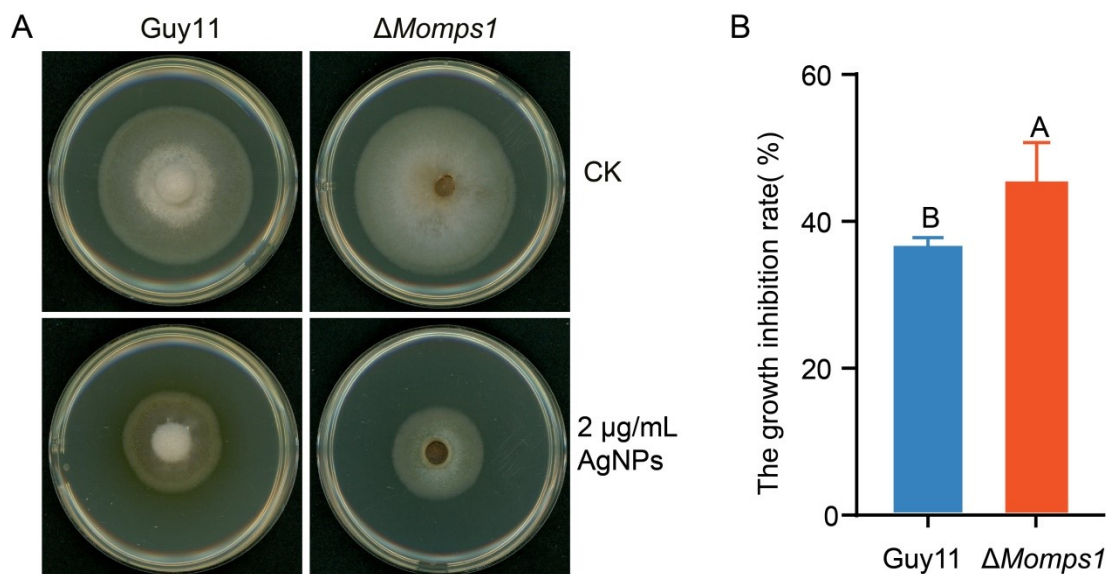
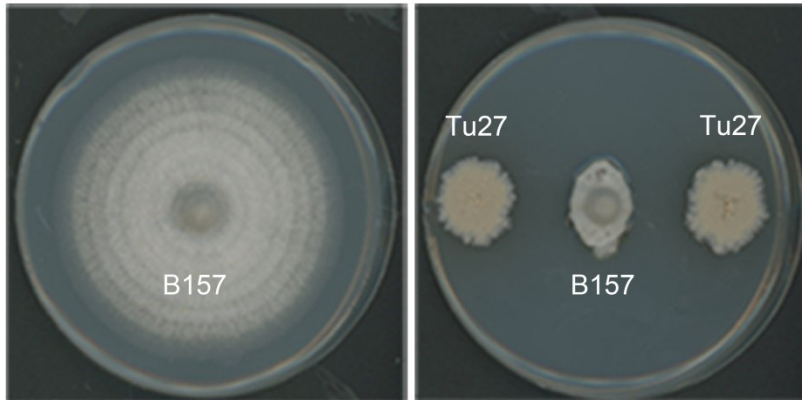


Figure S2. The $\Delta Momp1$ is more sensitive to AgNPs than the WT. A. The colonies of $\Delta Momp1$ and the WT strain Guy11 when grown on CM supplemented with 2 μg/mL AgNPs. Photographs were taken at 6 dpi. B. The relative growth inhibitory rates of the $\Delta Momp1$ and Guy11 strains on CM plates amended with AgNPs.

A



B

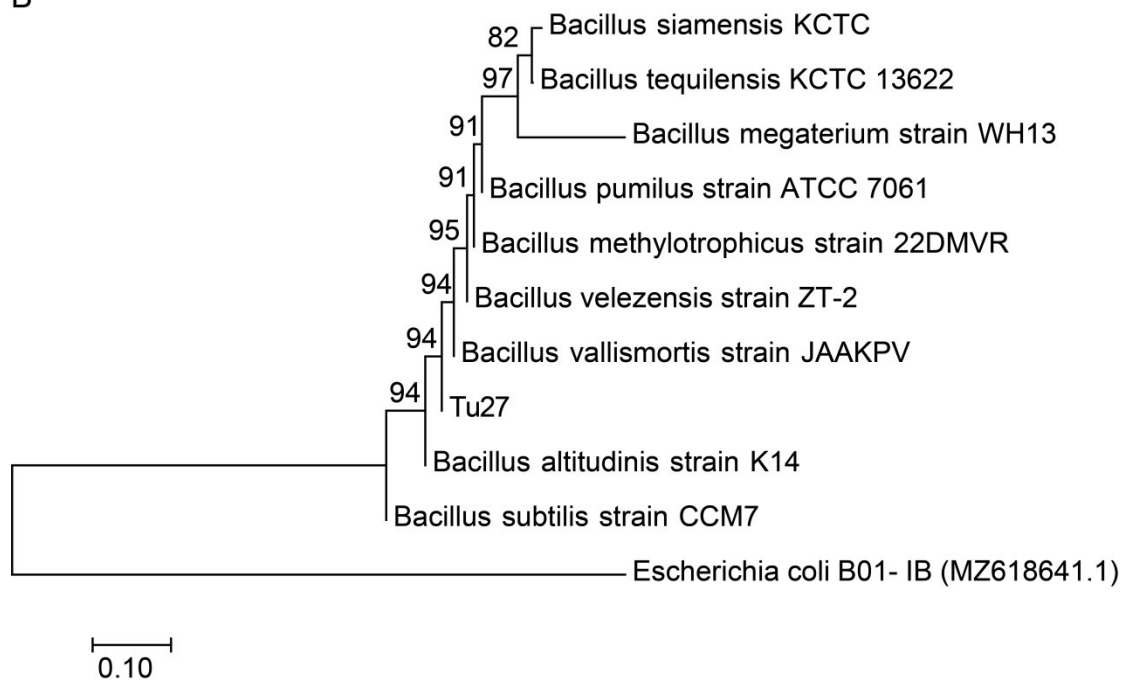


Figure S3. Isolation and characterization of Tu27. A. The strain Tu27 isolated from rice rhizosphere soil had an antagonistic effect on *M. oryzae*. The strain Tu27 was cultured with *M. oryzae* strain B157 in confrontation on CM plate. B. Phylogenetic analysis of Tu27. The phylogenetic tree was constructed using the neighbor-joining method with 16s rRNA gene sequences by the software Mega 7.0 with the bootstrap test of 1000 replicates.

Table S1 Primers used in this study.

Table S2 Sensitivities determination of different *M. oryzae* field isolates strains to AgNPs.