

A. Larval hemolymph protein

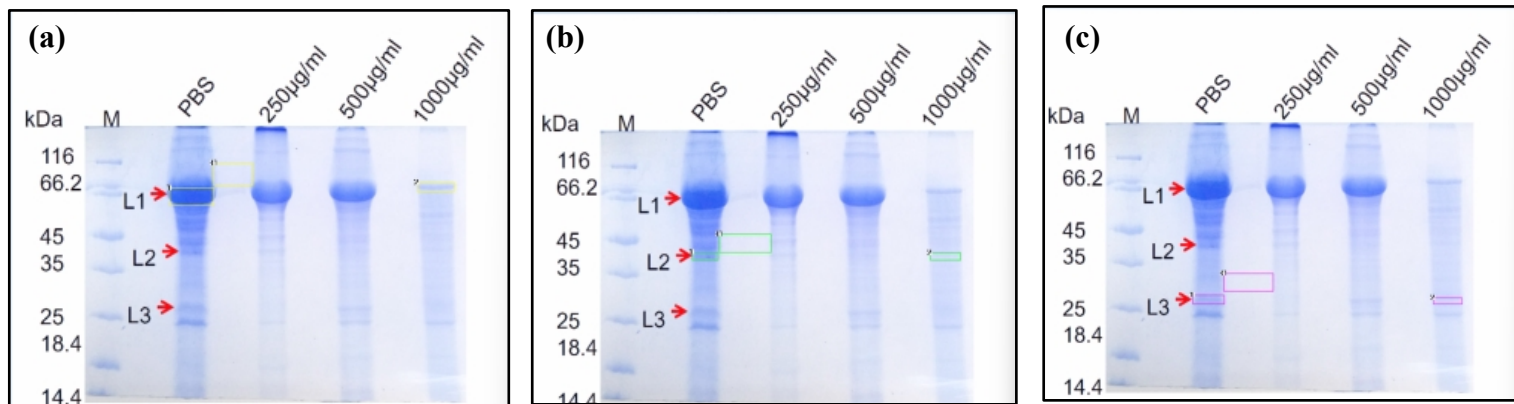


Fig.No.	Sample	IDV	%*
(a)	PBS L1 (1)	963186	94%
(a)	1000 µg/ml (2)	61020	6%
(b)	PBS L2 (1)	170100	83%
(b)	1000 µg/ml (2)	34960	17.3%
(c)	PBS L3(1)	180873	82%
(c)	1000 µg/ml (2)	38220	17.4%

B. Egg protein

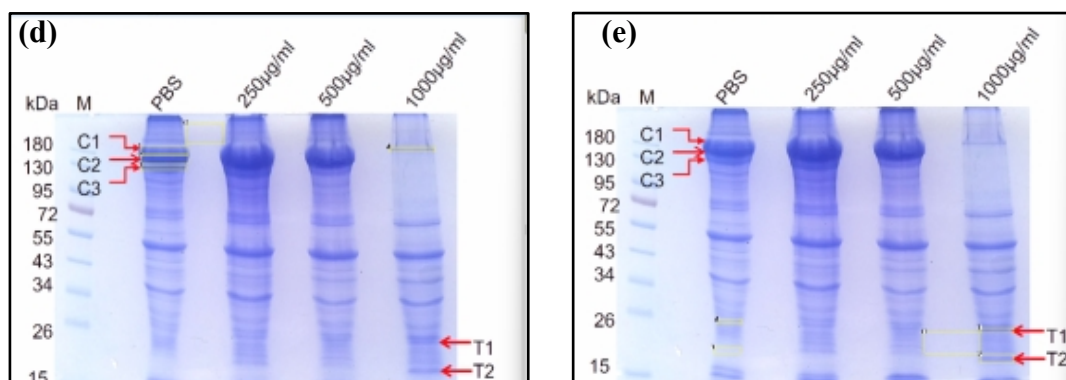


Fig.No.	Sample	IDV	%*
(d)	PBS C1(1)	460085	30.2%
(d)	PBS C2 (2)	605375	39.8%
(d)	PBS C3(3)	320226	21%
(d)	1000 µg/ml	135945	9.9%
(e)	1000 µg/ml T1(1)	96600	26.3%
(e)	1000 µg/ml T2 (2)	213960	58.3%
(e)	PBS (3)	27930	7.6%

C. Pupal hemolymph protein

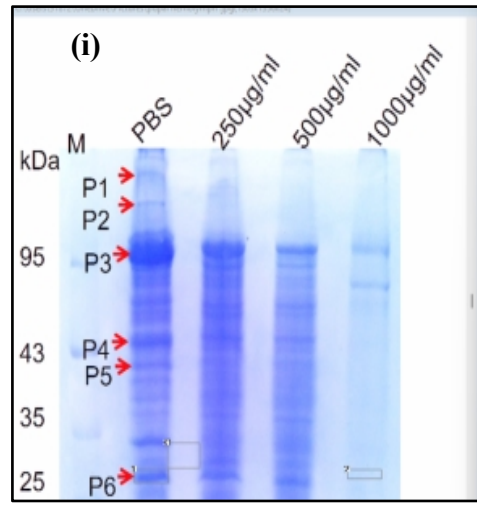
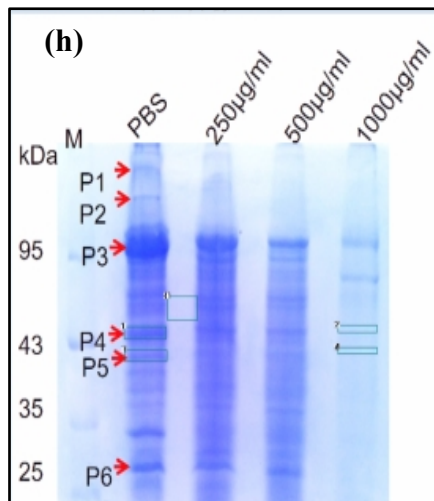
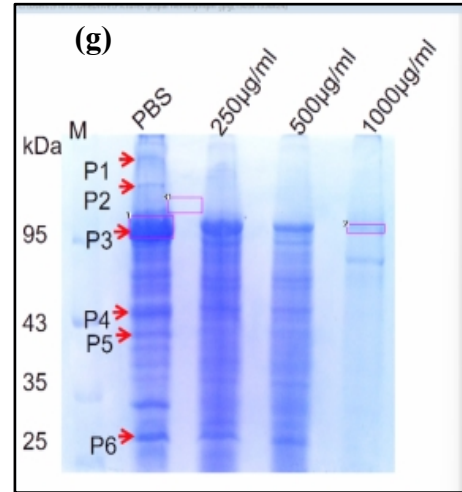
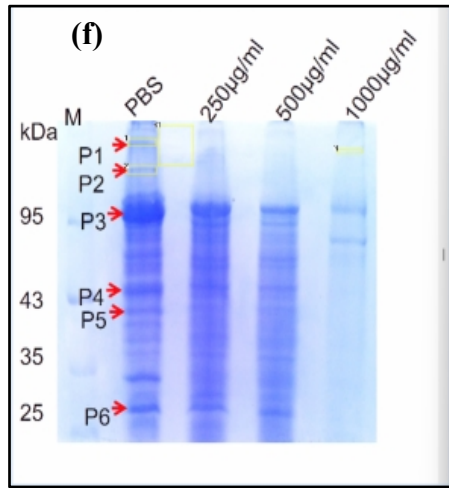


Fig.No.	Sample	IDV	%*
(f)	PBS P1 (1)	152076	47.2%
(f)	PBS P2 (2)	163254	50.7%
(f)	1000 µg/ml(3)	6930	2.2%
(g)	PBS P3 (1)	1030839	91.6%
(g)	1000 µg/ml (2)	94350	8.4%
(h)	PBS P4 (1)	328779	51.9%
(h)	1000 µg/ml	31395	5%
(h)	PBS P5 (3)	255471	40.4%
(h)	1000 µg/ml	17480	2.8%
(i)	PBS P6(1)	190120	88.7%
(i)	1000 µg/ml	24250	11.3%

IDV: Integrated Density Value

*Based on Integrated Density Value