

Supplementary Information

Pickering emulsions stabilized by *Chlorella pyrenoidosa* protein-chitosan complex for lutein encapsulation

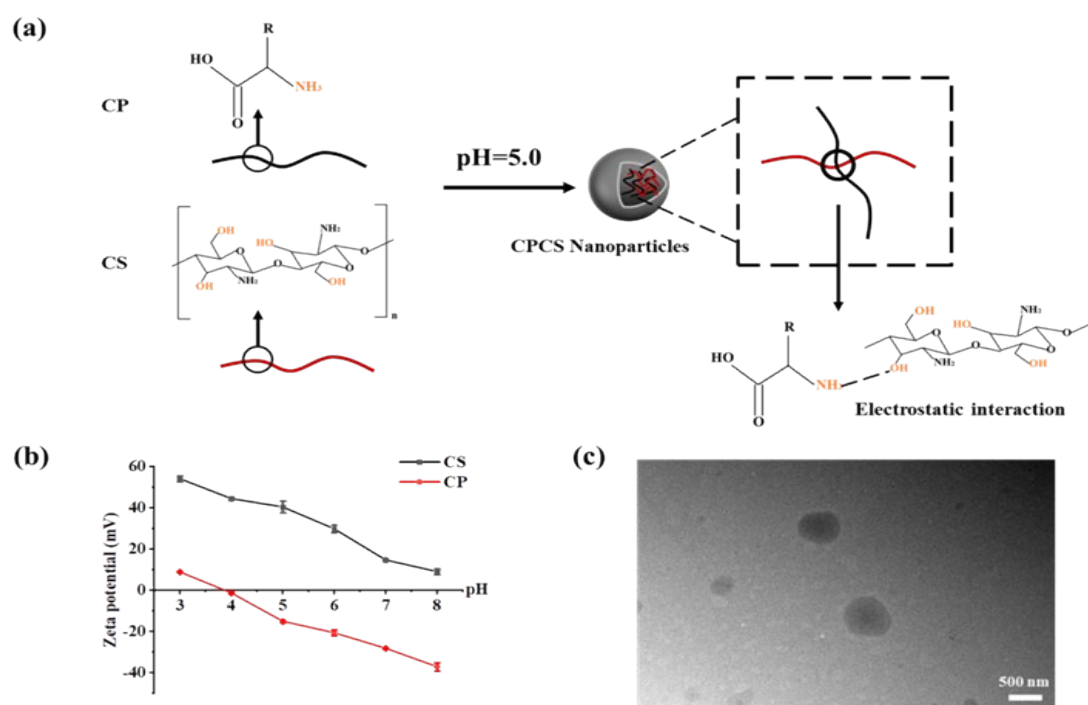


Fig. S1 The formation schematic diagram of CPCS nanoparticles at pH=5 (a). Effect of pH Value on the Zeta potential of CP and CS solutions (b). The TEM image of CP-CS complex with a mass ratio of 10:4.

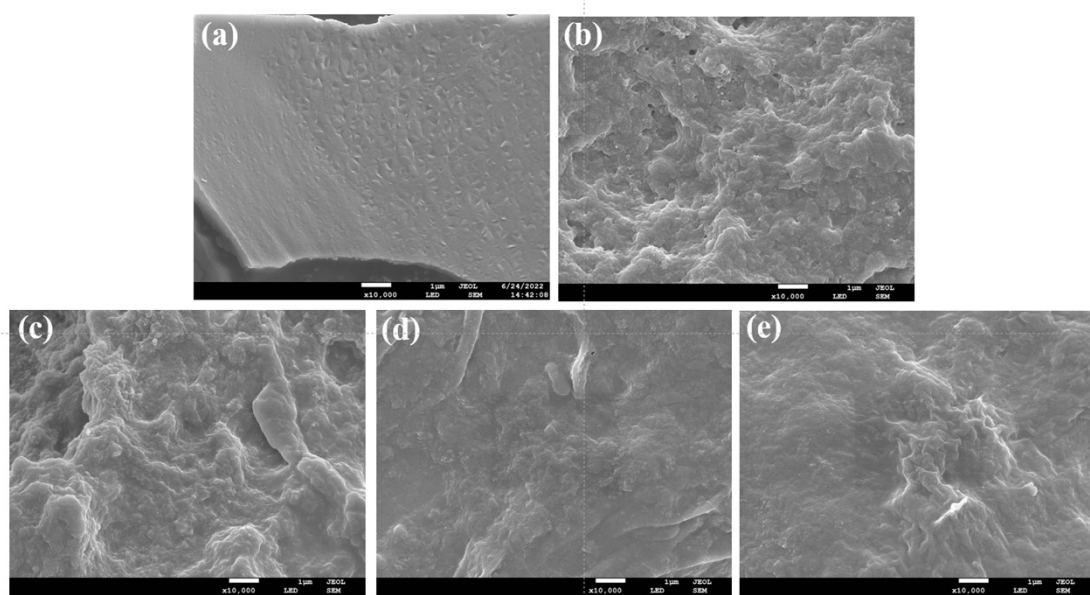


Fig. S2 SEM images of CP-CS complex with CP:CS mass ratio at 1:0 (a), 10:1 (b), 10:2 (c), 10:3 (d) and 10:4 (e), respectively.

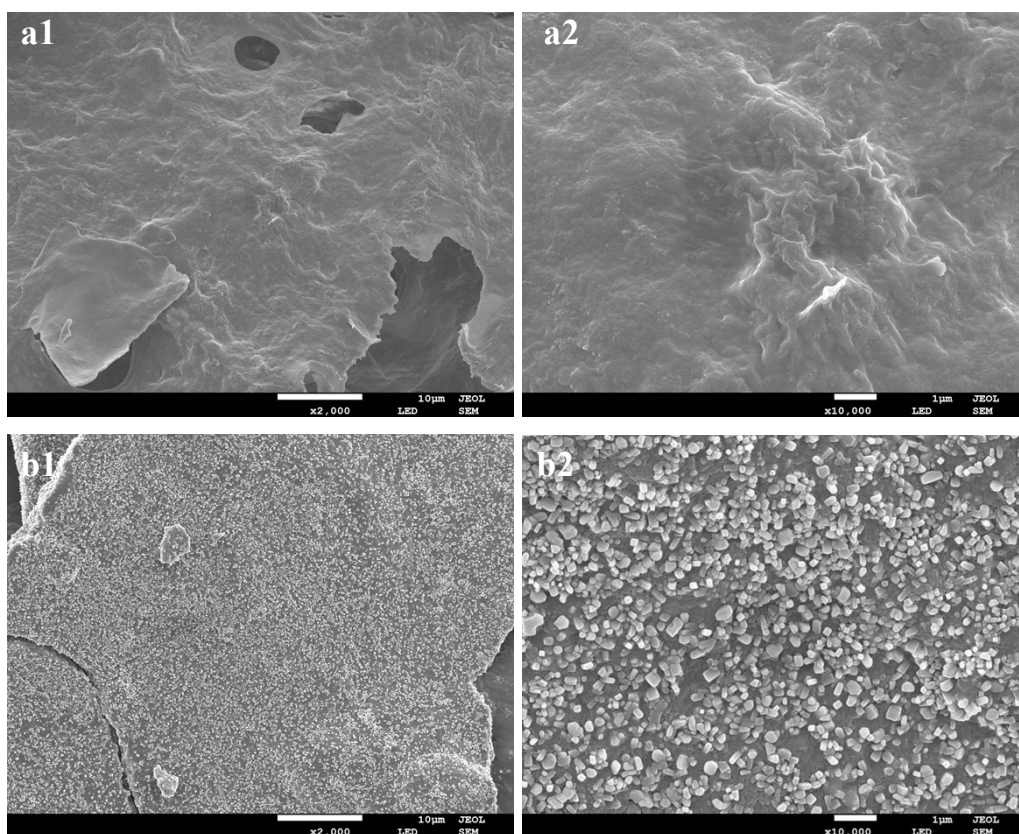


Fig. S3 SEM images with (a1) 2,000, (a2) 10,000 times magnification of CP-CS complex with CP:CS mass ratio at 10:4 in the absence of sodium chloride. SEM images with (b1) 2,000, (b2) 10,000 times magnification of CP-CS complex with CP:CS mass ratio at 10:4 in the presence of 400 mM sodium chloride.