

Supporting information

In vitro simulated digestion and fecal fermentation of exopolysaccharide from
Lactocaseibacillus paracasei GL1

Xiaomeng Wang^a, Juanjuan Tian^a, Nanyu Tang^a, Xueliang Zhang^a, Luyao Xiao^a, Mengjia Xu^{a,b},
Mingsheng Dong^a, Wei Li^{a,*}

^aCollege of Food Science and Technology, Nanjing Agricultural University, Nanjing, Jiangsu
210095, P.R. China.

^bAffiliated Cixi Hospital, Wenzhou Medical University, Cixi 315300, Zhejiang, P.R. China

***Corresponding author:**

Dr Wei Li*

College of Food Science and Technology

Nanjing Agricultural University

1 Weigang Road, Nanjing, Jiangsu, P.R. China

Tel: +86 25 84399910

E-mail address: lw1981@njau.edu.cn

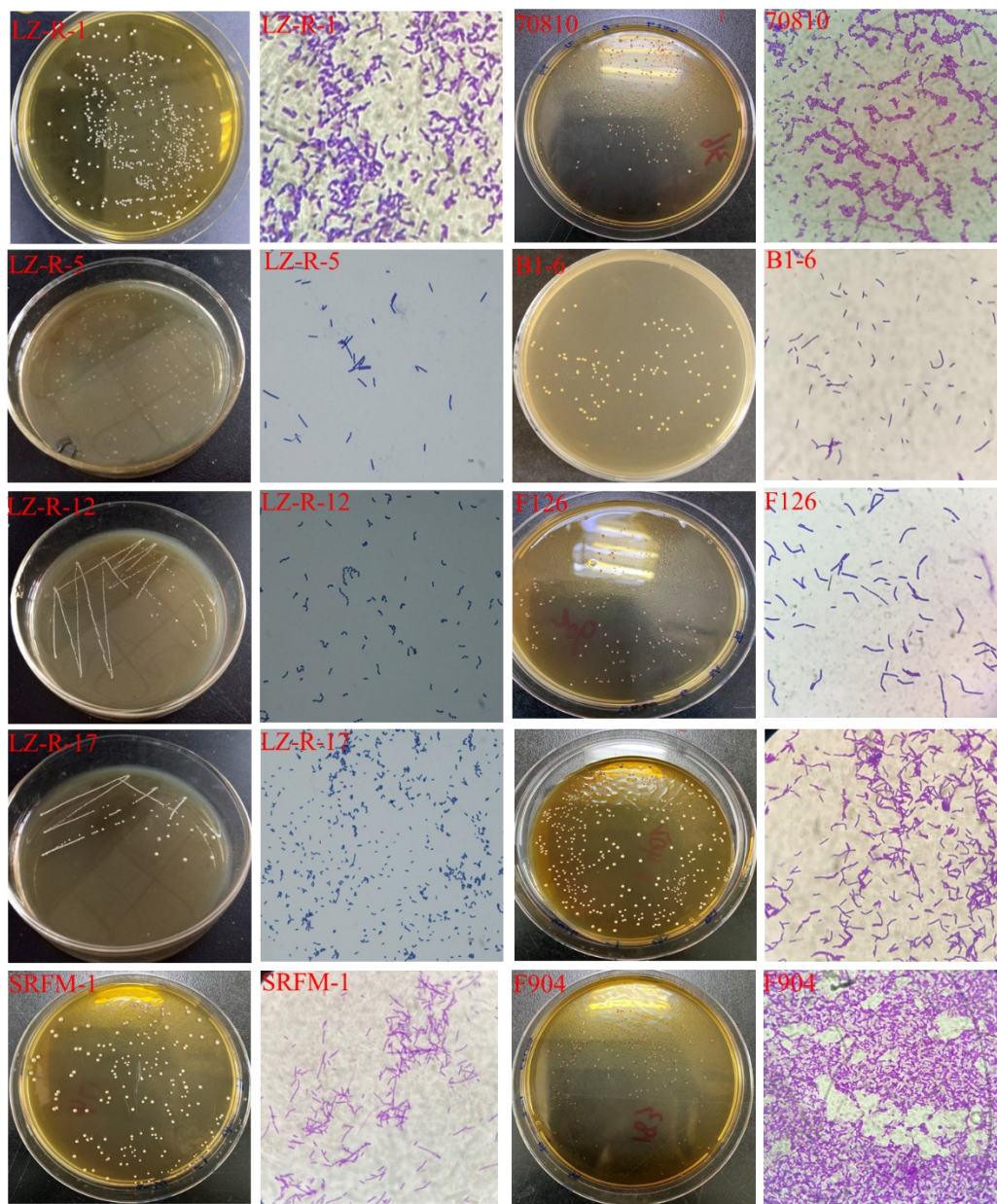


Fig. S1 The colony morphology and microscope observation of ten LAB.

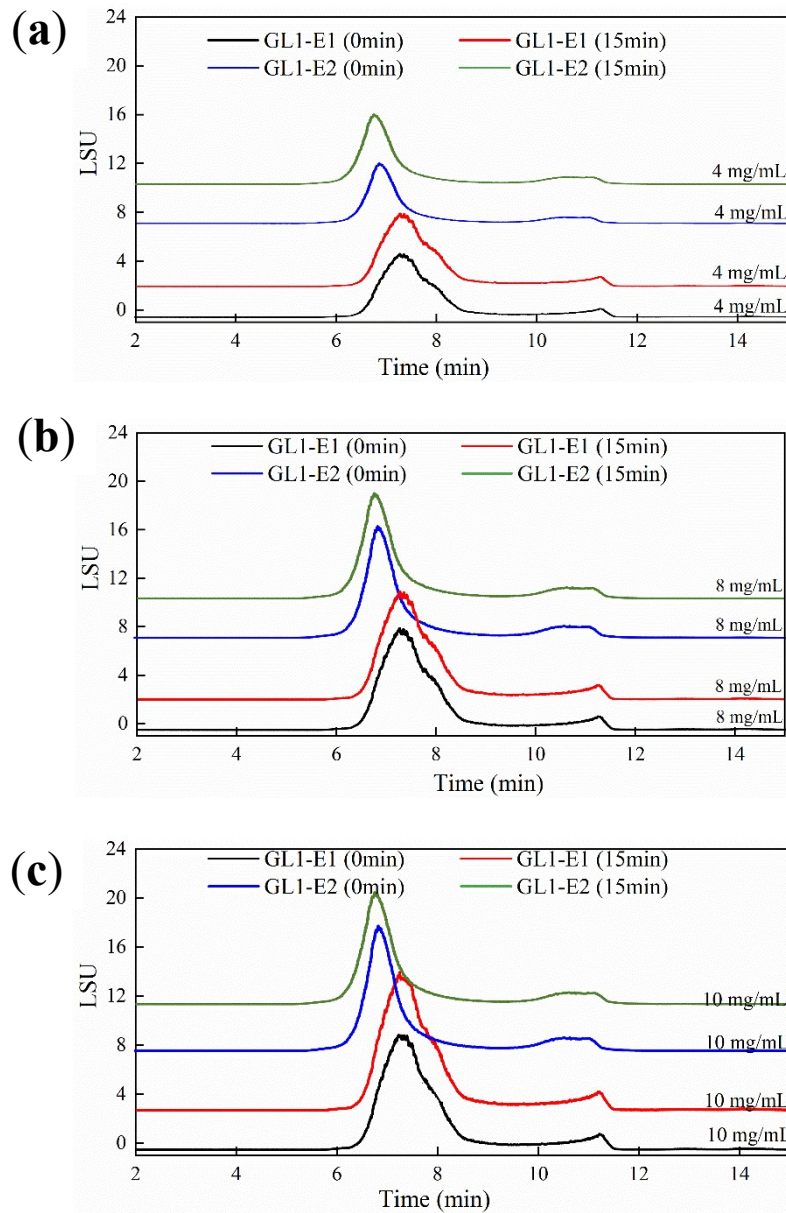


Fig. S2 Mw changes of 4 mg/mL (a), 8 mg/mL (b), and 10 mg/mL (c) concentrations of GL1-E1 and GL1-E2 before and after saliva digestion.