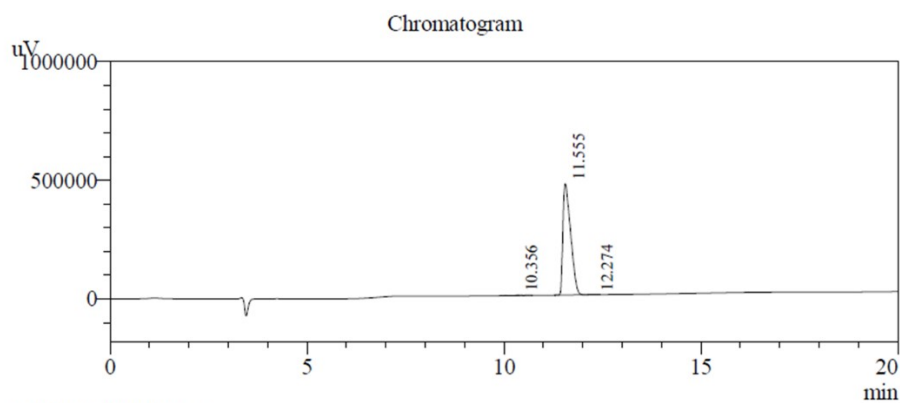


1

2

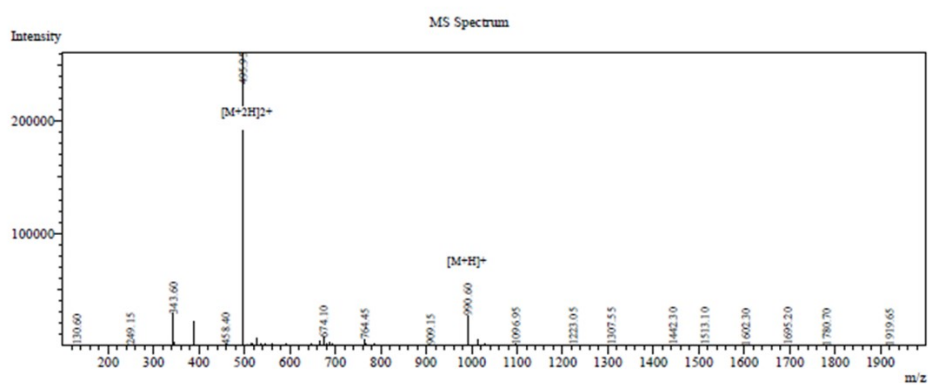


1 Det.A Ch1 / 214nm

PeakTable

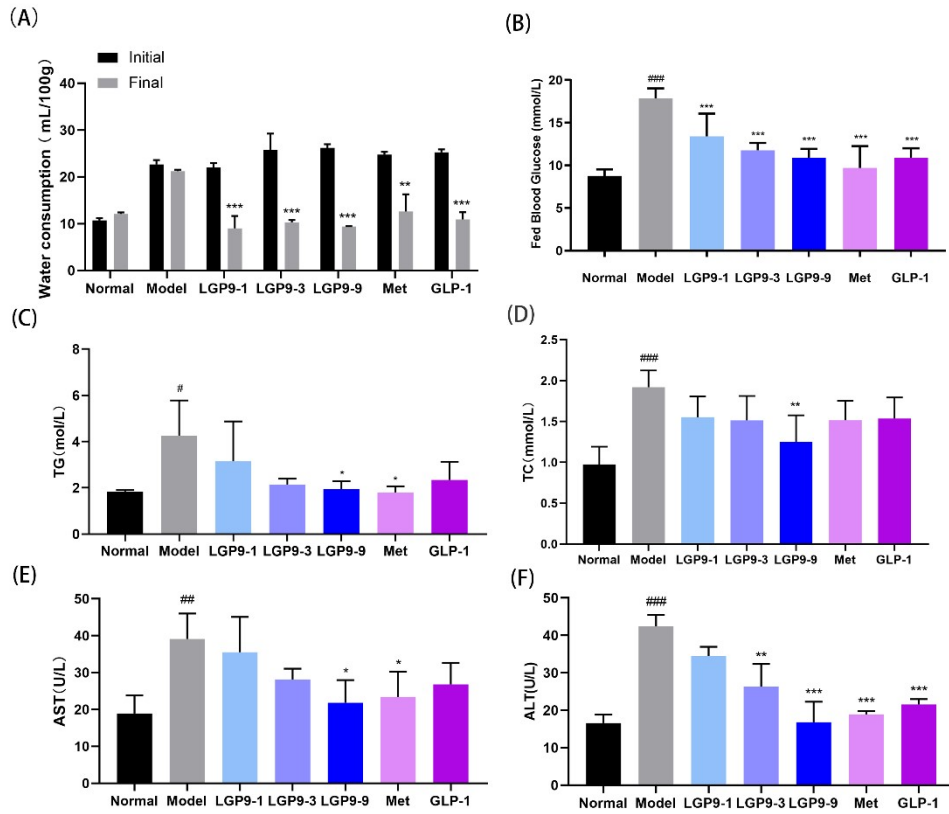
Detector A Ch1 214nm

Peak#	Ret. Time	Area	Height	Area %	Height %
1	10.356	23383	1921	0.363	0.406
2	11.555	6403489	470935	99.514	99.436
3	12.274	7884	750	0.123	0.158
Total		6434756	473606	100.000	100.000

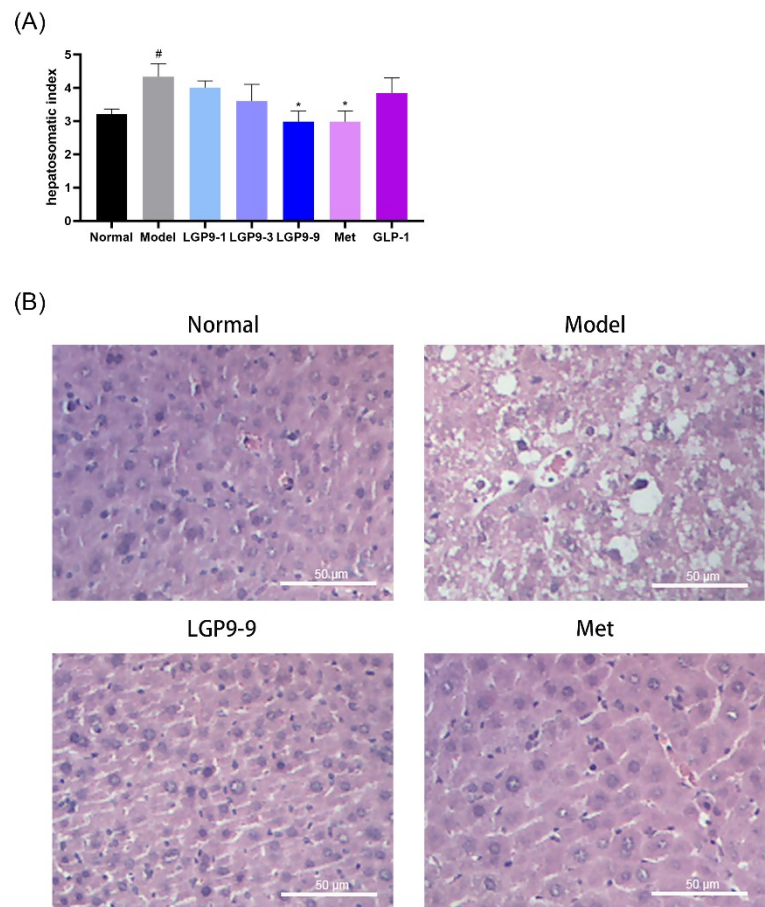


3

4 **Supplementary Fig. 1.** HPLC analysis and MS spectrum of LGP9.



5
6 **Supplementary Fig. 2.** The effects of LGP9 on water consumption and serum lipid levels in HFD-
7 STZ-induced T2D mice. Water consumption (A) was measured on the first and final day before
8 sacrifice. Fed blood glucose (B) was measured before sacrifice. Serum TG level (C), serum TC level
9 (D), serum AST level (E), and serum ALT level (F) were measured after sacrifice. Values are mean
10 \pm s.d. (n=6-8), #p<0.05, ##p<0.01, ###p<0.001 vs. the normal group. *p<0.05, **p<0.01, ***p<0.001
11 vs. the model group.
12



13

14 **Supplementary Fig. 3.** The effect of LGP9 on the liver of HFD-STZ-induced T2D mice. Liver
 15 index (A) was measured after sacrifice. (B) H&E staining of the pancreas sections (400×). Values
 16 are mean ± s.d. (n=6-8), [#]p<0.05vs. the normal group. ^{*}p<0.05 vs. the model group.

17