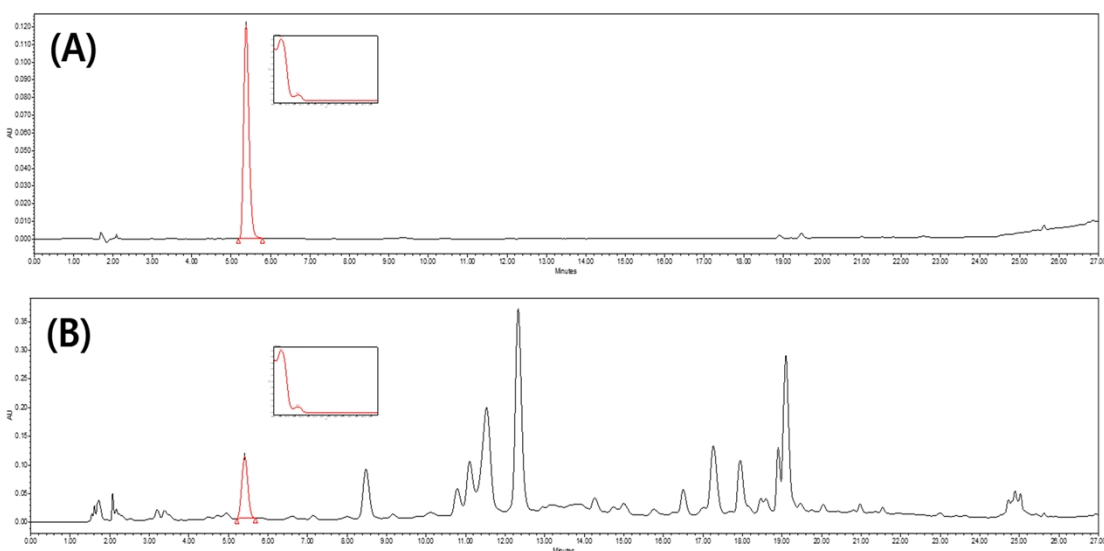


**Figure S1.** The high-performance liquid chromatography chromatogram of gallicocatechin (A) and *Hippophae rhamnoides* leaf extracts (B)



**Table of supplementary.**

Table S1. Analytical results of linearity limit of detection and limit of quantification

| Analyte         | Regression equation              | Correlation coefficient (R <sup>2</sup> ) | Linear range (µg/µl) | LOD <sup>a</sup> (µg) | LOQ <sup>b</sup> (µg) |
|-----------------|----------------------------------|---|----------------------|-----------------------|-----------------------|
| Gallicocatechin | $y = 463989.24158x - 5369.44444$ | 0.9998                                    | 0.03125 – 0.5        | 0.02265               | 0.06865               |

LOD<sup>a</sup> : limit of detection  
LOQ<sup>b</sup> : limit of quantification

Table S2. Analytical results of intra-day and inter-day tests

| Analyte         | Concentration (µg/µL) | Intra-day    |         |              | Inter-day    |         |              |
|-----------------|-----------------------|--------------|---------|--------------|--------------|---------|--------------|
|                 |                       | Mean (µg/µL) | RSD (%) | Accuracy (%) | Mean (µg/µL) | RSD (%) | Accuracy (%) |
| Gallicocatechin | 0.0625                | 0.32         | 1.05    | 98.34        | 0.32         | 0.92    | 99.11        |
|                 | 0.125                 | 0.62         | 1.44    | 100.39       | 0.62         | 1.30    | 100.28       |
|                 | 0.25                  | 1.23         | 0.08    | 101.64       | 1.22         | 0.71    | 102.08       |

RSD: Relative standard deviation