

Supplementary data

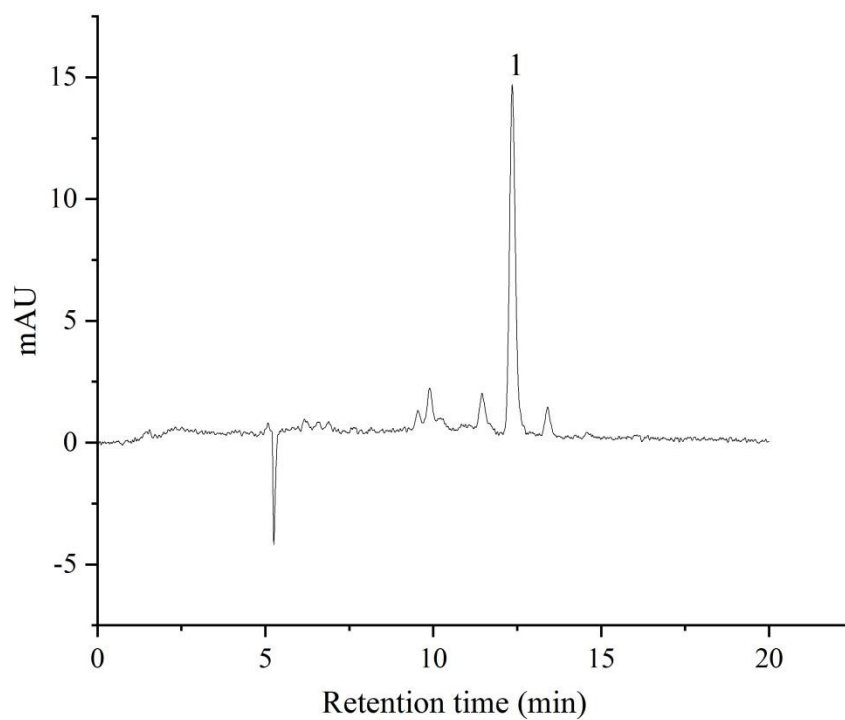


Fig S1. The HPLC chromatogram of lutein extraction from the liver. 1, lutein.

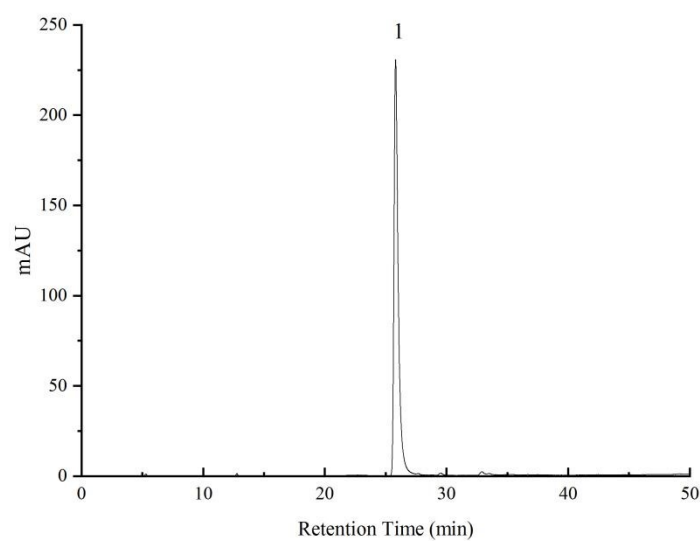


Fig S2. The HPLC chromatogram of epigallocatechin-3-gallate. 1, epigallocatechin-3-gallate.

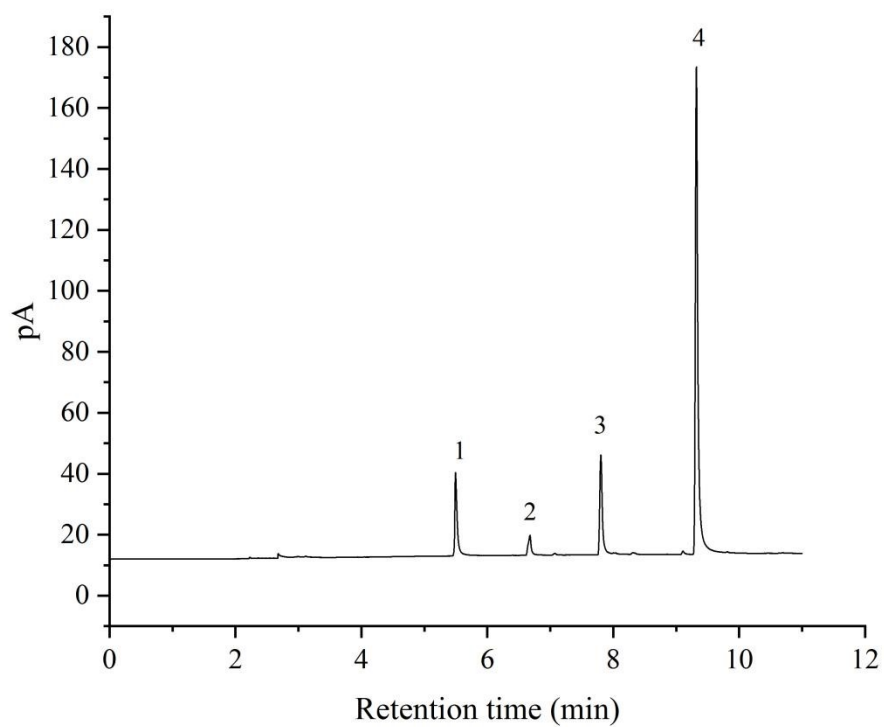


Fig S3. GC chromatography of SCFAs from mice cecal contents. 1, acetic acid; 2, propionic acid; 3, n-Butyric acid; 4, 2-ethylbutyric acid, internal standard.