

Fig. S1. The levels of fasting blood glucose and serum insulin, related to Fig. 2. (A) Fasting glucose level; (B) Serum insulin level. Data were presented as mean \pm SEM, *** p <0.001 versus the ND group, ## p <0.01 versus the High soybean TAG oil group.

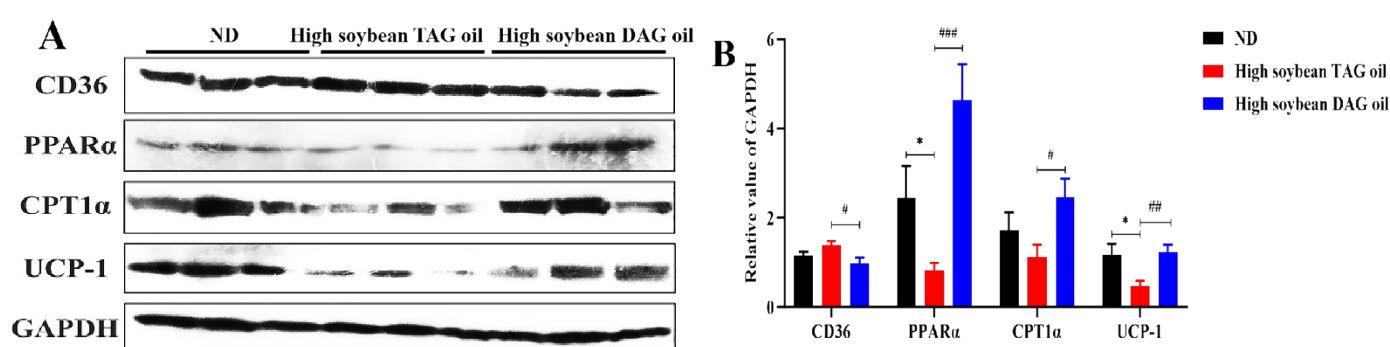
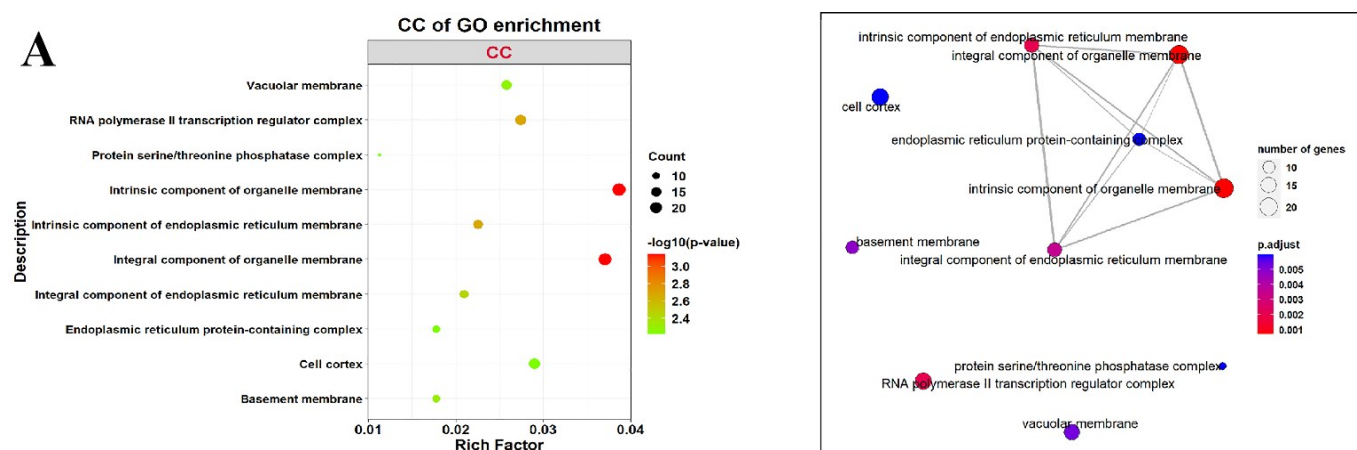


Fig. S2. The expression levels of hepatic proteins involving in lipid transport and fatty acid oxidation, related to Fig. 2. (A) Western blot ($n=3$) and (B) quantification ($n=6$) of total protein levels of CD36, PPAR α , CPT1 α and UCP-1 in mouse liver. Data were presented as mean \pm SEM, * p <0.05 versus the ND group, # p <0.05, ## p <0.01 and ### p <0.001 versus the High soybean TAG oil group.



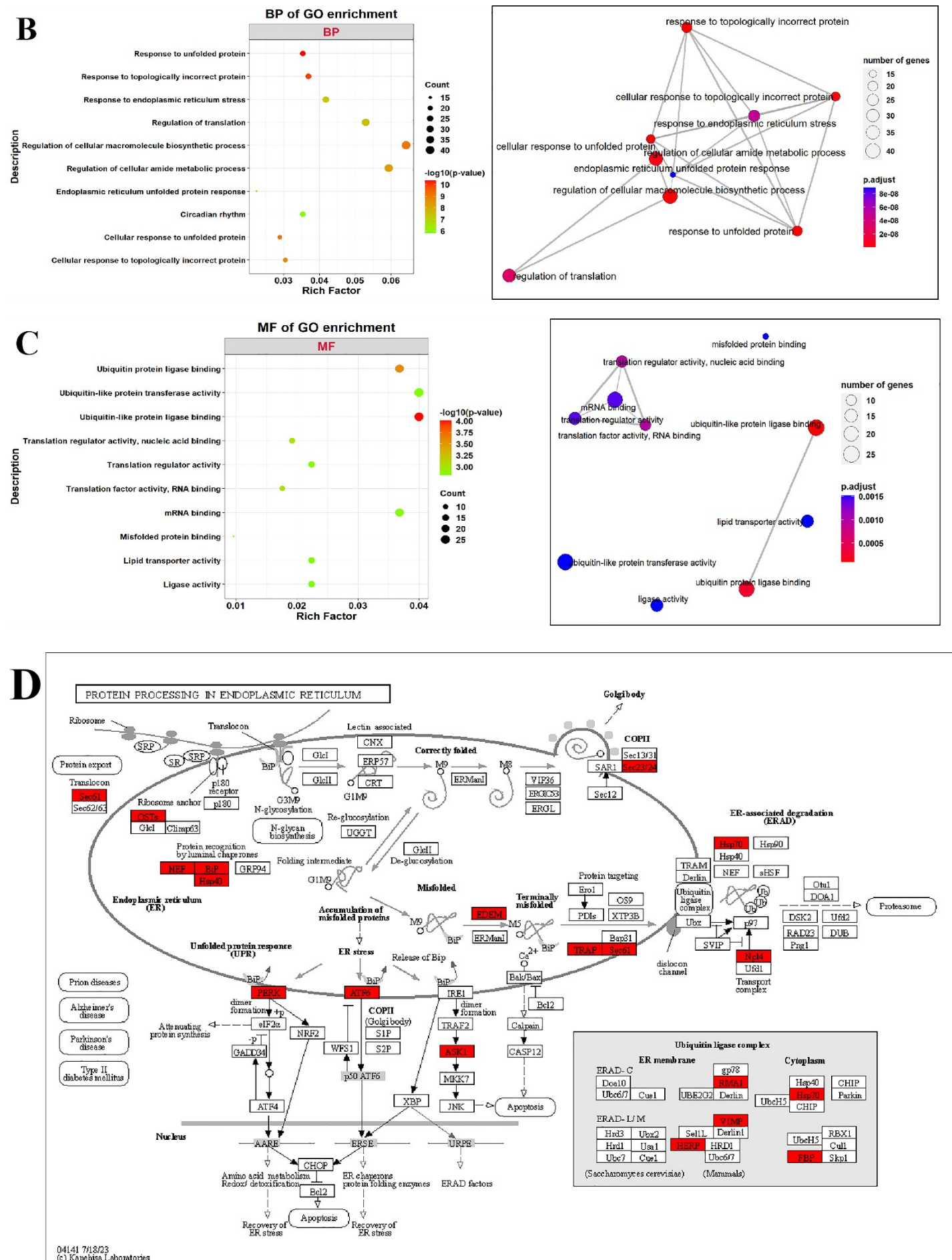


Fig. S3. The classification of GO enrichment, related to Figure 4. (A) The CC of GO enrichment; (B) The BP of GO enrichment; (C) The MF of GO enrichment; (D) The pathway of protein process in ER (Red represent a significant increase in High soybean DAG oil group vs High soybean TAG oil group). Data was presented in High soybean DAG oil group vs High soybean TAG oil group.