

1 Supporting Information

2 Structure and potential allergenicity of peanut allergen monomers

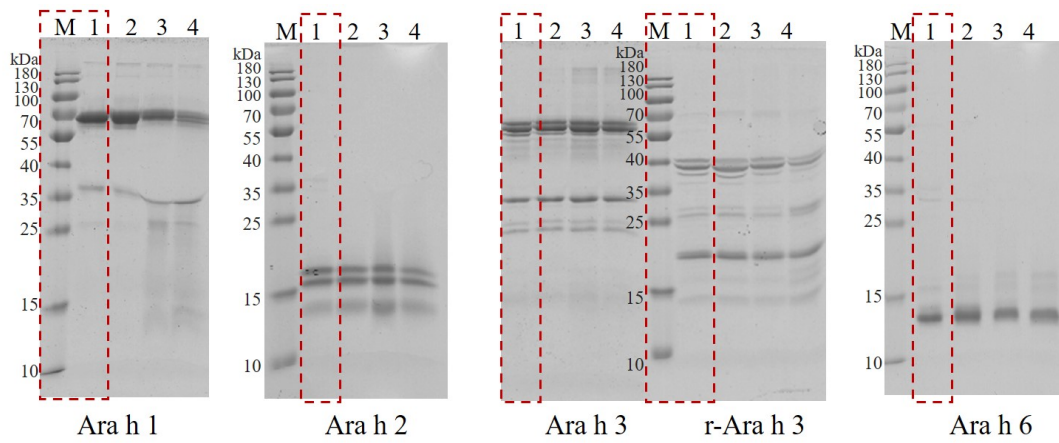
3 after roasting

4 Table S1 Information of peanut allergic patients.

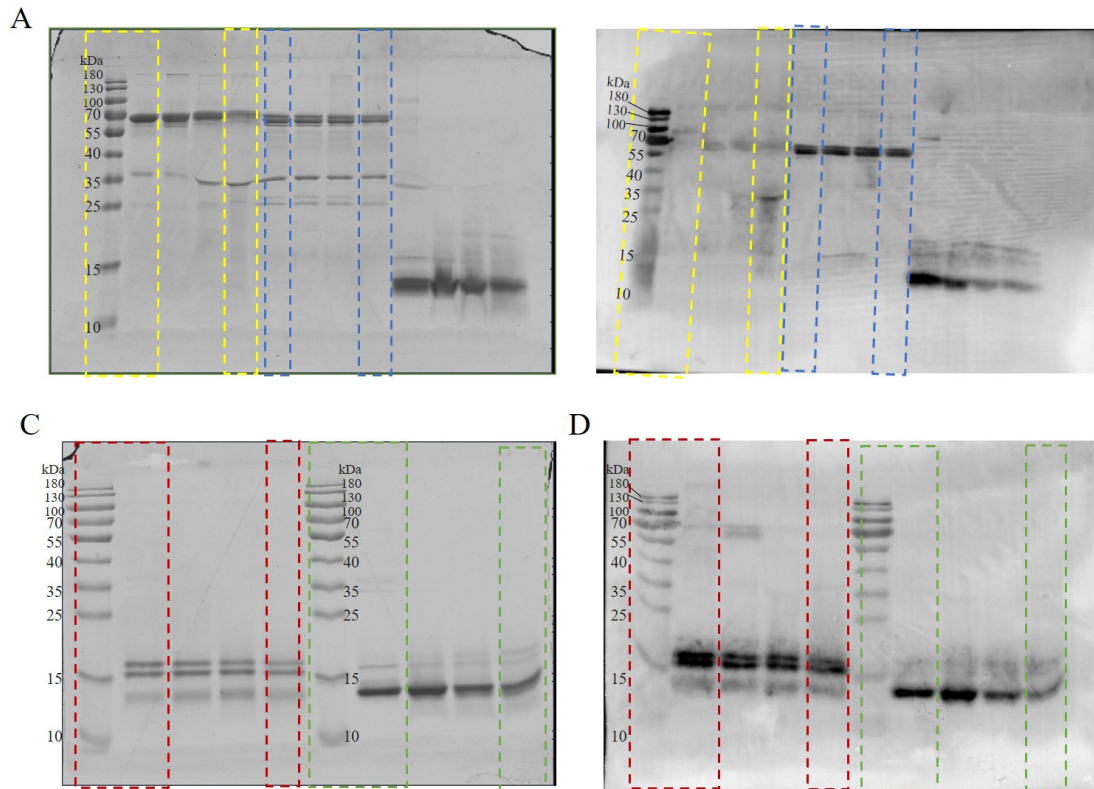
Number	Gender	Age	Clinical symptoms	Total IgE level (IU/mL)	Specific IgE level to peanut (IU/mL)
1	Male	21	Elevated IgE	238	20.6
2	Male	23	Allergic rhinitis	ND*	>=100
3	Male	19	Allergic rhinitis	95.605	42.299
4	Female	21	Allergic rhinitis	233	55.6
5	Male	23	Allergic rhinitis, multiple allergies	9082.5	46.3
6	Female	49	Allergic rhinitis, asthma, celiac disease, multiple allergies	370	77.4
7	Male	15	Allergic rhinitis, multiple allergies	ND*	24.3
8	Male	21	Allergic rhinitis, food allergy	977.378	>=100
9	Male	26	Allergic rhinitis	ND*	>=100
10	Female	23	Allergic rhinitis, multiple allergies	852	43.3
11	Male	22	Allergic rhinitis, asthma, multiple allergies	3532	47.9

5 *ND, not detected

6



7
 8 **Figure S1** Raw images of SDS-PAGE of separated major allergens from raw (lane1)
 9 and roasted (lane 2, 3,4) peanut. Lanes in Figure 1 were marked in red boxes.
 10



11

12 **Figure S2** Raw images of SDS-PAGE (A, C) and Western blotting (B, D) analysis of
 13 allergens in raw and roasted peanut. Lanes in yellow boxes represented the SDS-PAGE
 14 and Western blotting of Ara h 1 in Figure 4 A; Lanes in red boxes represented the SDS-
 15 PAGE and Western blotting of Ara h 2 in Figure 4 B; Lanes in blue boxes represented
 16 the SDS-PAGE and Western blotting of Ara h 3 in Figure 4 C; Lanes in green boxes
 17 represented the SDS-PAGE and Western blotting of Ara h 6 in Figure 4 D.