

### Electronic Supplementary Information

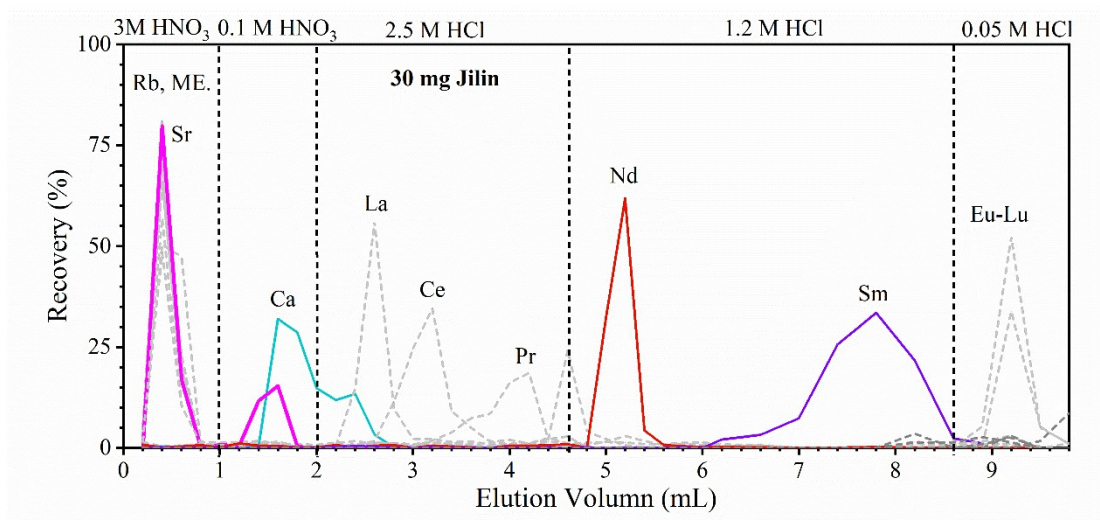


Fig. S1 Elution profiles of Sr, Nd, and Sm purification on 0.25 mL TODGA resin, tested with 30 mg Jilin. Due to sample overloading, Sr is eluted along with the major elements. "ME." refers to the matrix elements (such as Na, Mg, Al, K, Ti, Fe, Mn, and Ba).

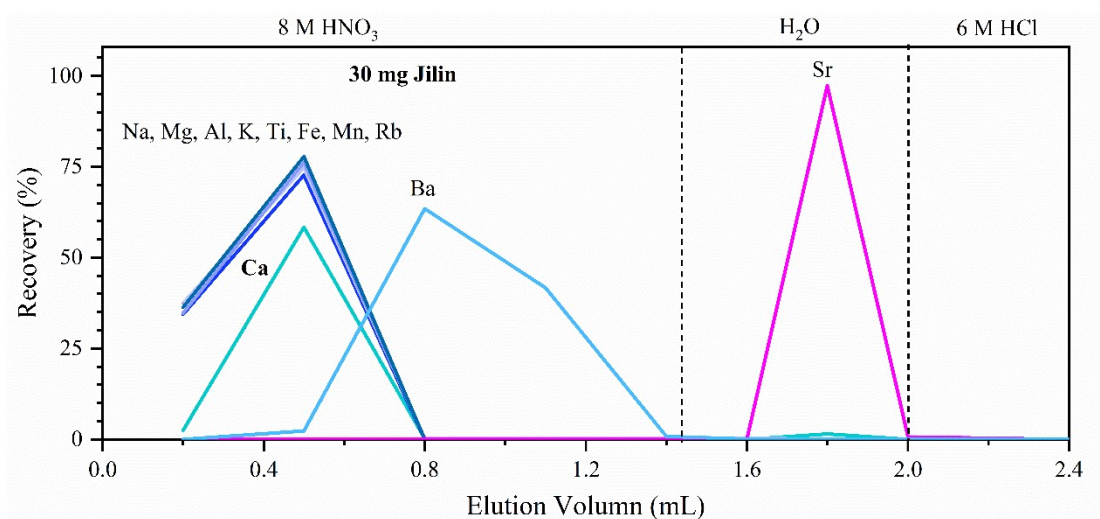


Fig. S2 The elution profile of the second column with 0.14 mL Sr-Spec resin. The Sr-containing fraction (in 3 M and 4 M HNO<sub>3</sub>) in Fig. 2 is loaded on Sr-Spec column to completely separate Sr.