

Supporting Information

Under-oil open microfluidic systems for rapid phenotypic antimicrobial susceptibility testing

Chao Li, Sue McCrone, Jay W. Warrick, David R. Andes, Zachary Hite, Cecilia F. Volk, Warren E. Rose and David J. Beebe

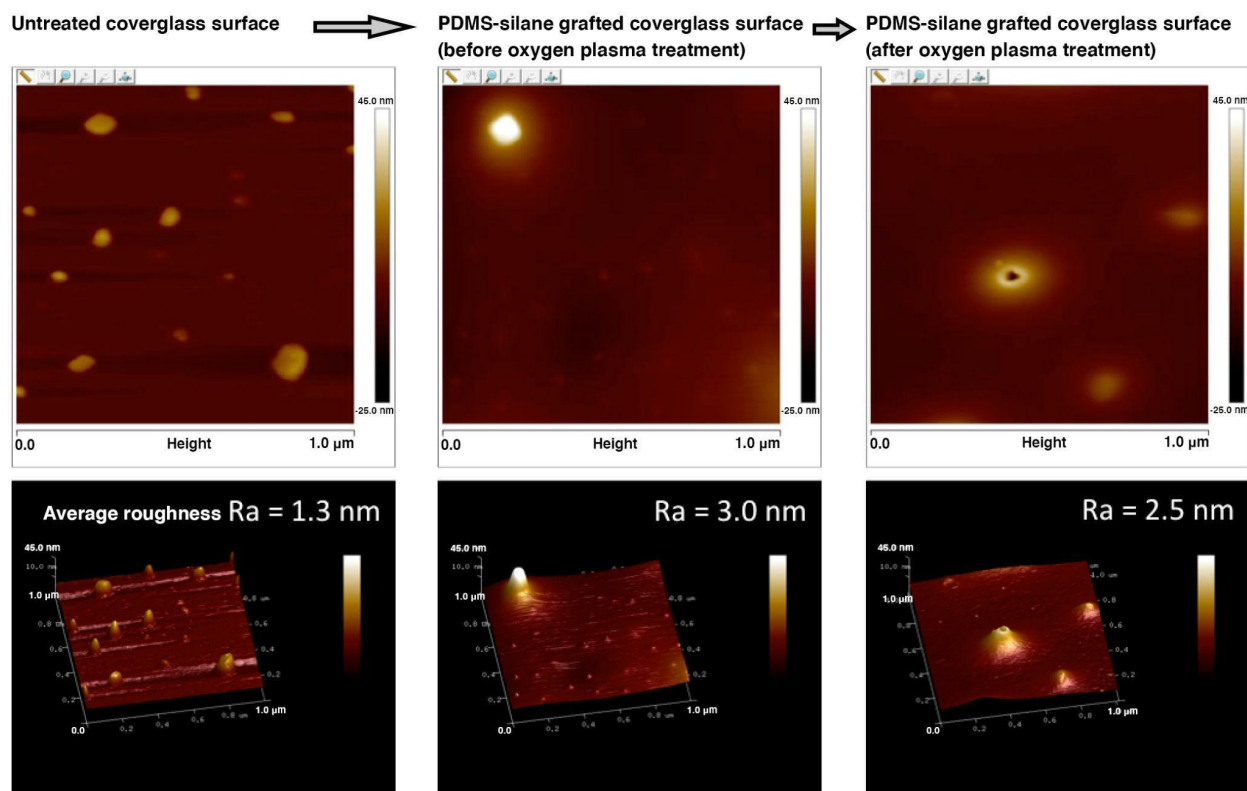
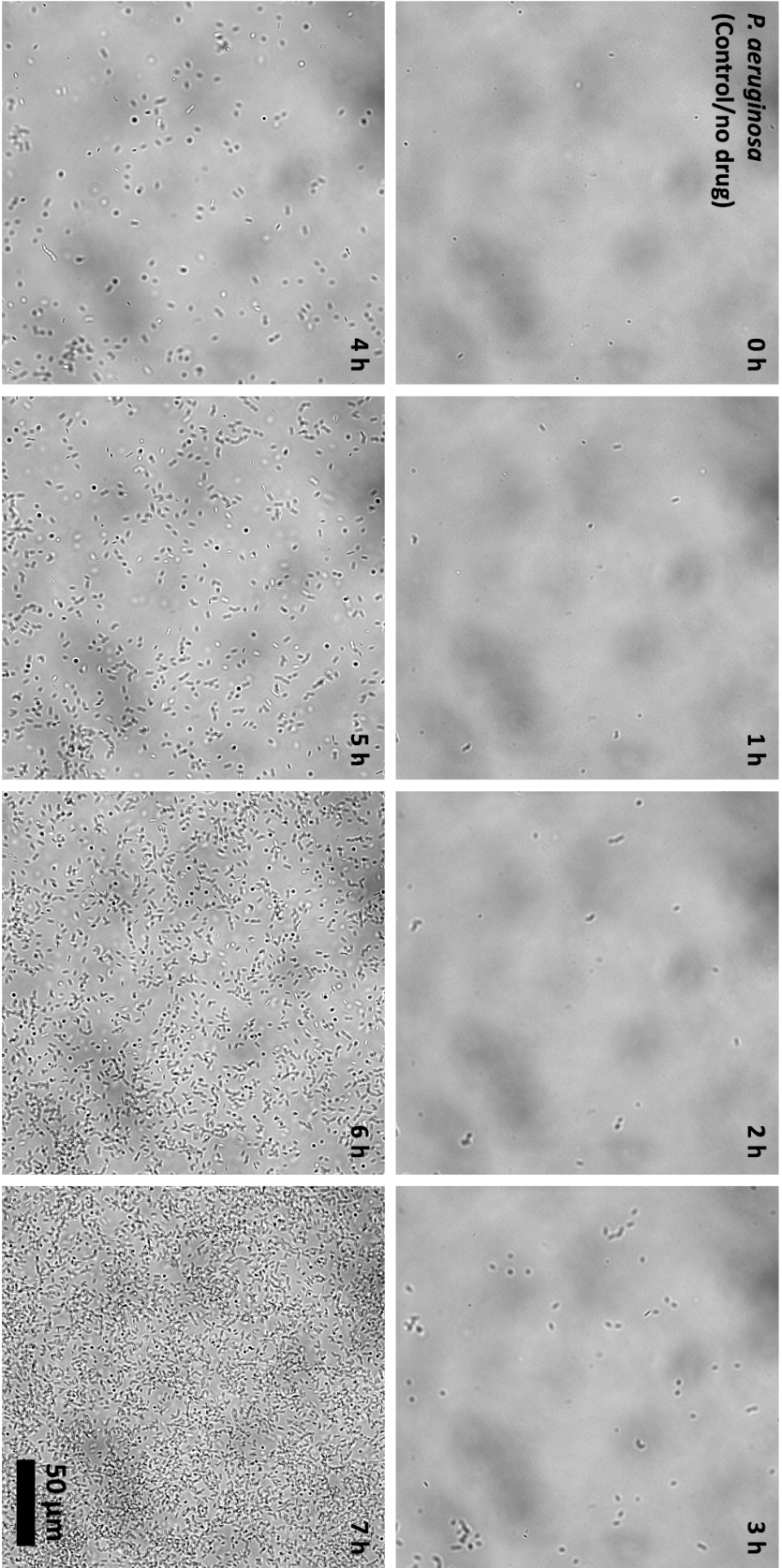
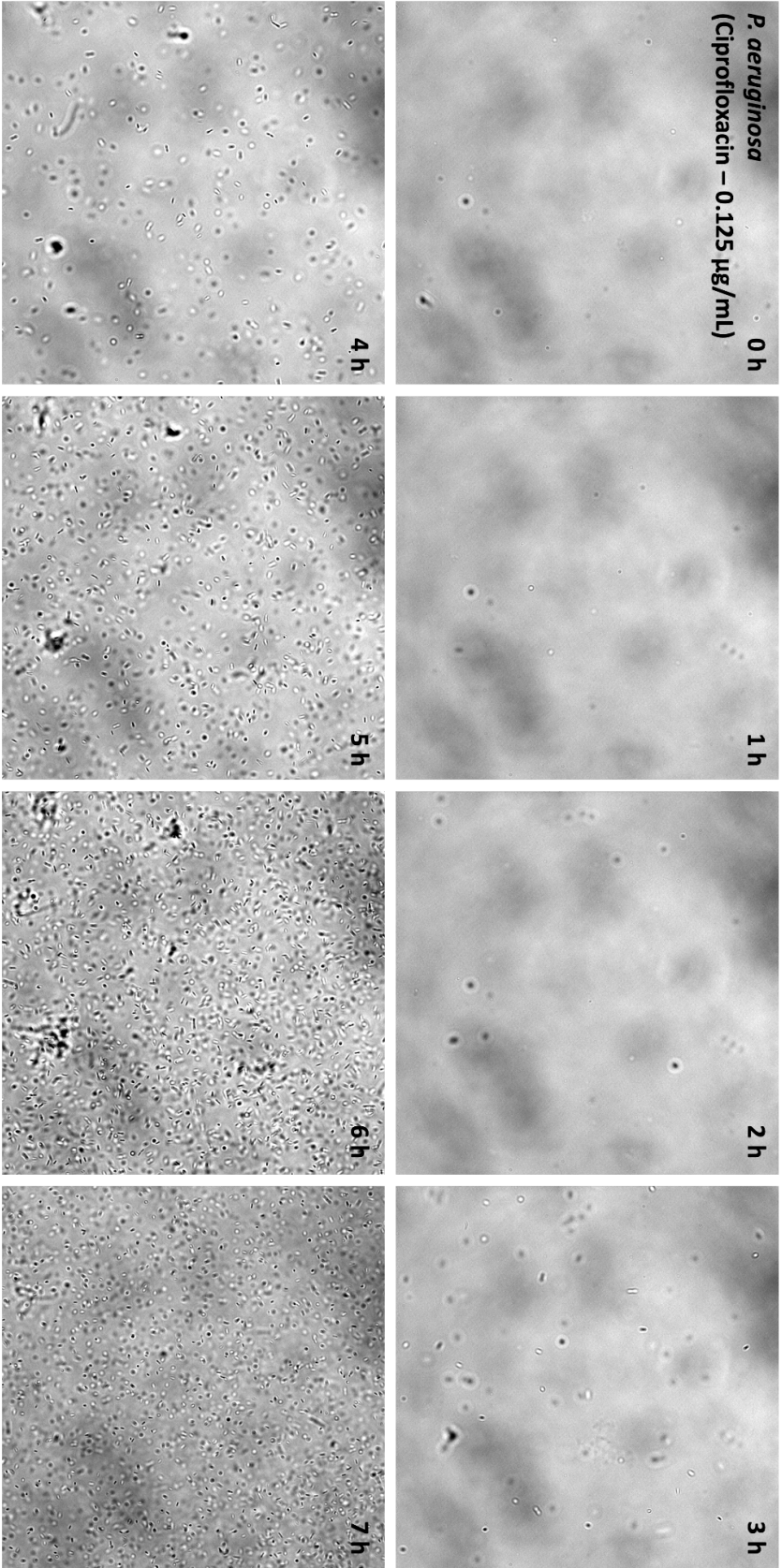
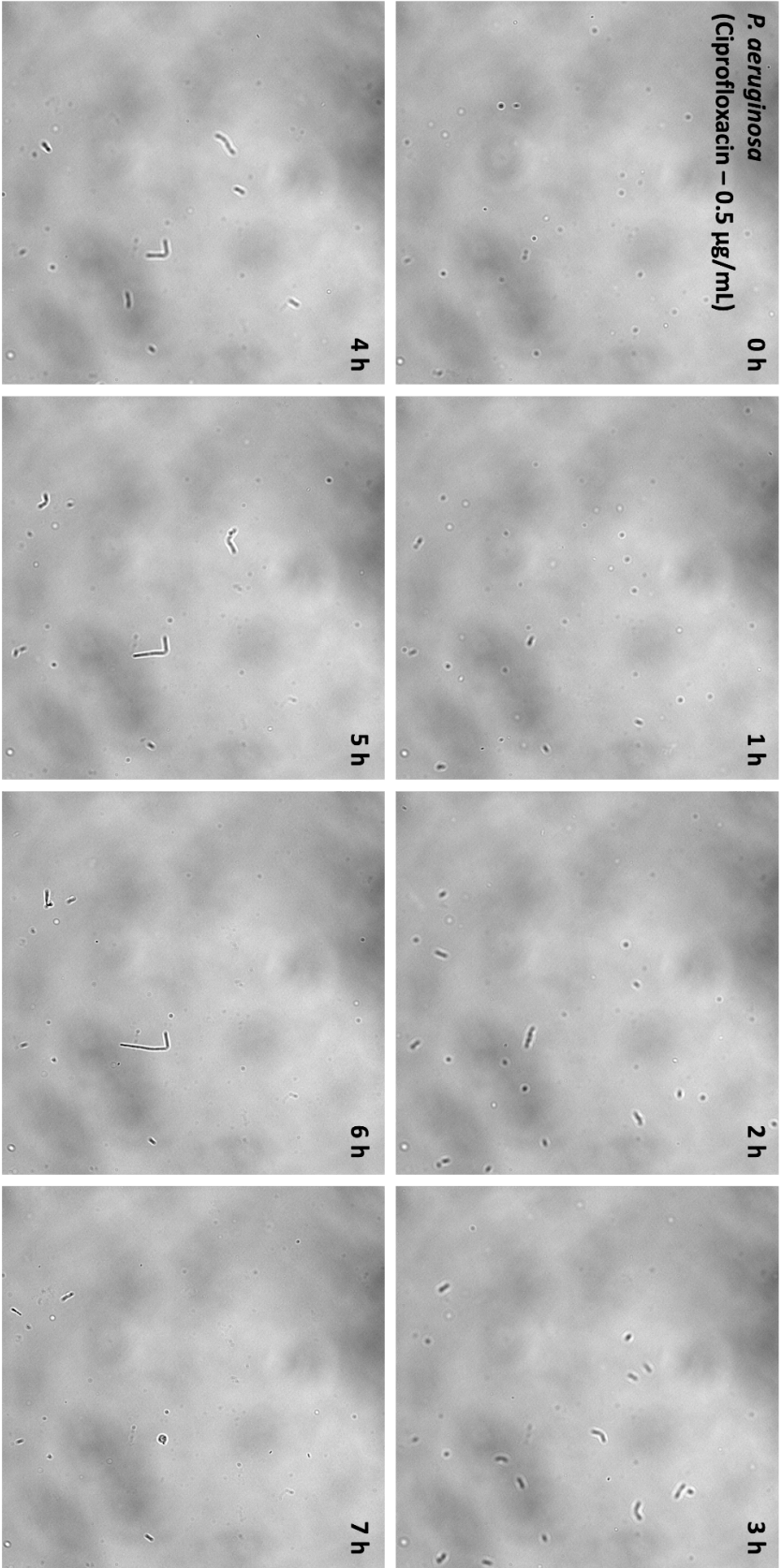
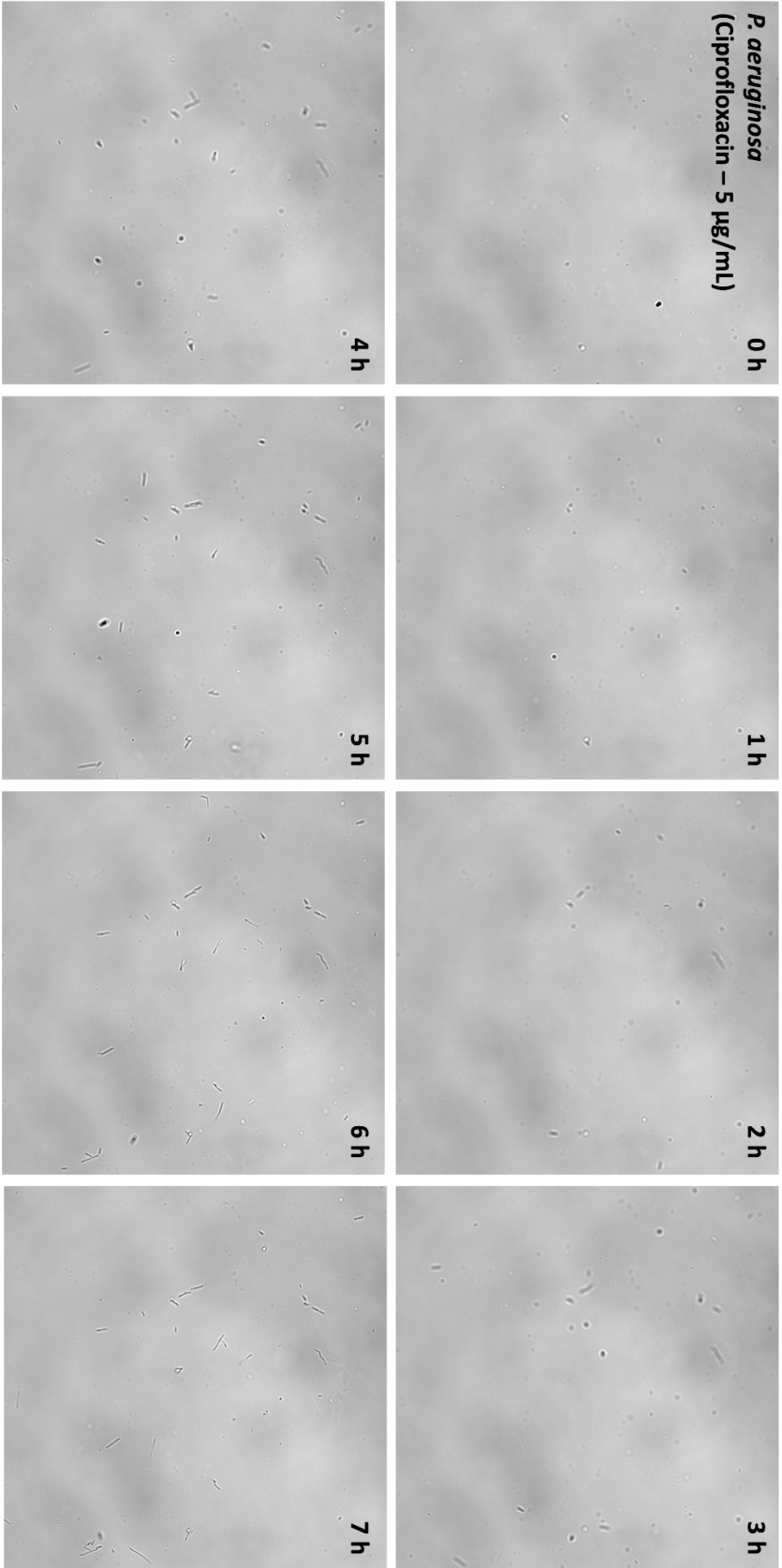


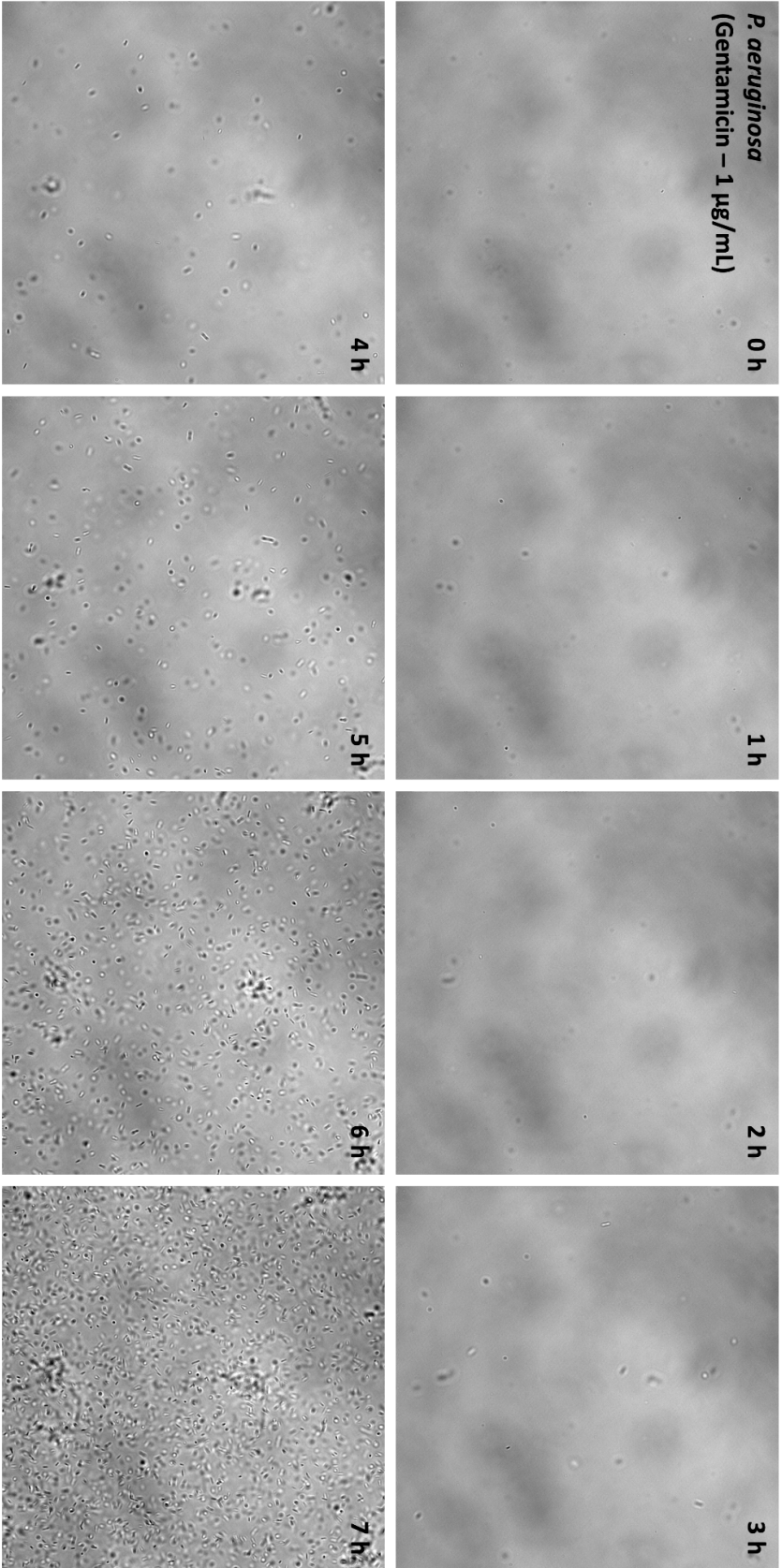
Fig. S1 Atomic force microscopy (AFM) characterization of a glass surface before and after PDMS-silane RT-CVD treatment and oxygen plasma treatment for surface patterning.

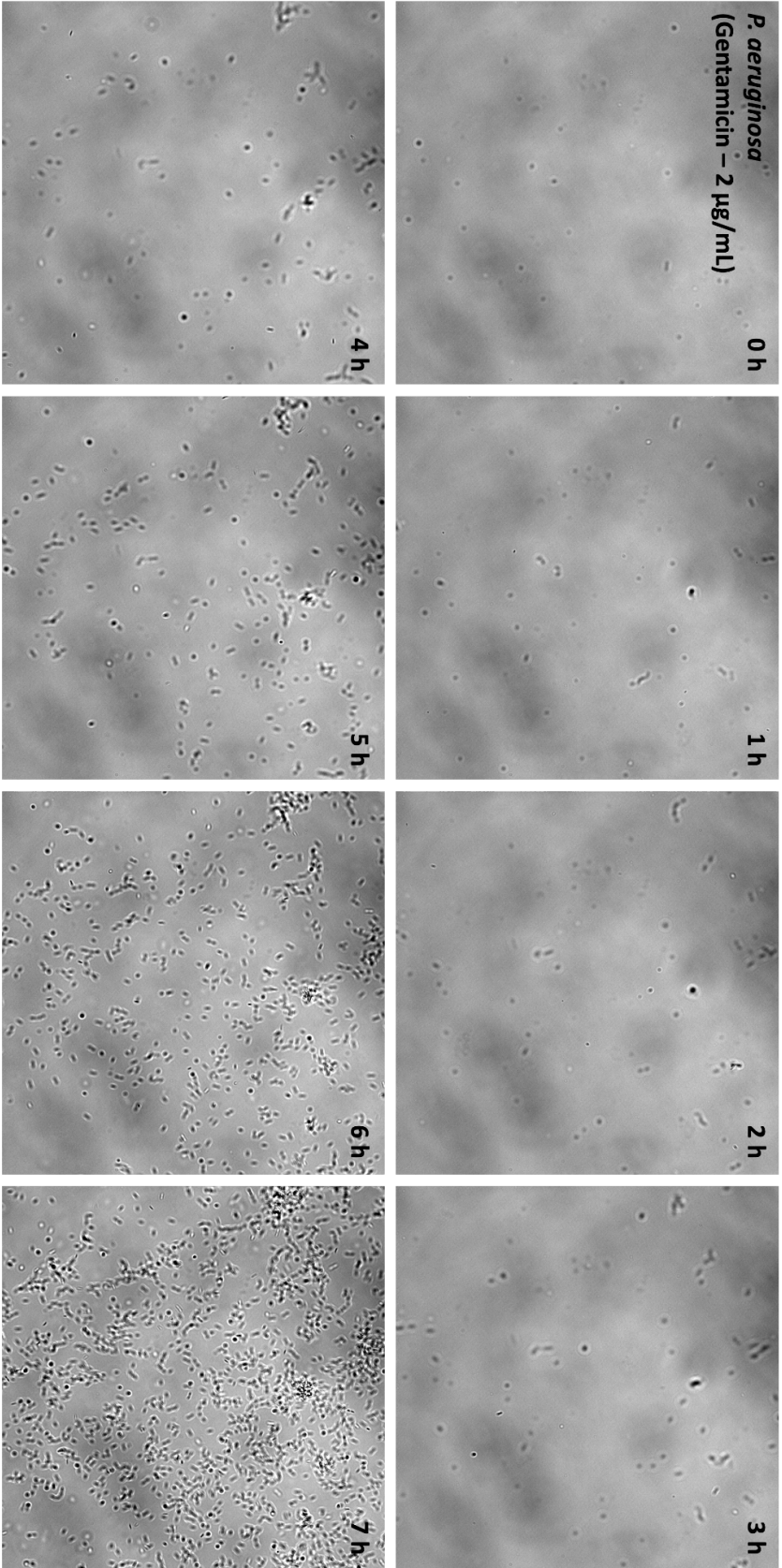


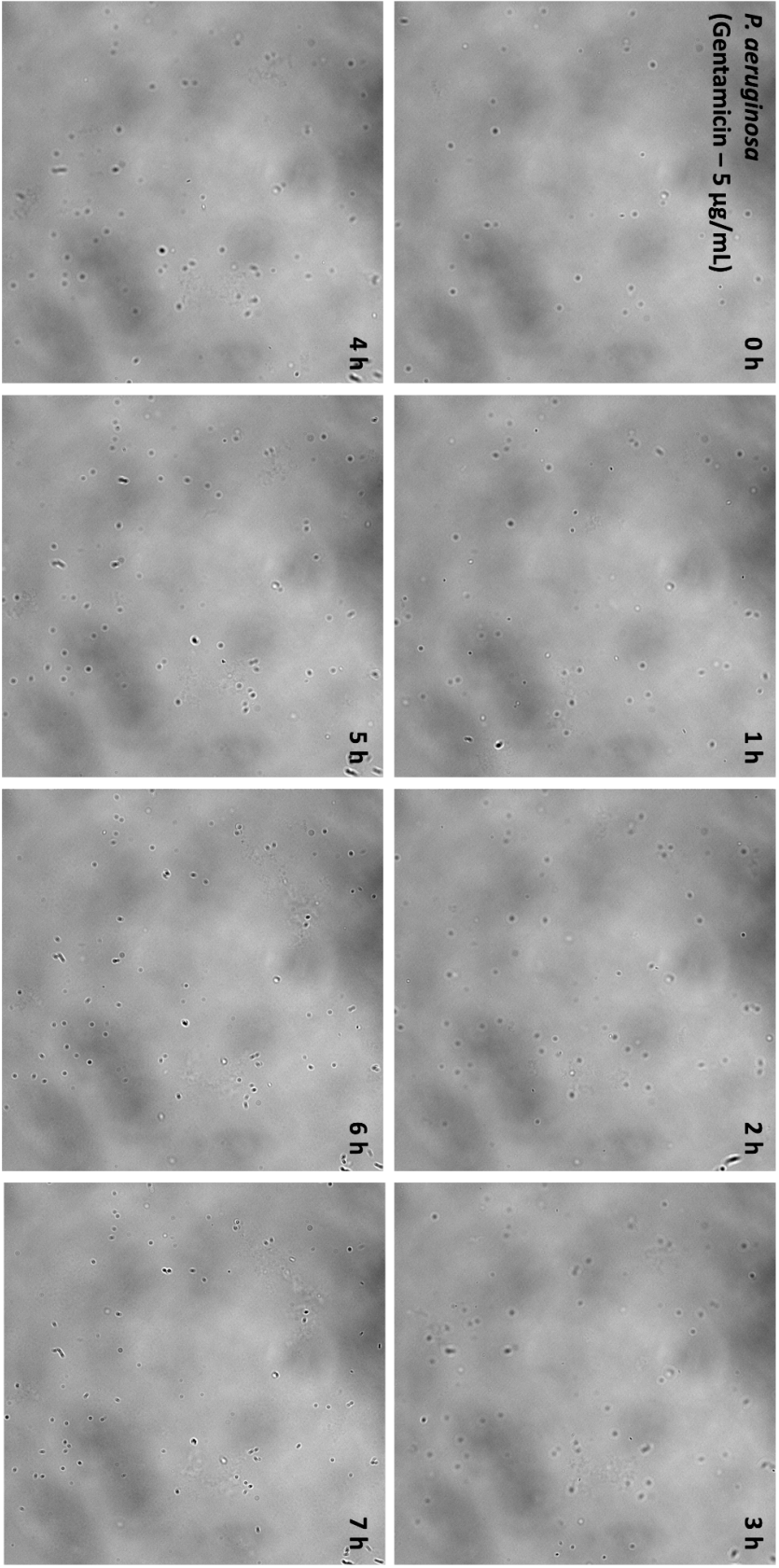


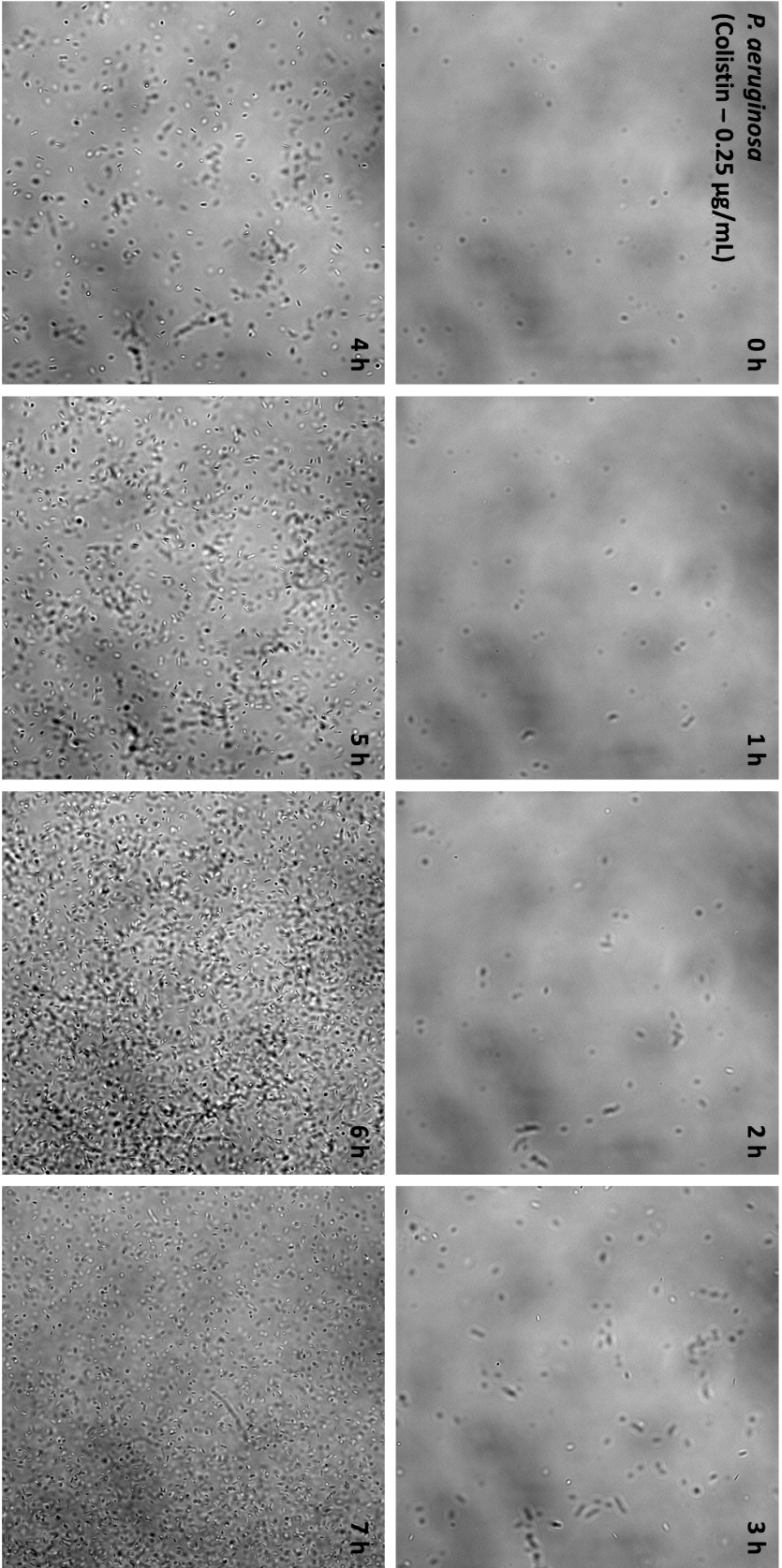


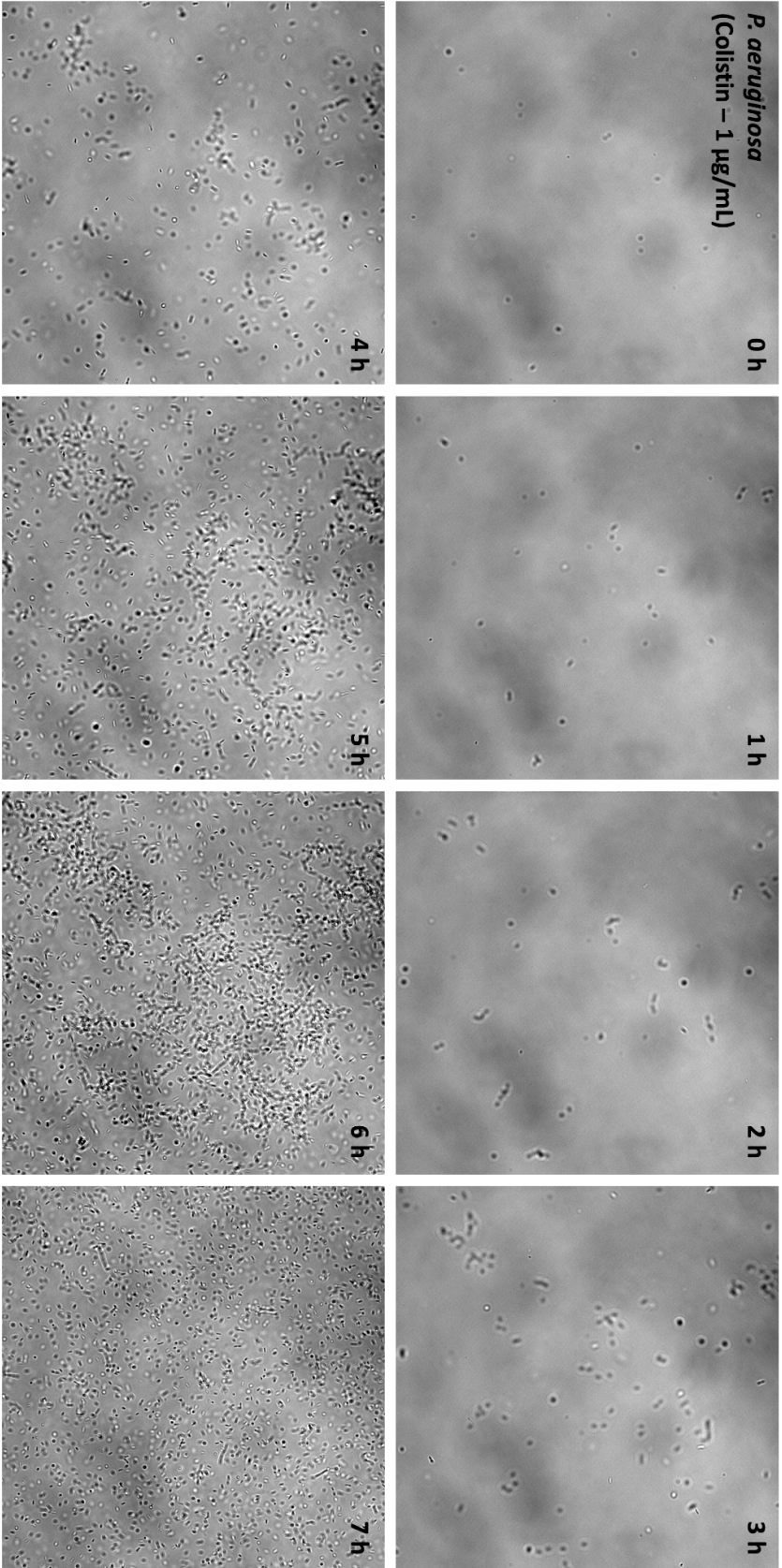


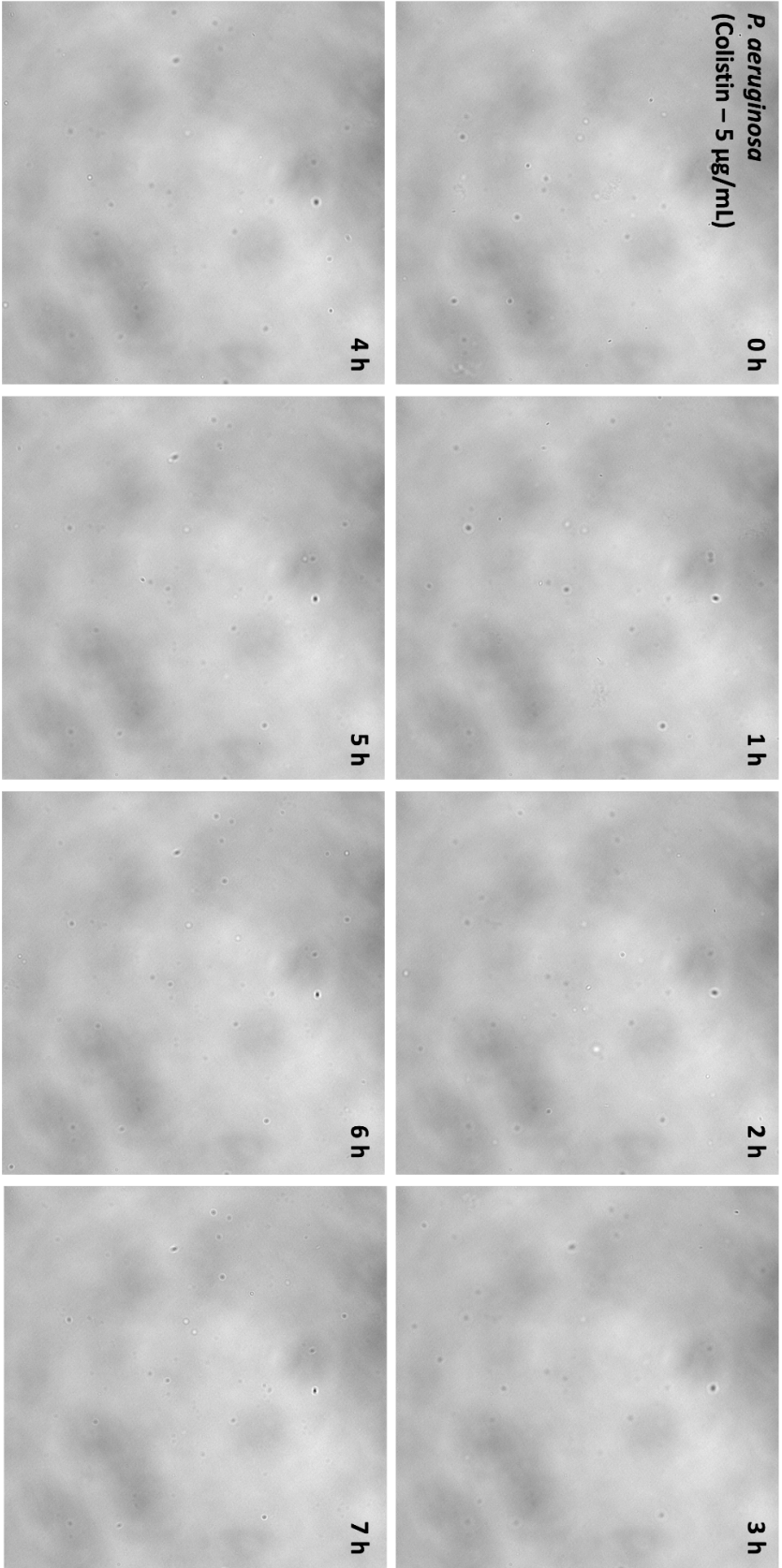


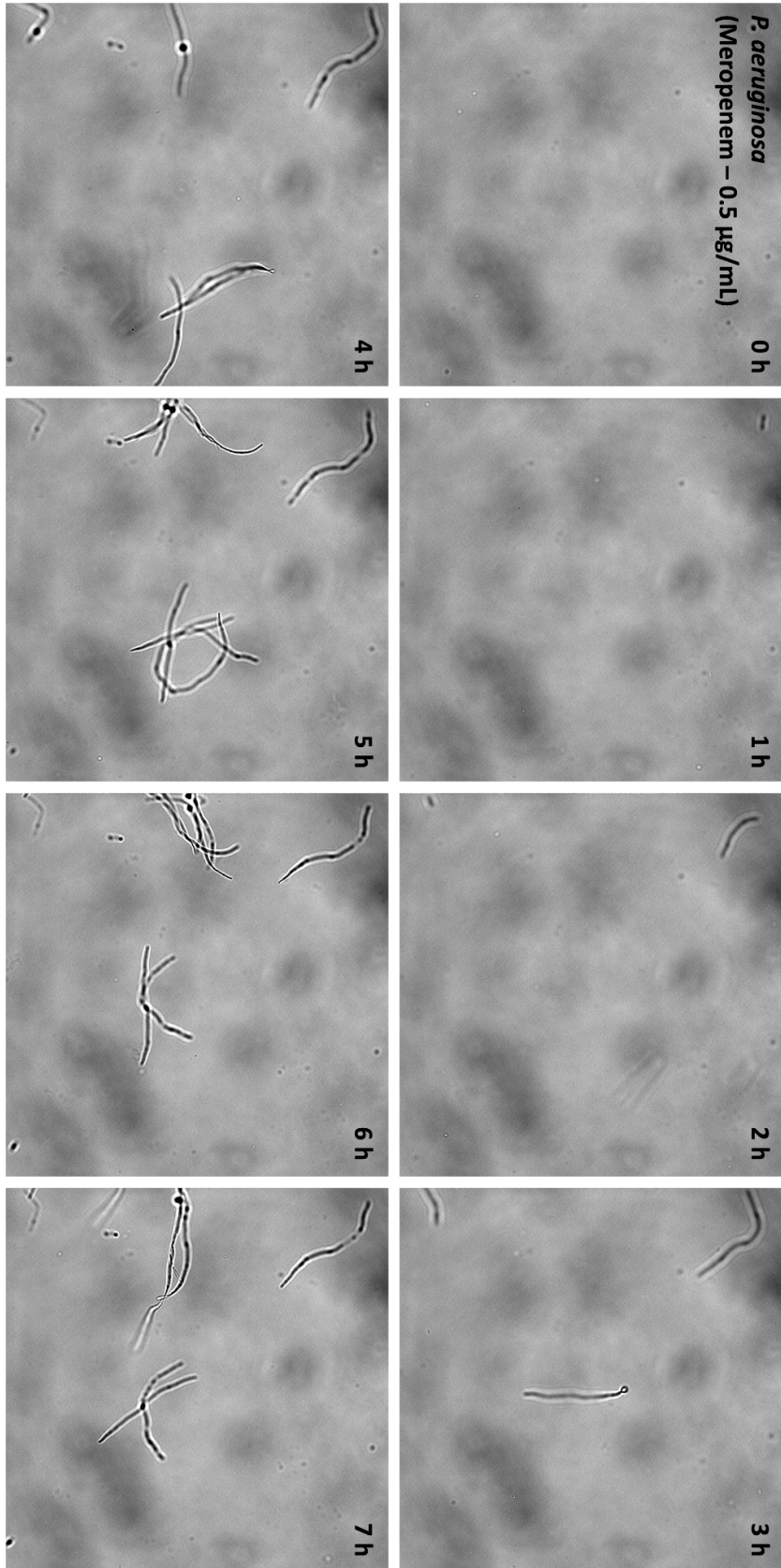


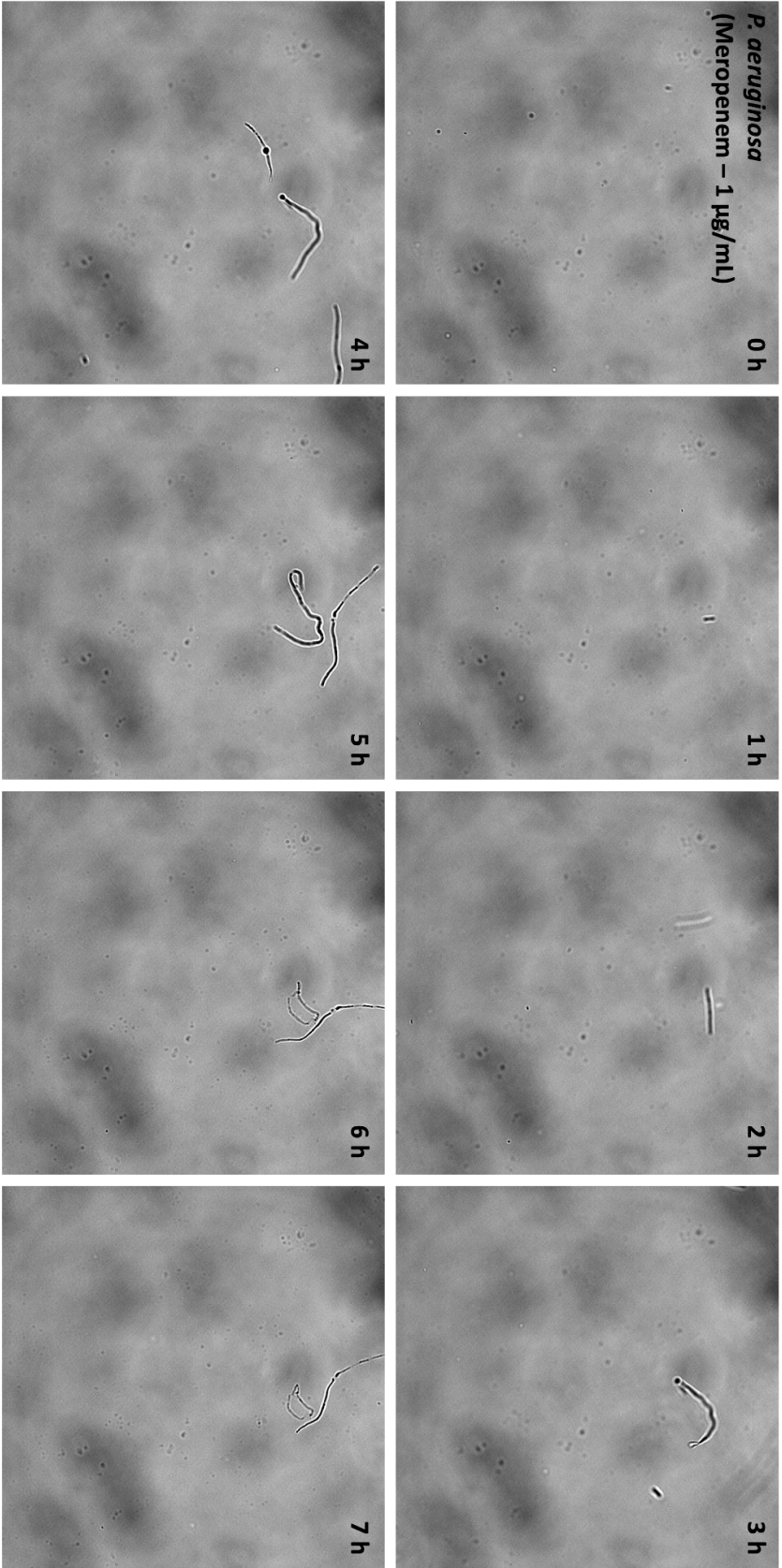












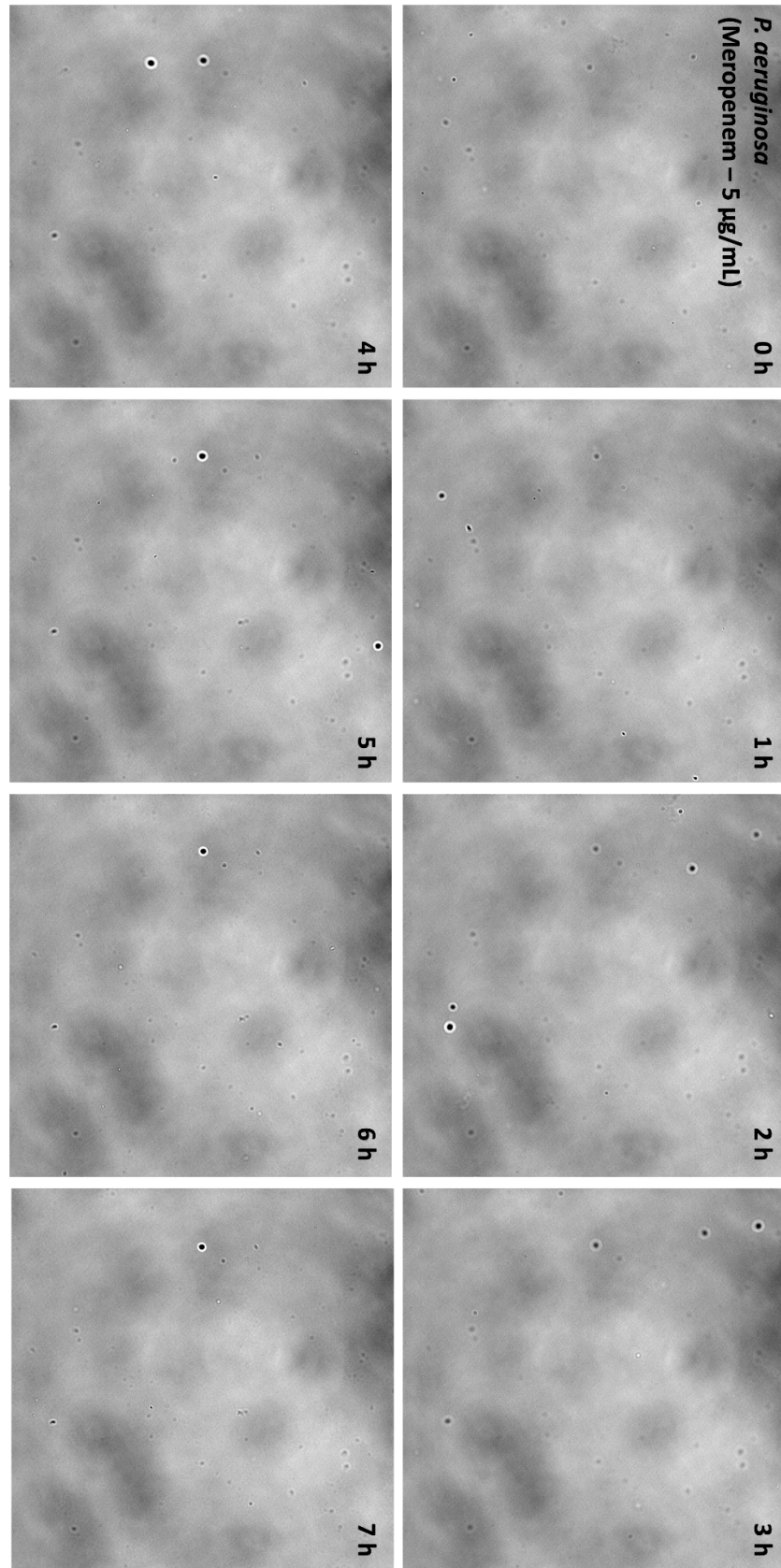


Fig. S2 Bright-field image (60× magnification) sequence from the time lapse in Fig. 2.

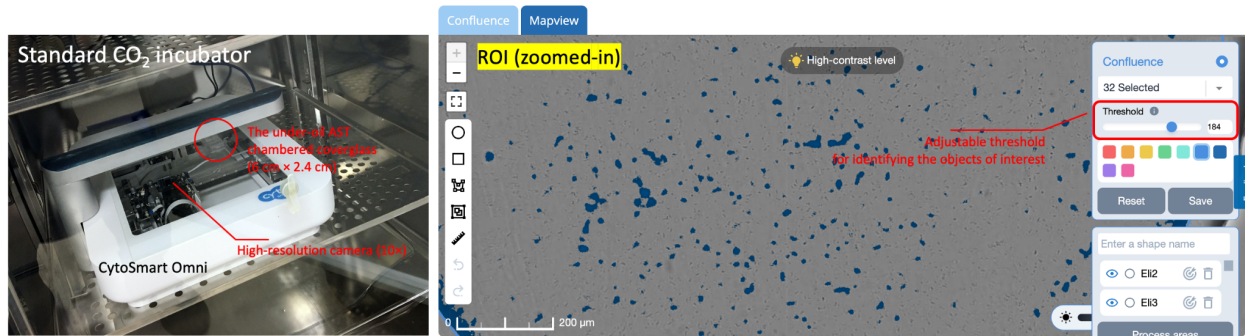


Fig. S3 The CytoSmart Omni system in a standard CO₂ incubator and the graphic user interface (GUI) for image thresholding and object identification in the confluency analysis.

Movie S1 Time lapse (12 h, 60× magnification)_*P. aeruginosa* (PA 01)_Control no drug (3600× accelerated)

Movie S2 Time lapse (12 h, 60× magnification)_*P. aeruginosa* (PA 01)_Ciprofloxacin 0.125 µg/mL (3600× accelerated)

Movie S3 Time lapse (12 h, 60× magnification)_*P. aeruginosa* (PA 01)_Getamycin 1 µg/mL (3600× accelerated)

Movie S4 Time lapse (12 h, 60× magnification)_*P. aeruginosa* (PA 01)_Colistin 0.25 µg/mL (3600× accelerated)

Movie S5 Time lapse (12 h, 60× magnification)_*P. aeruginosa* (PA 01)_Meropenem 0.5 µg/mL (3600× accelerated)