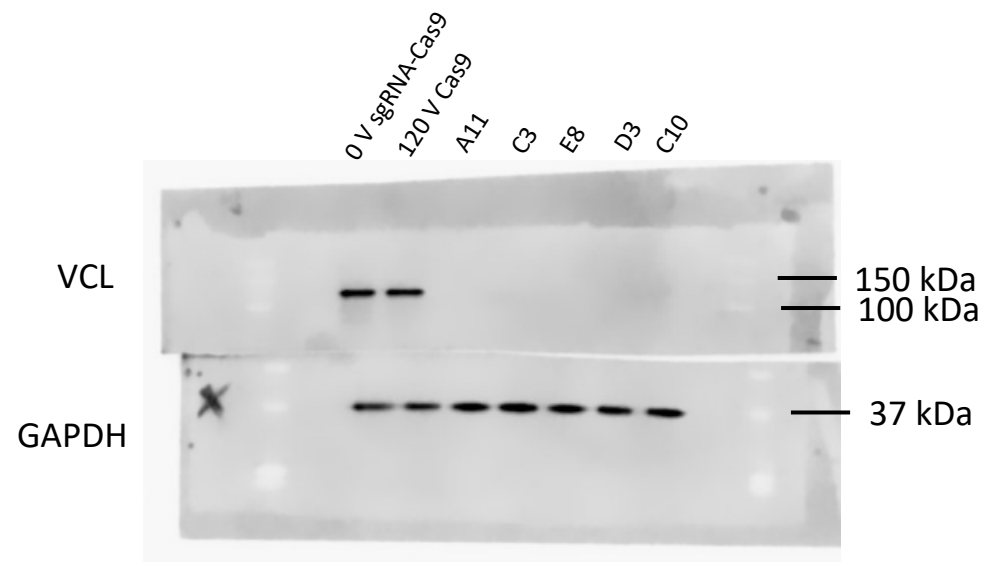


Total protein stain to show loading and ladder.

Uncropped Blots



- After transferring protein from gel to PVDF membrane, performed total protein stain and imaged in 700 nm channel.
- After total protein stain, cut membrane between 50 kDa and 75 kDa bands.
- Stained top half of membrane with vinculin and bottom half with GAPDH primary antibodies and then incubated both membranes with IR Dye 800 secondary antibody.
- Images blots in the 800 channel
- Ladder used is from Bio-Rad (Cat #1610375)