

Table S1. The elemental composition of the materials.

Samples	Elemental composition (wt%)		
	Ti	C	N
g-C <sub>3</sub> N <sub>4</sub>	-	37.05	62.95
CN-TCM-1	18.09	79.60	2.30
CN-TCM-2	11.63	73.93	14.44
CN-TCM-3	6.32	76.77	16.90
CN-TCM-5	3.77	74.04	22.18

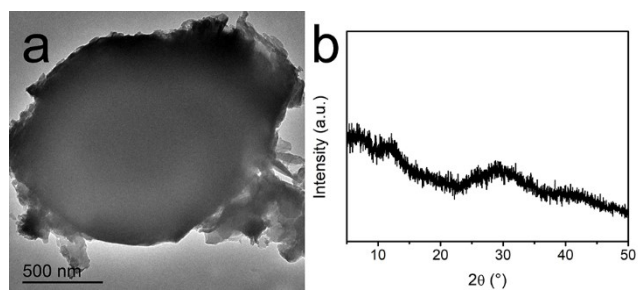


Figure S1. The TEM (a) and XRD (b) results of CN-TCM-3 after the consecutive repeating experiments.