

Electronic Supplementary Information

Camptothecin-loaded supramolecular nano-delivery system based on amphiphilic calix[4]arene for targeted tumor therapy

Han-yuan Zheng, ‡^{a,b} Yu-dun Liu, ‡^{a,b} Yu-lei Zhang, ^{a,b} Qing-hua Shi, ^{a,b} Xue-li Hou, ^{a,b} Lin An*^{a,b}

^a College of Pharmacy, Xuzhou Medical University, Xuzhou 221004, P. R. China

^b Jiangsu Key Laboratory of New Drug Research and Clinical Pharmacy, Xuzhou Medical University, Xuzhou 221004, P. R. China

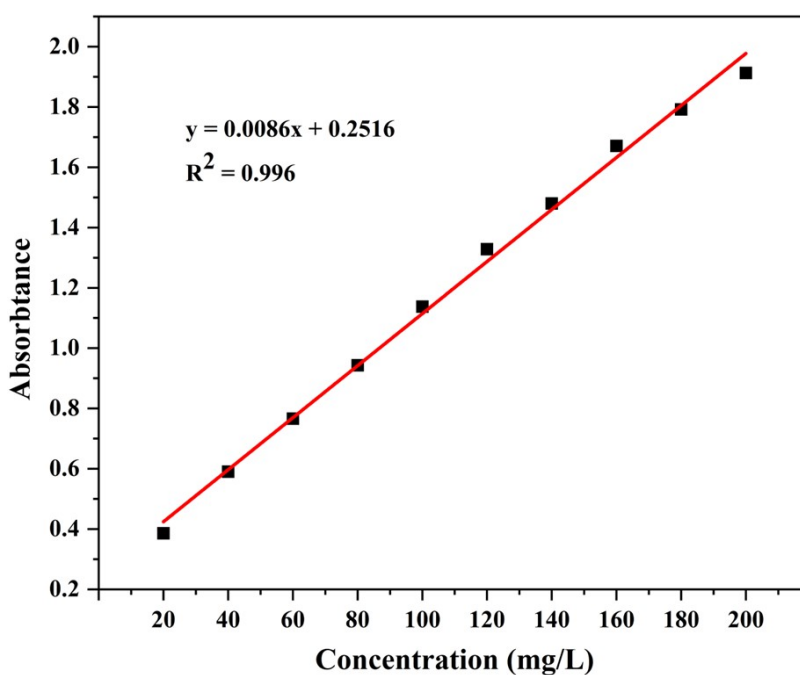


Figure S1. UV Standard Curve of Camptothecin.

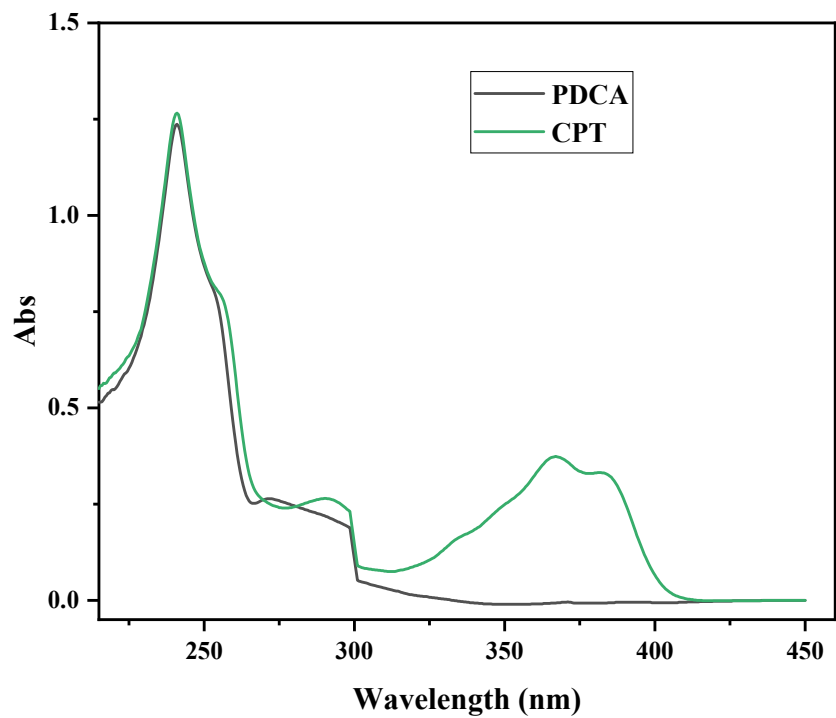


Figure S2. UV-Vis spectrum of PDCA, CPT at the concentration of 20 μM in DMSO.

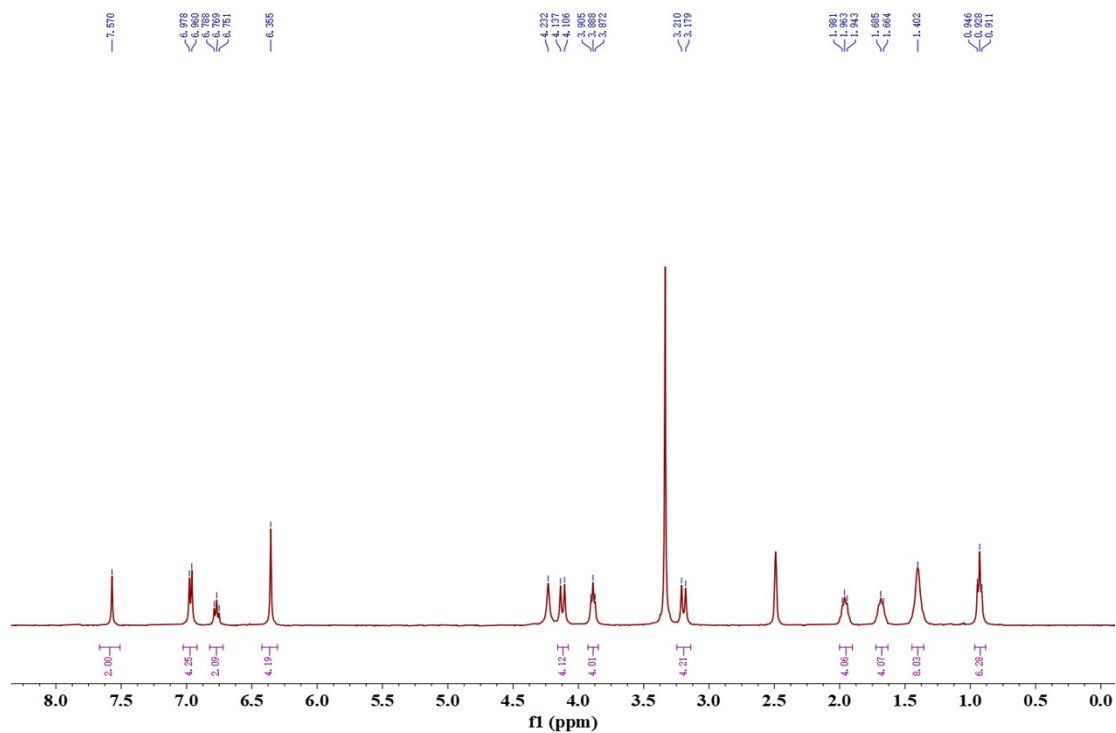


Figure S3. ^1H NMR spectrum of compound ADCA.

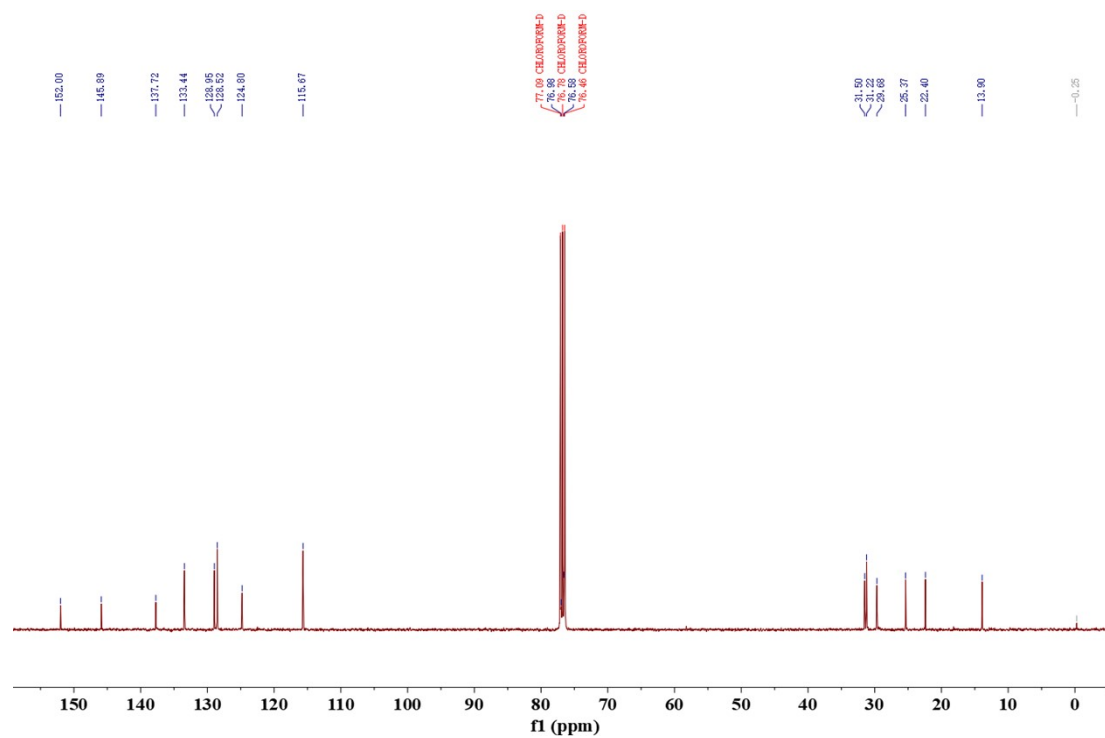


Figure S4. ¹³C NMR spectrum of compound ADCA.

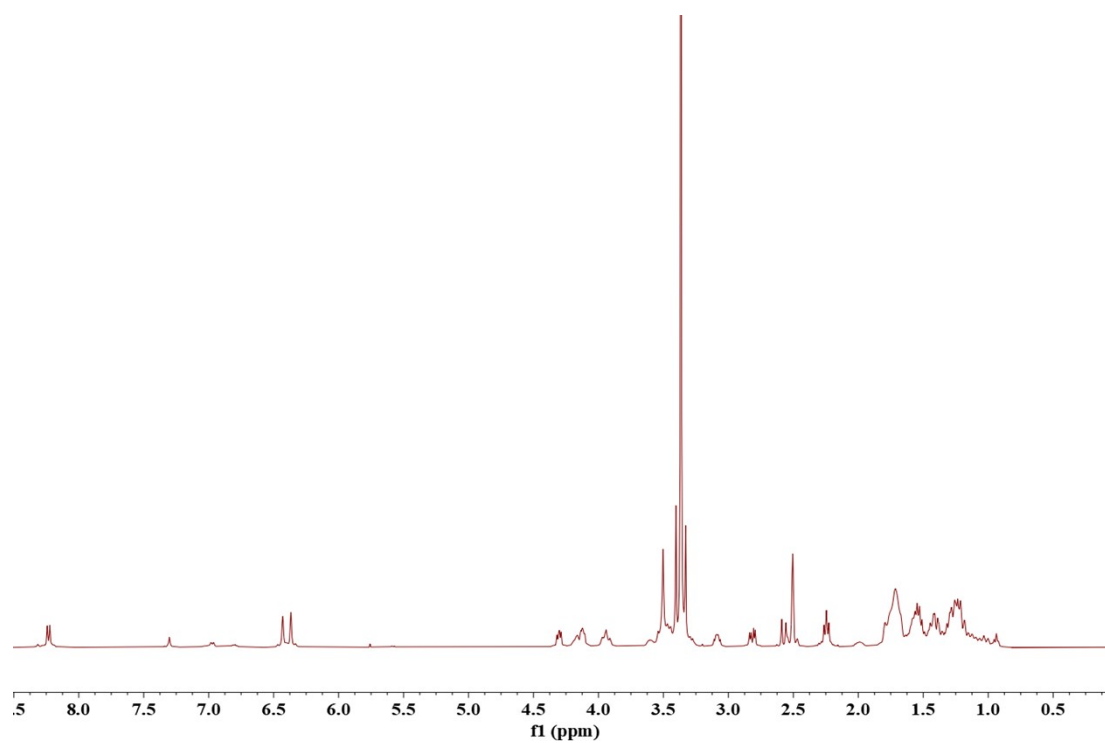


Figure S5. ¹H NMR spectrum of compound PDCA.

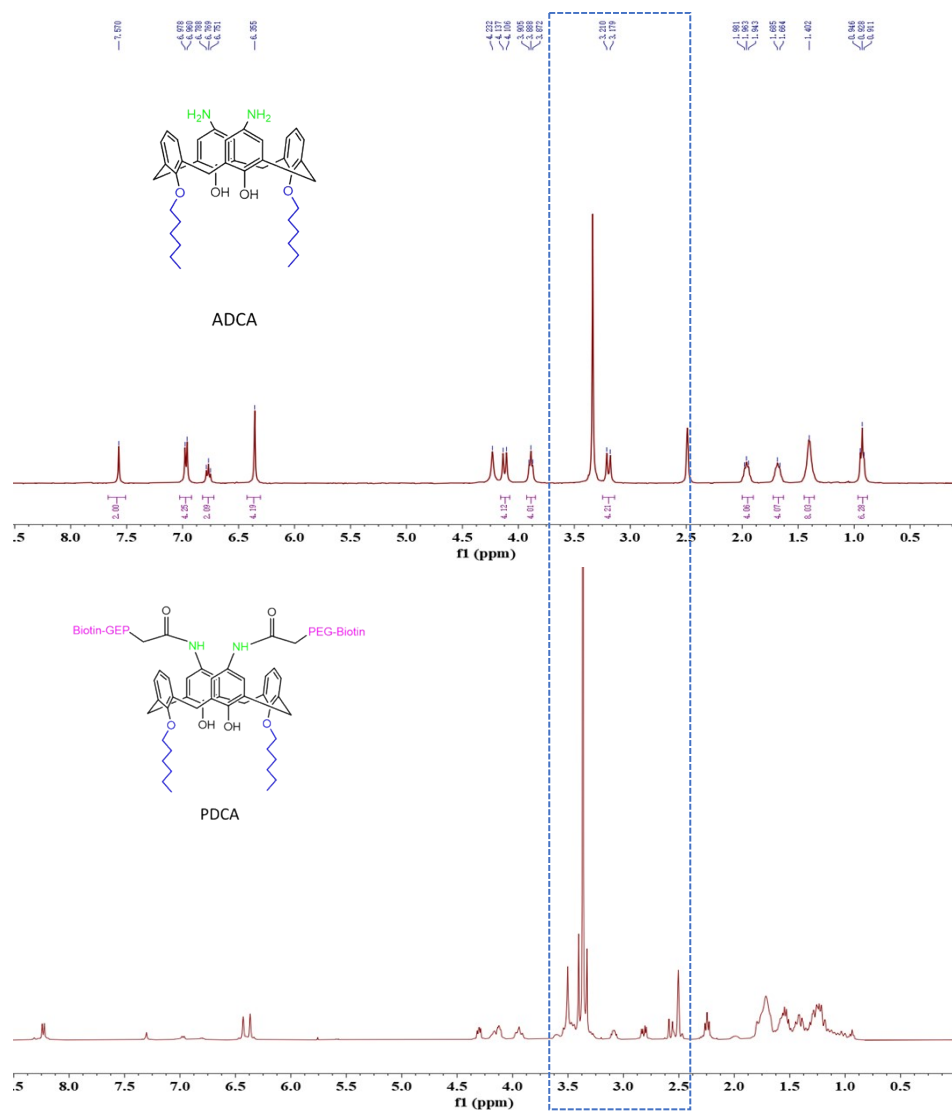


Figure S6. Comparison of the ¹H NMR spectra of the compounds ADCA and PDCA.