

Supplementary figures

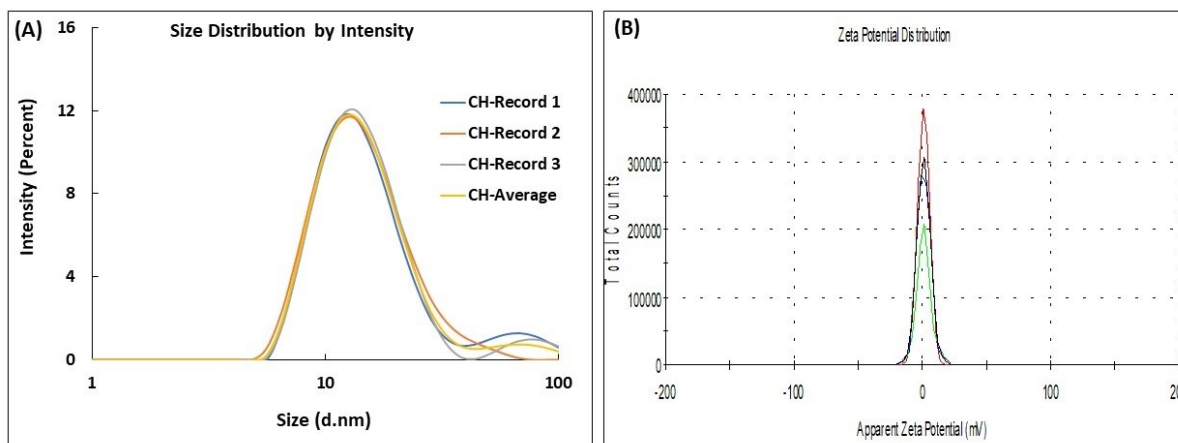


Figure S1. (A) Size and (B) zeta potential of nCH.

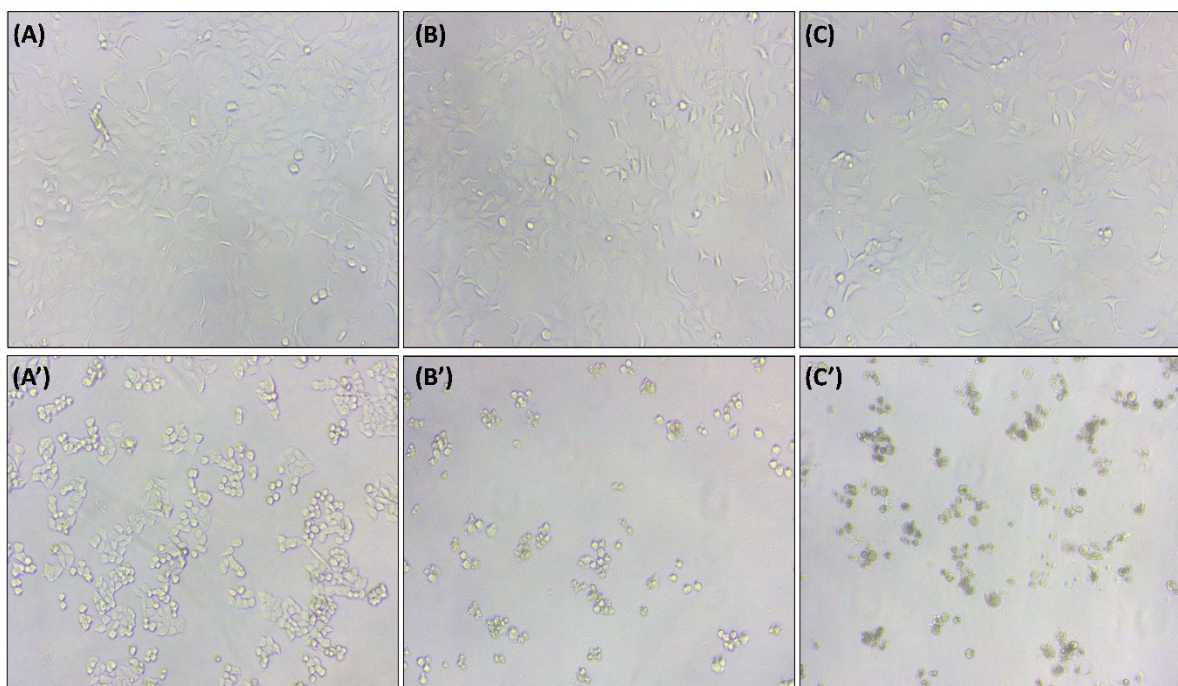


Figure S2. Morphological changes in HEK-293 (A-C) and HCT-116 (A'-C') cells after the treatment with pure CH (B and B') and nCH (C and C') as compared to control (A and A'). Images were captured by an inverted phase microscope at 10X magnification.

