

Supporting Information

Efficient and low roll-off deep-blue organic light-emitting diodes with anthracene-based compounds as hosts

Tong Sun^a, Xinfeng Shui^d, Weian Chen^b, Yi Chen^c, Wei Shi^b, Jinhai Huang^c, Bin Wei^b

^a *School of Materials Science and Engineering, Shanghai University, Shanghai 200072, China.*

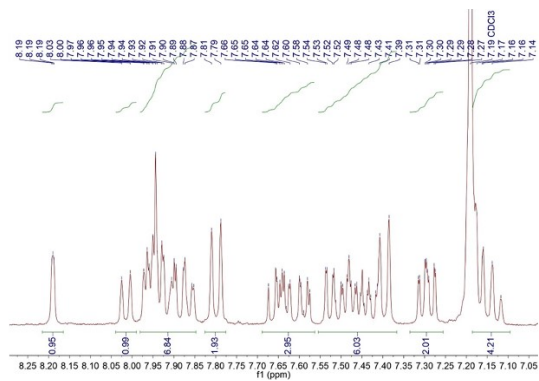
^b *School of Mechatronic Engineering and Automation, Key Laboratory of Advanced Display and System Applications, Ministry of Education, Shanghai University, 200072, Shanghai, People's Republic of China.*

^c *Shanghai Taoe Chemical Technology Co., Ltd, Shanghai, PR China.*

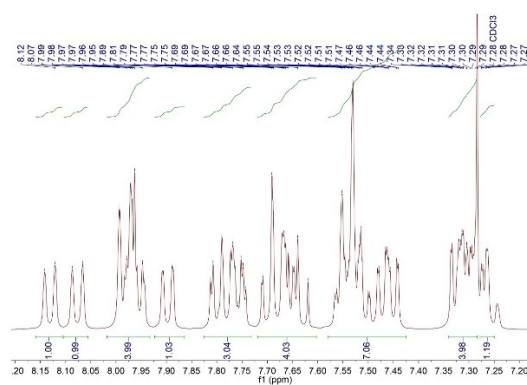
^d *Anhui Sholon New Material Technology Co., Ltd. Chuzhou, Anhui Province 239500, P. R. China*

Fig. S1. ^1H NMR spectrum of (a) NA-AN-NA, (b) NA-AN-1-DBF, (c) PH-AN-1-DBF, and (d) PH-AN-2-DBF

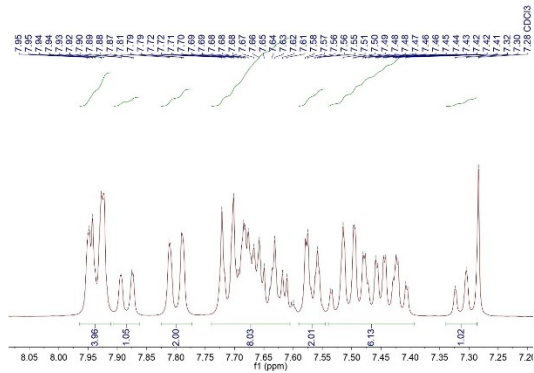
(a)



(b)



(c)



(d)

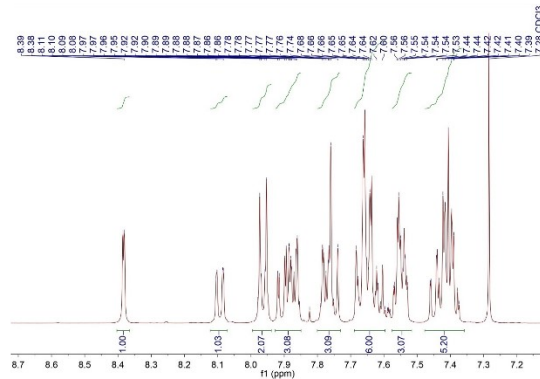


Fig. S2. ^{13}C NMR spectrum of (a) NA-AN-1-DBF, (b) PH-AN-1-DBF, and (c) PH-AN-2-DBF.

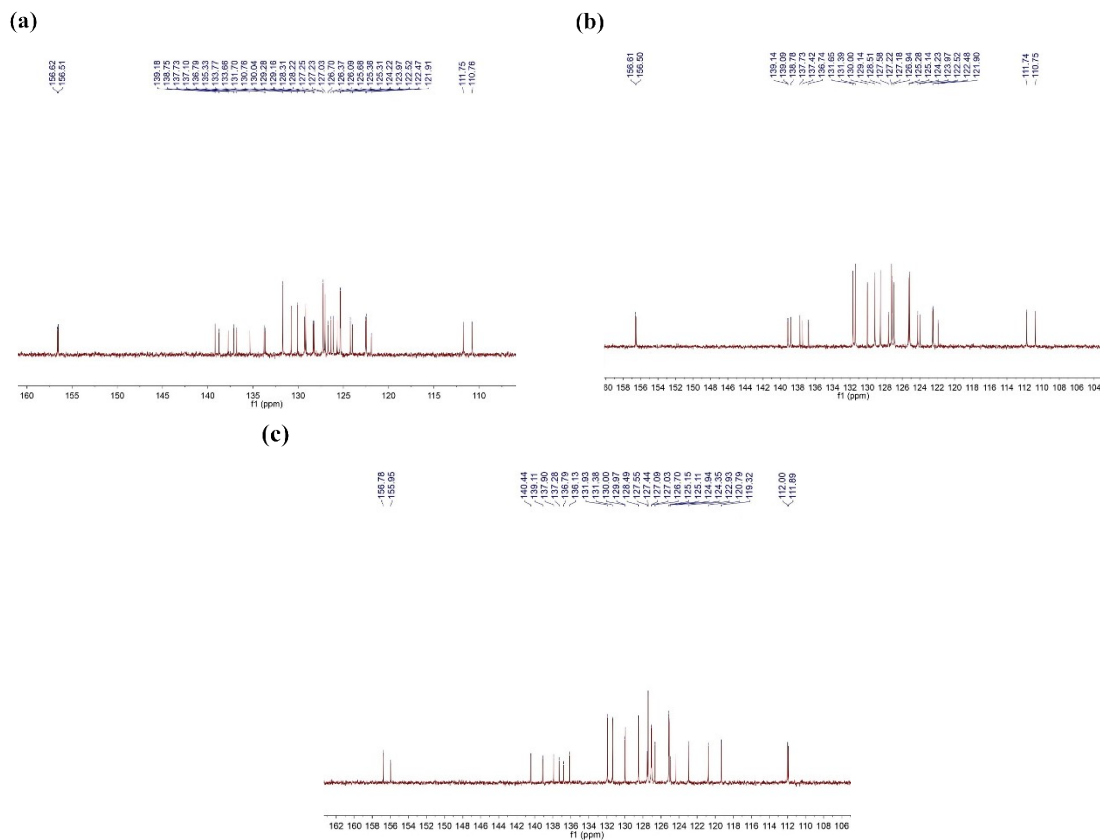
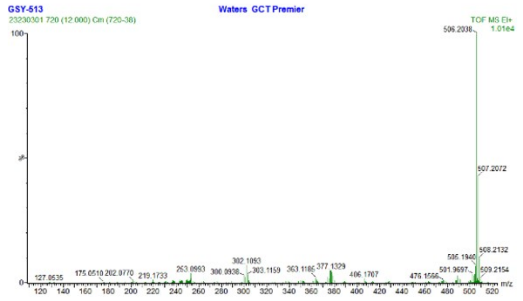
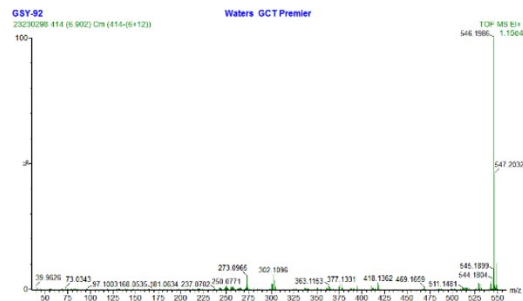


Fig. S3. HRMS spectrum of (a) NA-AN-1-DBF, (b) PH-AN-1-DBF and (c) P H-AN-2-DBF.

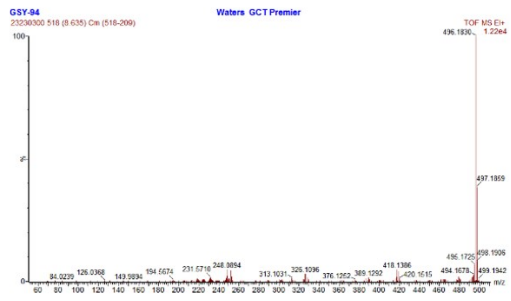
(a)



(b)



(c)



(d)

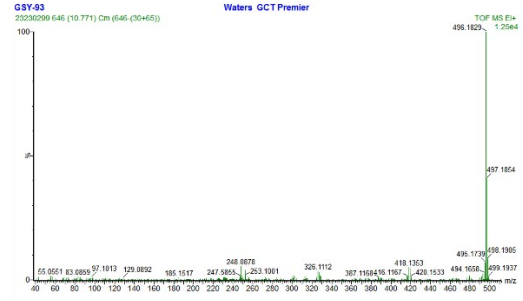


Fig. S4. The LTPL spectra of NA-AN-NA, NA-AN-1-DBF, Ph-AN-1-DBF, and Ph-AN-2-DBF.

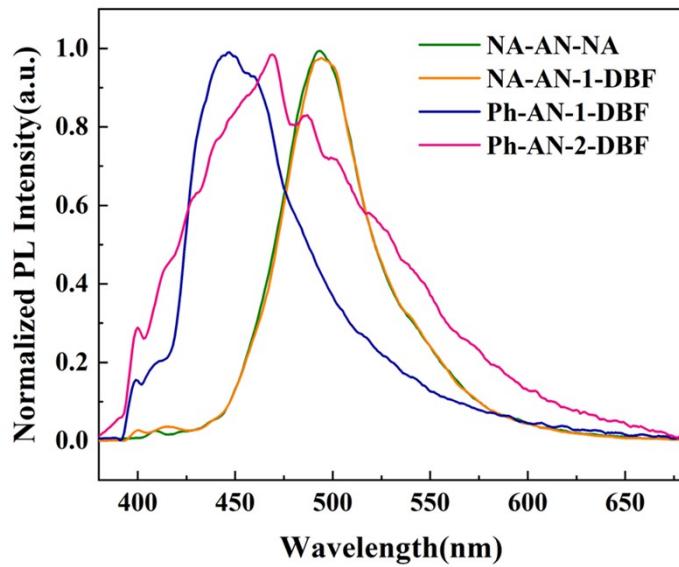
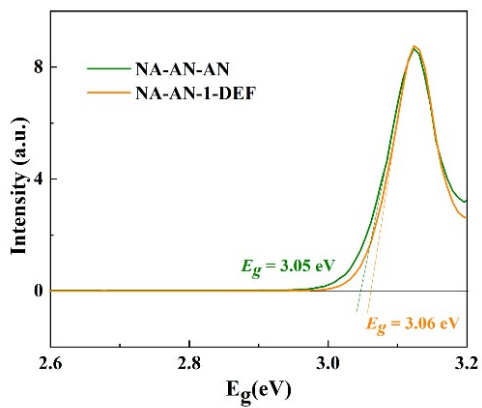


Fig. S5. UV-vis-near-IR spectra of NA-AN-NA, NA-AN-1-DBF, Ph-AN-1-DBF, and Ph-AN-2-DBF at 298 K.

(a)



(b)

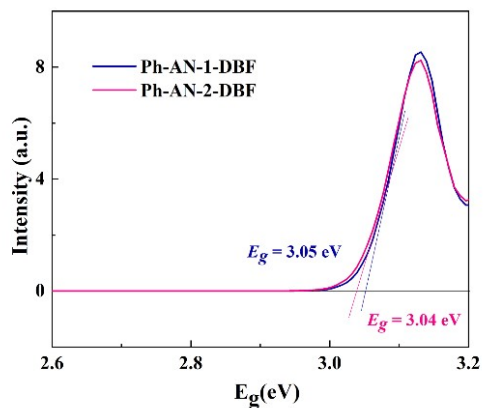


Fig. S6. EQE-L characteristics of devices.

