

Figure S1 Evolution of dopamine in deionized water

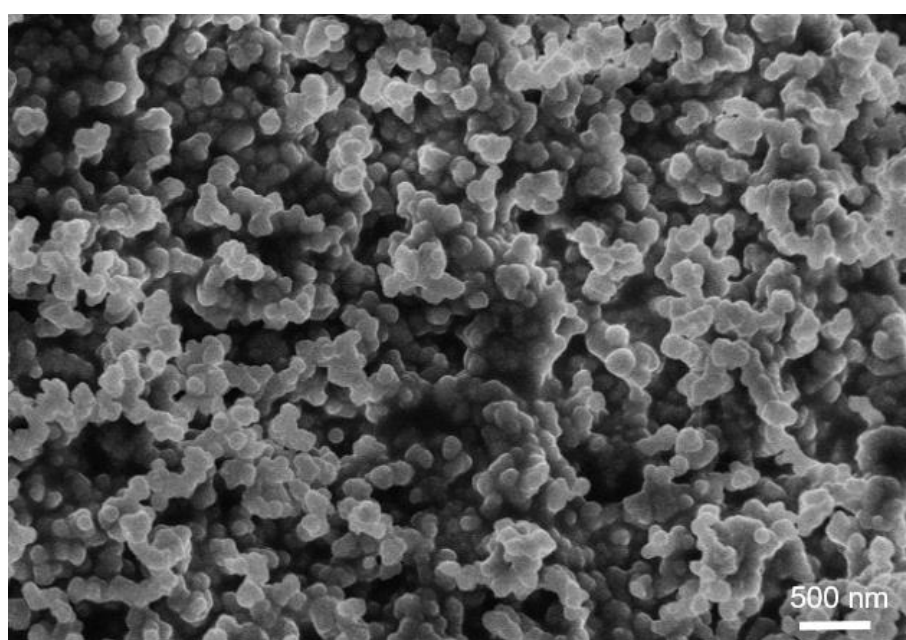


Figure S2 SEM of Pure PDA

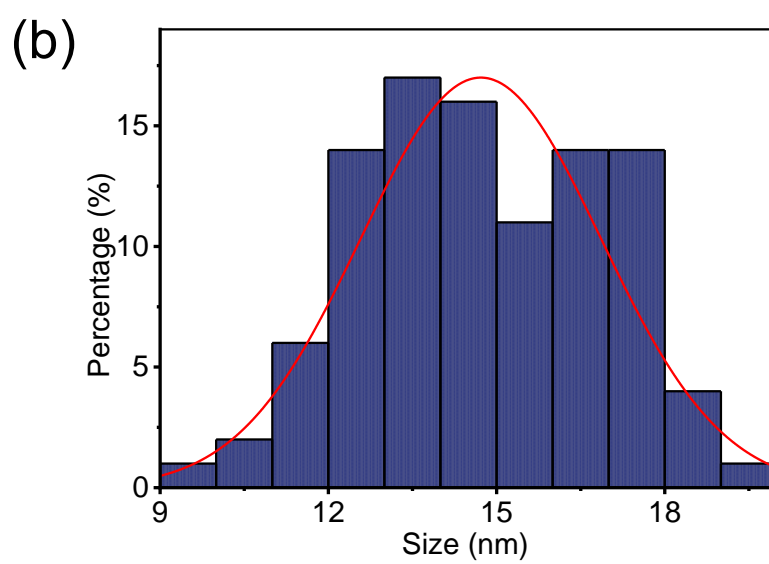
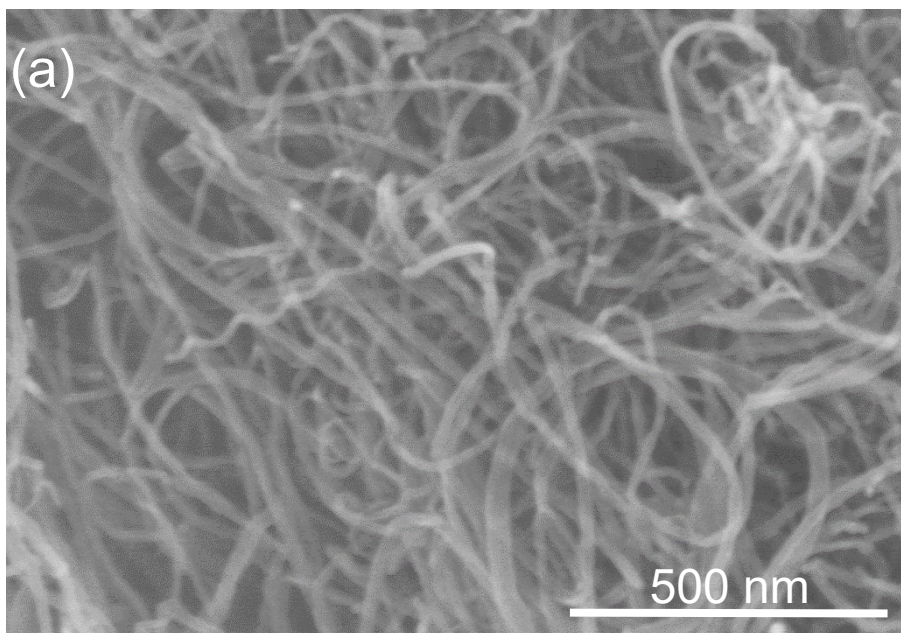


Figure S3 (a)SEM of pure CNT and (b)measured diameter distribution

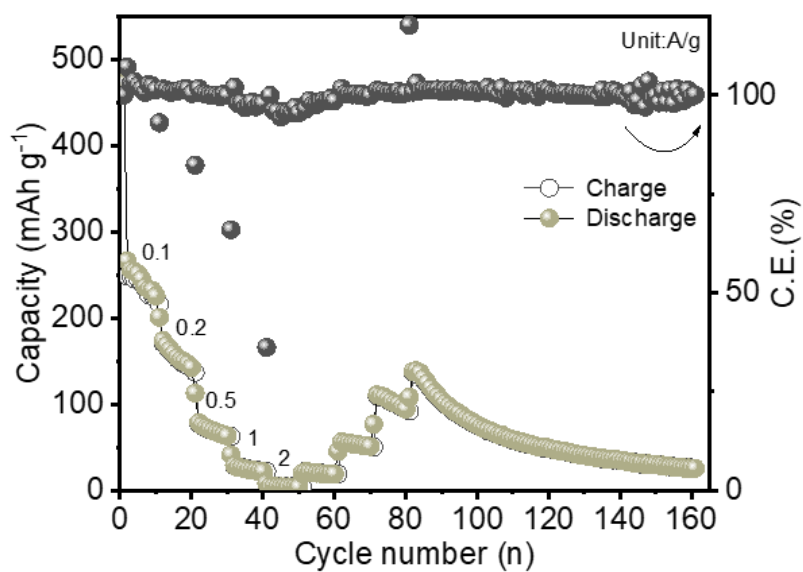


Figure S4 Multiplication cycle of pure PDA

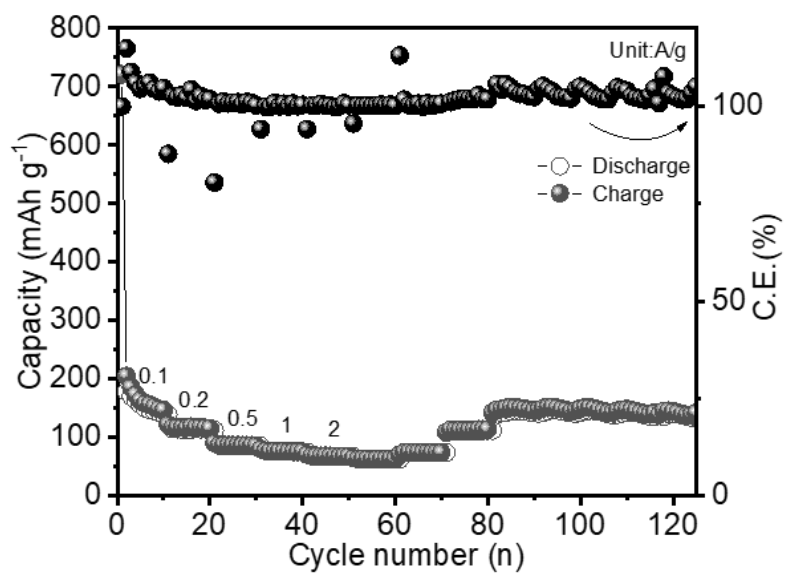


Figure S5 Multiplication cycle of pure CNT

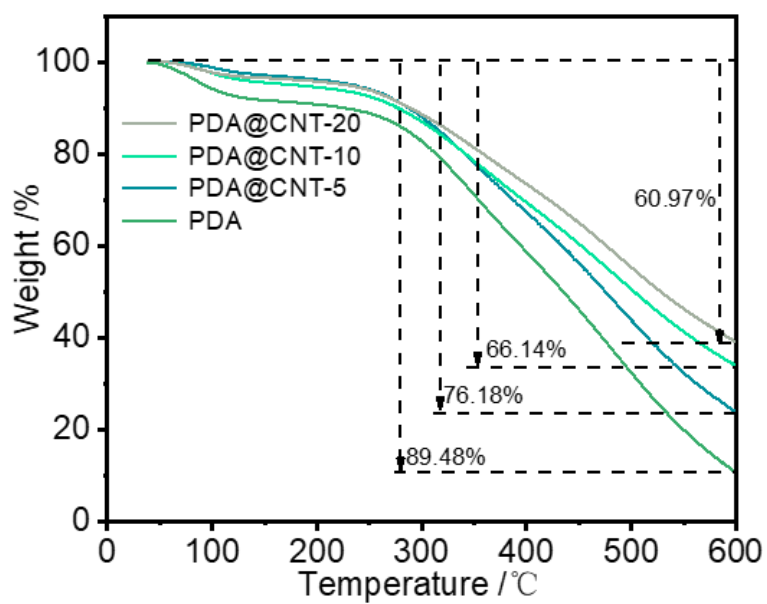


Figure S6 TGA curve from room temperature to 600 °C with heating rate of 10 °C/min under air atmosphere

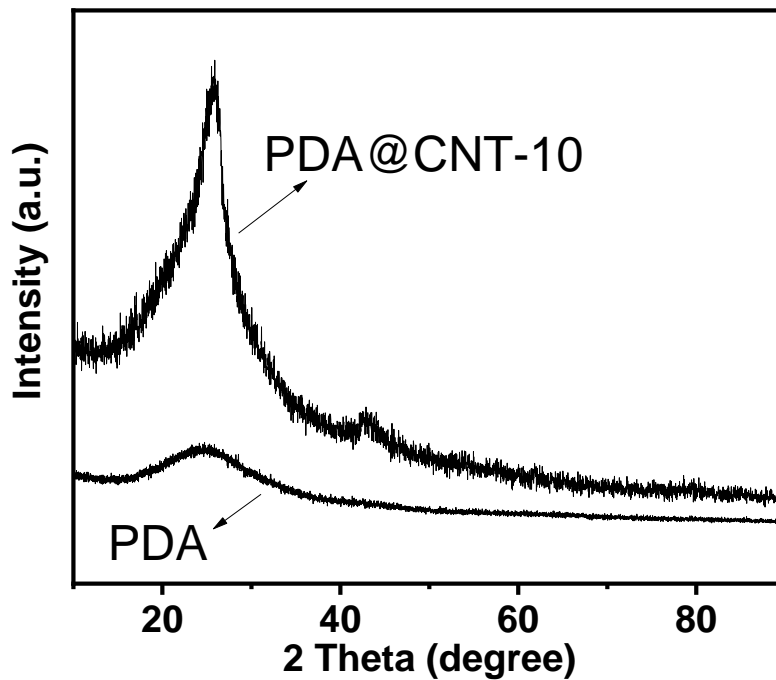


Figure S7 XRD pattern of the PDA and PDA@CNT-10