

Investigation on sponge medium for efficient concurrent tumor treating fields and radiotherapy for glioblastoma

Jiajun Zheng^{1, 2}, Huanfeng Zhu¹, Wenjie Guo¹, Chenchen Gao³, Jiahao Guo³, Li Sun¹, Geng Xu¹, Zhi Wang⁴, Baoying Dai^{3*}, Ning Gu^{2, 5*}, and Xia He^{1*}

1 Jiangsu Cancer Hospital, the Affiliated Cancer Hospital of Nanjing Medical University, Jiangsu Institute of Cancer Research, Nanjing 210009, China

2 School of Biomedical Engineering and Informatics, Nanjing Medical University, Nanjing 211166, China

3 State Key Laboratory of Organic Electronics and Information Displays & Institute of Advanced Materials (IAM), Jiangsu Key Laboratory for Biosensors, Jiangsu National Synergetic Innovation Center for Advanced Materials (SICAM), Nanjing University of Posts and Telecommunications, Nanjing 210023, China

4 The First Affiliated Hospital of Anhui Medical University, Nanjing 230022, China

5 Medical School, Nanjing University, Nanjing 210093, China

* Corresponding Authors

Email: iambydai@njupt.edu.cn (Baoying Dai); guning@nju.edu.cn (Ning Gu); hexiabm@163.com (Xia He)

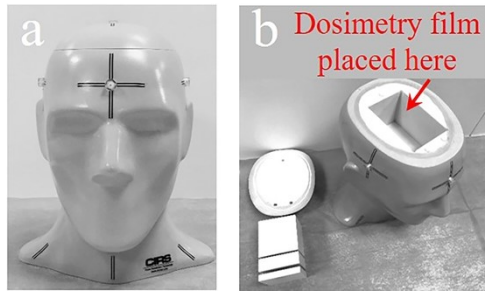


Fig. S1 Digital pictures of HN-038 with a) dismantled emulation cranium and b) built-in cubes.

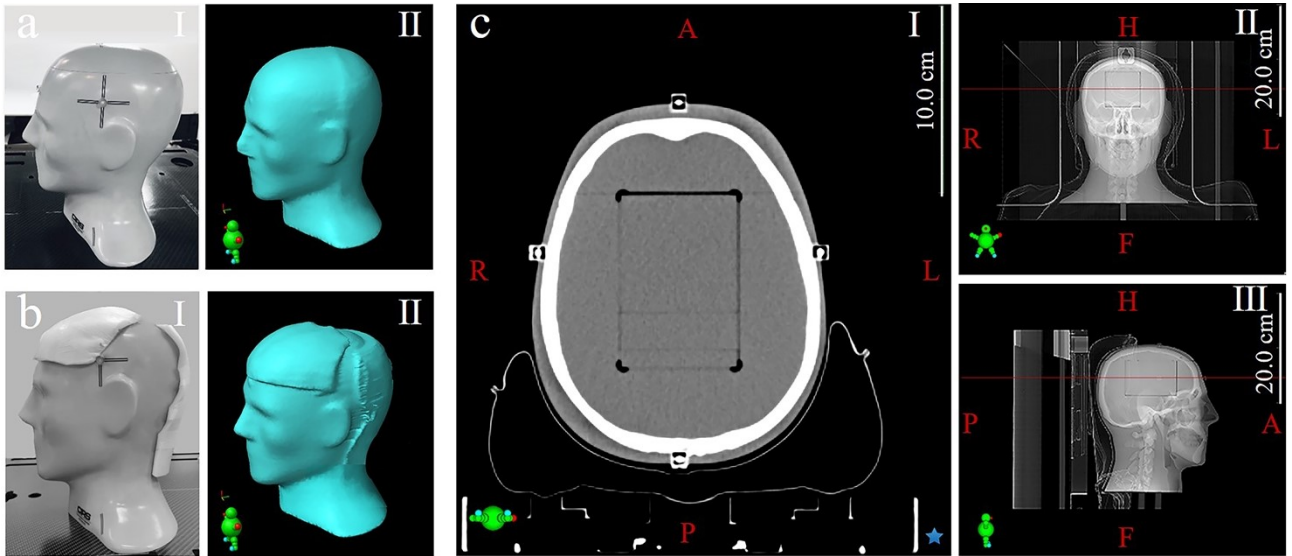


Fig. S2 Digital pictures of HN-038 (I) and corresponding model diagram (II) in the a) absence and b) presence of sponge medium, respectively. c) Anatomical structure of 731-HN, I) slice of benchmark plane, II) coronal scenography, and III) sagittal scenography.

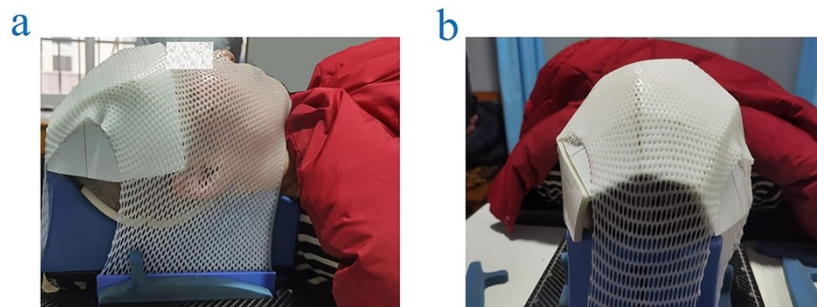


Fig. S3 Digital pictures of GBM patient covered with sponge medium for CT characterization from a) right and b) top directions, respectively.

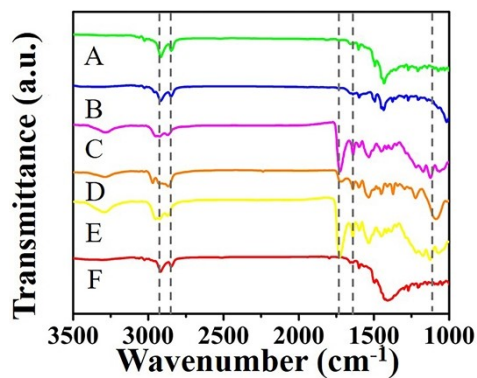


Fig. S4 FT-IR spectra of reference sponge sample A and candidate sponge samples B, C, D, E, and F.

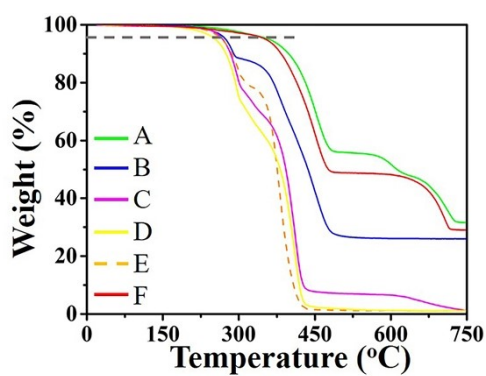


Fig. S5 TGA curves of reference sponge sample A and candidate sponge samples B, C, D, E, and F.

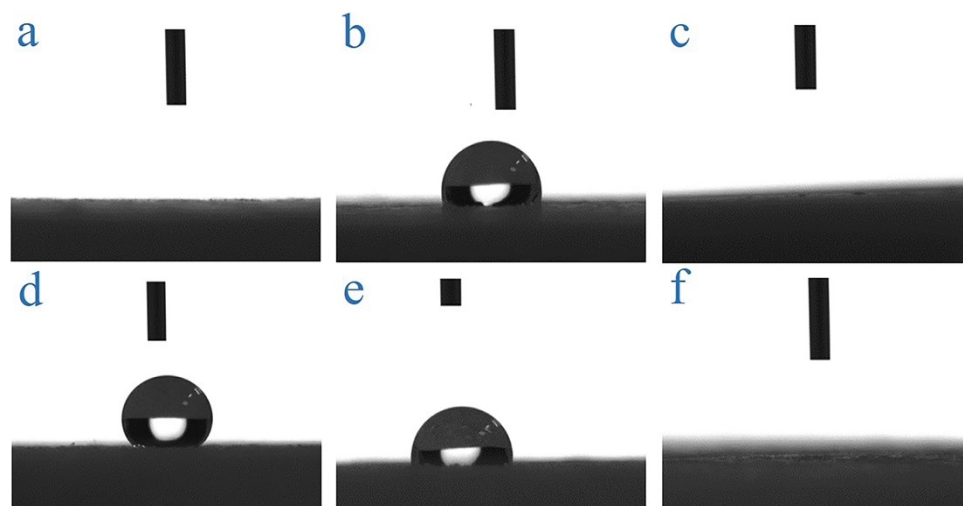


Fig. S6 Contact angles of a) reference sponge sample A, and candidate sponge samples b) B, c) C, d) D, e) E and f) F, respectively.

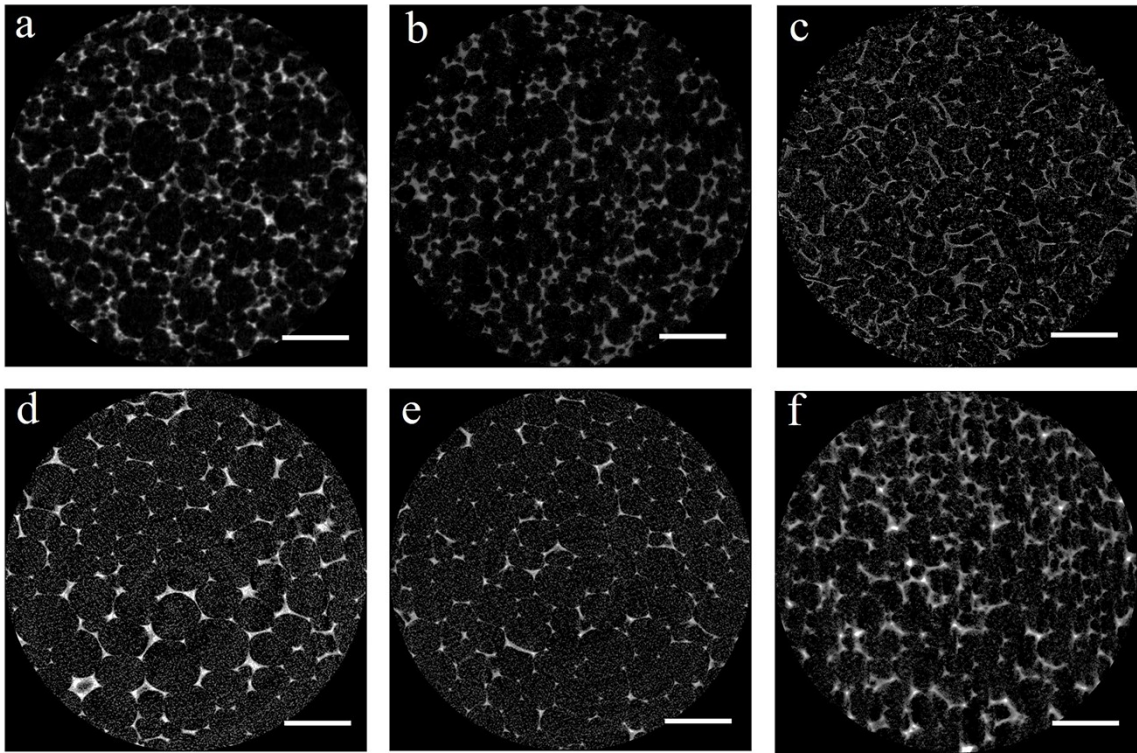


Fig. S7 Re-built 3D micro-CT images of a) reference sponge sample A, and candidate sponge samples b) B, c) C, d) D, e) E, and f) F, respectively. The scale bar is 500 μm .