

**Macrophage membrane-modified targeted phase-change
nanoparticles for multimodal imaging of experimental autoimmune
myocarditis**

Dan Yin PhD¹²³⁴⁵, Min Zheng PhD²³⁴⁵, Qin Zhang PhD⁶, Mi Li PhD²³⁴⁵, Ping Xiang PhD²³⁴⁵, Jie Tian PhD^{2345*}

1 Department of Ultrasound, Children's Hospital of Chongqing Medical University, Chongqing, China, 2 Ministry of Education Key Laboratory of Child Development and Disorders, Chongqing, China, 3 National Clinical Research Center for Child Health and Disorders, Chongqing, China, 4 Department of cardiology, Children's Hospital of Chongqing Medical University, Chongqing, China, 5 Chongqing Key Laboratory of Pediatrics, Chongqing, China, 6 Department of Radiology, Chongqing Hospital of Traditional Chinese Medicine, Chongqing 400021, China

Corresponding author' Information

Corresponding author: Prof. Jie Tian

Children's Hospital of Chongqing Medical University,

Zhongshan Er Road, No.136, Yuzhong District,

Chongqing 400014, China

Email: jietian@cqmu.edu.cn

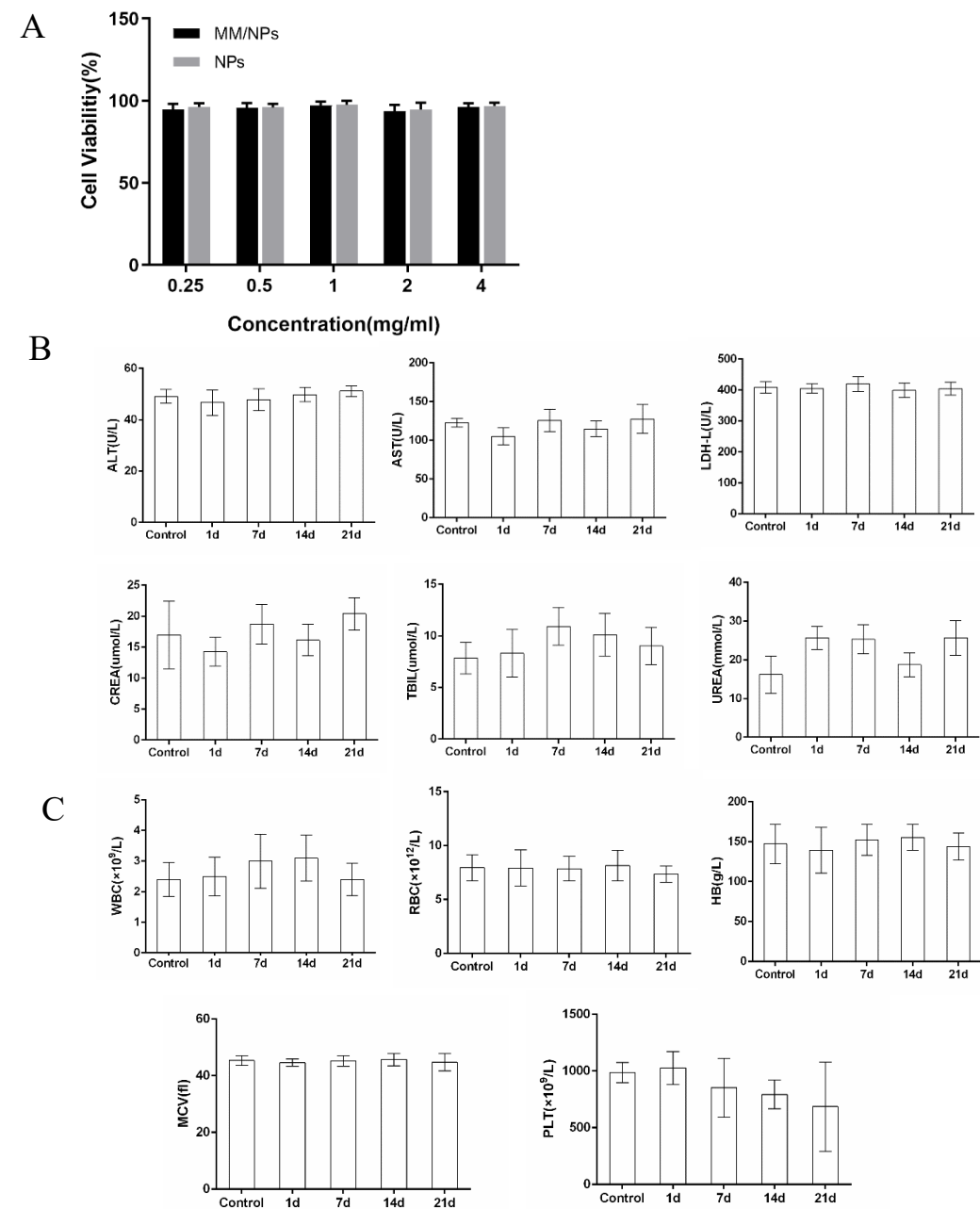
List of Supplementary Figures and Tables

Supplementary Figure1. Toxicity evaluation of MM/NPs in vitro and in vivo.

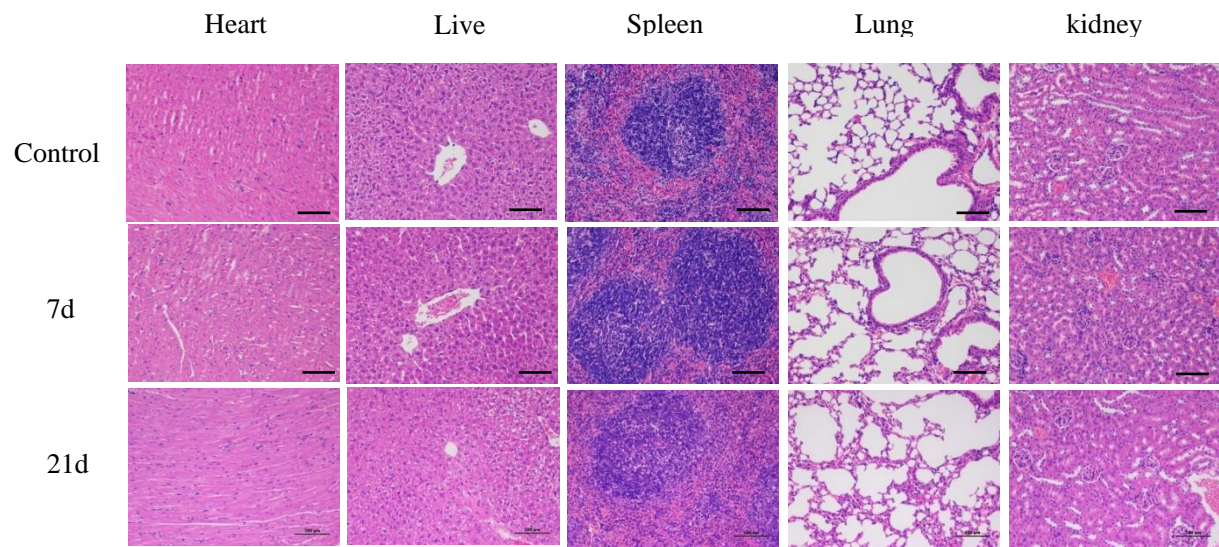
Supplementary Figure2. The standard curve was made according to the concentration and O.D. of the standard.

Table1. Body weight and heart weight of two groups

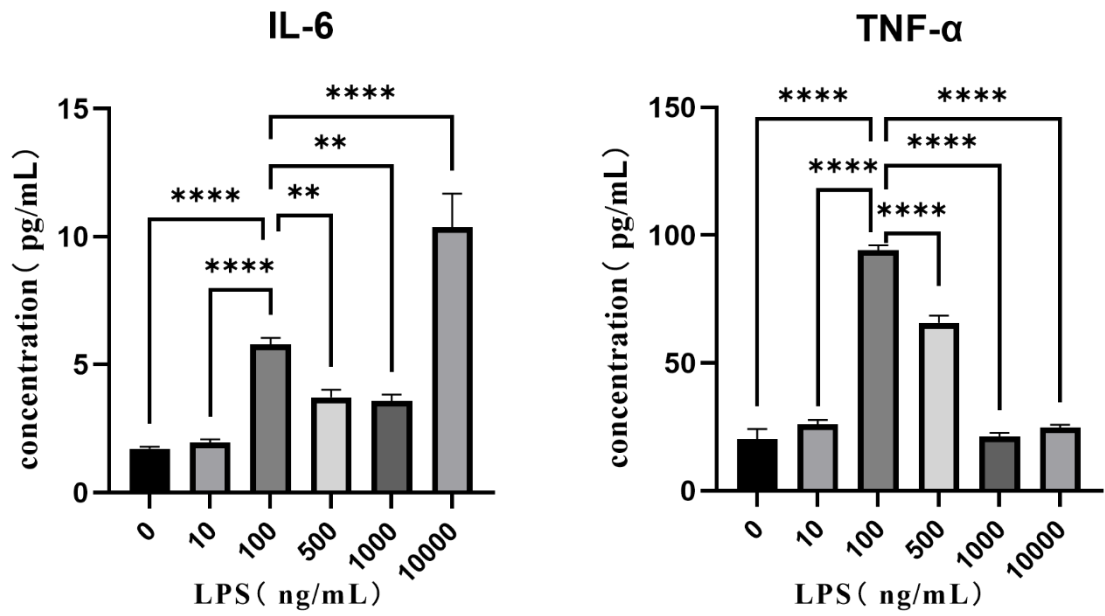
Supplementary information Figure1. Toxicity evaluation of MM/NPs. A) Cell viability of H9C2 cells after co-incubation with different concentrations of NPs and MM/NPs(n=6). B) The routine blood indexes in the control group (intravenous injection saline) and the experimental groups (1, 7, 14d, 21d intravenous injection of MM/NPs) (n = 3). C) Blood biochemical indexes analysis from the control group and the experimental groups at 1, 7, 14, and 21d post intravenous injection of MM/NPs (n = 3). D) HE staining of major organs from the control group and experimental groups after 7d and 21d of intravenous administration with MM/NPs ($\times 200$ magnification, scale bar: 200 μm)



D



Supplementary information Figure2. The standard curve was made according to the concentration and O.D. of the standard



Supplementary information Table1. Body weight and heart weight of two groups

	HW(mg)	BW b(g)	BW s(g)	BW change(%)	HW/BW(mg/g)
Control	89.04 ± 0.99	18.61 ± 0.29	22.34 ± 0.42	20.47±2.09	3.99±0.08
EAM	110.18 ± 1.50****	18.38 ± 0.21	18.51 ± 0.23****	3.84±0.76****	5.96±0.10****

BW b: Basal body weight, BW s: Body weight at sacrifice, HW: heart weight (*P< 0.05; **P<0.01; ***P<0.005; ****P < 0.001)