

Supporting Information

Customized thermoplastic polyhydroxyurethanes synthesized from ene-containing cyclic carbonate, dithiol and diamine: Design, mechanical property and application in adhesive

Weikun Xu,^a Yutong Ding,^a Shibin You,^a Cheng Chao,^b Bozhen Wu^{*a} and Feng Chen^{*a}

^a College of Materials Science and Engineering, Zhejiang University of Technology, Hangzhou 310014, P R China.

^b Zhejiang Zhongli Synthetic Material Technology Co., Ltd. Pinghu 314200, China.

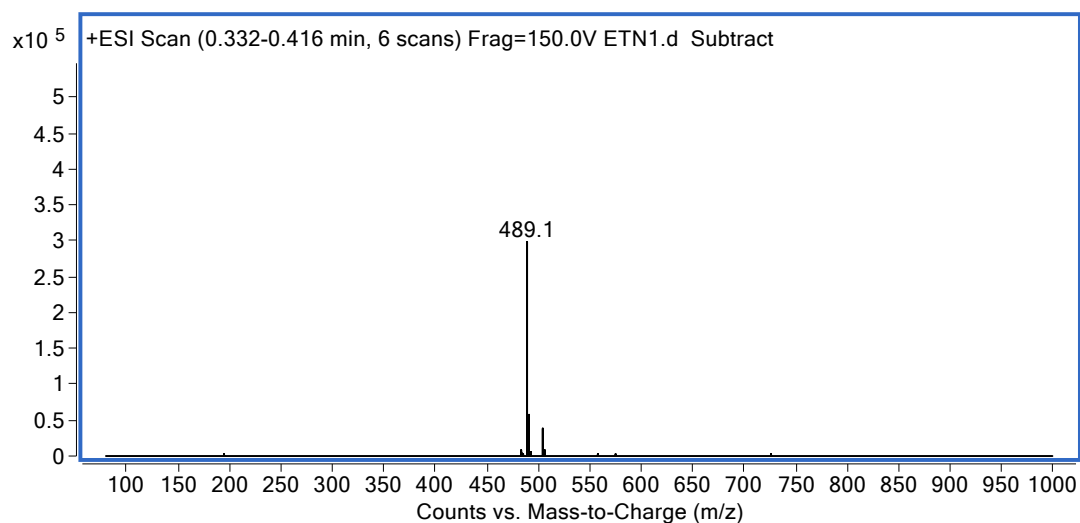


Fig. S1 . ESI-MS spectrum of CC-1

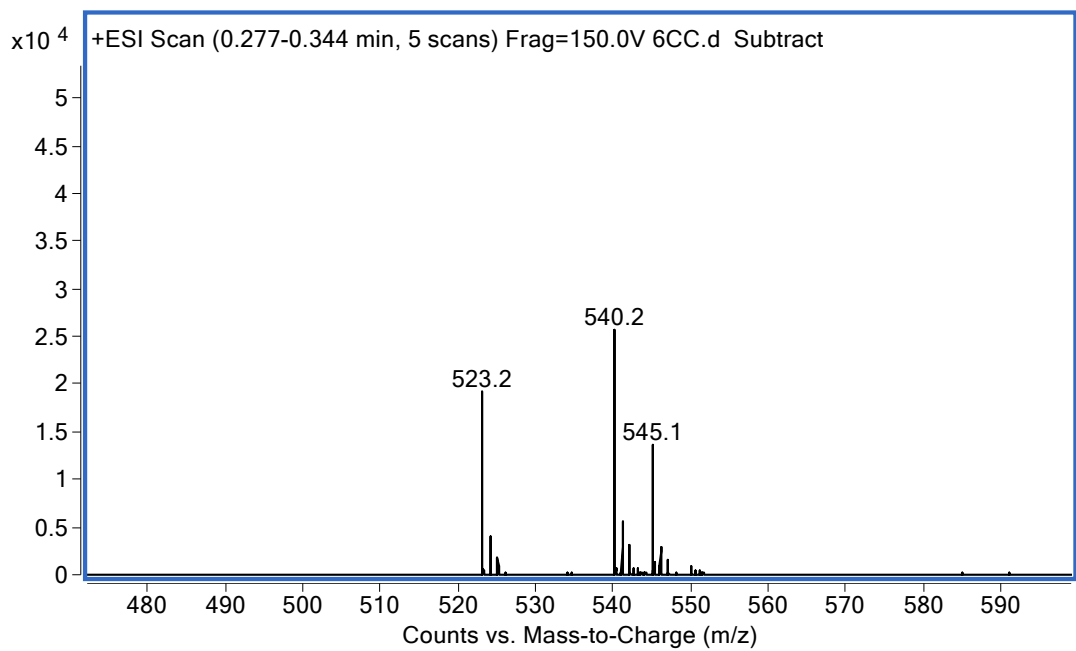


Fig. S2 ESI-MS spectrum of CC-2

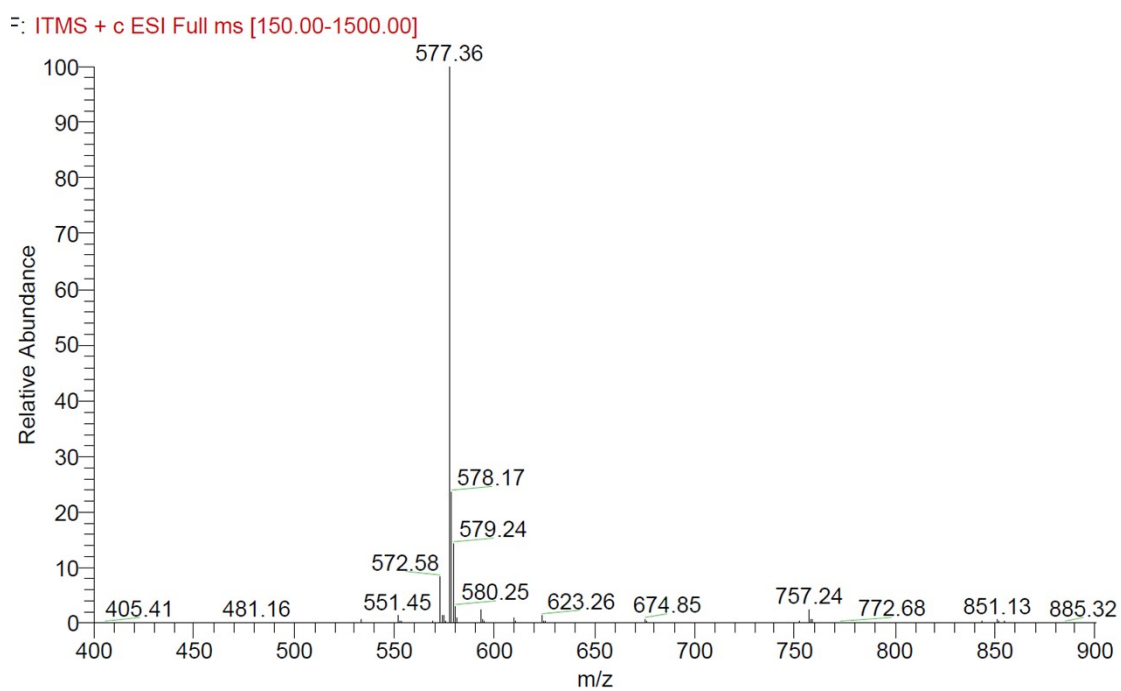


Fig. S3 ESI-MS spectrum of CC-3

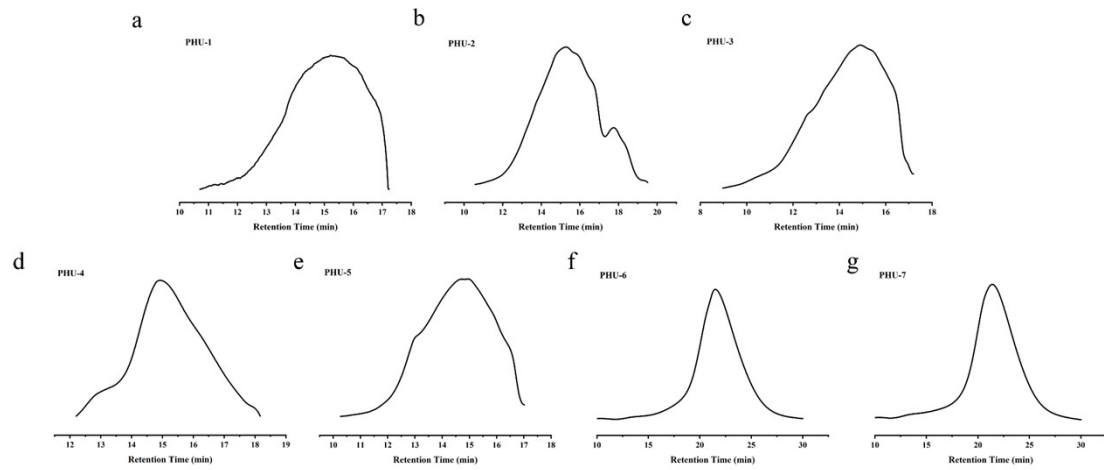


Fig. S4 GPC spectra of PHUs

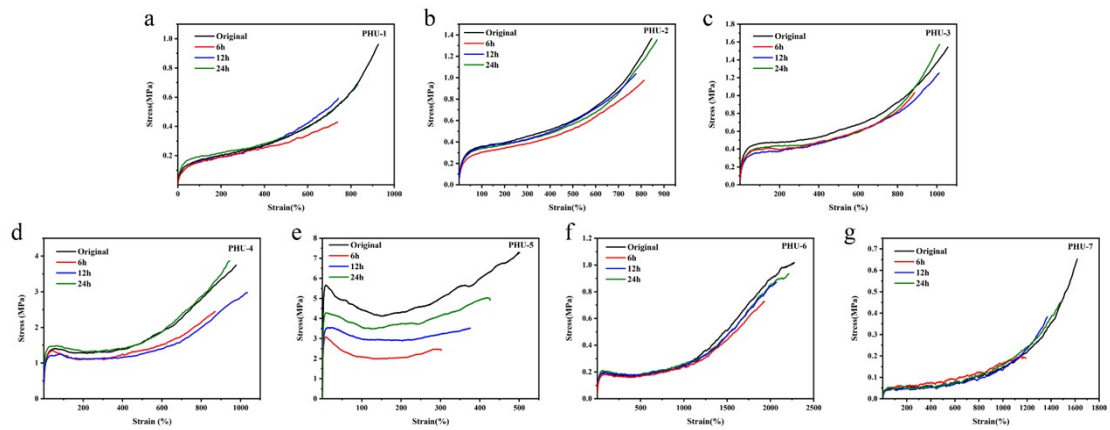


Fig. S5 Representative stress-strain curves of original PHUs and healing PHUs versus different time

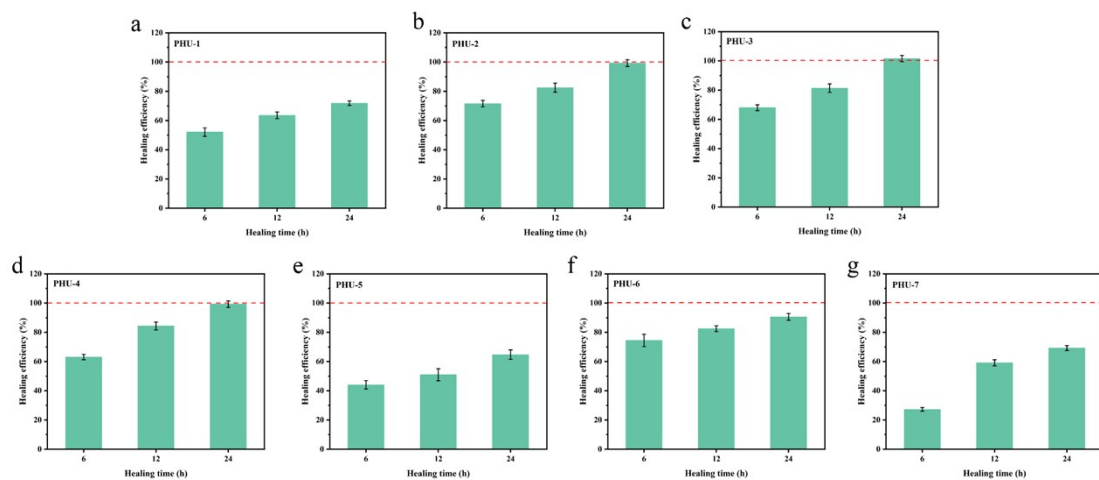


Fig. S6 Healing efficiency of PHUs versus different times