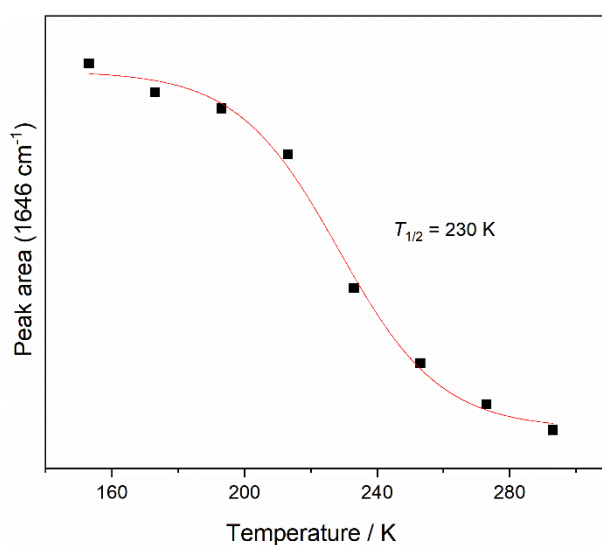


## Supplementary Information

### Reversible Thermally Induced Spin Crossover in the Myoglobin-Nitrito Adduct Directly Monitored by Resonance Raman Spectroscopy

Vasiliki K. Valiantj,<sup>a</sup> Charalampos Tselios<sup>a,b</sup> and Eftychia Pinakoulaki<sup>\*a</sup>



**Figure S1:** Plot of the 1646 cm<sup>-1</sup> peak area ( $\nu_{10}$  of 6cLS species) versus temperature. The sigmoidal fitting of the data indicates that spin crossover occurs with a transition temperature  $T_{1/2} = 230$  K.