

Supplementary data

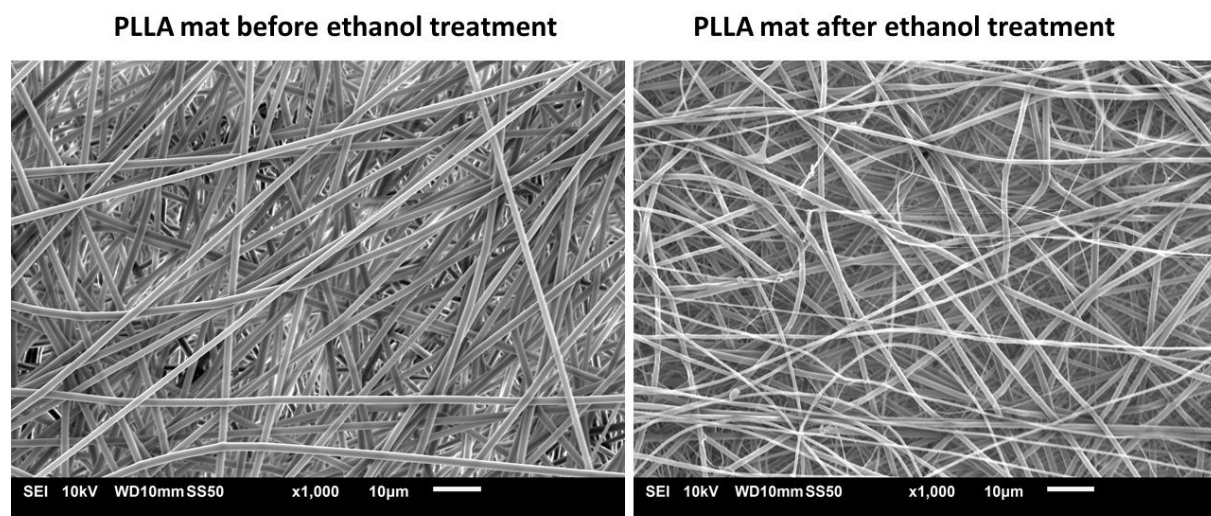


Fig. A. SEM images of PLLA mat before and after 70 % ethanol treatment.

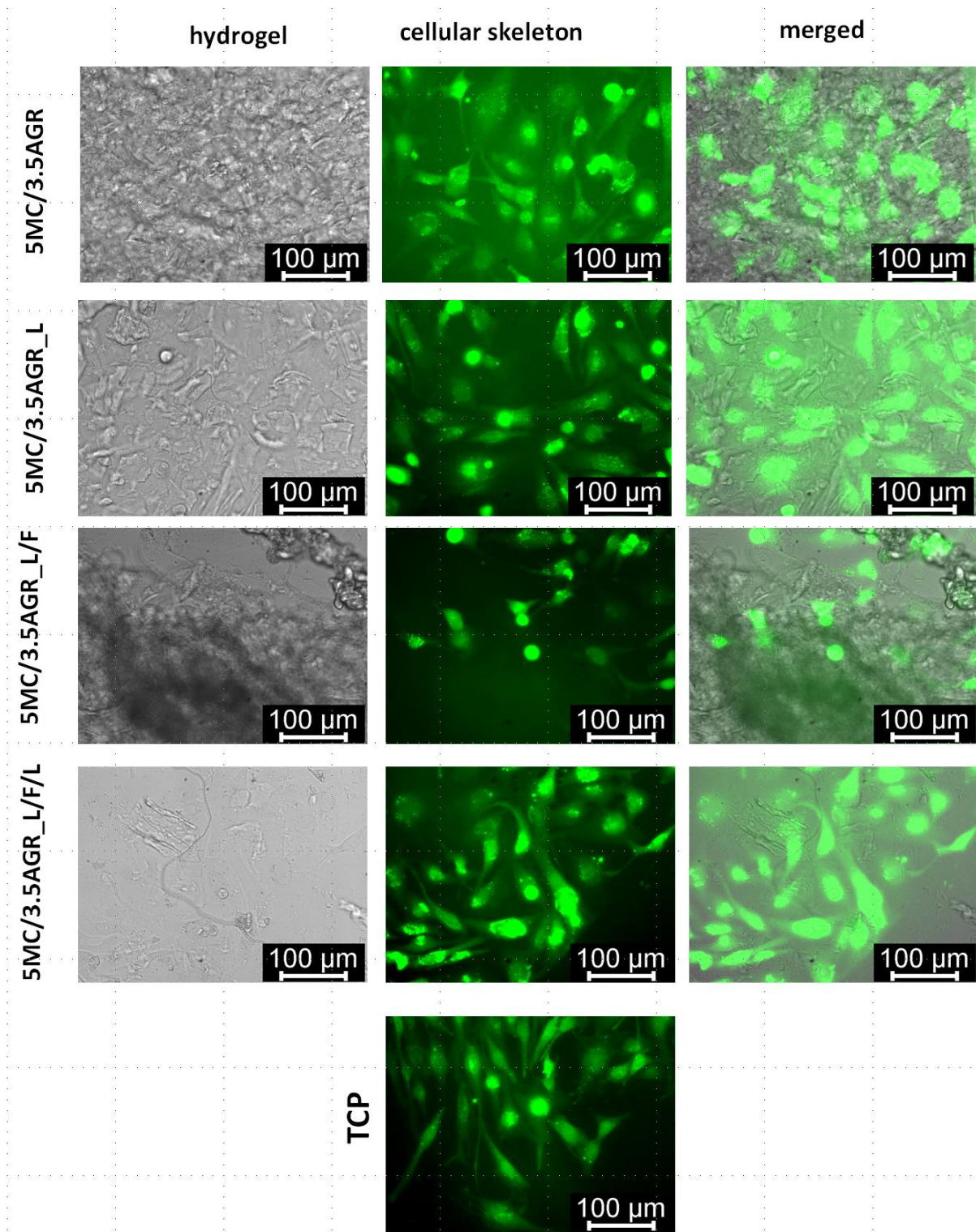


Fig. B. Morphology of the hydrogel (substrate), WG4 skeleton, and merged images of glioma cells seeded on hydrogel at 1 day of culture.

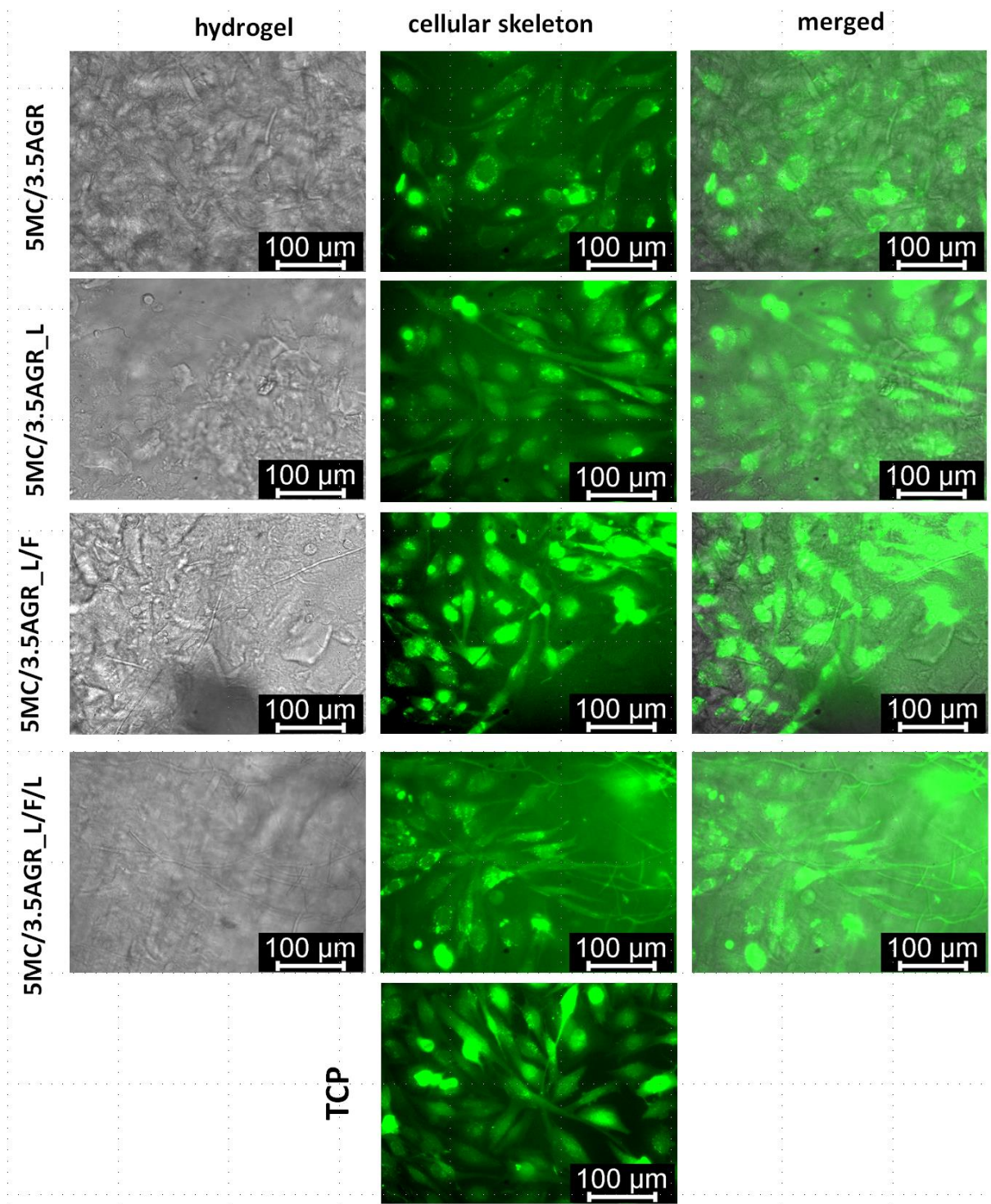


Fig. C. Morphology of the hydrogel (substrate), WG4 skeleton, and merged images of glioma cells seeded on hydrogel at 3 day of culture.