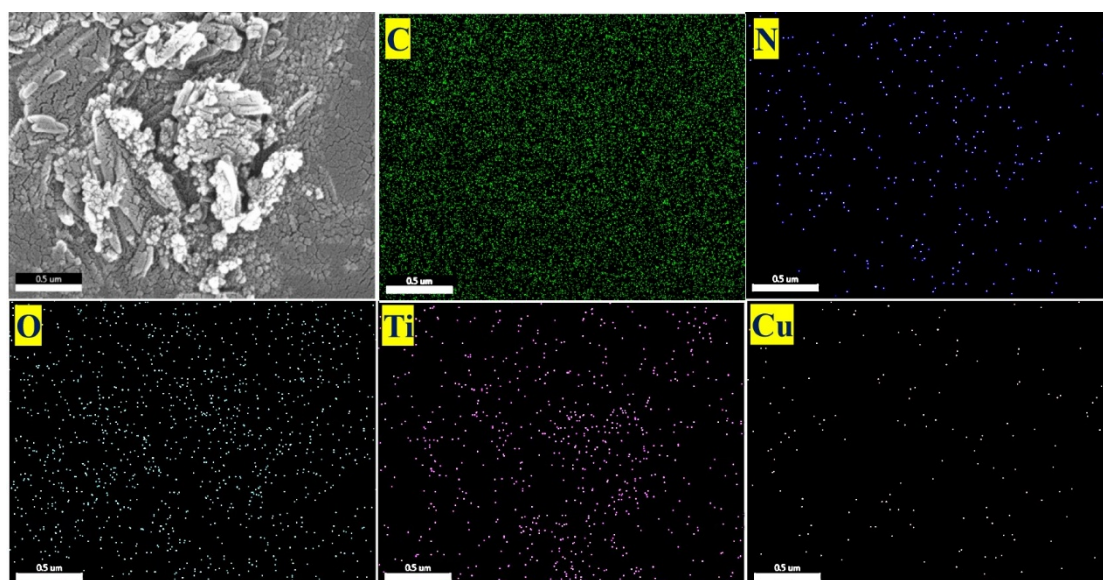
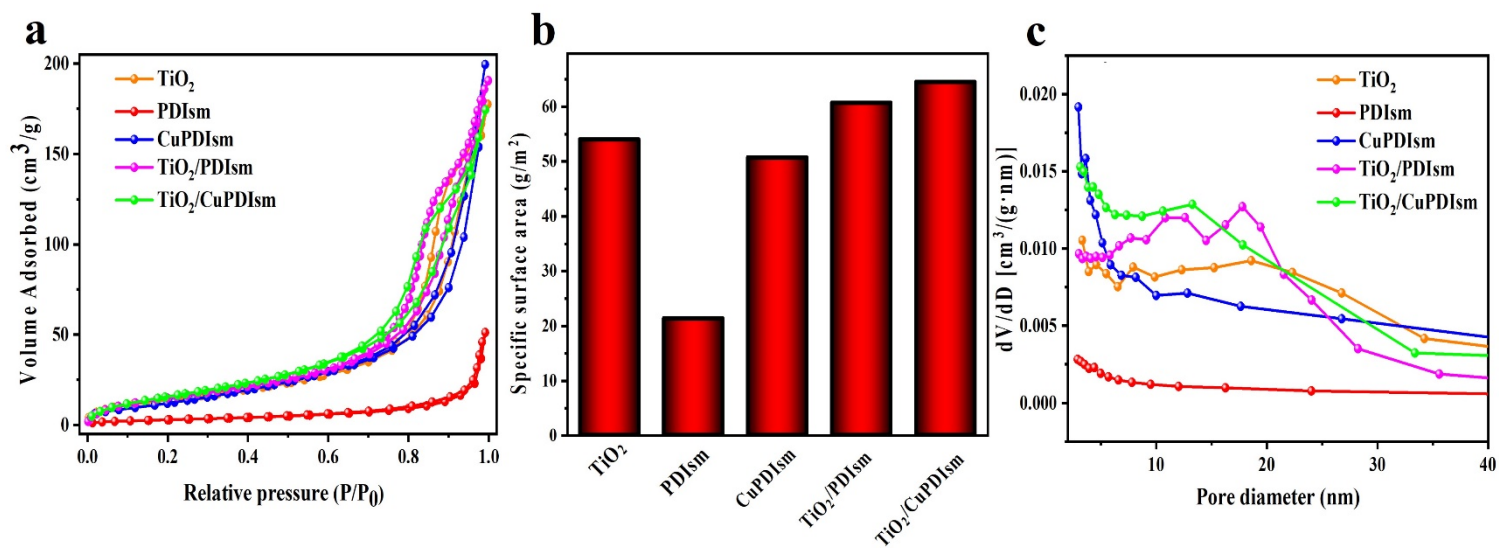


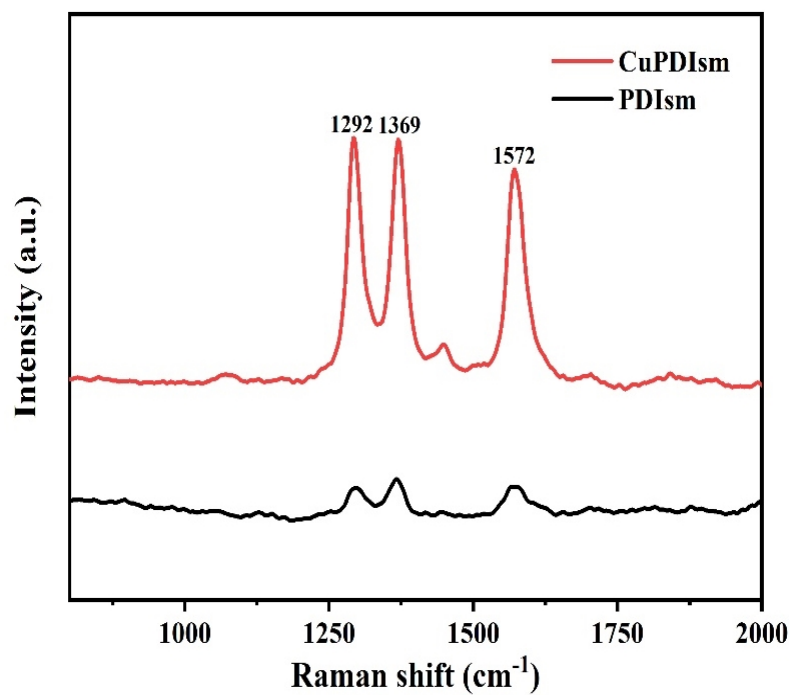
**Fig. S1.** SEM images of TiO<sub>2</sub> (a), PDIsM (b), CuPDIsM (c), TiO<sub>2</sub>/PDIsM (d) and TiO<sub>2</sub>/CuPDIsM



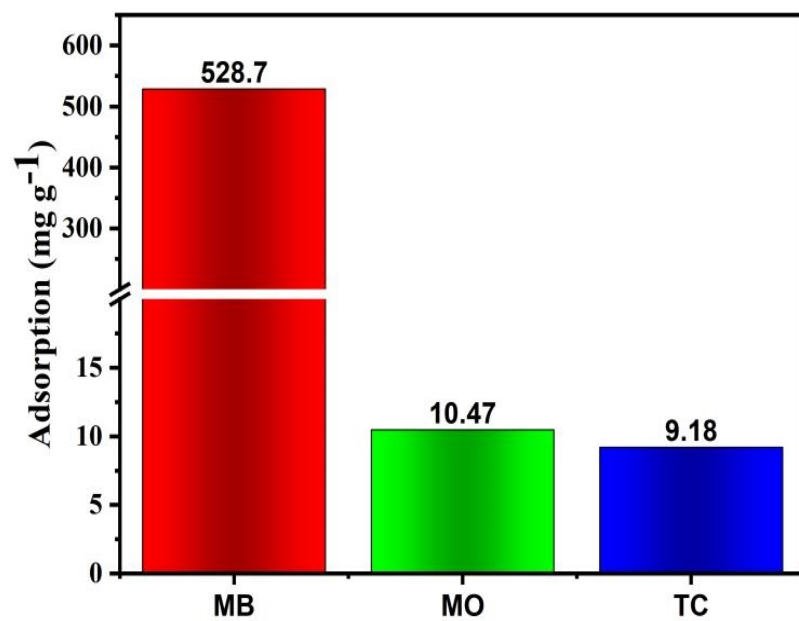
**Fig. S2.** The mapping of TiO<sub>2</sub>/CuPDIsM composite.



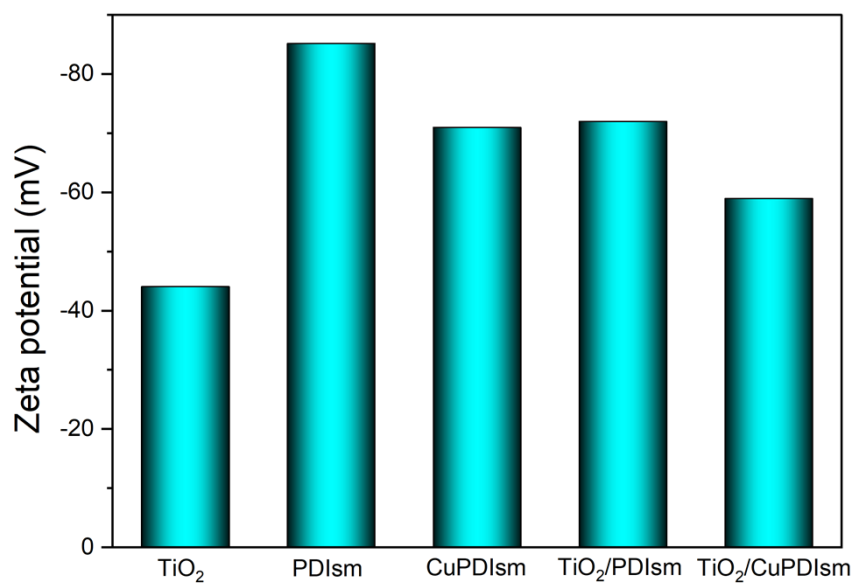
**Fig. S3.** Nitrogen adsorption-desorption isotherm (a), The specific surface area (b) and pore size distribution (c).



**Fig. S4.** Raman spectra of PDIsM and CuPDIsM samples.



**Fig. S5.** The adsorption performance of PDIsm.



**Fig. S6.** Zeta potential of the samples.

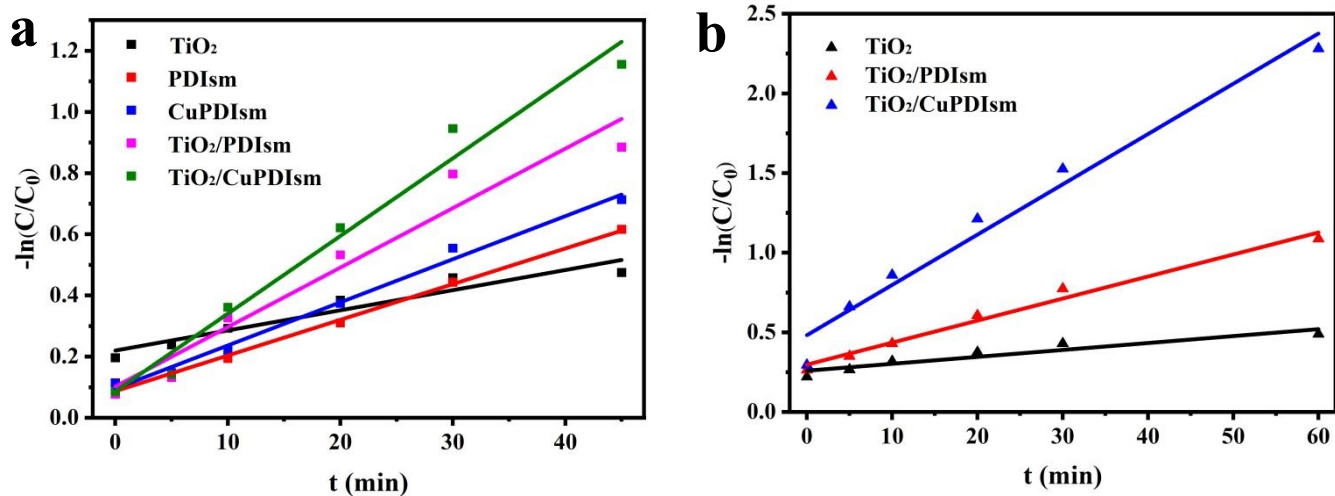


Fig. S7. Quasi-level kinetic modeling of MO (a) and MB (b).

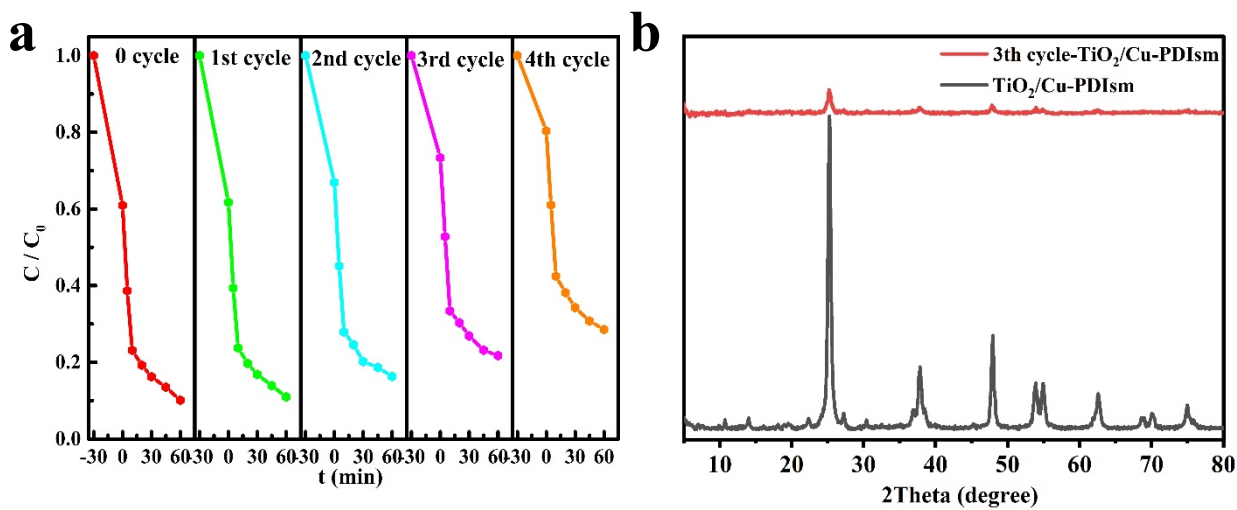


Fig. S8. Degradation of TC for 4 cycles using  $\text{TiO}_2/\text{CuPDIsm}$  (a), XRD patterns of 3th cycle- $\text{TiO}_2/\text{CuPDIsm}$  and  $\text{TiO}_2/\text{CuPDIsm}$  (b).