

Support Information

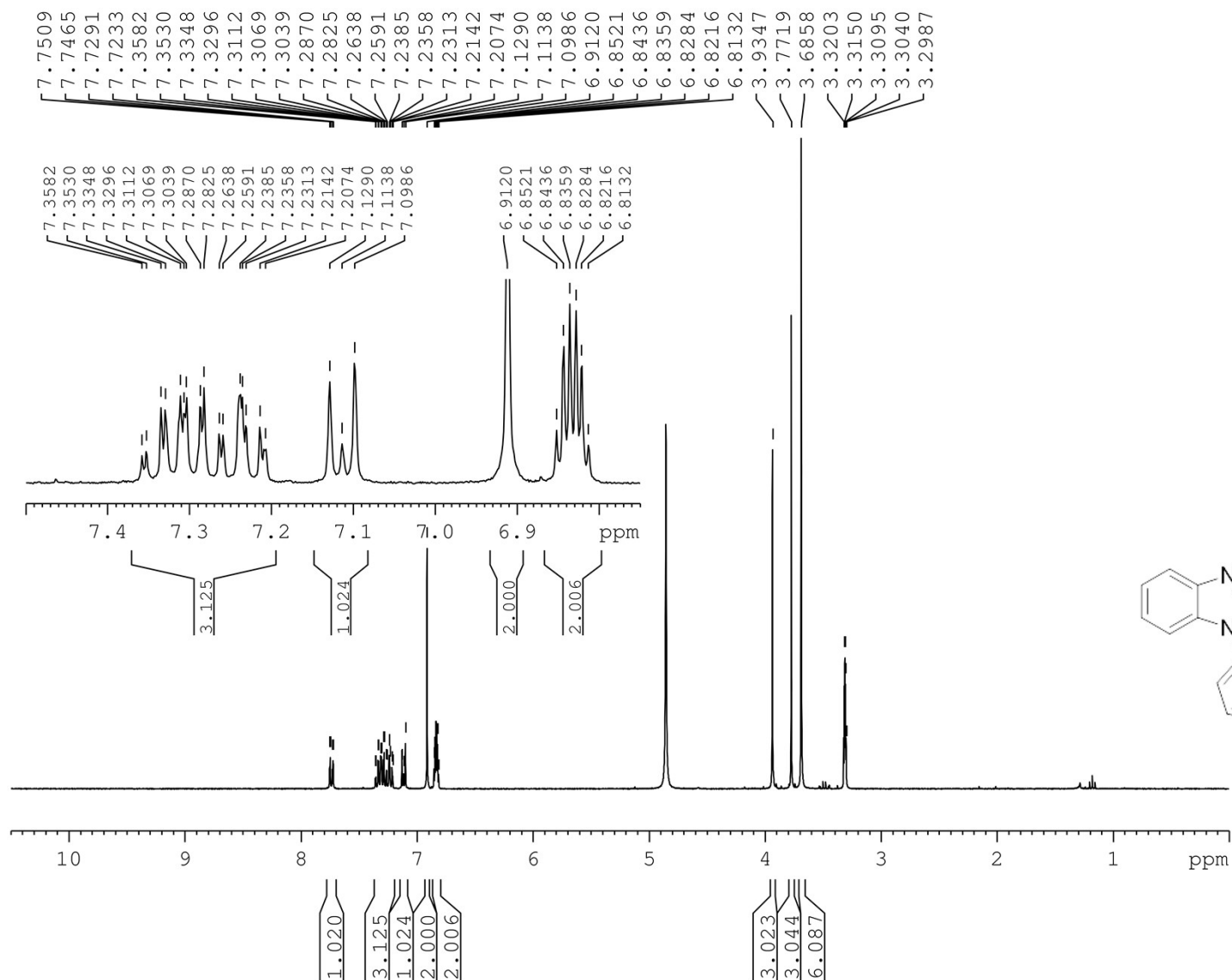
CuI-mediated Synthesis of 1-Aryl-5,6,7-trimethoxybenzimidazoles as Potent Antitubulin Agents

Cong-Min Peng,^{a,#} Shih-Wei Wang,^{b,c,d,#} Yi-Lin Hwang,^a Wen-Chun Sun,^{b,e} Li-Pin Chiu,^{f,g} Yi-Ting Liu,^a Yu-Wei Lai,^{*,h,i} Hsueh-Yun Lee^{*,a,j,k}

Contents:

¹ H NMR Spectra for compounds 4-15	2
¹³ C NMR Spectra for compounds 4-15	14

¹H Spectrum for compound 4

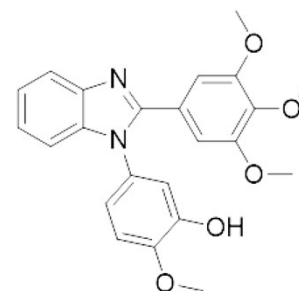


Current Data Parameters
NAME 0415-61-222-2
EXPNO 1
PROCNO 1

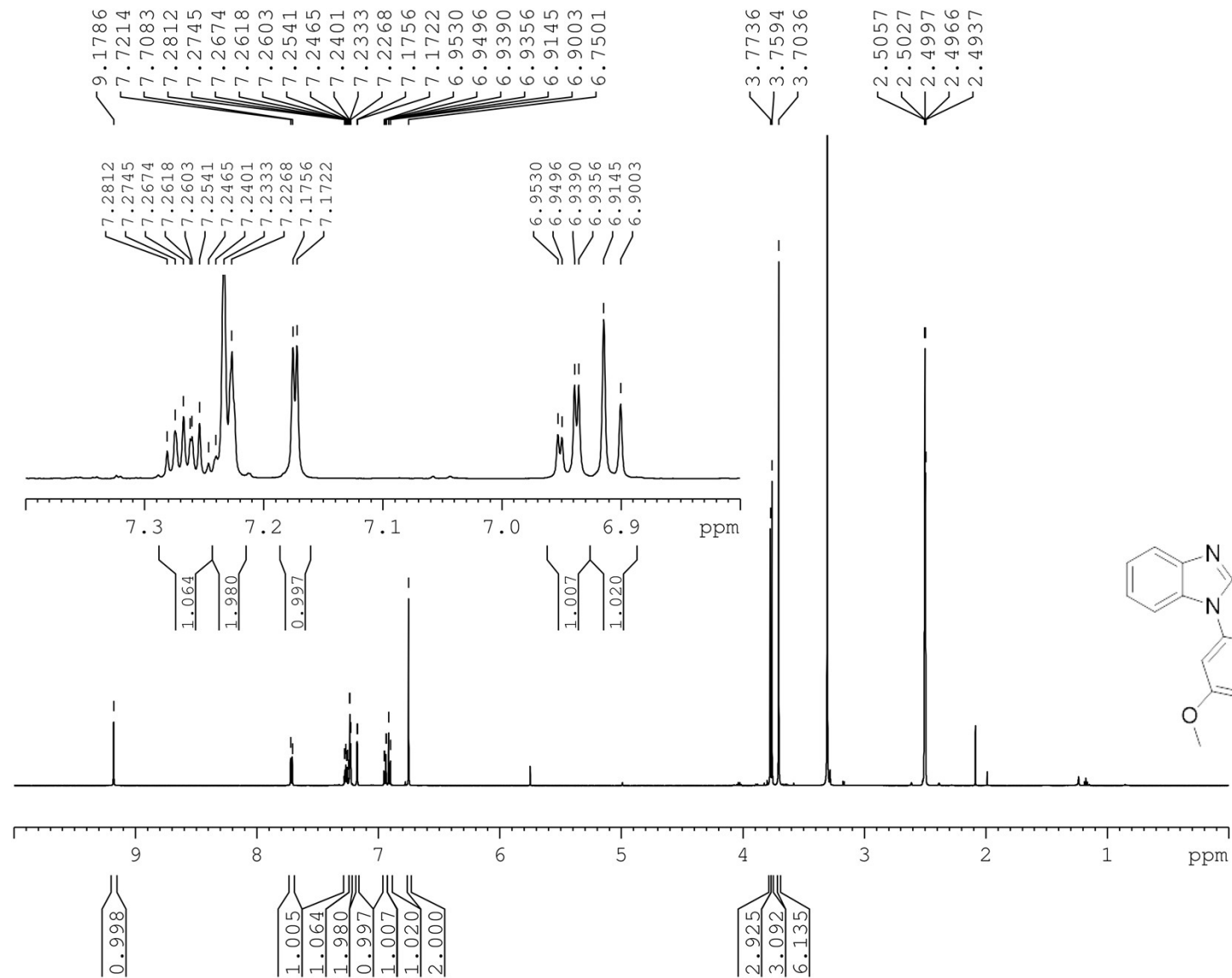
F2 - Acquisition Parameters
Date_ 20190415
Time 10.32
INSTRUM FOURIER300
PROBHD 5 mm DUL 13C-1
PULPROG zg30
TD 32768
SOLVENT MeOD
NS 16
DS 0
SWH 6103.516 Hz
FIDRES 0.186265 Hz
AQ 2.6843545 sec
RG 32
DW 81.920 usec
DE 6.50 usec
TE 300.0 K
D1 2.00000000 sec
TD0 1

===== CHANNEL f1 =====
SFO1 300.1818011 MHz
NUC1 1H
P1 15.00 usec
PLW1 5.61999989 W

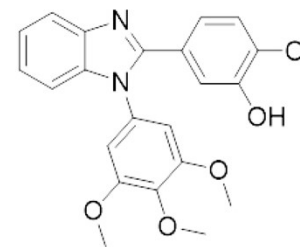
F2 - Processing parameters
SI 16384
SF 300.1800100 MHz
WDW no
SSB 0
LB 0 Hz
GB 0
PC 1.00



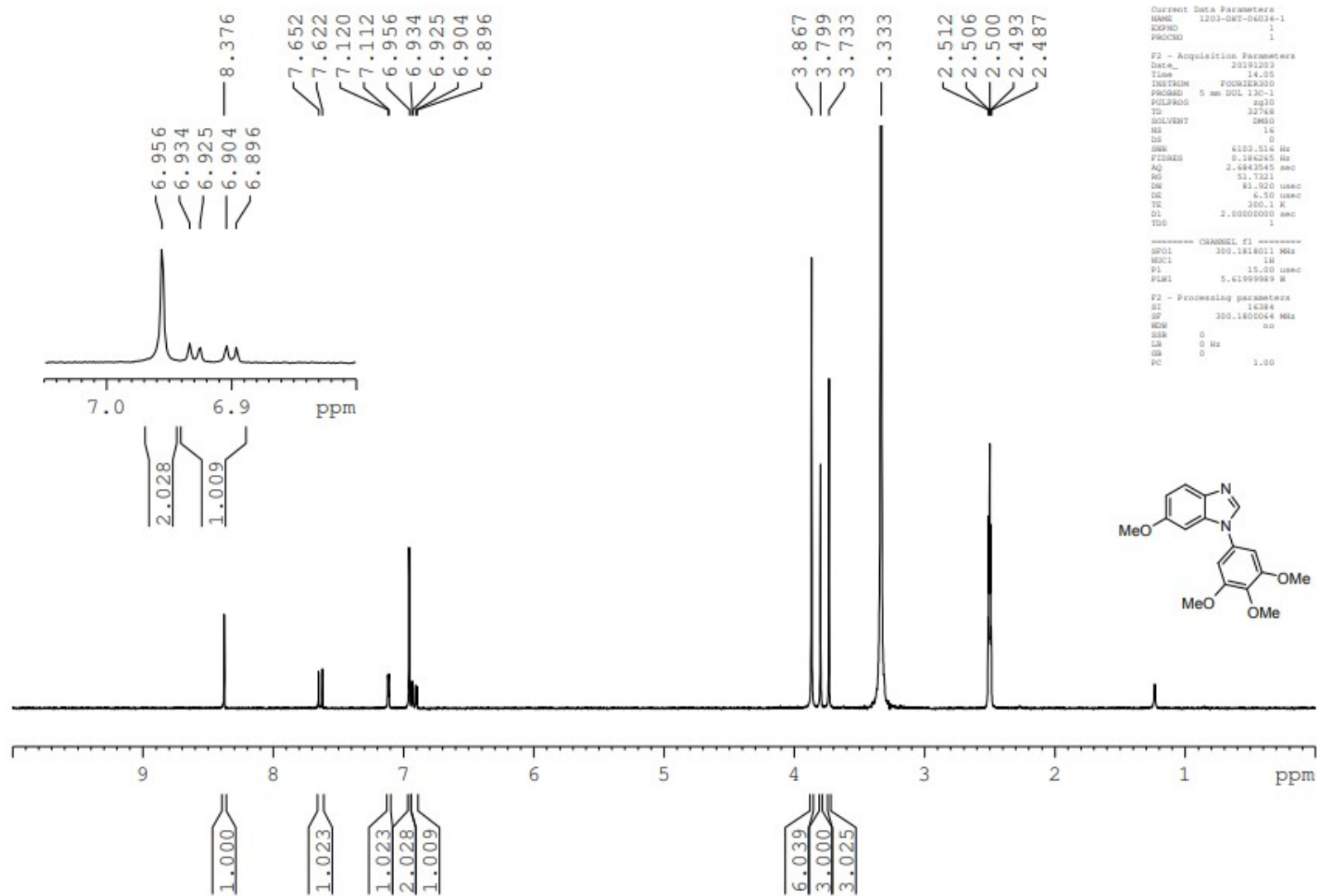
¹H Spectrum for compound 5



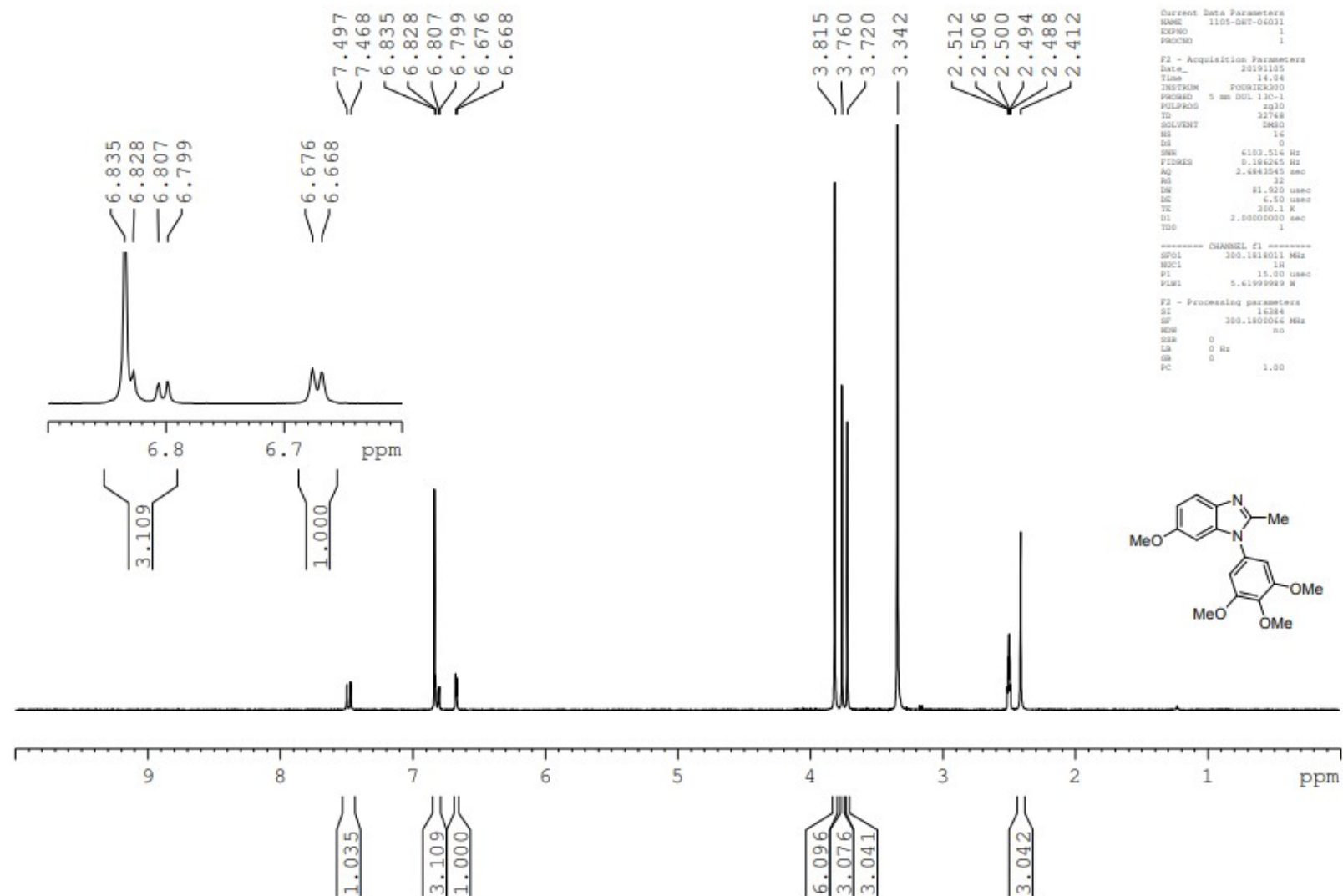
Current Data Parameters
NAME 0705-61-161-600
EXPNO 1
PROCNO 1
F2 - Processing parameters
SI 65536
SF 599.8294387 MHz
WDW EM
SSB 0
LB 0.30 Hz
GB 0
PC 1.00



¹H Spectrum for compound 6



¹H Spectrum for compound 7



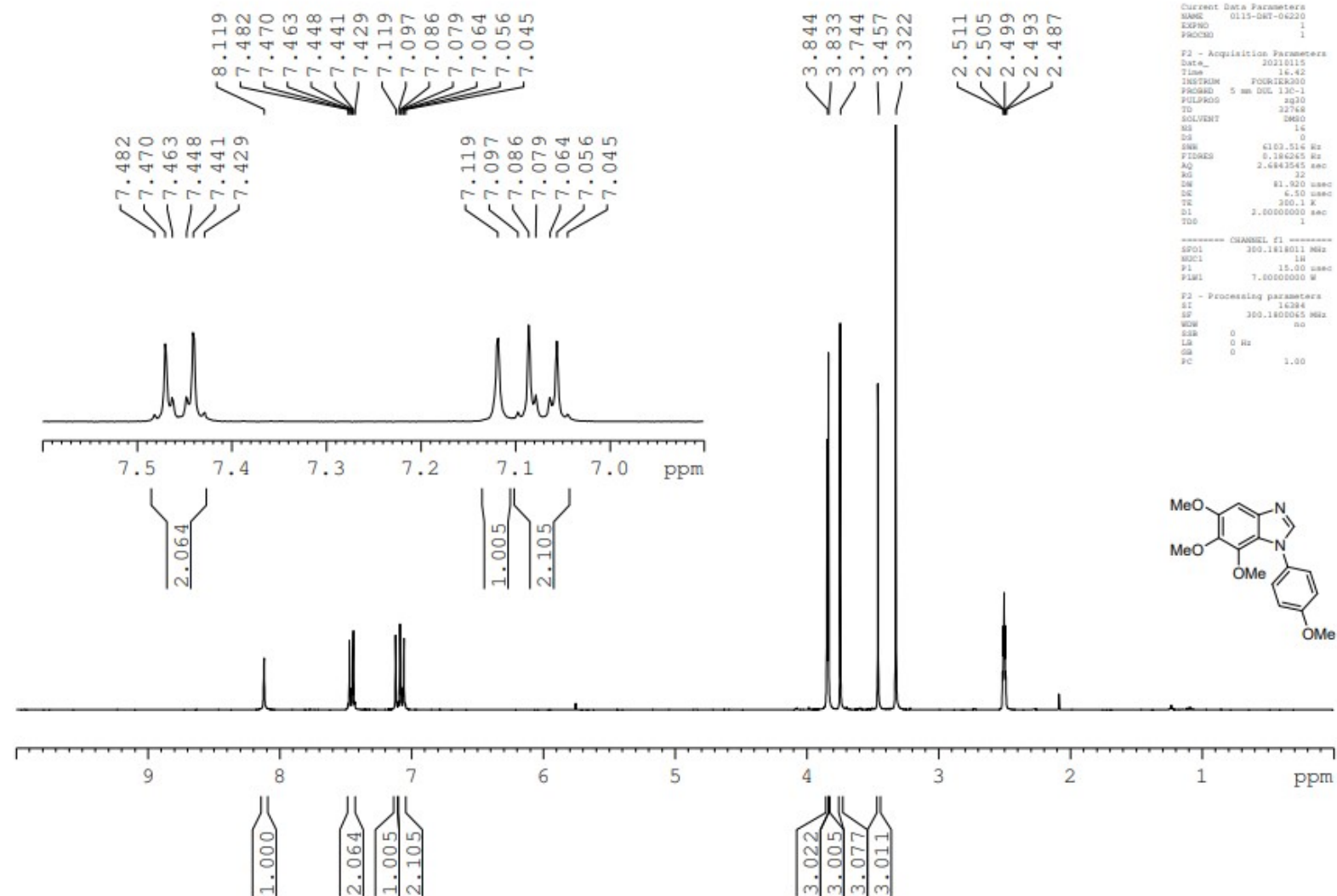
Current Data Parameters
NAME 1105-DAT-04011
EXPNO 1
PROCNO 1

F2 - Acquisition Parameters
Date_ 20191105
Time 14.04
INSTRUM FOURIER300
PROBHD 5 mm BBO 125-1
PULPROG zg30
TD 32768
SOLVENT DMSO
NS 16
DS 0
SWH 6103.514 Hz
FIDRES 0.194245 Hz
AQ 2.4842545 sec
RG 32
OR 81.920 usec
DE 6.50 usec
TE 300.1 K
D1 2.00000000 sec
TD0 1

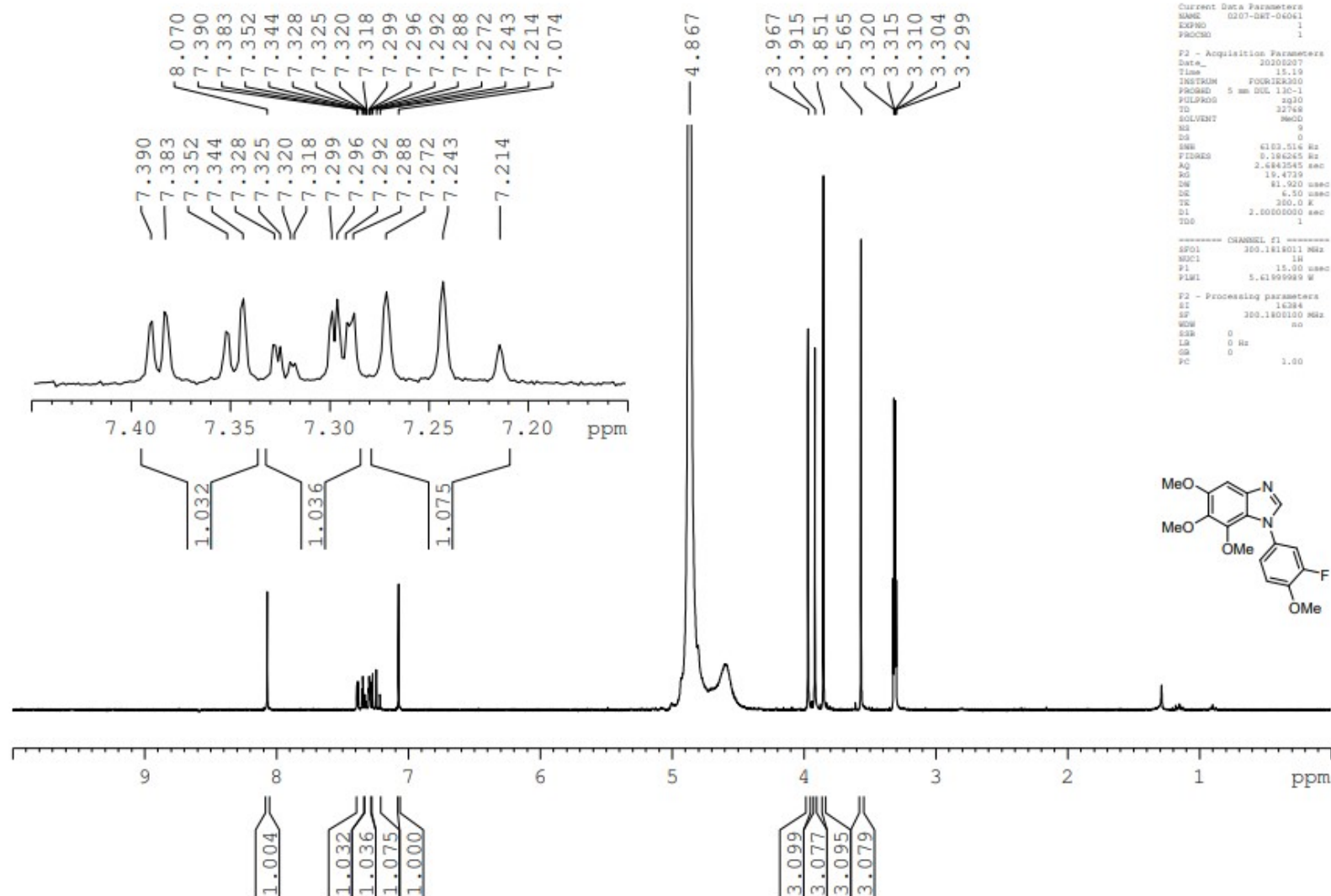
===== CHANNEL F1 =====
SFO1 300.1818011 MHz
NUC1 1H
P1 15.00 usec
PLW1 5.6199989 W

F2 - Processing parameters
SI 32768
SF 300.1805044 MHz
WDW no
SSR 0
LB 0 Hz
GB 0
PC 1.00

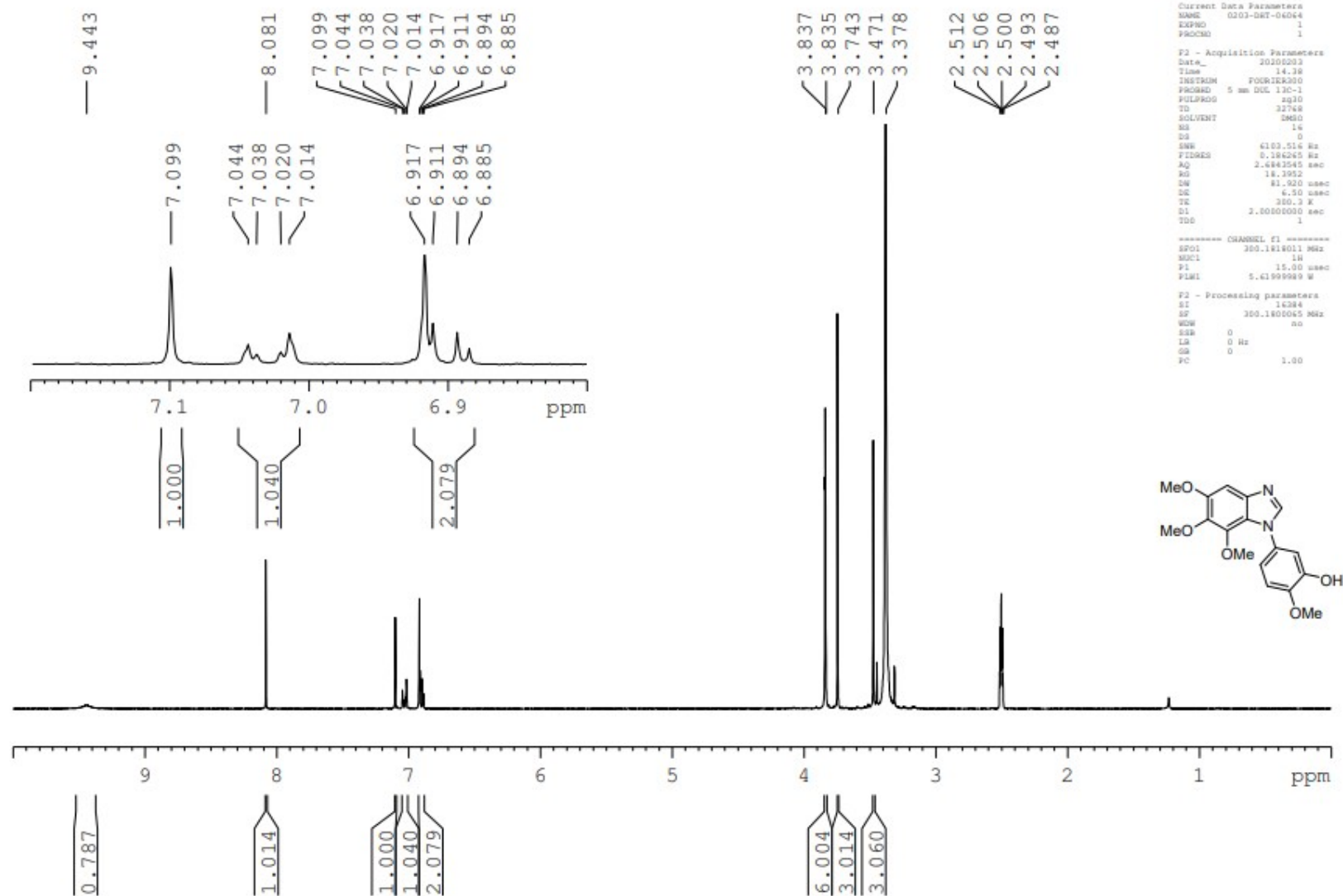
¹H Spectrum for compound 8



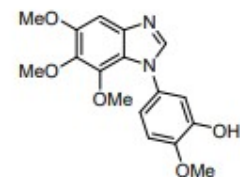
¹H Spectrum for compound 9



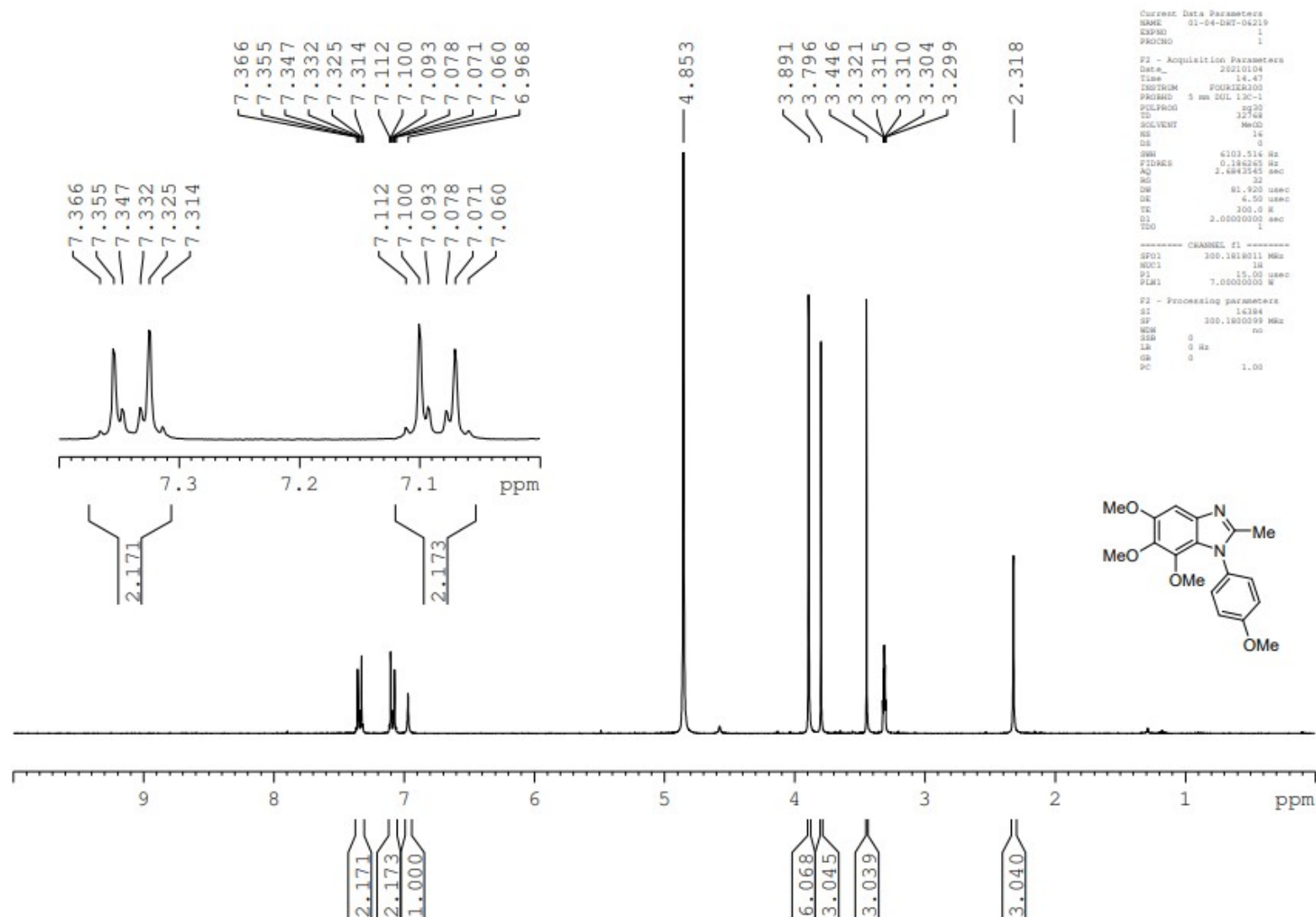
¹H Spectrum for compound 10



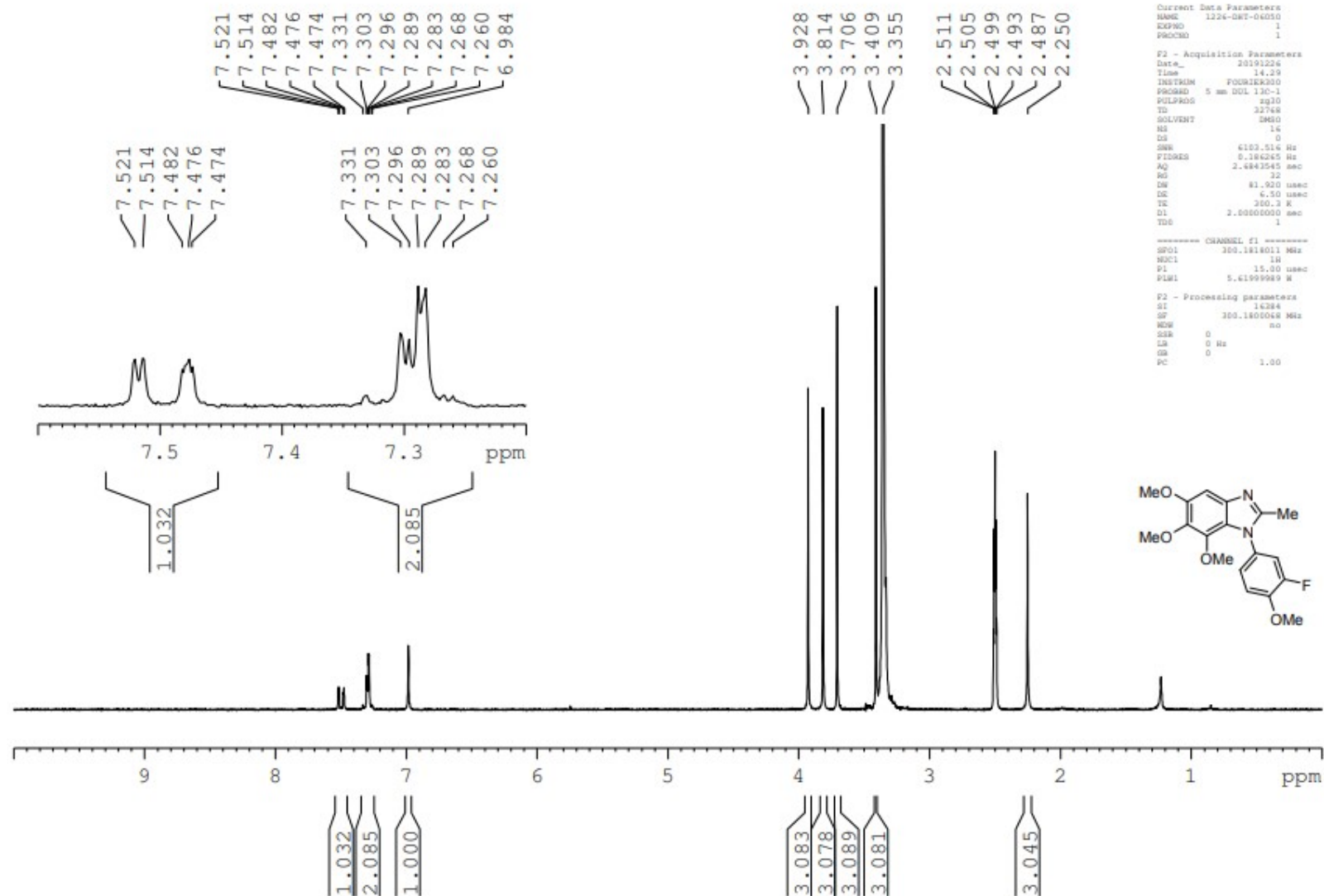
Current Data Parameters
 NAME 0203-DAT-04044
 EXPNO 1
 PROCNO 1
 F2 - Acquisition Parameters
 Date_ 20200203
 Time 14.38
 INSTRUM FOURIER300
 PROGRAM 5 mm DUL 130-1
 PULPROG zg30
 TD 32768
 SFO 300.136055
 SOLVENT DMSO
 NS 16
 DS 0
 SWH 6103.514 Hz
 FIDRES 0.184545 Hz
 AQ 2.6843545 sec
 RG 18.3952
 CW 81.820 usec
 DE 6.50 usec
 TE 300.2 K
 D1 2.00000000 sec
 TDS 1
 ===== CHANNEL F1 =====
 SFO1 300.136055 MHz
 NUC1 1H
 P1 15.00 usec
 PL1 5.61999989 W
 F2 - Processing parameters
 SI 16384
 SF 300.136055 MHz
 WDW no
 SSB 0
 LB 0 Hz
 GB 0
 PC 1.00



¹H Spectrum for compound 11



¹H Spectrum for compound 12



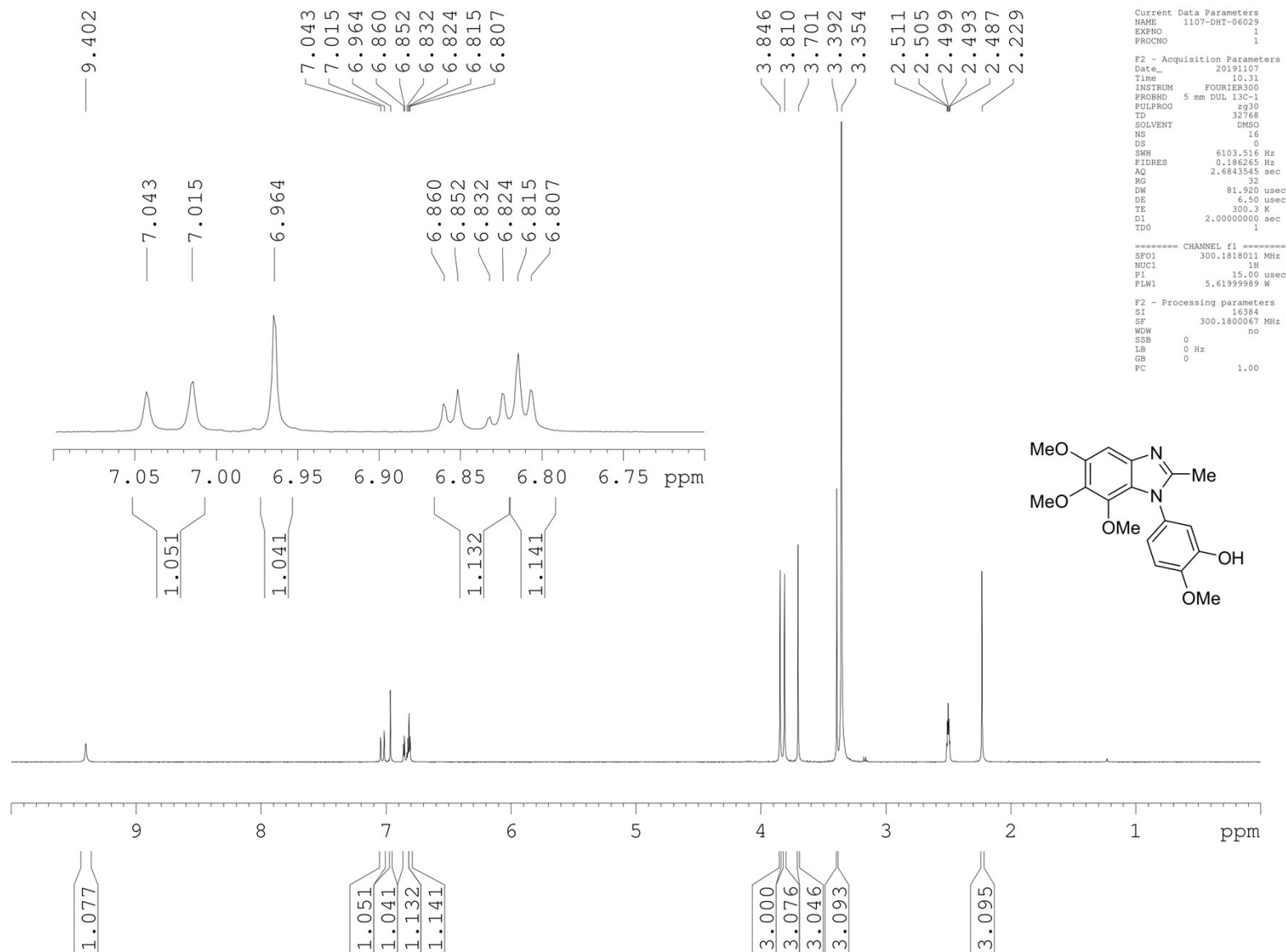
Current Data Parameters
NAME 1224-087-04050
EXPNO 1
PROCNO 1

F2 - Acquisition Parameters
Date_ 20191226
Time 14.29
INSTRUM F001KX300
PROBHD 5 mm DUL 130-1
PULPROG zg30
TD 32768
SOLVENT DMF0
NS 16
DS 0
SWH 6102.516 Hz
FIDRES 0.186245 Hz
AQ 2.4843545 sec
RG 32
DW 81.920 usec
DE 4.50 usec
TE 300.2 K
D1 2.00000000 sec
D0 1

===== CHANNEL f1 =====
NUC1 13C
P1 15.00 usec
PLW1 5.61999989 M

F2 - Processing parameters
SI 16384
SF 300.1400048 MHz
WDW no
SSB 0
LB 0 Hz
GB 0
PC 1.00

¹H Spectrum for compound 13



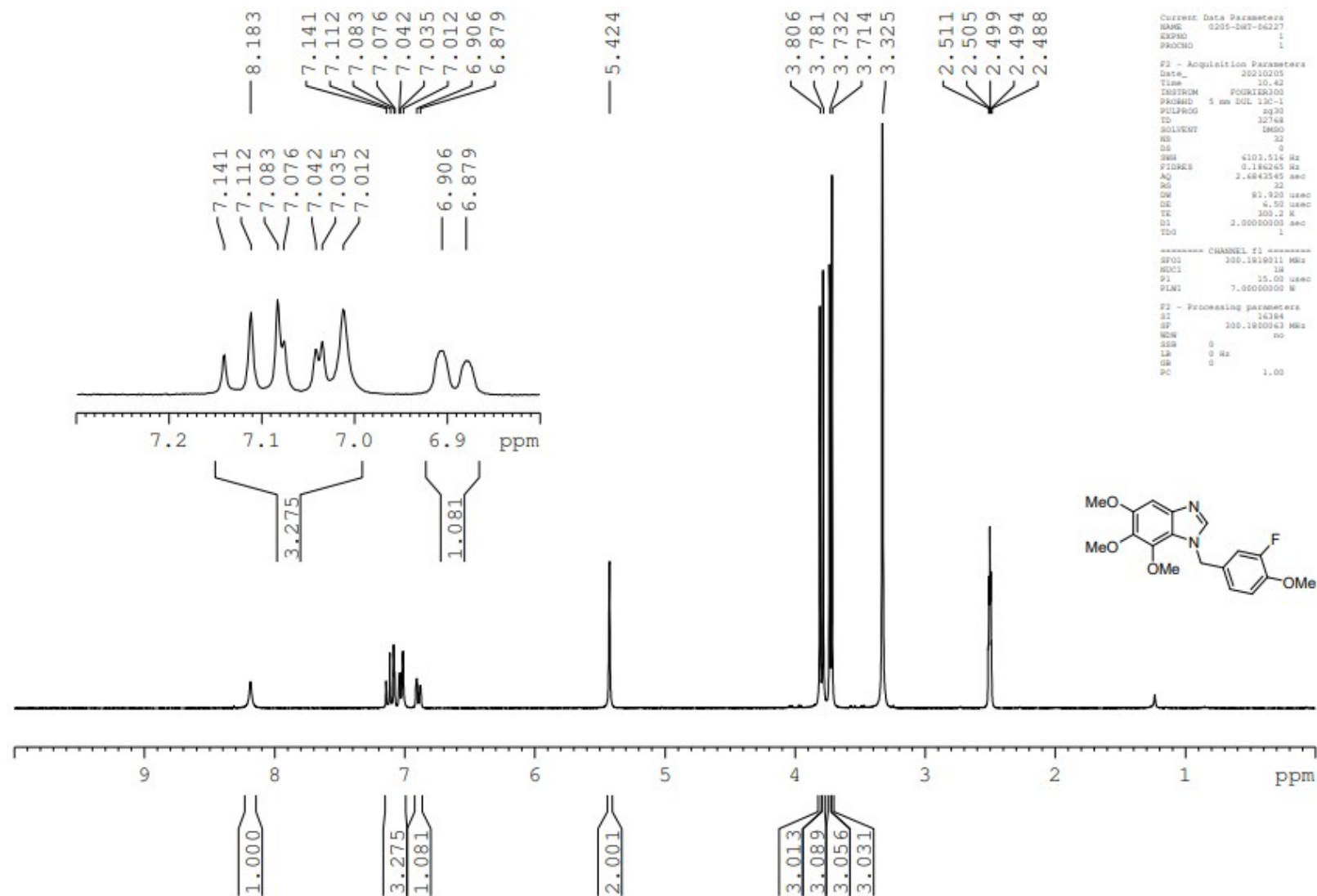
Current Data Parameters
NAME 1107-DHT-06029
EXPNO 1
PROCNO 1

F2 - Acquisition Parameters
Date_ 20191107
Time 10.31
INSTRUM FOURIER300
PROBHD 5 mm DUL 13C-1
PULPROG zg30
TD 32768
SOLVENT DMSO
NS 16
DS 0
SWH 6103.516 Hz
FIDRES 0.186265 Hz
AQ 2.6843545 sec
RG 32
DW 81.920 usec
DE 6.50 usec
TE 300.3 K
D1 2.00000000 sec
TD0 1

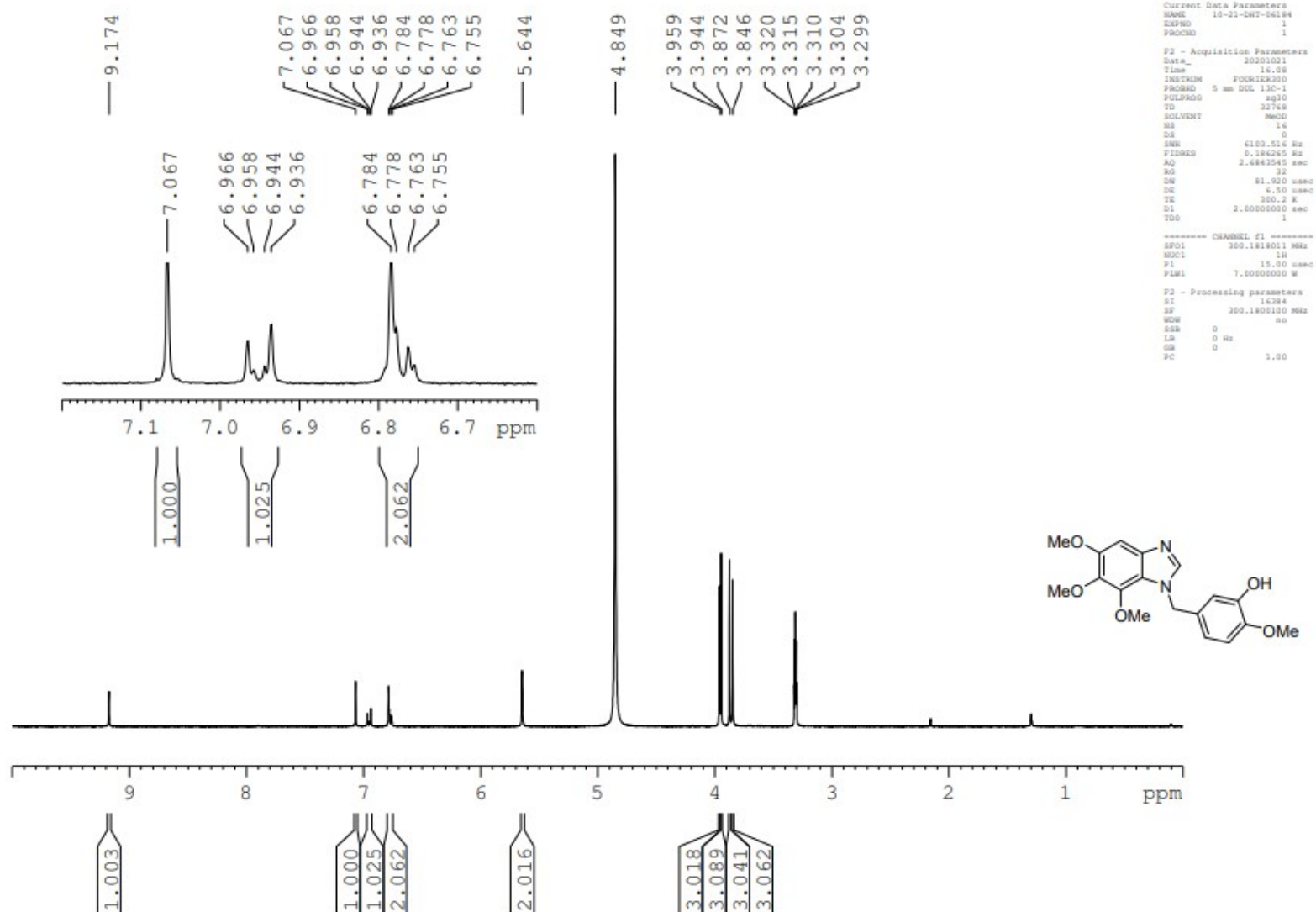
===== CHANNEL f1 =====
SF01 300.1818011 MHz
NUC1 1H
P1 15.00 usec
PLW1 5.61999989 W

F2 - Processing parameters
SI 16384
SF 300.1800067 MHz
WDW no
SSB 0
LB 0 Hz
GB 0
PC 1.00

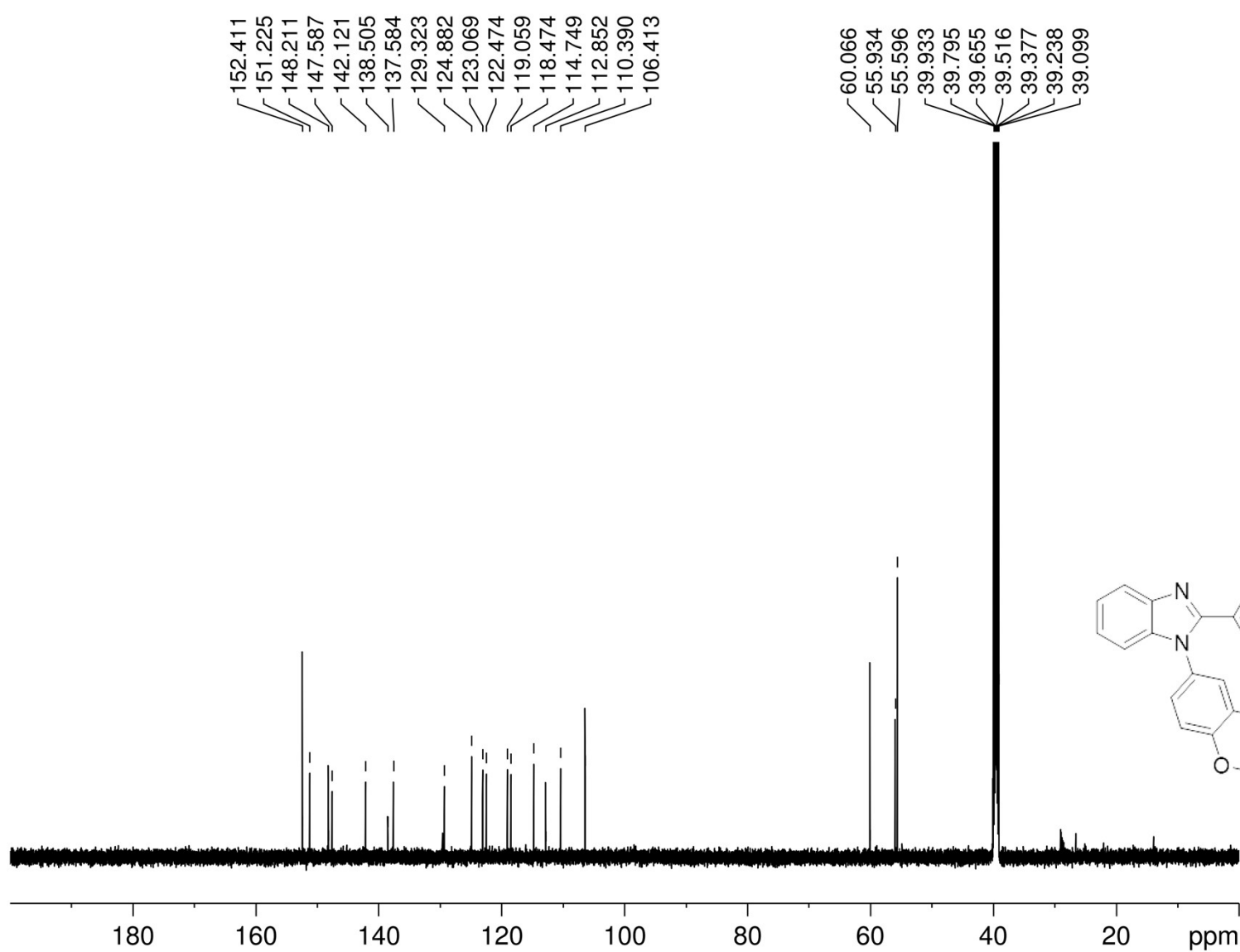
¹H Spectrum for compound 14



¹H Spectrum for compound 15

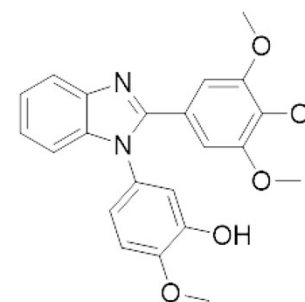


¹³C Spectrum for compound 4

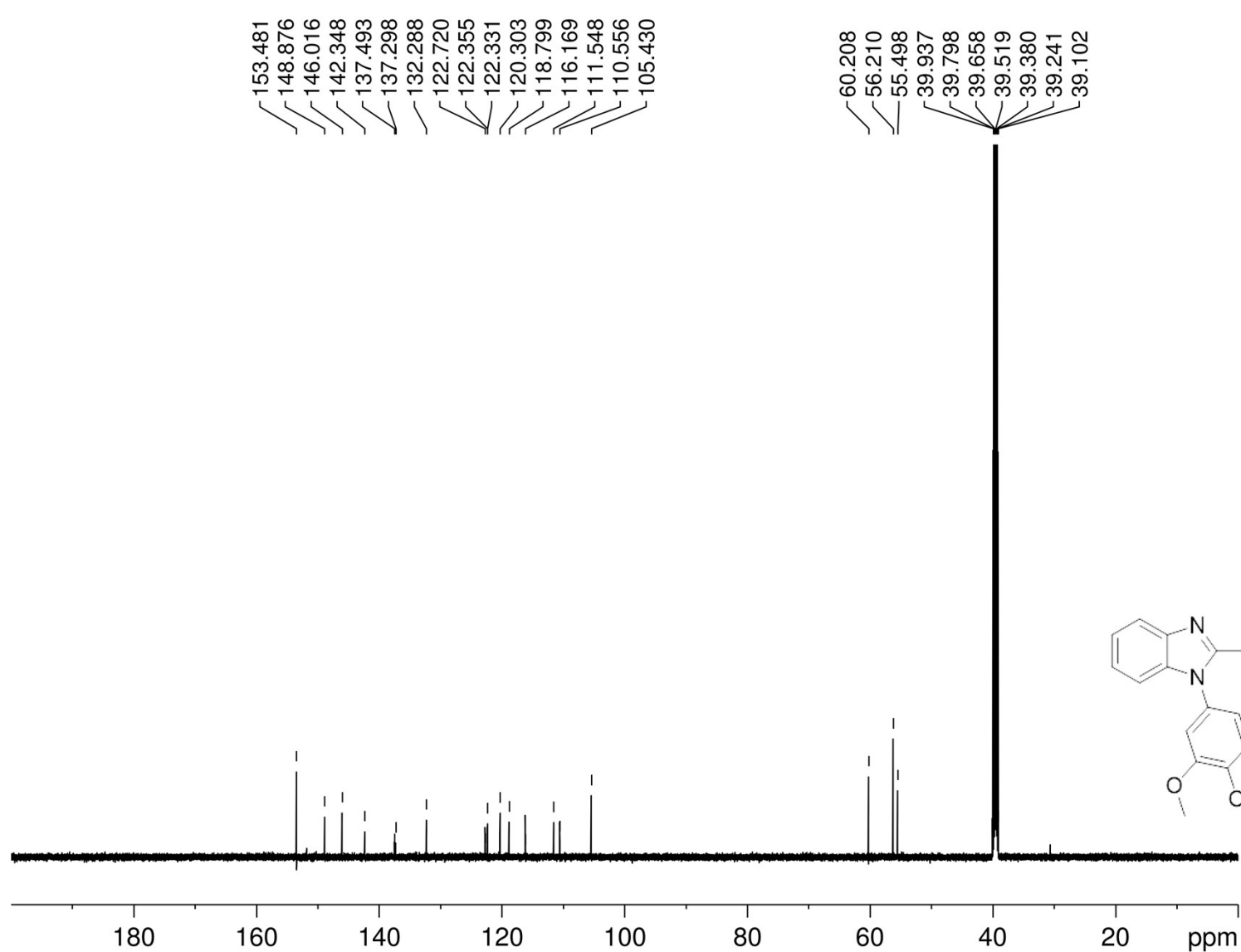


Current Data Parameters
NAME 0705-61-222-600
EXPNO 2
PROCNO 1

F2 - Processing parameters
SI 65536
SF 150.8273086 MHz
WDW EM
SSB 0
LB 0.30 Hz
GB 0
PC 1.00

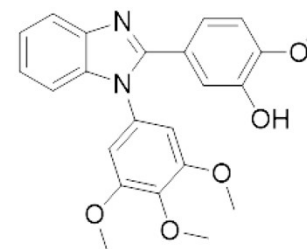


¹³C Spectrum for compound 5

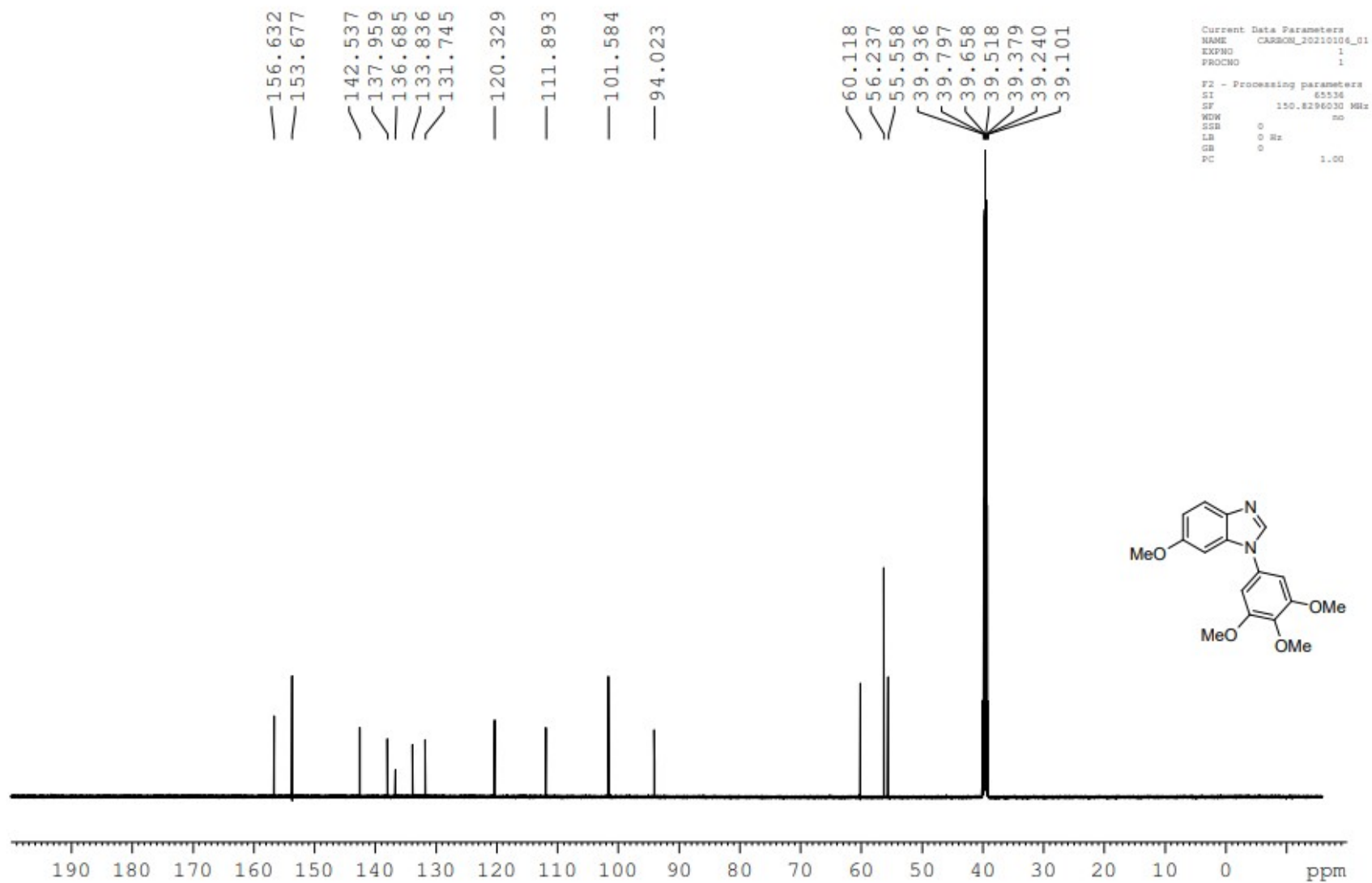


Current Data Parameters
NAME CARBON_20190705_01
EXPNO 2
PROCNO 1

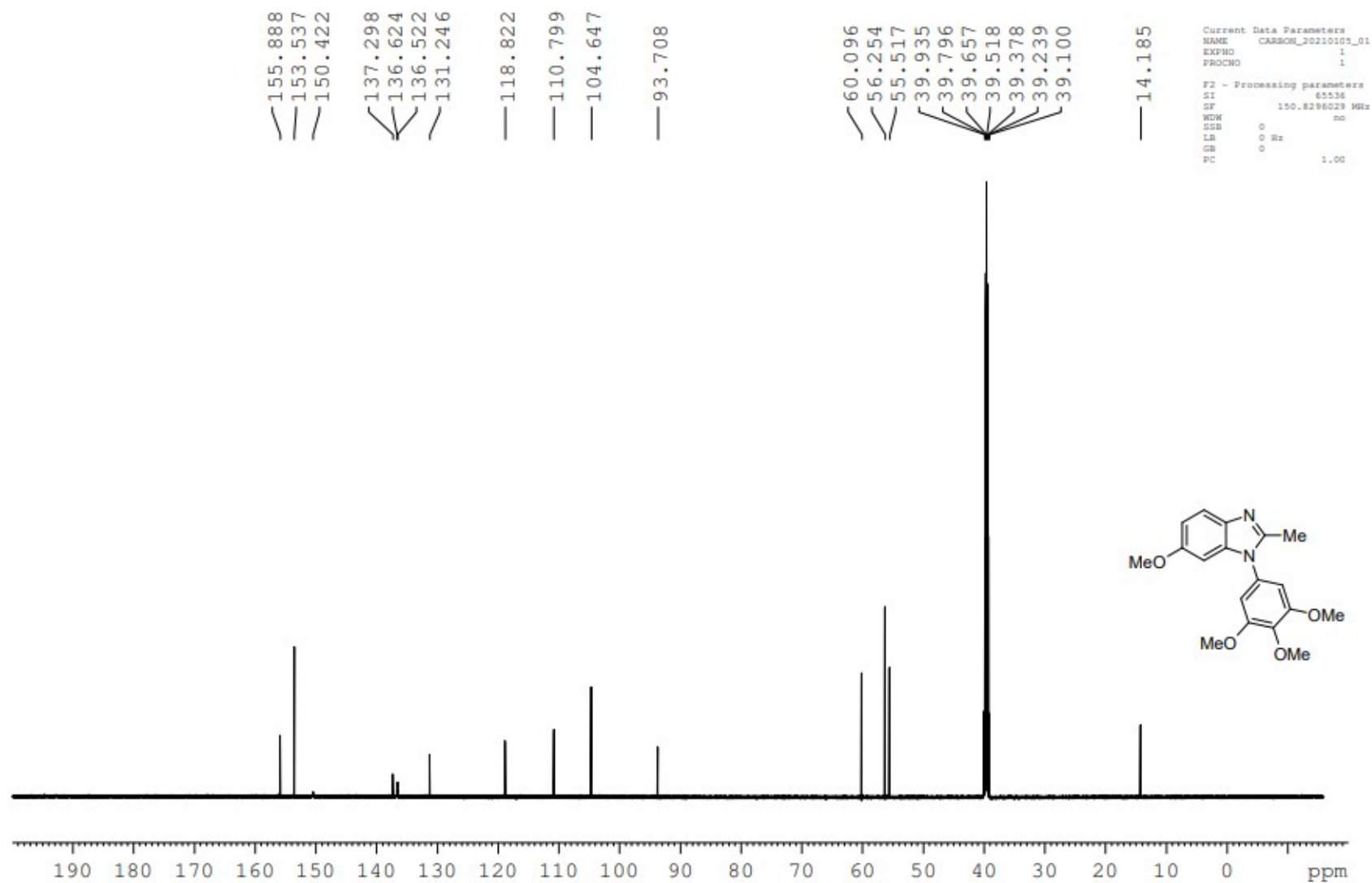
F2 - Processing parameters
SI 65536
SF 150.8273097 MHz
WDW no
SSB 0
LB 0 Hz
GB 0
PC 1.00



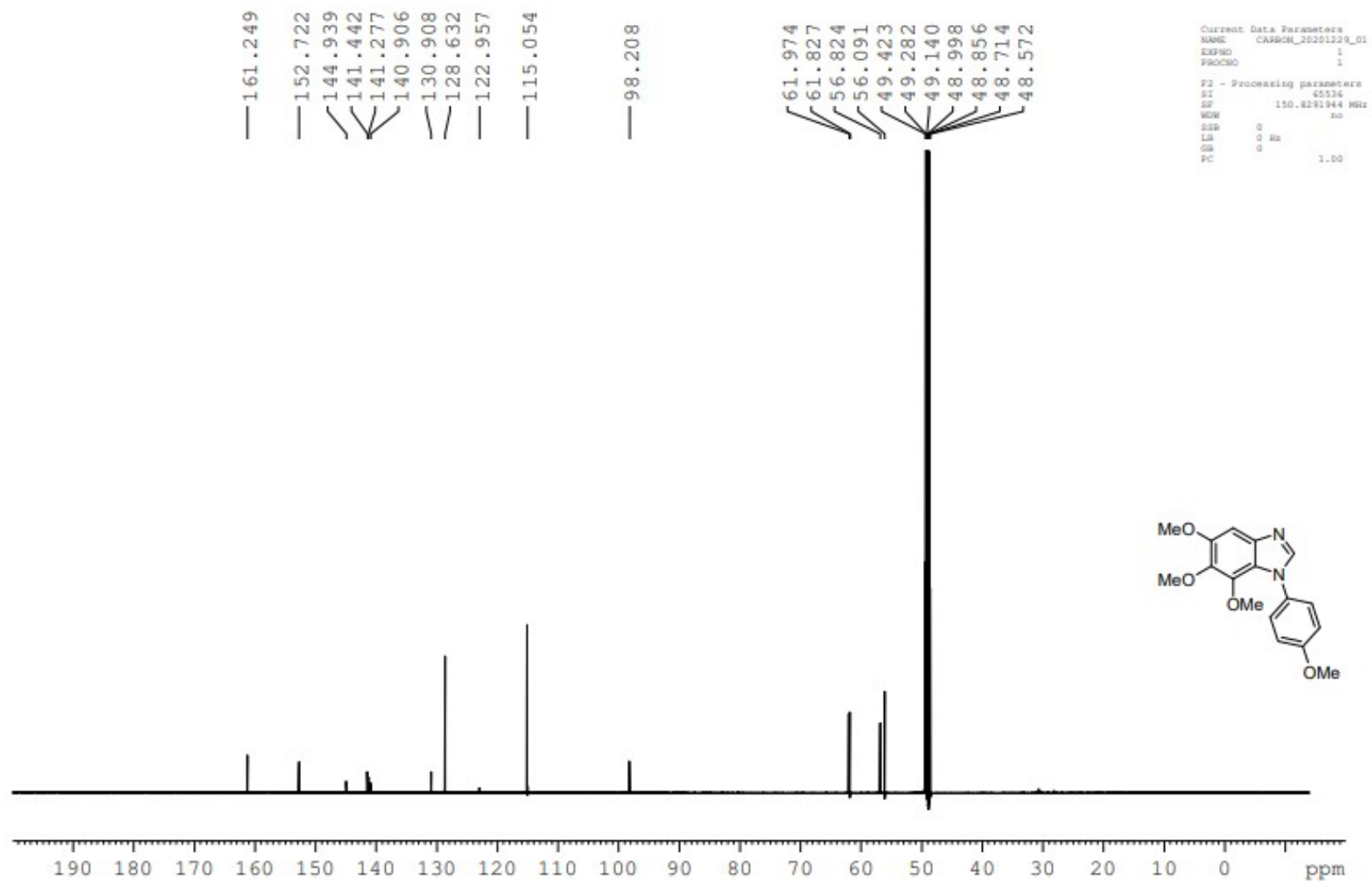
¹³C Spectrum for compound 6



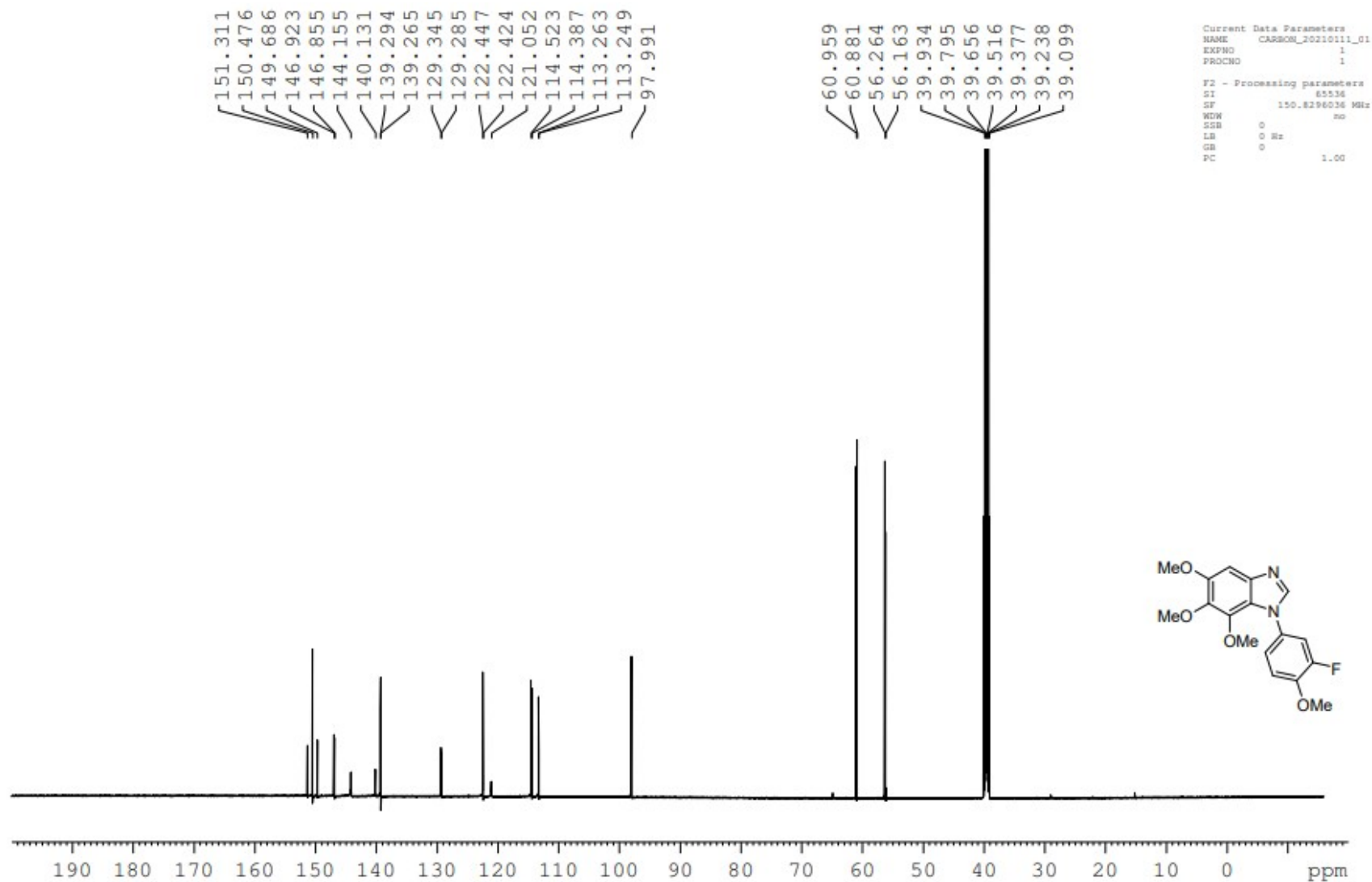
¹³C Spectrum for compound 7



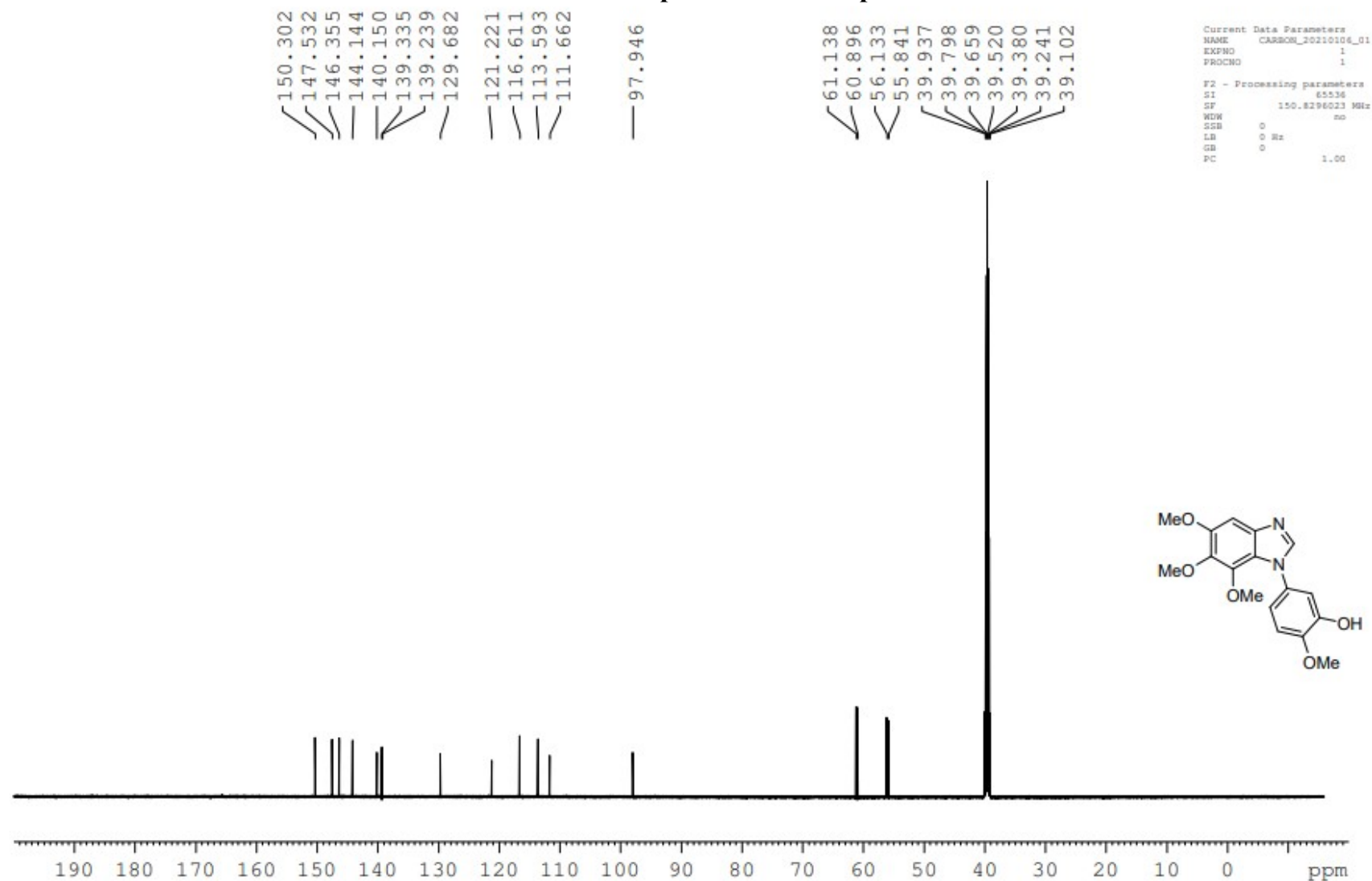
¹³C Spectrum for compound 8



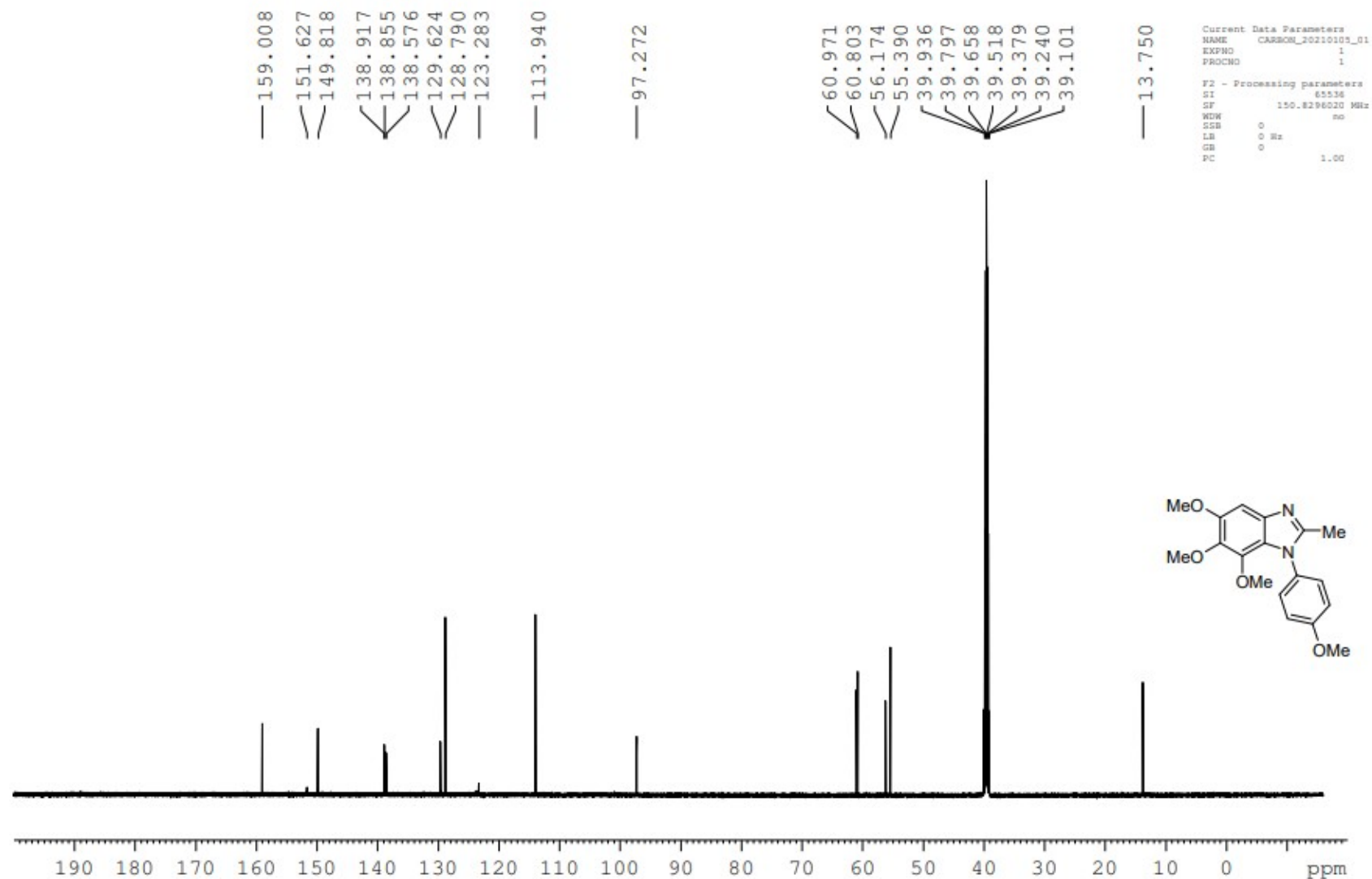
¹³C Spectrum for compound 9



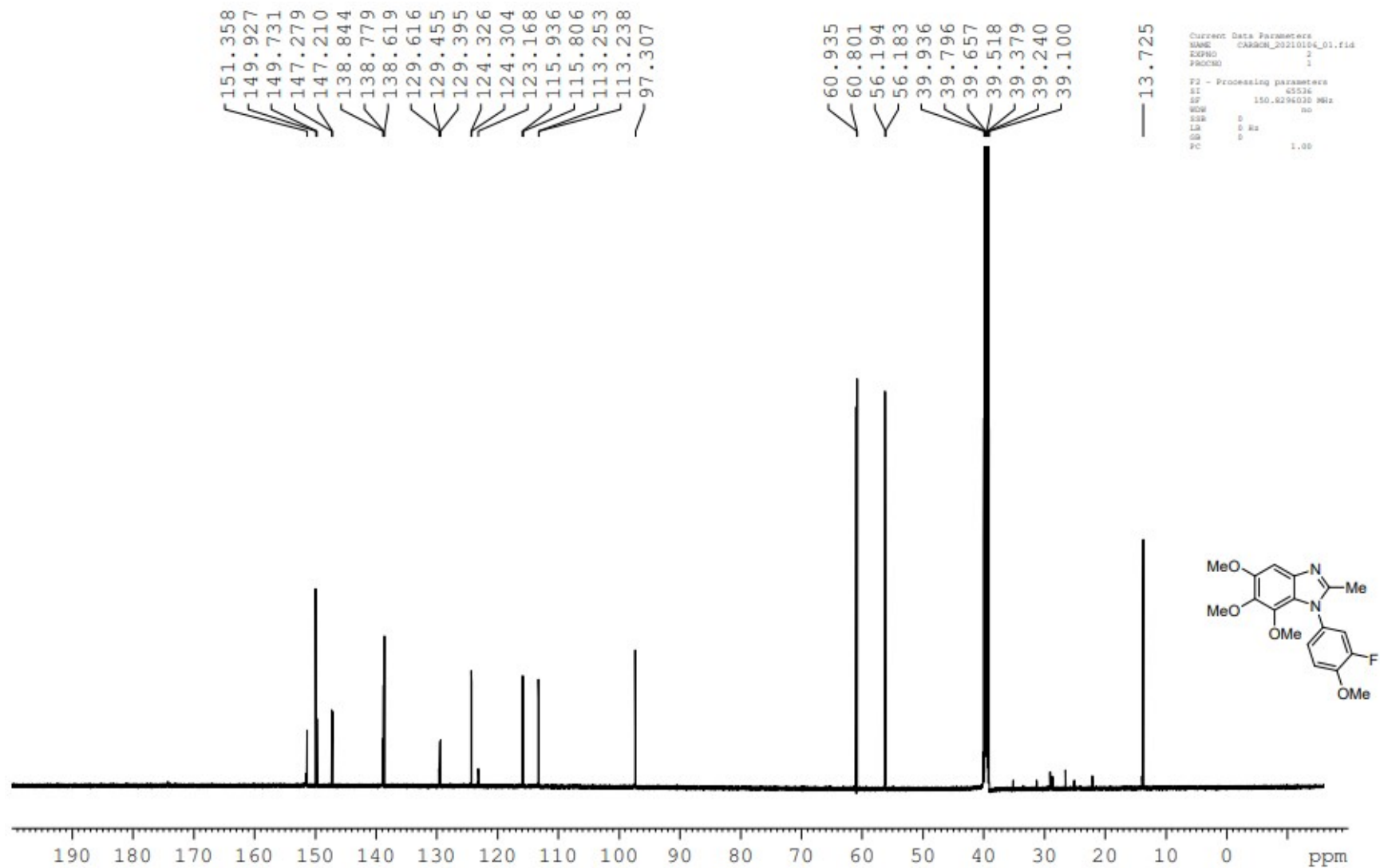
¹³C Spectrum for compound 10



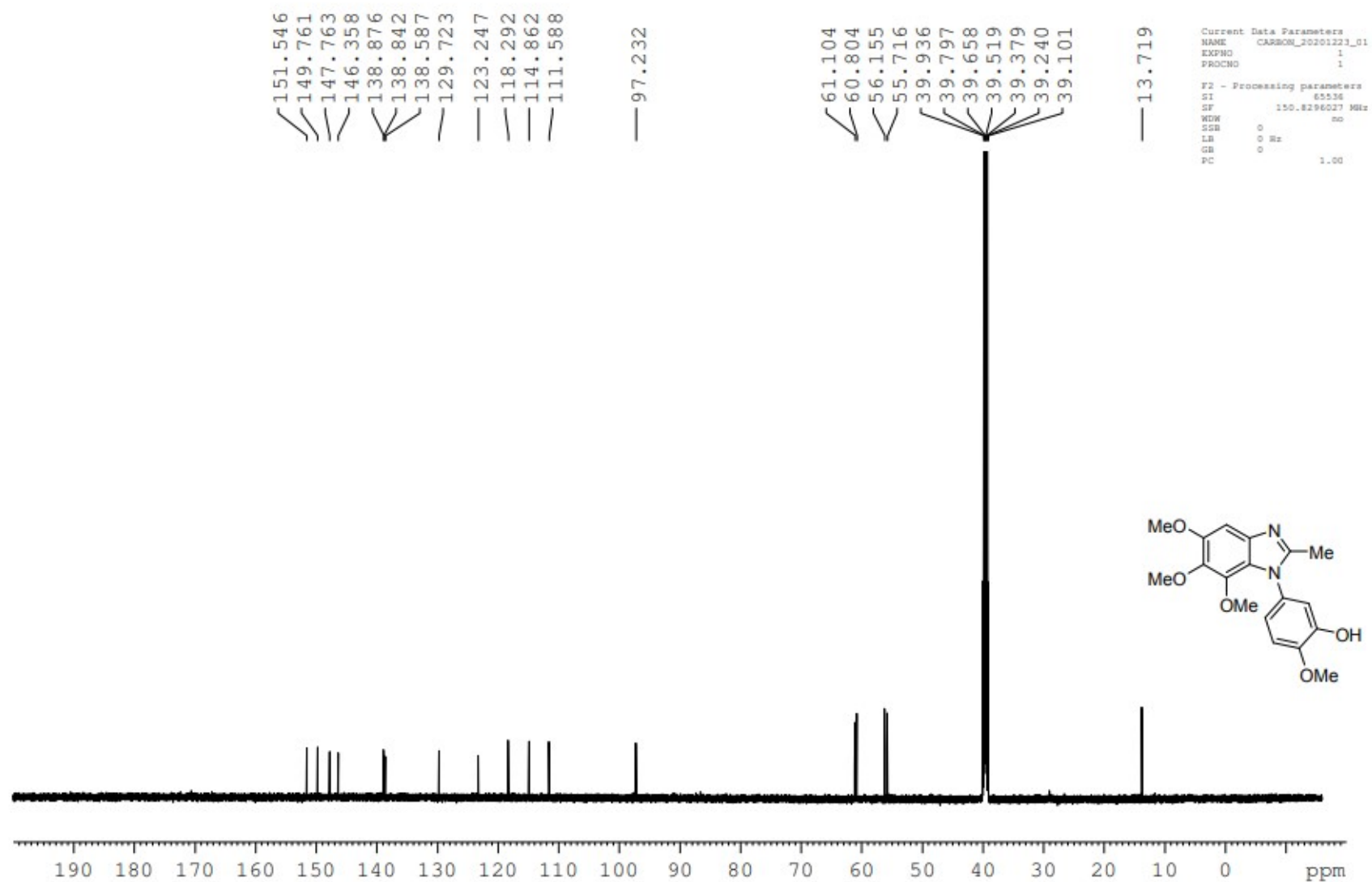
¹³C Spectrum for compound 11



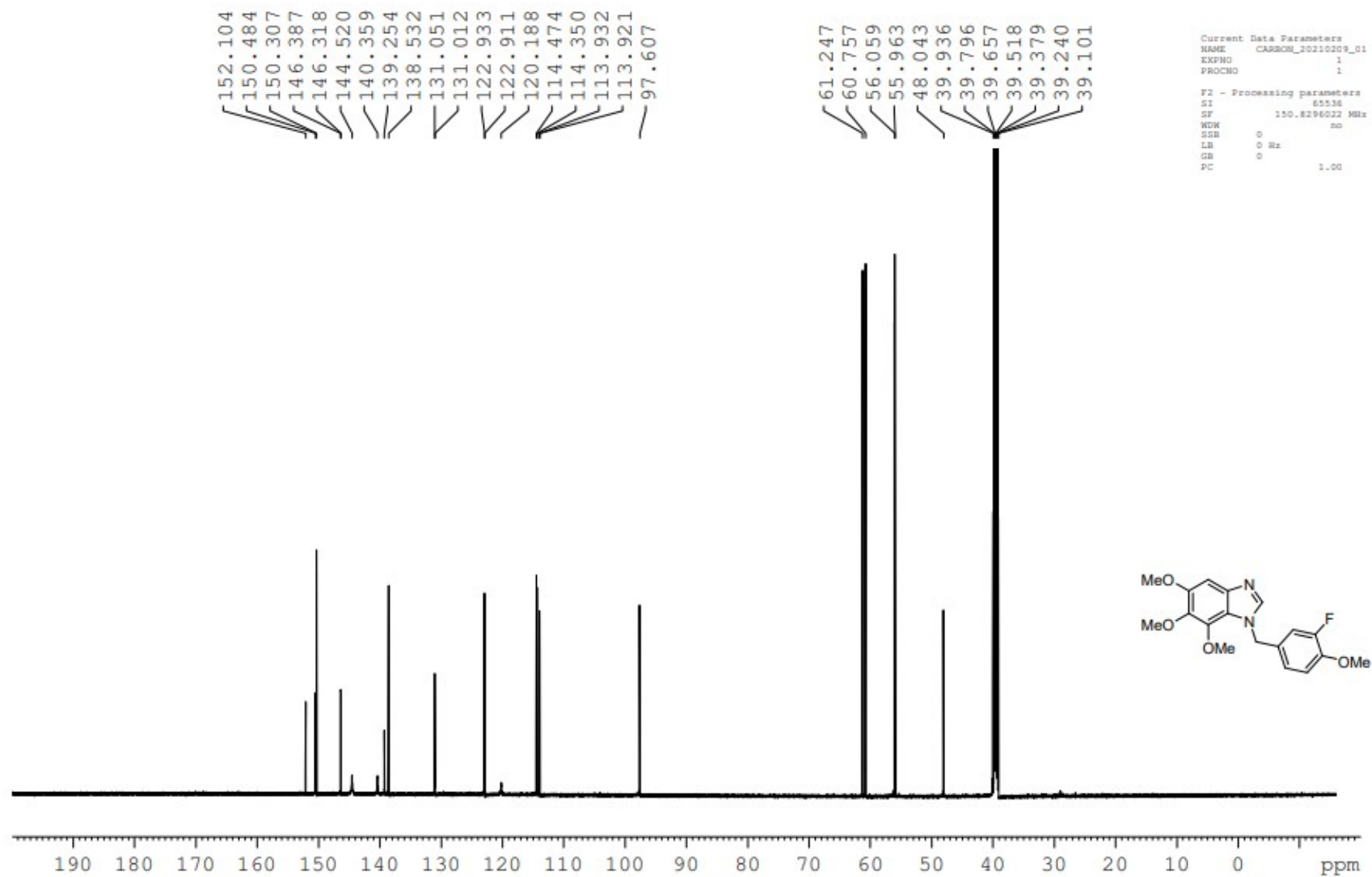
¹³C Spectrum for compound12



¹³C Spectrum for compound 13



¹³C Spectrum for compound 14



¹³C Spectrum for compound 15

