

Supporting Information

Ganoderma lucidum bran-derived blue-emissive and green-emissive carbon dots for detection of copper ions

Baoying Wang¹, Jingming Lan¹, Junjie Ou¹, Chunmiao Bo¹, Bolin Gong^{1*}

¹School of Chemistry and Chemical Engineering, Key Laboratory for Chemical Engineering and Technology, State Ethnic Affairs Commission, North Minzu University, Yinchuan, 750021, China

***Corresponding author.**

Email address: gongbl@nxu.edu.cn (B. Gong)

Table of contents

Supporting figures

Fig. S1 UV-vis spectra of (a) BCDs and (b) GCDs S-3

Fig. S2 Fluorescence lifetime of (a) BCDs with and (b) GCDs
with or without Cu^{2+} S-4

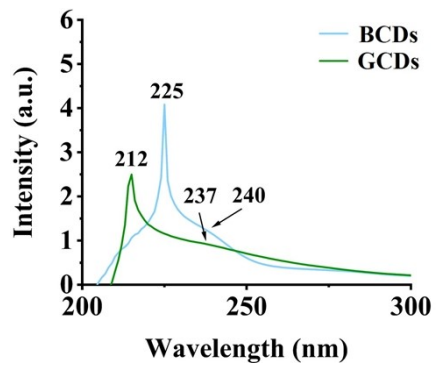


Fig. S1 UV-vis spectra of (a) BCDs and (b) GCDs

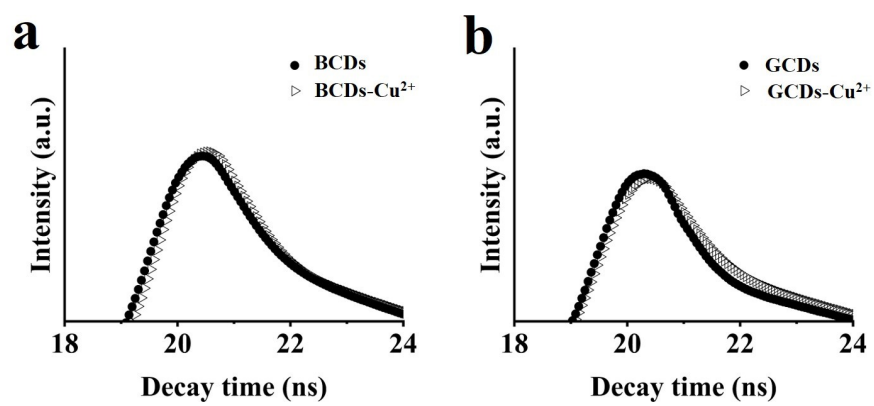


Fig. S2 Fluorescence lifetime of (a) BCDs with and (b) GCDs with or without Cu²⁺