

Electronic Supplementary Information

Solid-state Electrolyte for Electrochemical Lithium–Sulfur Cells

Yi-Chen Huang,^a Bo-Xian Ye^a and Sheng-Heng Chung^{*ab}

^a Department of Materials Science and Engineering, National Cheng Kung University, No.1 University Road, Tainan City 70101, Taiwan

^b Hierarchical Green-Energy Materials Research Center, National Cheng Kung University, No.1 University Road, Tainan City 70101, Taiwan

*Sheng-Heng Chung: SHChung@gs.ncku.edu.tw

Supporting Figures

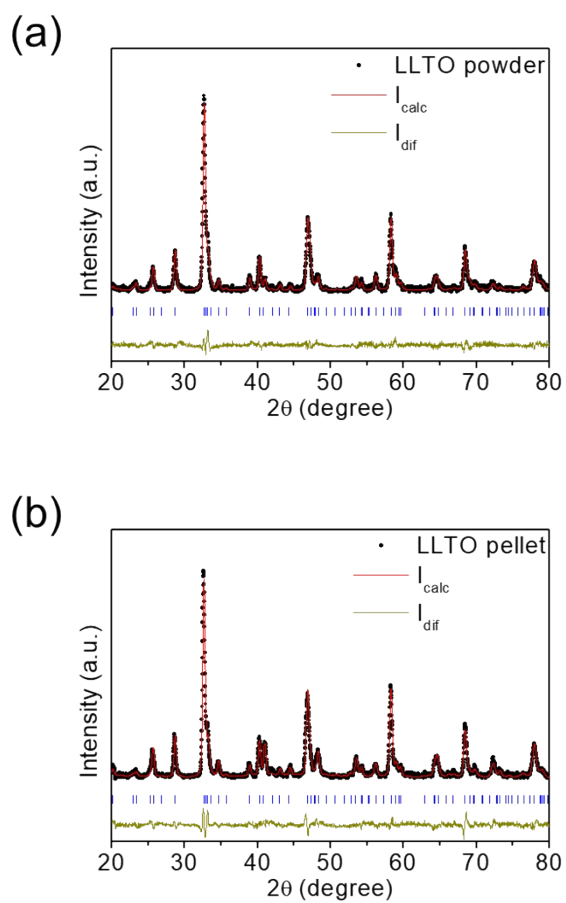


Fig. S1 Experimental (black) and calculated (red) X-ray diffraction (XRD) patterns of lithium lanthanum titanate (LLTO) solid-state electrolyte: (a) raw powder and (b) sintered pellet.

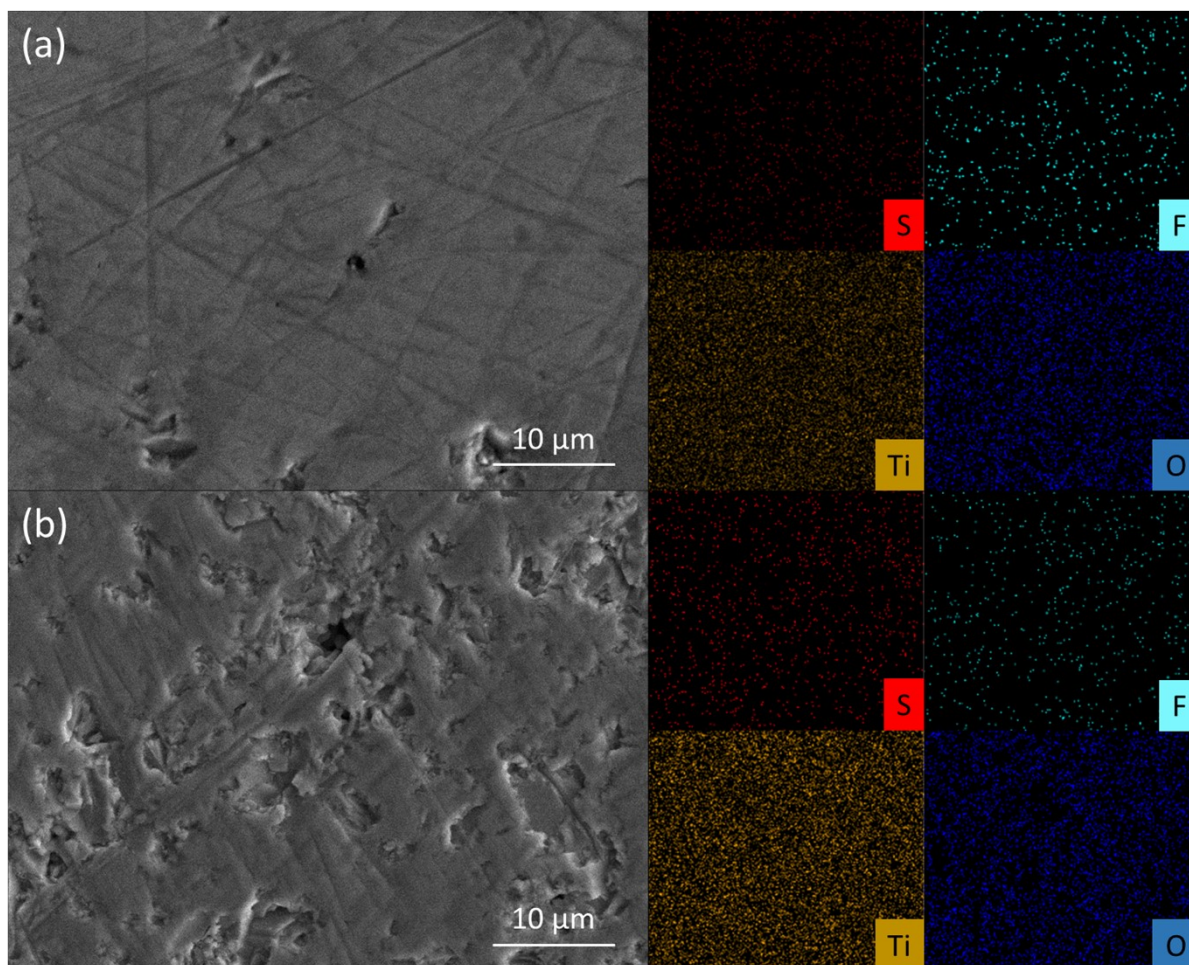


Fig. S2. Scanning electron microscopy (SEM) and the corresponding energy-dispersive X-ray spectroscopy (EDS) elemental mapping results of cycled LLTO sample facing (a) the lithium electrode and (b) the polysulfide electrode.