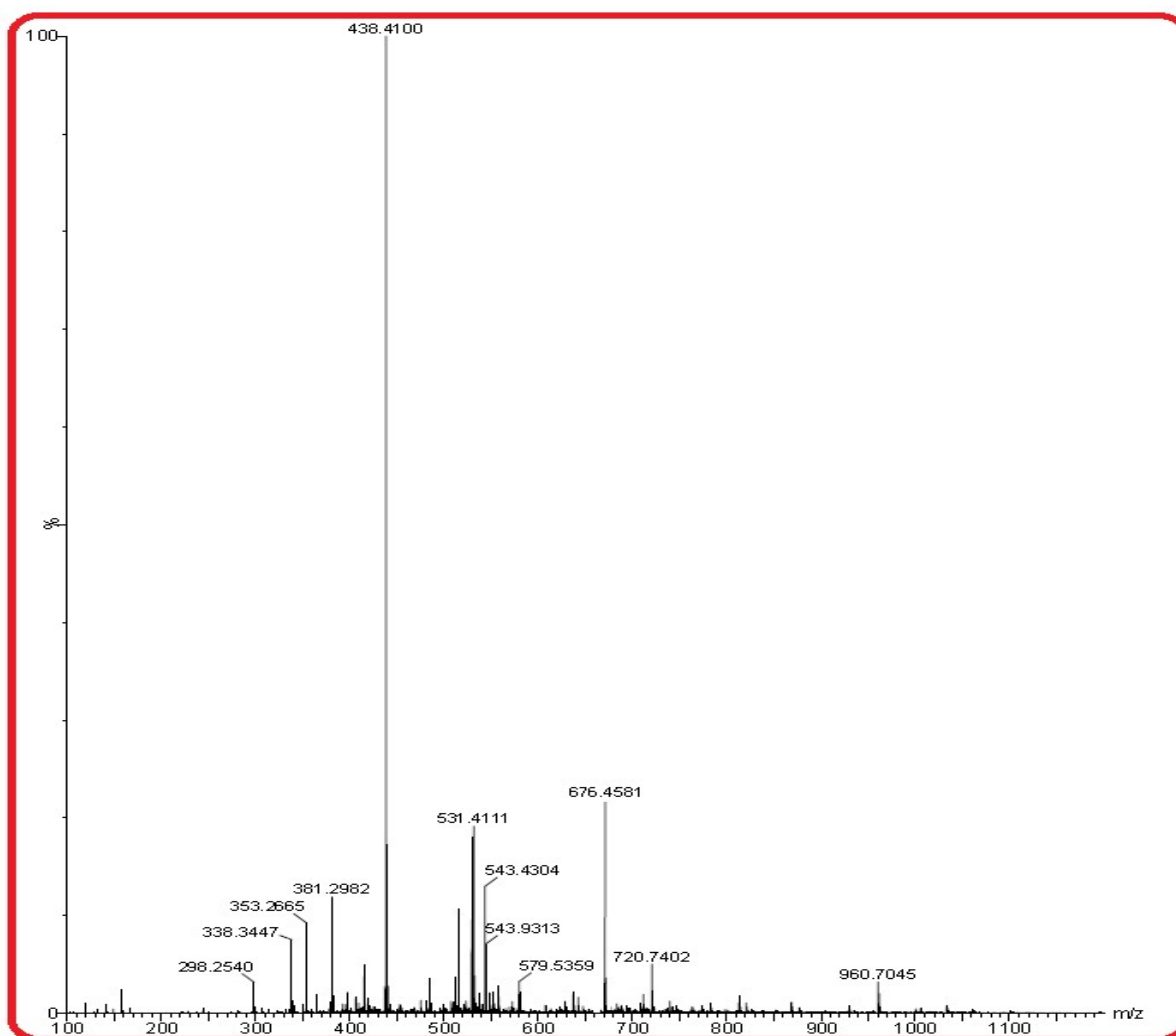


Supplementary Information

**A highly sensitive triazole-based perfectly water soluble novel *bis* Schiff base reversible fluorescent-colorimetric chemosensor for fast detection of Pb<sup>2+</sup> ion**

**Vanshika Sharma, Sandhya Savita and Goutam Kumar Patra\***  
**Department of Chemistry, Guru Ghasidas Vishwavidyalaya, Bilaspur (C.G)**



**Fig. S1.** Mass spectra of L

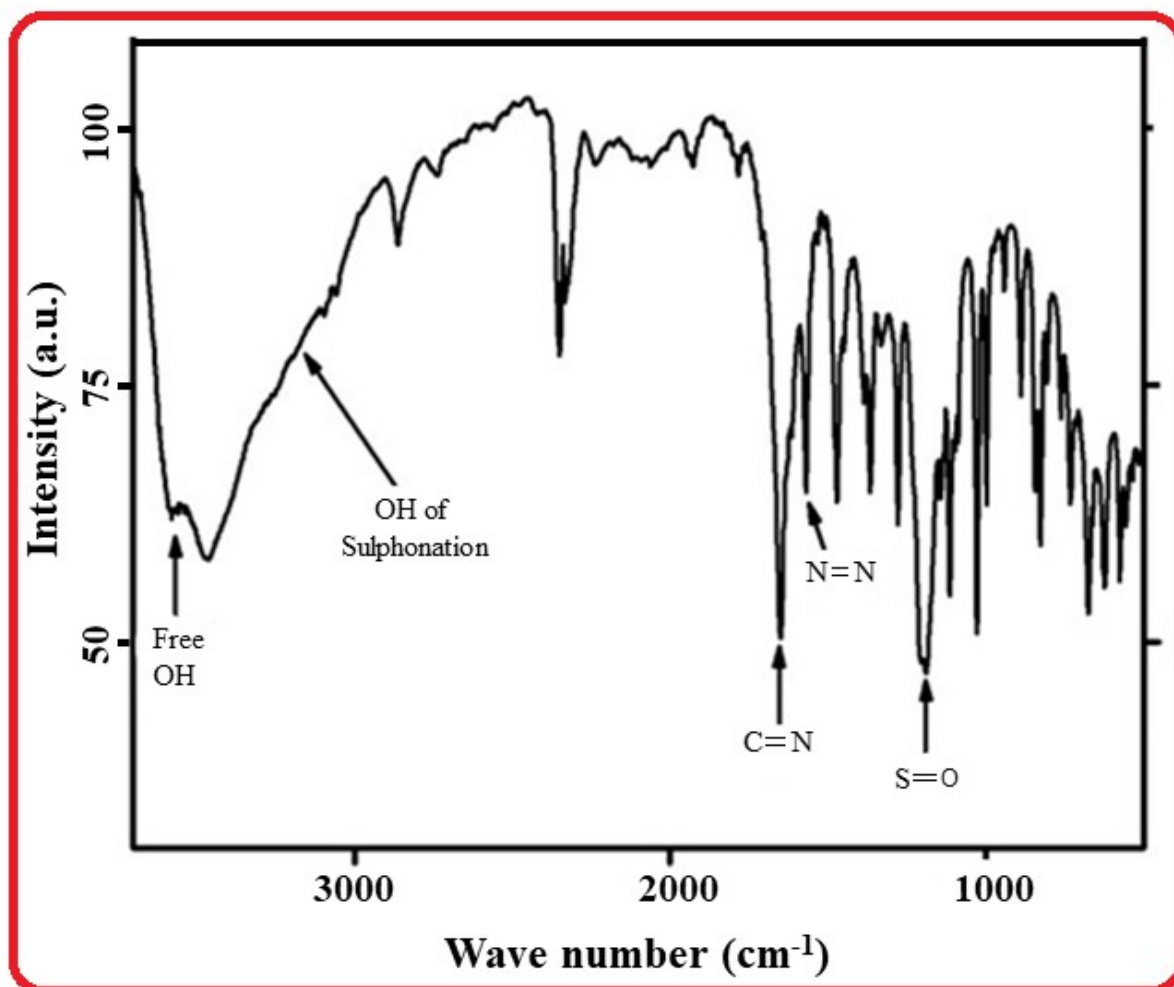
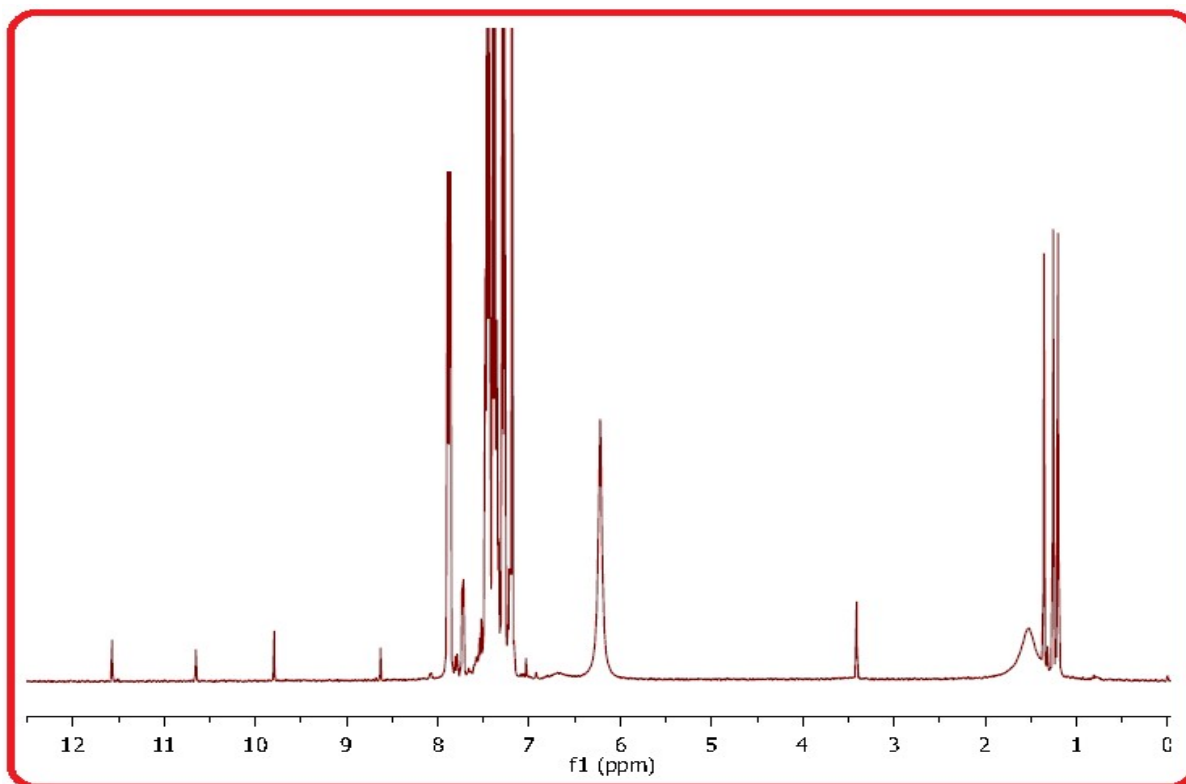
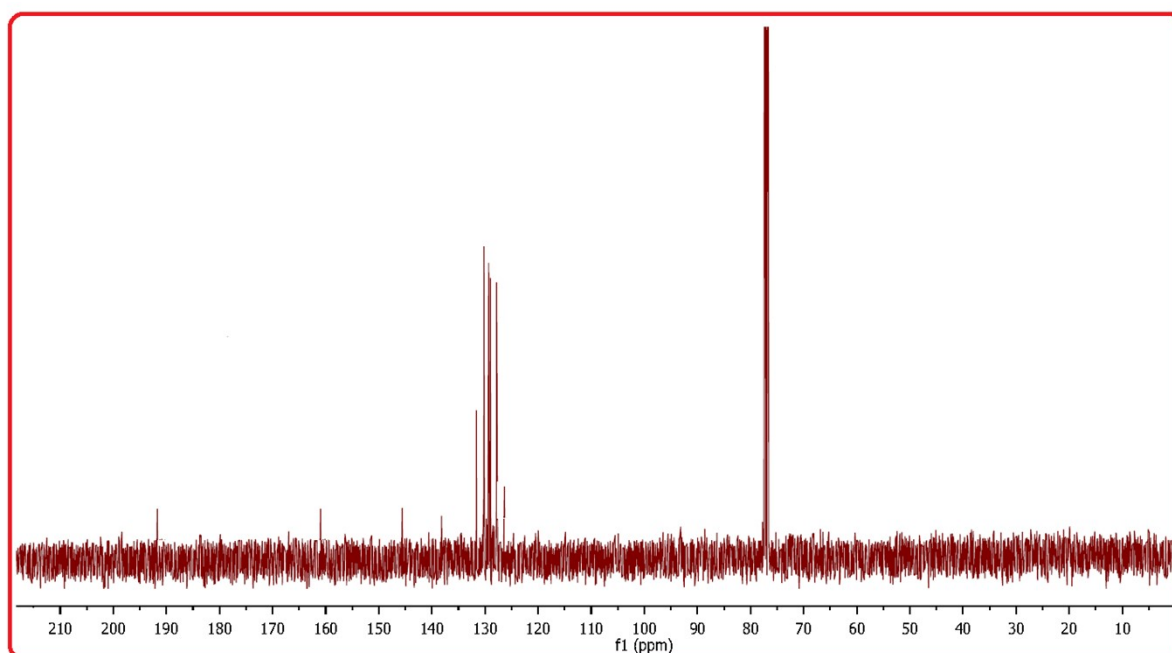


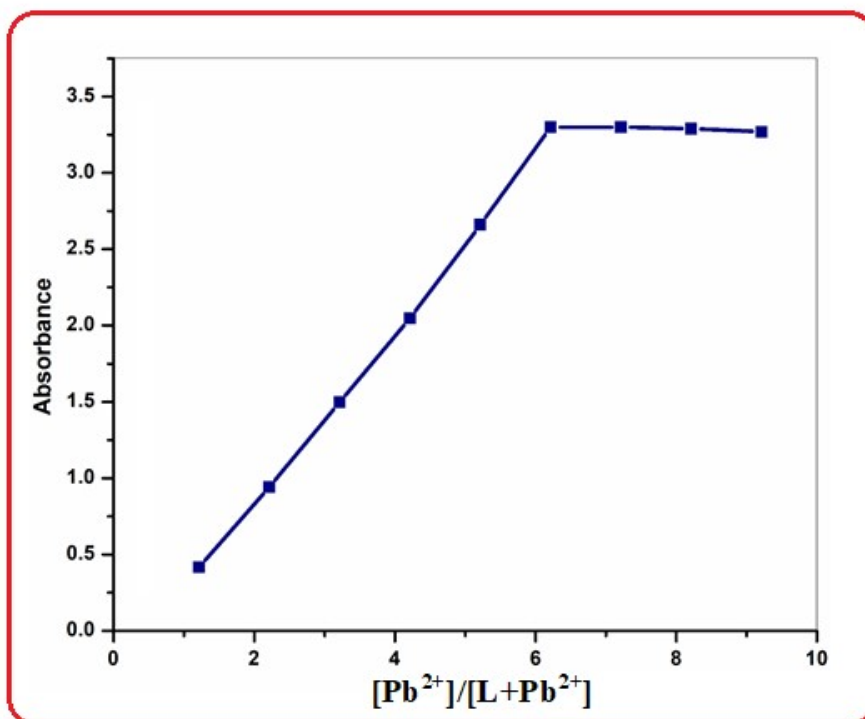
Fig. S2. FTIR spectra of L



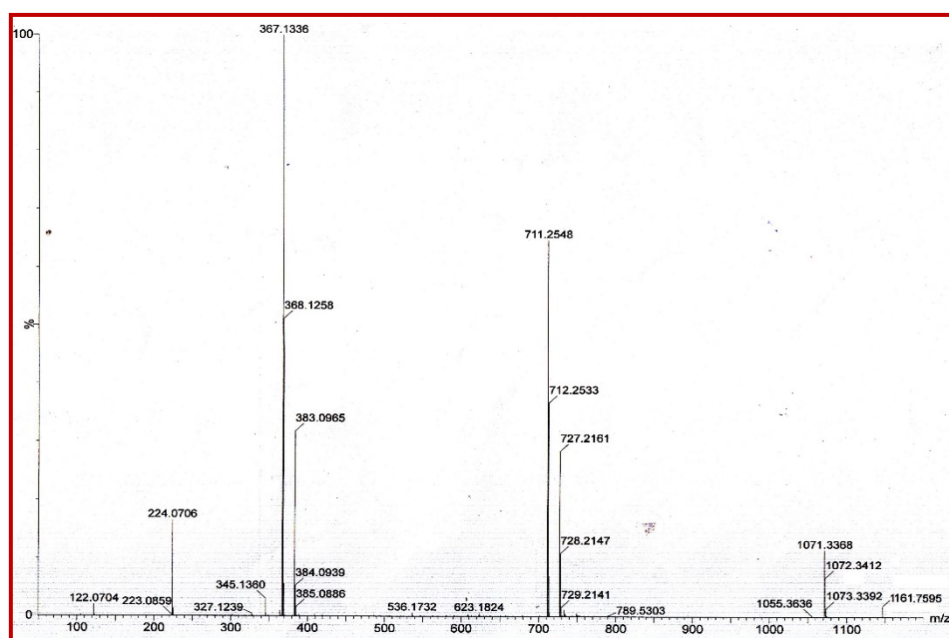
**Fig. S3.** <sup>1</sup>H-NMR spectra of L in CDCl<sub>3</sub>



**Fig. S4.** <sup>13</sup>C-NMR spectra of L in CDCl<sub>3</sub>



**Fig. S5.** Job's plot for Pb<sup>2+</sup>



**Fig. S6.** ESI-mass spectra of L-Pb<sup>2+</sup> adduct.

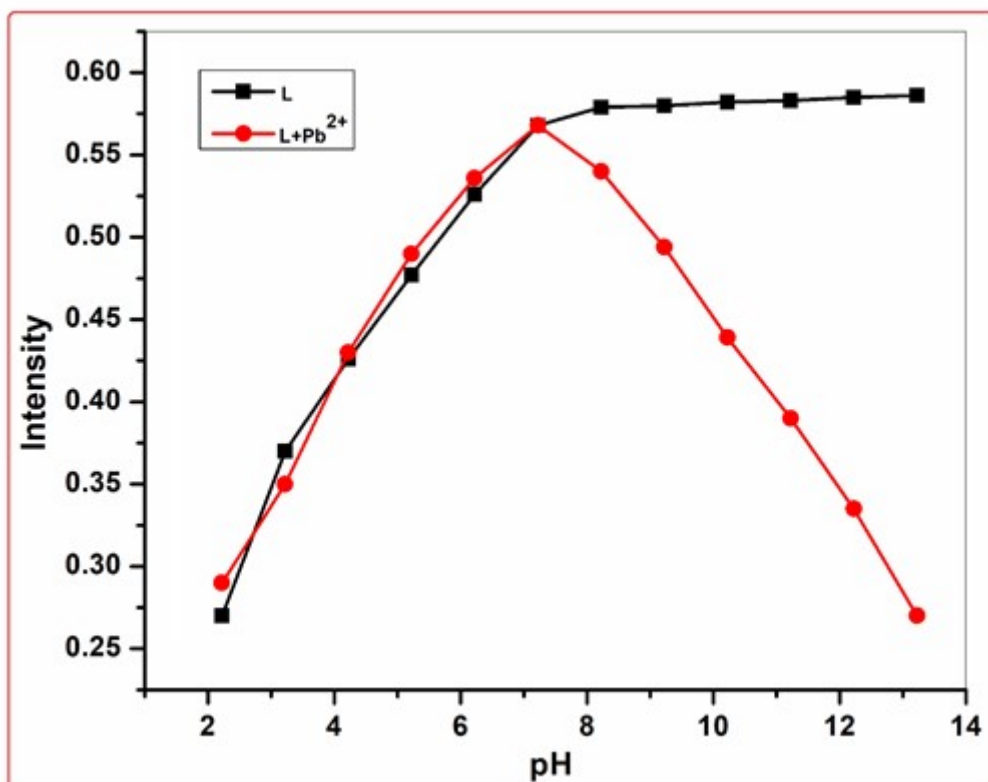


Fig. S7. pH effect of L and L-Pb<sup>2+</sup>

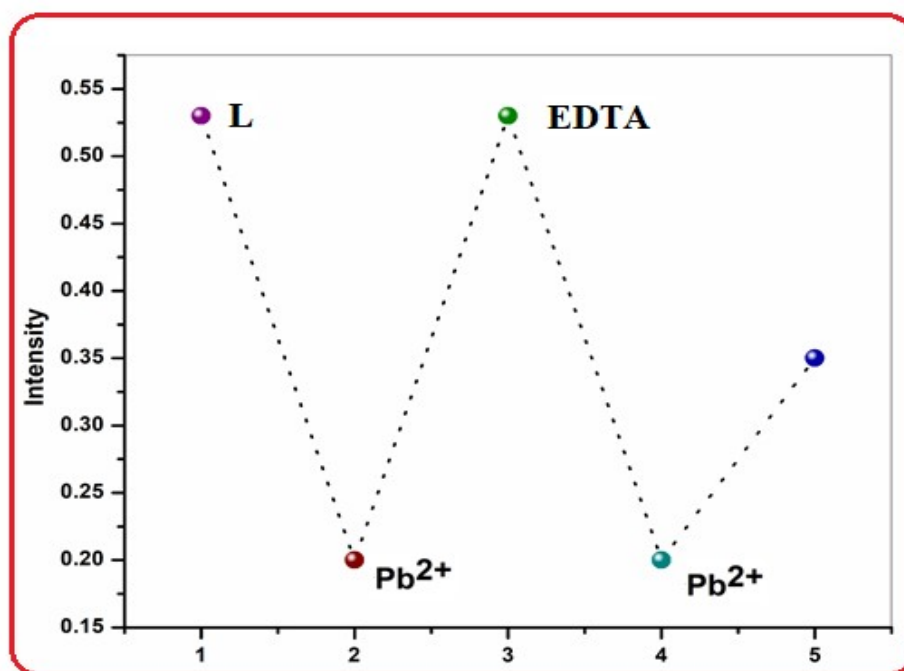
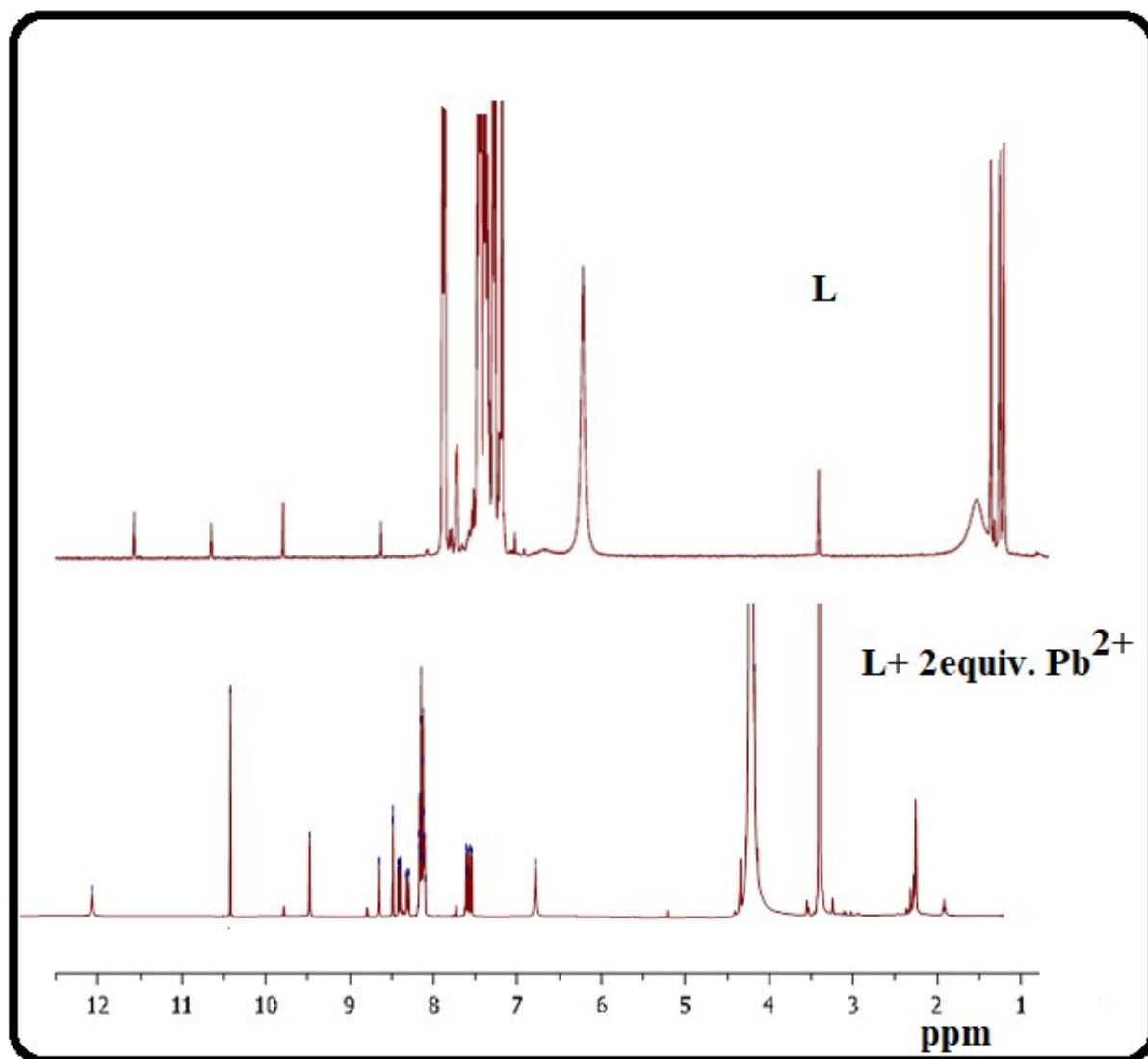


Fig. S8. Reversibility study of L with Pb<sup>2+</sup> and Na<sub>2</sub>EDTA upto three cycle



**Fig. S9.** <sup>1</sup>H-NMR spectra of **L** and **L-Pb<sup>2+</sup>**

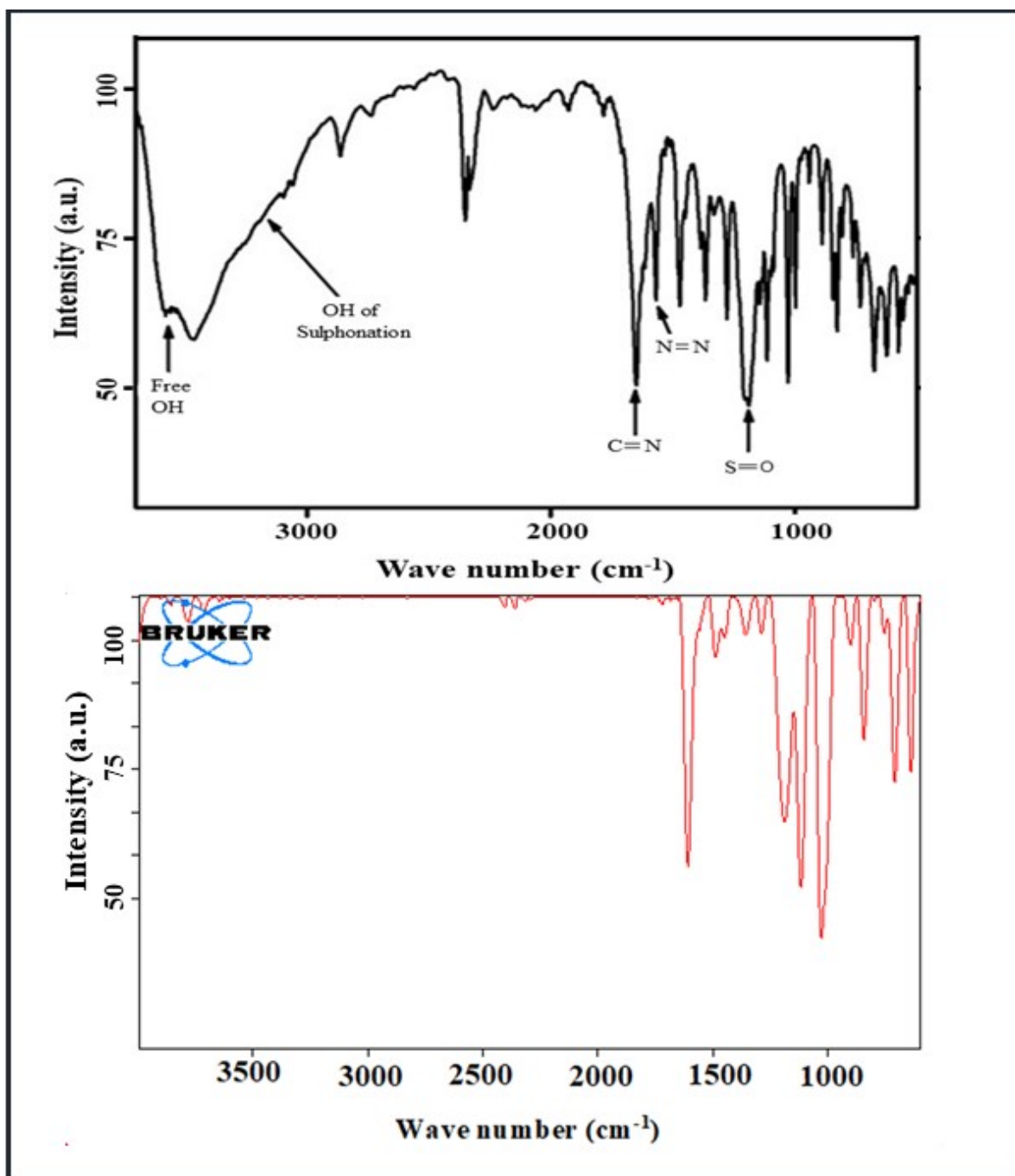


Fig. S10. FTIR spectra of L and L-Pb<sup>2+</sup> adduct.