

Supporting information of

Dual anticancer and antibacterial activity of fluorescent NaphthoImidazolium salts

Dung Ngoc Tran,^{a,‡} Thi Thuy Hang Hoang,^{b,‡} Sondavid Nandanwar,^c Vuong Thi Thanh Xuan Ho,^d Van Thong Pham,^e Huy Duc Vu,^f Xuan Ha Nguyen,^g Huy trung Nguyen,^h Trang Van Nguyen,^h Thuy Kieu Van Nguyen,ⁱ Lam Dai Tran,^h Myeongkee Park,^j Songyi Lee,^{*i,j} Thanh Chung Pham,^{*h}

^{a.} *Faculty of Chemistry, Hanoi National University of Education, Hanoi, Vietnam*

^{b.} *Department of Chemistry, Soongsil University, Seoul 06978, South Korea.*

^{c.} *Eco-friendly New Materials Research Center, Korea Research Institute of Chemical Technology, 141 Gajeong-ro, Yuseong-gu, Daejeon City, Republic of Korea*

^{d.} *Faculty of Pharmacy, Dong A University, Danang, Vietnam*

^{e.} *R&D Center, Vietnam Education and Technology transfer JSC, Cau Giay, Hanoi, Vietnam*

^{f.} *Department of Radiology, School of Medicine, Daegu Catholic University, Daegu 42472, Korea*

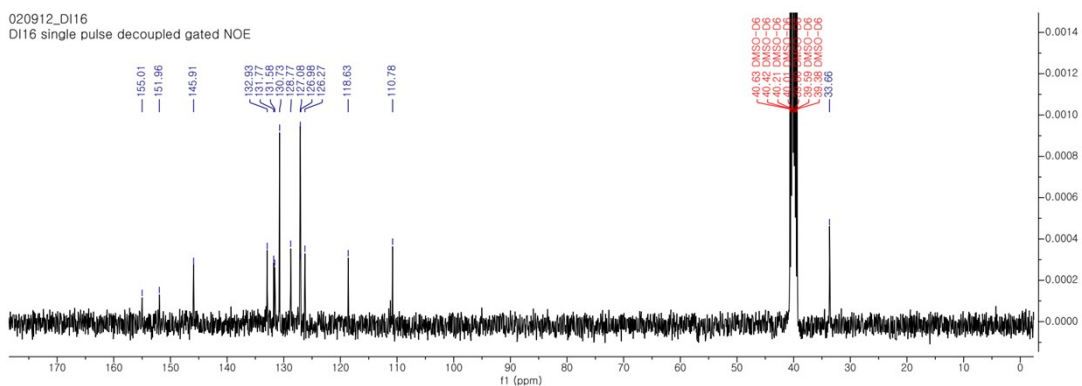
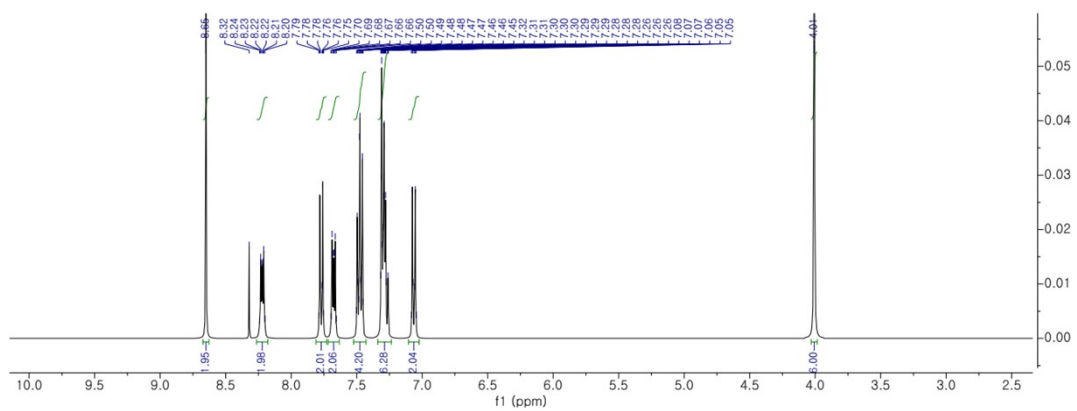
^{g.} *Institute of Natural Products Chemistry, Vietnam Academy of Science and Technology, 18 Hoang Quoc Viet, Cau Giay, Hanoi, Vietnam*

^{h.} *Institute for Tropical Technology, Vietnam Academy of Science and Technology, 18 Hoang Quoc Viet, Cau Giay, Hanoi, Vietnam. Email: ptchung@itt.vast.vn*

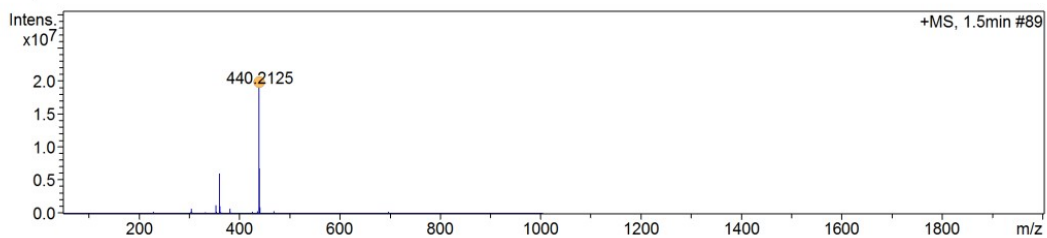
^{i.} *Industry 4.0 Convergence Bionics Engineering, Pukyong National University, Busan 48513, Korea. Email: slee@pknu.ac.kr*

^{j.} *Department of Chemistry, Pukyong National University, Busan 48513, Korea*

^{k.} *‡ These authors equally contributed to this work.*



+MS, 1.5min #89



Meas. m/z	#	Ion Formula	m/z	err [ppm]	mSigma	# mSigma	Score	rdb	e ⁻ Conf	N-Rule
440.2125	1	C ₃₁ H ₂₆ N ₃	440.2127	0.4	9.1	1	100.00	20.5	even	ok

Figure S1. ¹H-NMR, ¹³C-NMR and HR-MS spectra of NI-TPA

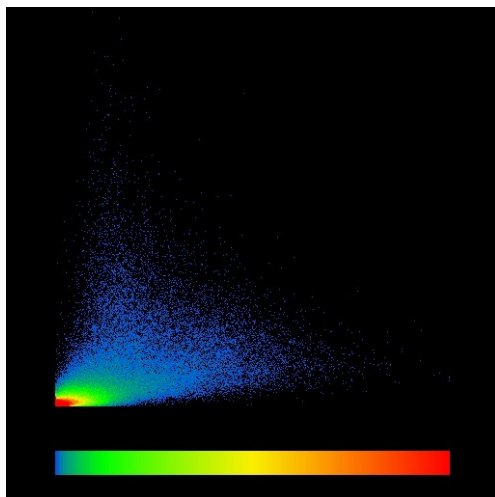


Figure S2. Colocalization analysis plot of the Lysotracker and NI-TPA.

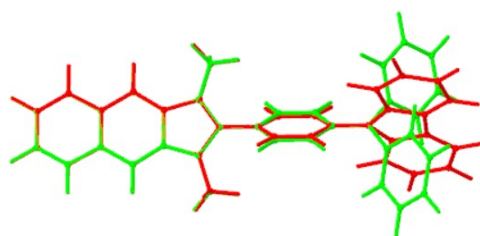


Figure S3. Merge S_0 geometry of NI-Cbz (red) and NI-TPA (green)

Table S1. RMSD of the backbone protein, RMSD of the ligand, and Rg analysis for the MD simulations at different times.

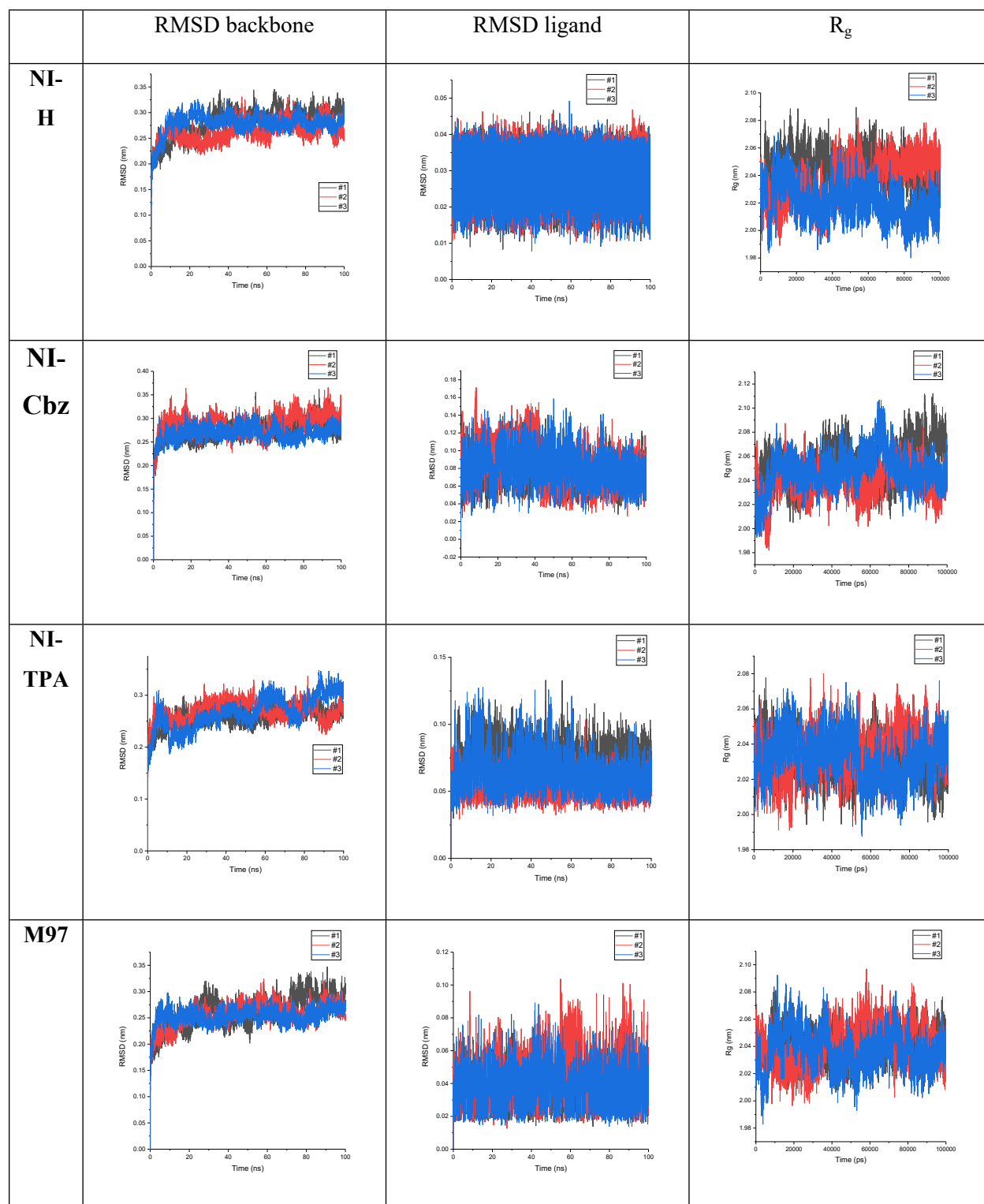


Table S2. Value of RMSD of the backbone protein, RMSD of the ligand, and Rg analysis for the MD simulations at different times and its average

	Time	NI-H	NI-Cbz	NI-TPA	M97
Average RMSD backbone (nm)	1	0.280	0.271	0.258	0.261
	2	0.262	0.288	0.269	0.255
	3	0.278	0.268	0.266	0.253
	Average	0.273±0.010	0.276±0.011	0.264±0.006	0.256±0.004
Average RMSD Ligand (nm)	1	0.029	0.076	0.074	0.037
	2	0.030	0.083	0.053	0.042
	3	0.029	0.081	0.064	0.036
	Average	0.029±0.0002	0.080±0.003	0.064±0.010	0.038±0.003
Average Rg (nm)	1	2.044	2.053	2.030	2.041
	2	2.037	2.039	2.035	2.040
	3	2.021	2.049	2.032	2.037
	Average	2.034±0.012	2.047±0.007	2.032±0.002	2.039±0.002