

Electronic Supplementary Information for Porosity modeling in a TiNbTaZrMo high-entropy alloy for biomedical applications

Saro San^a, Puja Adhikari^a, Ridwan Sakidja^b, Jamieson Brechtl^c, Peter K Liaw^d, and Wai-Yim Ching^{a*}

a. Department of Physics and Astronomy, University of Missouri Kansas City, Kansas City MO, 64110, USA

b. Department of Physics, Astronomy and Materials Science, Missouri State University, Springfield, MO 65897, USA

c. Buildings and Transportation Science Division, Oak Ridge National Laboratory, Oak Ridge, TN, 37830, USA

d. Department of Materials Science and Engineering, The University of Tennessee, Knoxville, TN, 37996-2100, USA

* Corresponding author.

E-mail address: chingw@umkc.edu

Supplementary Figures

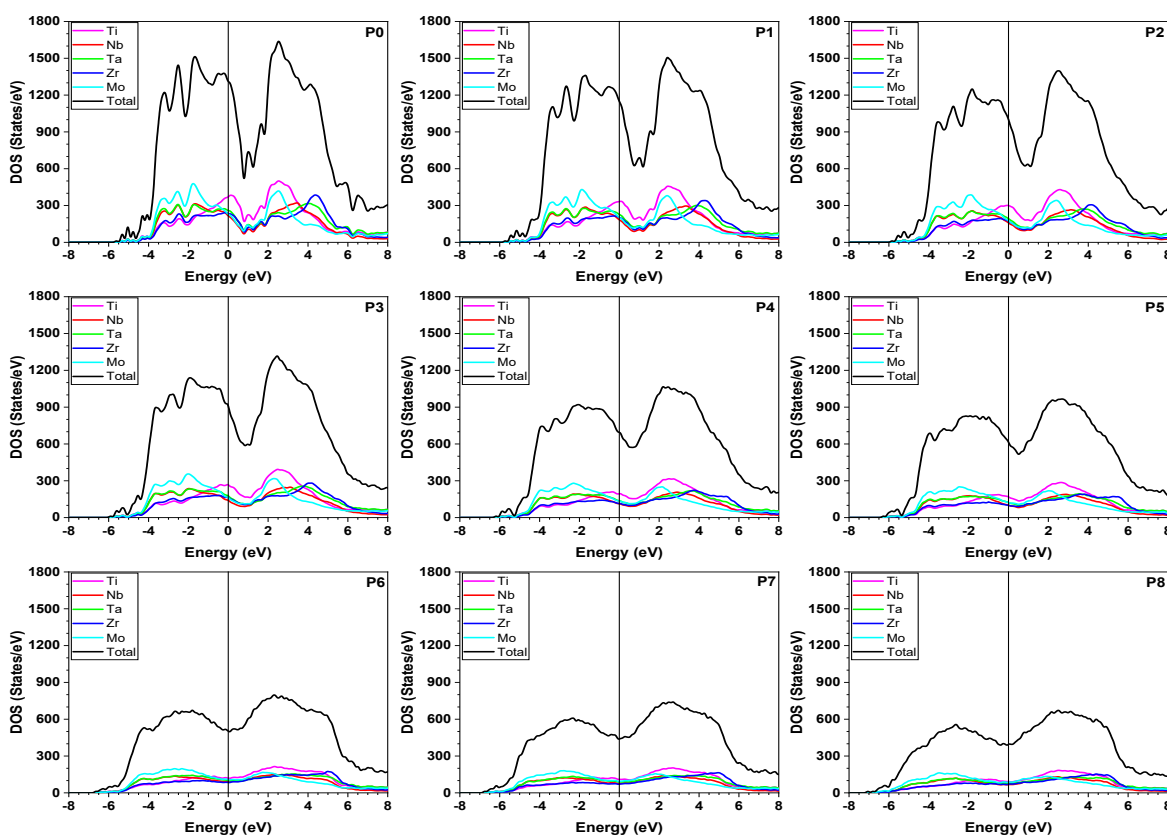


Figure S1. Density of states of porosity, as determined from porosity models P0-P8.

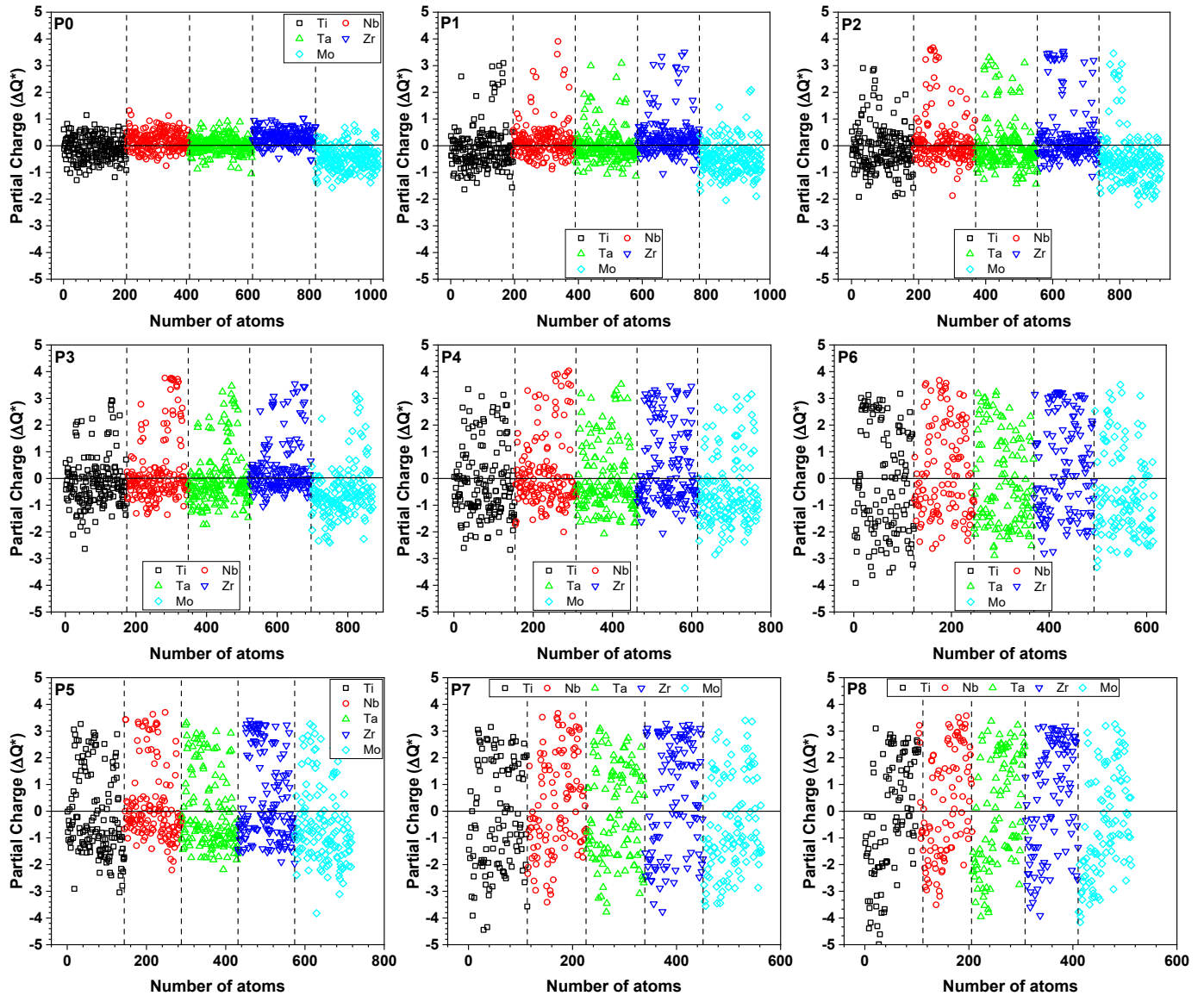


Figure S2. Partial charge of porosity, as determined from porosity models P0-P8.

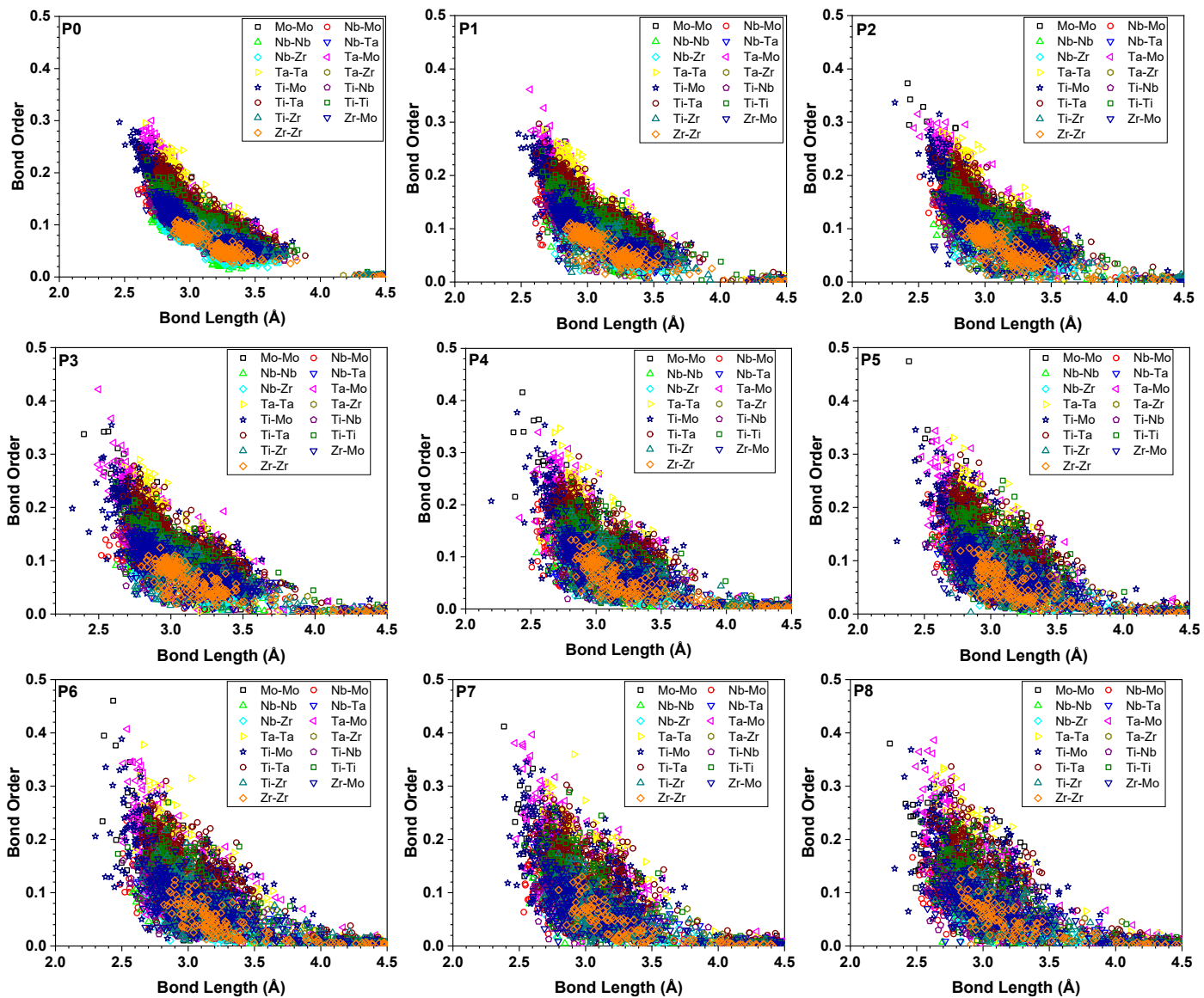


Figure S3. Bond order versus bond length of porosity, as determined from porosity models from P0-P8.

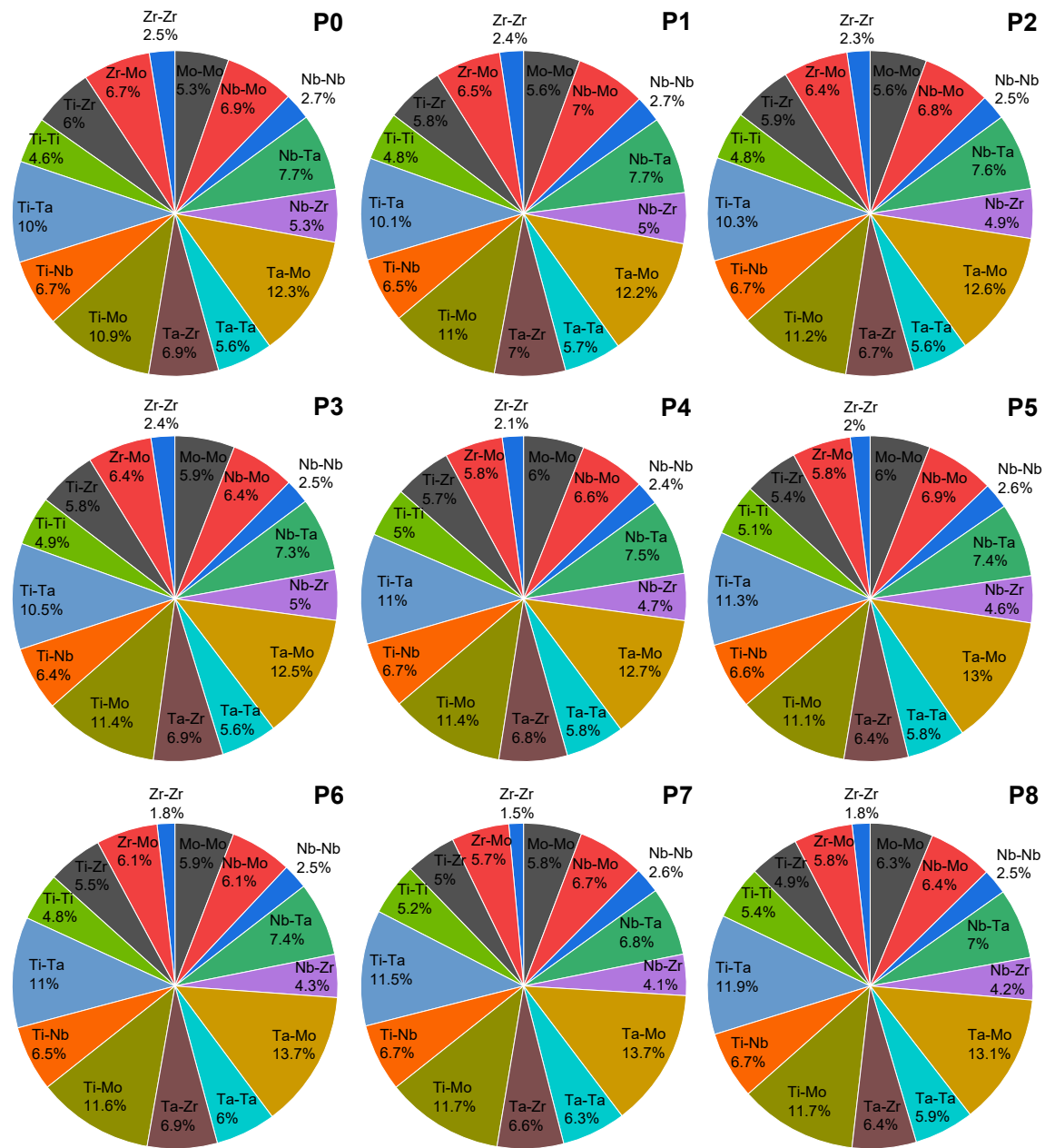


Figure S4. Pair-distribution contributions of each pair, as determined from porosity models, P0-P8.