

Fig. S11 MALDI-TOF MS for MX1-GD3 conjugate **10**. MS analysis of **MX1-NHAcGD3** conjugate **10** showed an average of 180 copies of GD3 on each MX1 particle.

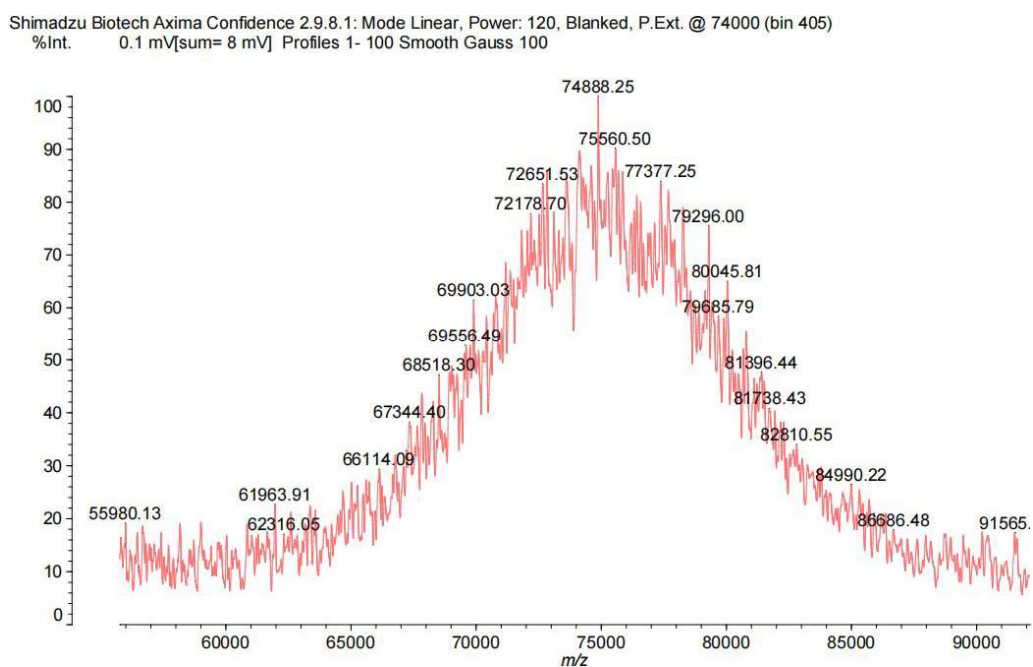


Fig. S12 MALDI-TOF MS characterization of BSA-NHAcGD3 conjugate **12** for ELISA. MS analysis of the conjugate **12** showed that the number of NHAcGD3 per BSA was 8 on average.