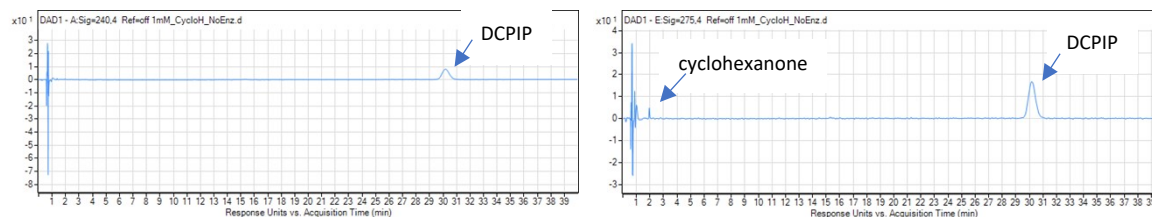
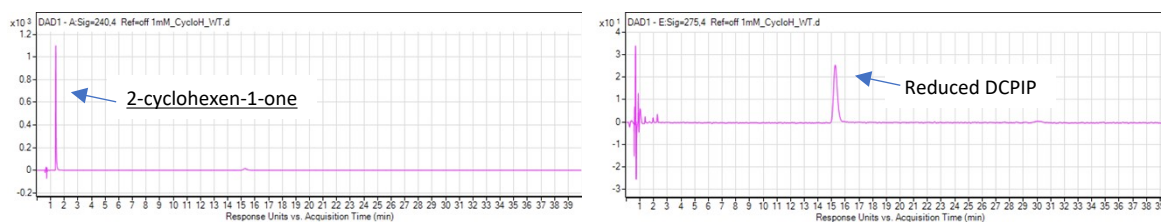


A



B



C

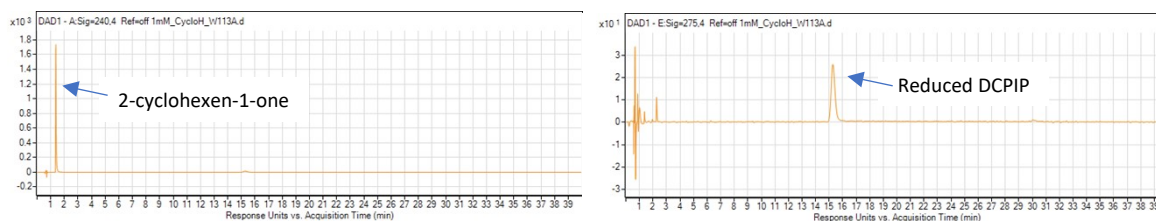


Figure S3. HPLC chromatograms showing incubation of cyclohexanone with DCPIP and no enzyme (A), WT CDH enzyme (B) and the W113A variant (C). Chromatograms were recorded at 240 nm and 275 nm. HPLC analysis of cyclohexanone incubated with DCPIP without enzyme revealed a peak for cyclohexanone at a retention time of 2 minutes and a peak for DCPIP at ~30.1 min. When cyclohexanone was incubated with CDH WT or the W113A variant, the DCPIP was reduced and therefore a change of retention time was observed from ~30.1 min to ~15.2 min and a peak for 2-cyclohexen-1-one was visible at ~1.4 min, confirming product formation. All retention times were compared with the retention times of the standards (Figure S2).