

Supplementary Material

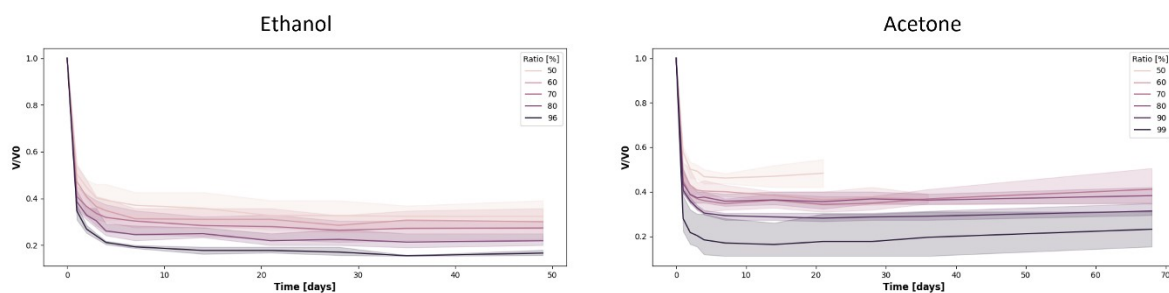


Fig. S1 Volume swelling ratio of jellyfish in solvents. The relative swelling ratio for the volume of jellyfish as a function of time (days) when soaked in various fractions of ethanol (left) and acetone (right) respectively.

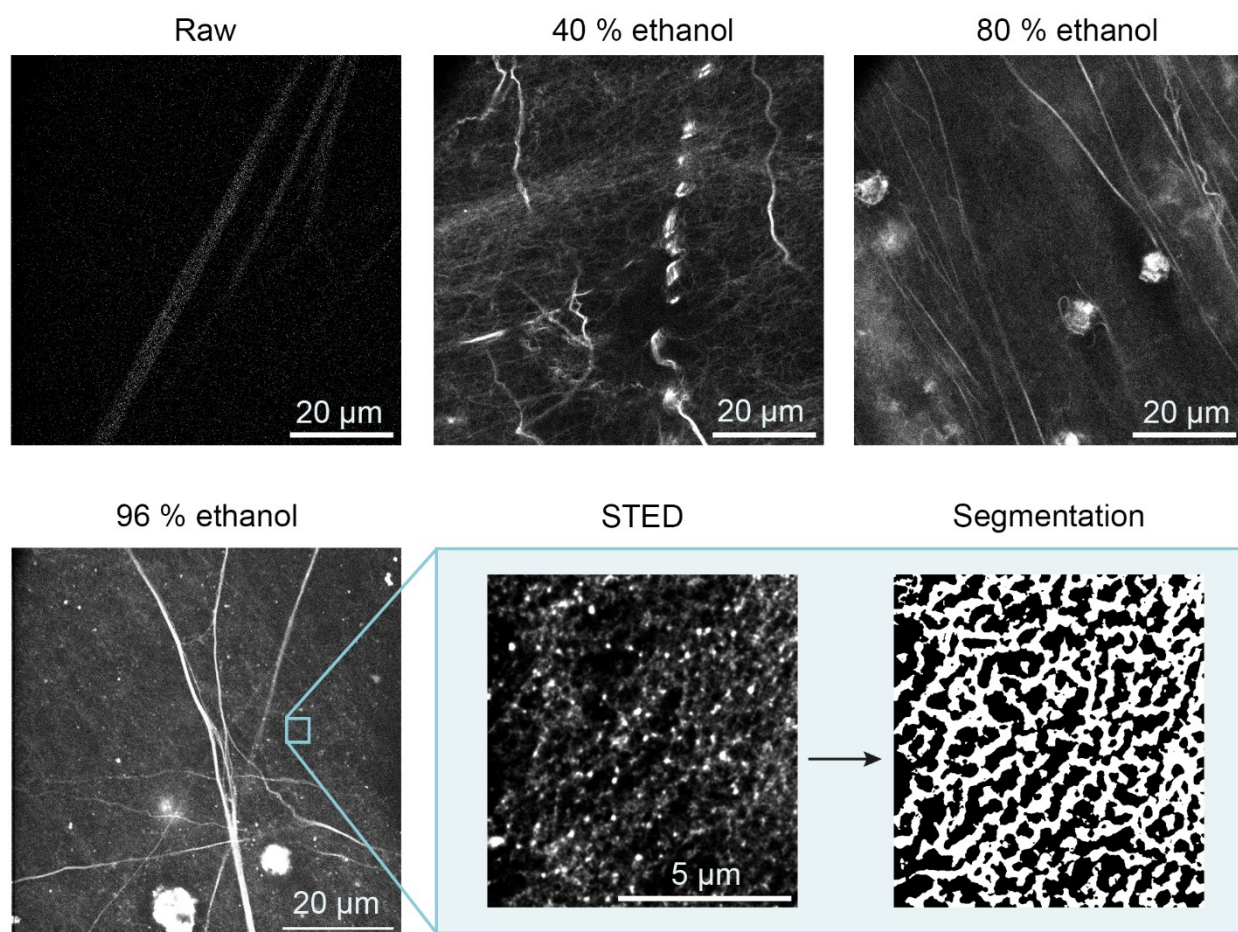


Fig. S2 Representative confocal overview images of raw jellyfish and ethanol-soaked mesoglea. From top left: raw mesoglea, 40% ethanol, 80% ethanol. From bottom left: 96% ethanol, zoom for STED imaging, and corresponding segmentation.

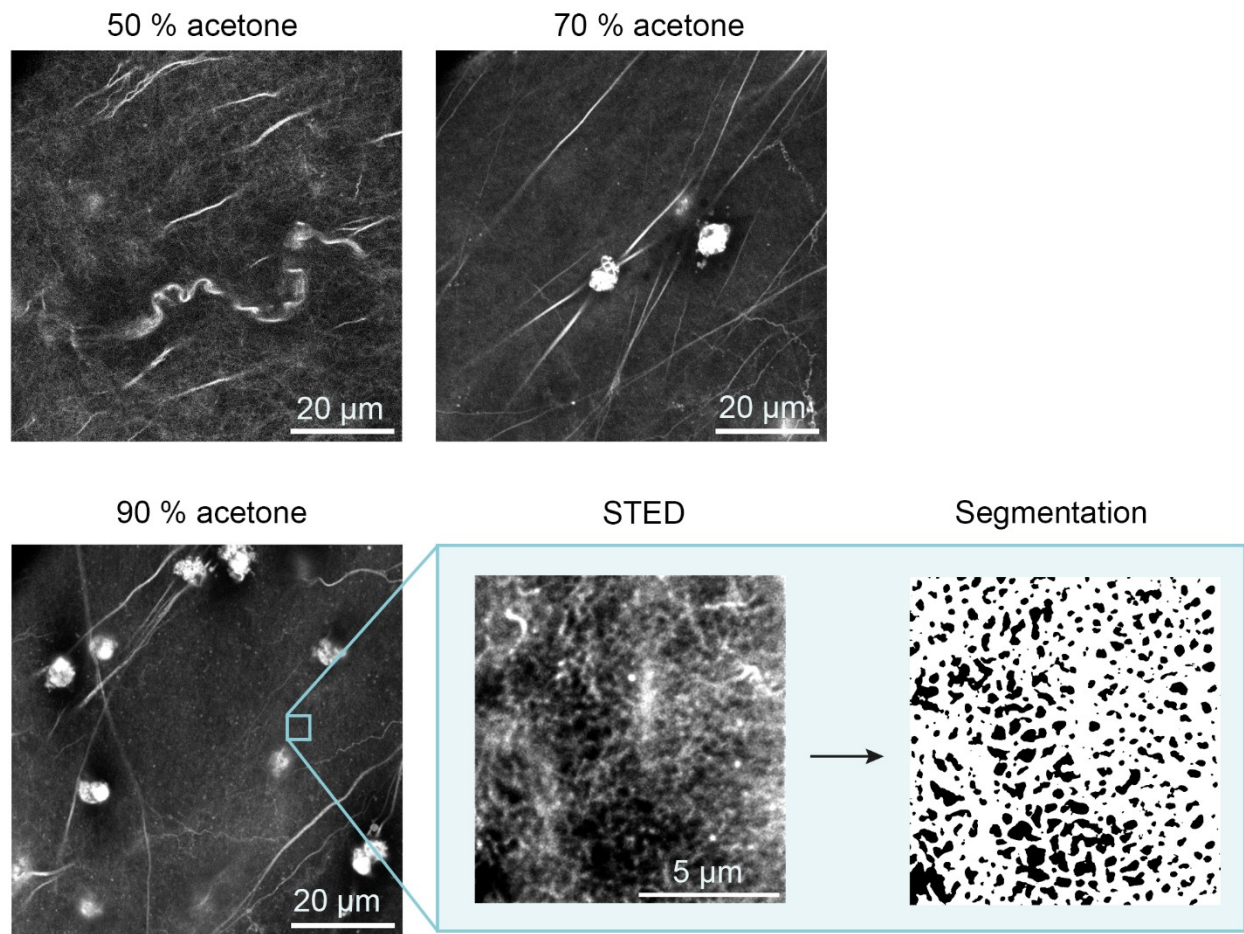


Fig. S3 Representative confocal overview images of acetone-soaked mesoglea. From top left: 50% acetone, 70% acetone. From bottom left: 90% acetone, zoom for STED imaging and corresponding segmentation.