

Supplementary Information

Stability, Biofunctional, and Antimicrobial Characteristics of Cannabidiol -Isolate for the Design of Topical Formulations

Sreejarani Kesavan Pillai,^a Nazia Kera,^{a,b} Phuemele Kleyi,^a Marinda deBeer,^a Matin Magwaza,^c Suprakas Sinha Ray^{a,b*}

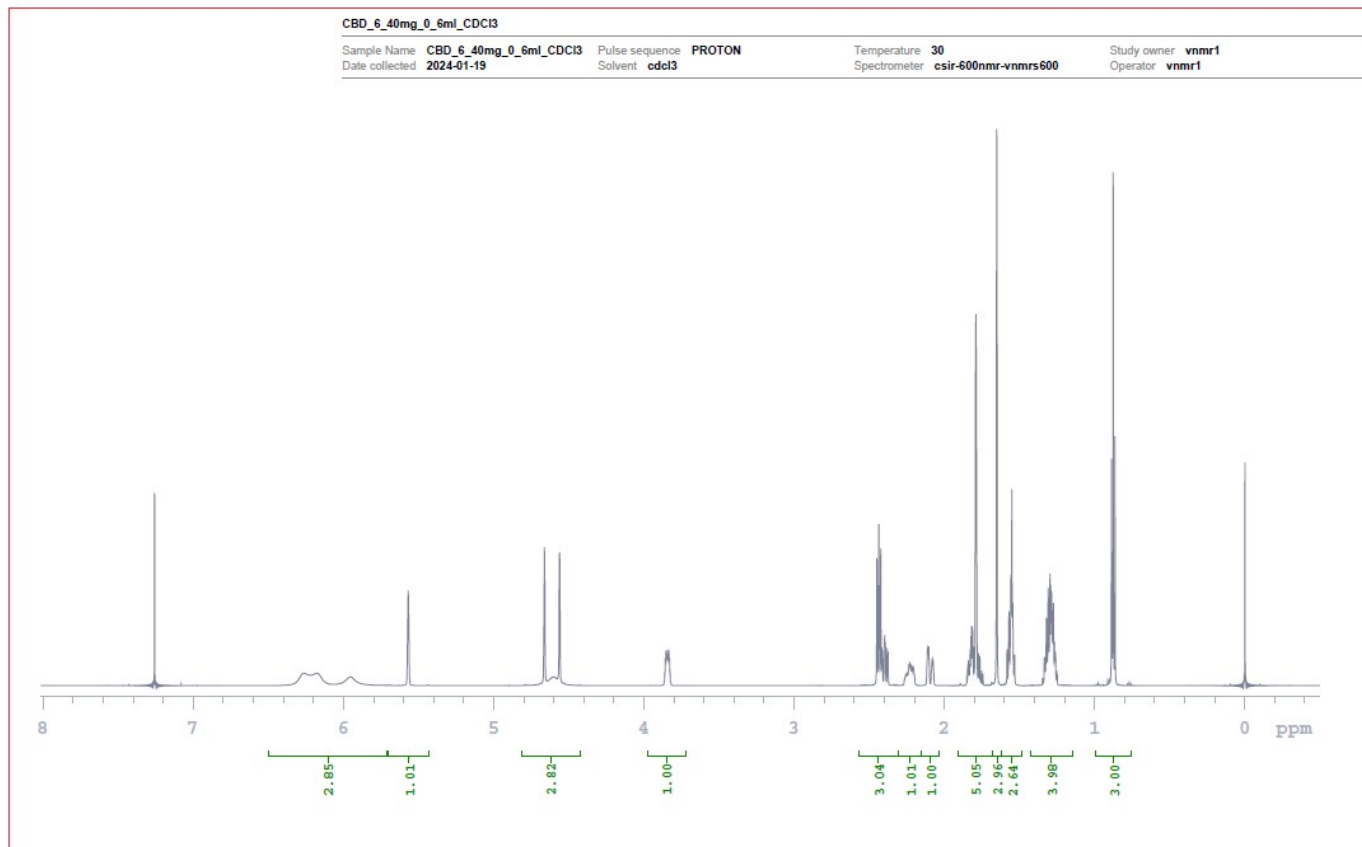
^aCentre for Nanostructures and Advanced Materials, DSI-CSIR Nanotechnology Innovation Centre, Council for Scientific and Industrial Research, Pretoria 0001, South Africa.

Email: rsuprakas@csir.co.za

^bDepartment of Chemical Sciences, University of Johannesburg, Droonfontein 2028, Johannesburg, South Africa. Email: ssinharay@uj.ac.za

^cTautomer Bioscience Pty Ltd., 260 Cradock Ave, Lyttelton Manor, Centurion, 0157, South Africa.

¹H NMR spectrum of CBD-IS



CBD_6_40mg_0_6ml_CDCI3

Sample Name **CBD_6_40mg_0_6ml_CDCI3** Pulse sequence **PROTON** Temperature **30** Study owner **vnmr1**
 Date collected **2024-01-19** Solvent **cdci3** Spectrometer **csir-600nmr-vnmrs600** Operator **vnmr1**

CBD (6.40mg / 0.6ml CDCI3) / 18.01.2024

SAMPLE		wet	n	INTEGRAL VALUES(CONTINUED)				PEAK FREQUENCIES(CONTINUED)		
date		SPECIAL		Integral	start(ppm)	end	value	index	freq(ppm)	intensity
Jan 19 2024				10	2.56984	2.30188	3.039	32	2.37568	6.71764
solvent cdci3				11	2.30188	2.30188	0.000	33	2.26093	1.78604
file /home/vnmr1/vnmrsys/data/CBD_6_40mg_0_6ml_CDCI3_20240118_01/CBD_6_40mg_0_6ml_CDCI3_PROTON_01.fid		temp	30.0	12	2.30188	2.1532	1.009	34	2.25678	2.19732
		gain	48	13	2.1532	2.1532	0.000	35	2.2547	2.12923
		spin	20	14	2.1532	2.03392	0.997	36	2.2521	2.02042
		hst	0.008	15	2.03392	1.90598	0.000	37	2.24847	2.24547
		pw90	6.400	16	1.90598	1.67778	5.049	38	2.24691	2.36444
		alfa	10.000	17	1.67778	1.67778	0.000	39	2.24483	2.27157
		FLAGS		18	1.67778	1.619	2.956	40	2.24224	2.34386
				19	1.619	1.61555	0.003	41	2.23757	3.68832
				20	1.61555	1.48416	2.637	42	2.23549	3.93453
				21	1.48416	1.42365	0.001	43	2.23341	4.05291
				22	1.42365	1.14877	3.976	44	2.23133	4.20138
				23	1.14877	0.98972	0.001	45	2.22874	4.28472
				24	0.98972	0.751145	3.000	46	2.22718	4.23524
		PROCESSING		25	0.751145	-0.49622	0.456	47	2.22199	3.15983
				48				48	2.21887	3.49274
				49				49	2.21732	3.65669
				50				50	2.21524	3.49992
				51				51	2.21264	3.43551
				52				52	2.21005	3.47971
				53				53	2.20797	3.67092
				54				54	2.20641	3.48912
				55				55	2.20381	2.97625
				56				56	2.11295	7.04729
				57				57	2.10879	7.68561
				58				58	2.10464	7.67857
				59				59	2.08283	4.7288
				60				60	2.07868	5.06894
				61				61	2.07452	4.78876
				62				62	1.85021	1.86842
				63				63	1.84502	3.50049
				64				64	1.84035	4.94209
				65				65	1.83568	4.30479
				66				66	1.82841	6.98674
				67				67	1.82373	9.68896
				68				68	1.81854	11.7216
				69				69	1.81283	11.4459
				70				70	1.80971	6.53811
				71				71	1.804	7.62622
				72				72	1.7905	72.872
				73				73	1.77389	6.36044
				74				74	1.77181	5.67513
				75				75	1.76506	5.76716
				76				76	1.76298	5.15783
				77				77	1.75208	2.97686
				78				78	1.74377	2.32771
				79				79	1.65187	109.266
				80				80	1.58333	7.1148
				81				81	1.57035	14.6051
				82				82	1.55736	21.723

INTEGRAL VALUES		PEAK FREQUENCIES				
Integral	start(ppm)	end	value	index	freq(ppm)	intensity
1	8.01045	6.49258	0.330	1	7.25652	37.8232
2	6.49258	5.70827	2.854	2	6.26321	2.43232
3	5.70827	5.70279	0.002	3	6.1765	2.45022
4	5.70279	5.42856	1.015	4	5.95271	1.72718
5	5.42856	4.81163	0.000	5	5.56847	18.4486
6	4.81163	4.41893	2.822	6	4.66448	19.8845
7	4.41893	3.97029	-0.000	7	4.66189	27.1095
8	3.97029	3.72019	1.003	8	4.65877	20.5263
9	3.72019	2.56984	-0.000	9	4.59906	1.7029
				10	4.56271	25.8963
				11	4.56167	26.1274
				12	3.8607	2.63397
				13	3.85707	5.35242
				14	3.85343	6.75183
				15	3.85032	6.91113
				16	3.84668	6.1715
				17	3.84357	5.17786
				18	3.83993	6.30112
				19	3.8363	7.09898
				20	3.83318	6.83521
				21	3.82955	5.41173
				22	3.82591	2.68129
				23	2.44941	25.0256
				24	2.43643	31.6729
				25	2.42345	26.909
				26	2.41774	7.53032
				27	2.41203	6.91656
				28	2.39801	9.89283
				29	2.39489	8.74589
				30	2.39282	8.48719
				31	2.38087	7.32583

CBD_6_40mg_0_6ml_CDCl3

Sample Name **CBD_6_40mg_0_6ml_CDCl3** Pulse sequence **PROTON** Temperature **30** Study owner **vnmr1**
 Date collected **2024-01-19** Solvent **cdcl3** Spectrometer **csir-600nmr-vnmrs600** Operator **vnmr1**

PEAK FREQUENCIES(CONTINUED)

index	freq(ppm)	intensity
83	1.55113	38.5026
84	1.54542	16.2651
85	1.53244	8.1037
86	1.34707	1.48511
87	1.34344	1.47191
88	1.33513	5.60064
89	1.3315	5.52299
90	1.32111	13.2532
91	1.30969	19.1585
92	1.29878	20.367
93	1.29723	21.9546
94	1.29255	19.8184
95	1.28736	18.6574
96	1.27853	10.4299
97	1.27438	16.1969
98	1.26711	8.60707
99	1.26192	6.67683
100	1.25257	2.51454
101	1.24894	2.23341
102	0.888067	44.5143
103	0.876644	100.72
104	0.864701	48.9224
105	0.00536304	1.81135
106	-0.000348576	43.8032
107	-0.00554095	1.78747

Melting point of CBD-IS

	#1	#2	#3	Average	Std Dev
Mp (°C)	68.4	68.6	68.7	68.6	0.2

Instrument details: Buchi Melting Point M-565