

Supporting Information

Systematic copolymer screening for foaming experiments

*Patrick Endres, Timo Schuett, Christian Brütting, Julian Kimmig, Rodrigo Q. Albuquerque,
Tobias Standau, Stefan Zechel, Holger Ruckdäschel*, Ulrich S. Schubert**

P. Endres, T. Schuett, J. Kimmig, Dr. S. Zechel, Prof. Dr. U. S. Schubert
Laboratory of Organic and Macromolecular Chemistry (IOMC)
Friedrich Schiller University Jena, Humboldtstr. 10, 07743 Jena (Germany)
E-Mail: ulrich.schubert@uni-jena.de; www.schubert-group.de

P. Endres, T. Schuett, J. Kimmig Dr. S. Zechel, Prof. Dr. U. S. Schubert
Jena Center for Soft Matter (JCSM)
Friedrich Schiller University Jena, Philosophenweg 7, 07743 Jena (Germany)

C. Brütting, R. Q. Albuquerque, Dr.-Ing. T. Standau, Prof. Dr.-Ing. H. Ruckdäschel
Department of Polymer Engineering
University of Bayreuth, Universitätsstr. 30, 95447 Bayreuth (Germany)
E-Mail: Holger.Ruckdaeschel@uni-bayreuth.de; www.polymer-engineering.de

Table of contents

1) ^1H NMR spectra	S3 – S20
2) SEC Elugrams	S21 – S38

¹H NMR spectra

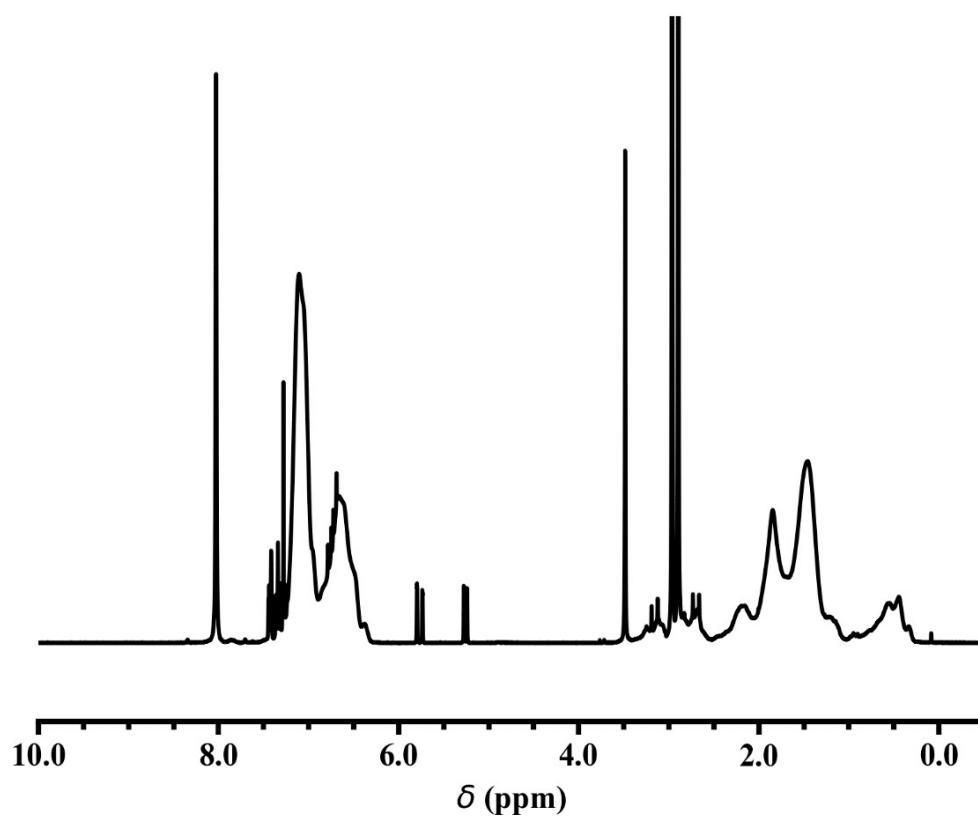


Figure S1. ¹H NMR spectrum of polymer **P1** (300 MHz, CDCl₃).

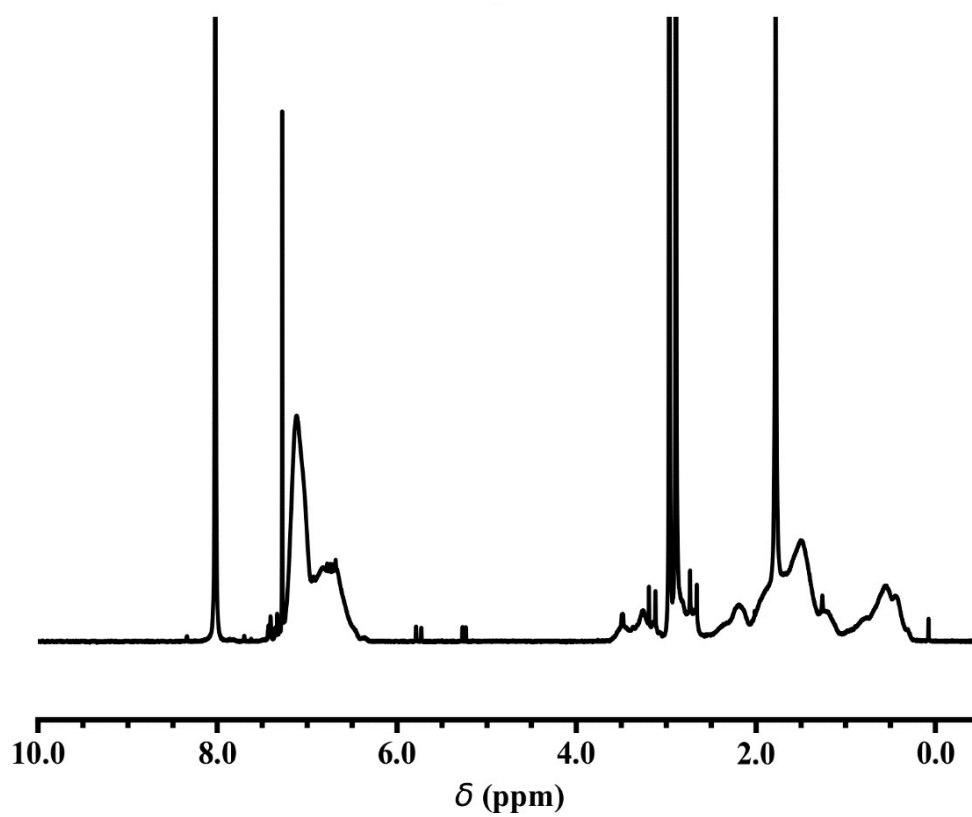


Figure S2. ¹H NMR spectrum of polymer **P2** (300 MHz, CDCl₃).

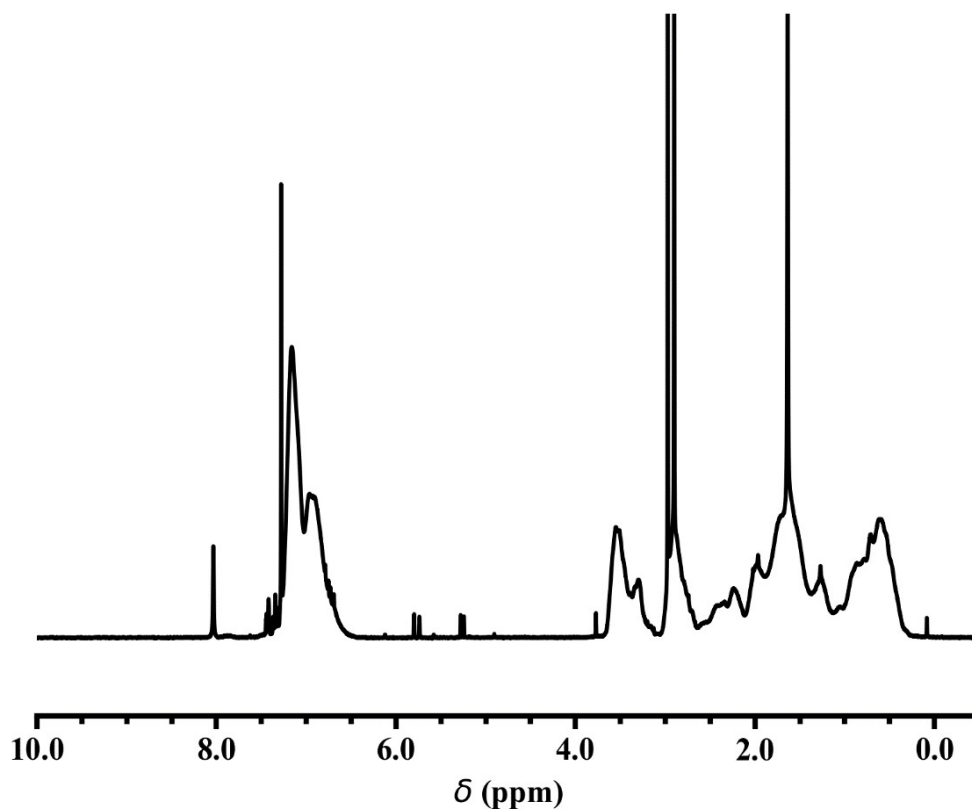


Figure S3. ¹H NMR spectrum of polymer P3 (300 MHz, CDCl₃).

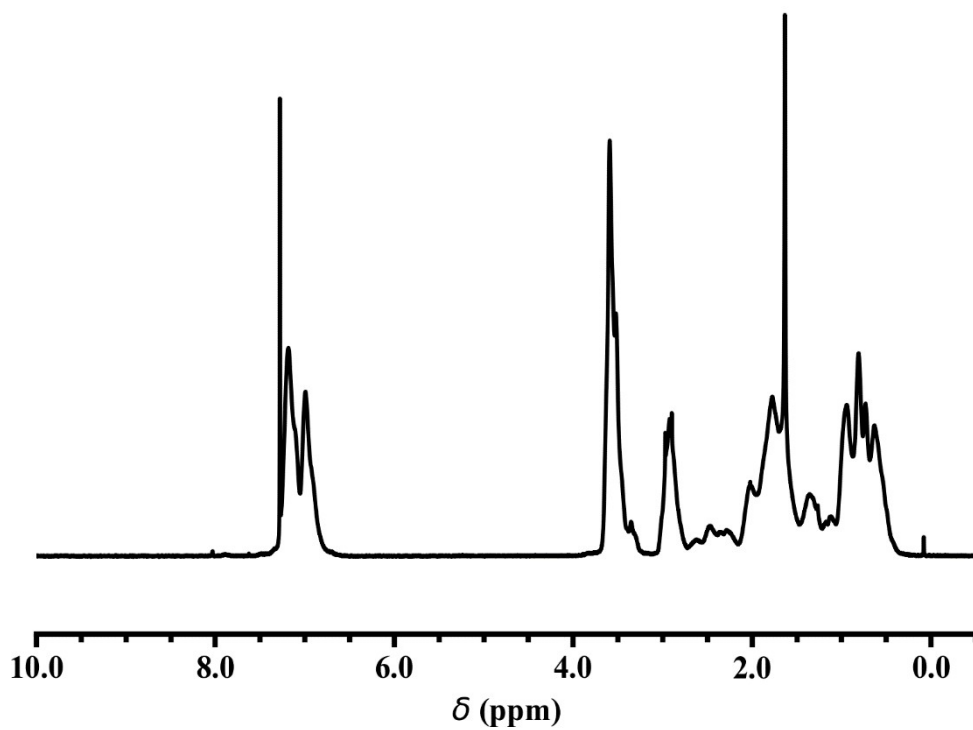


Figure S4. ¹H NMR spectrum of polymer P4 (300 MHz, CDCl₃).

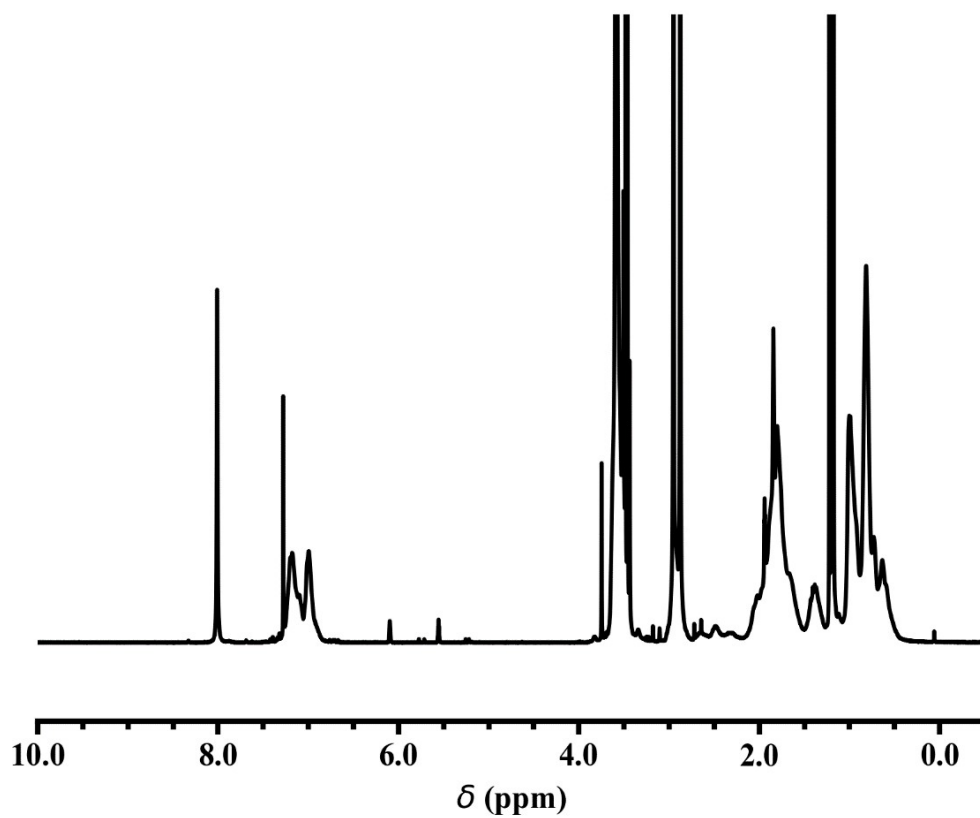


Figure S5. ¹H NMR spectrum of polymer **P5** (300 MHz, CDCl₃).

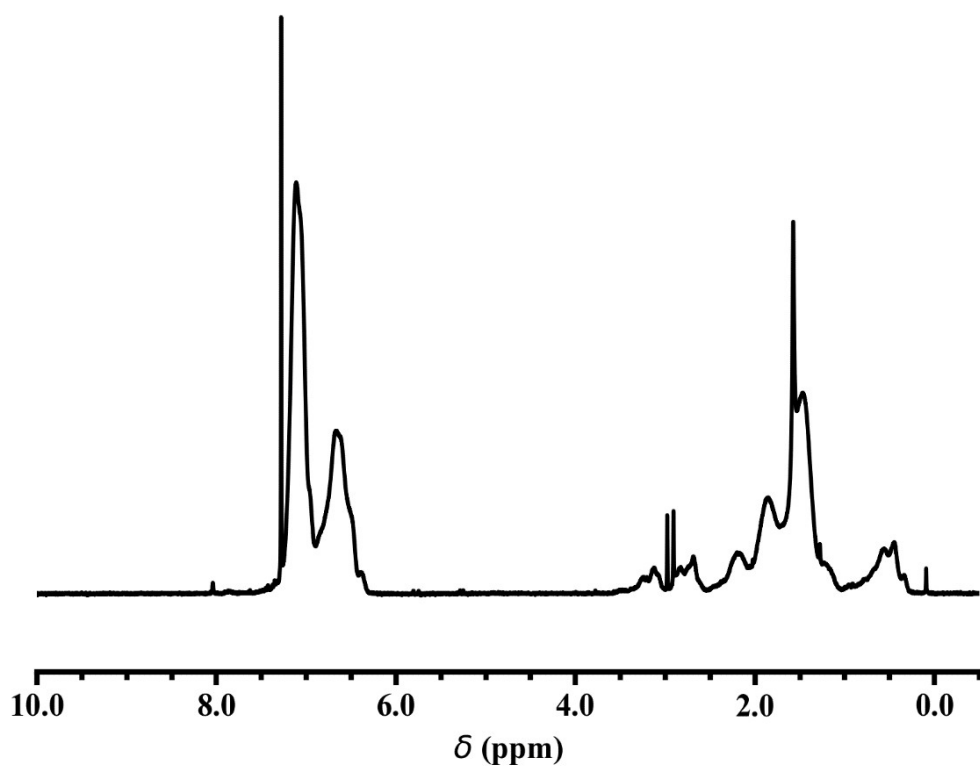


Figure S6. ¹H NMR spectrum of polymer **P6** (300 MHz, CDCl₃).

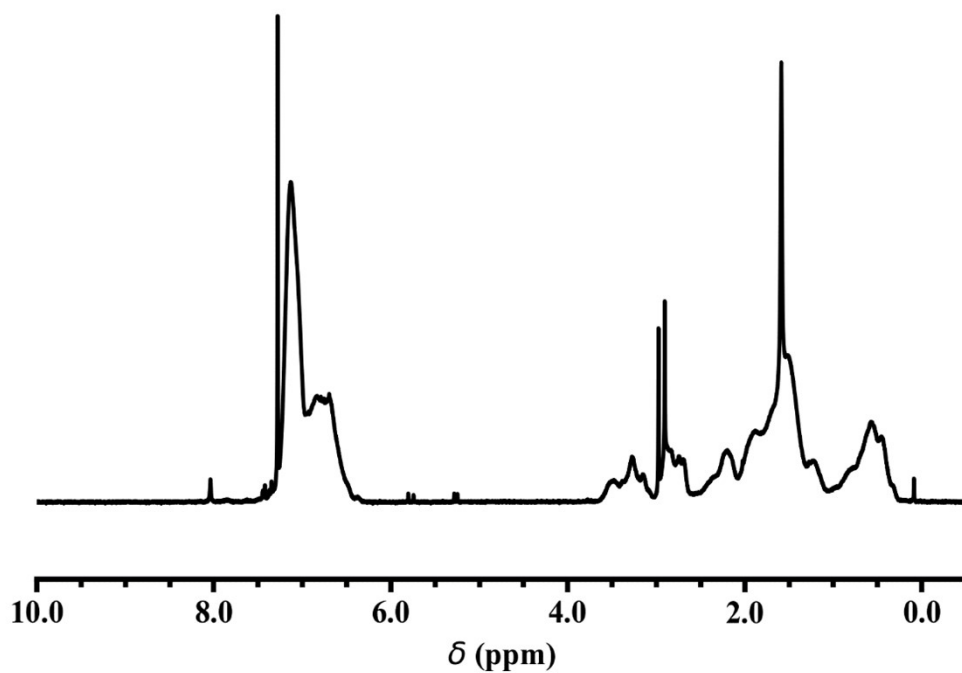


Figure S7. ¹H NMR spectrum of polymer **P7** (300 MHz, CDCl₃).

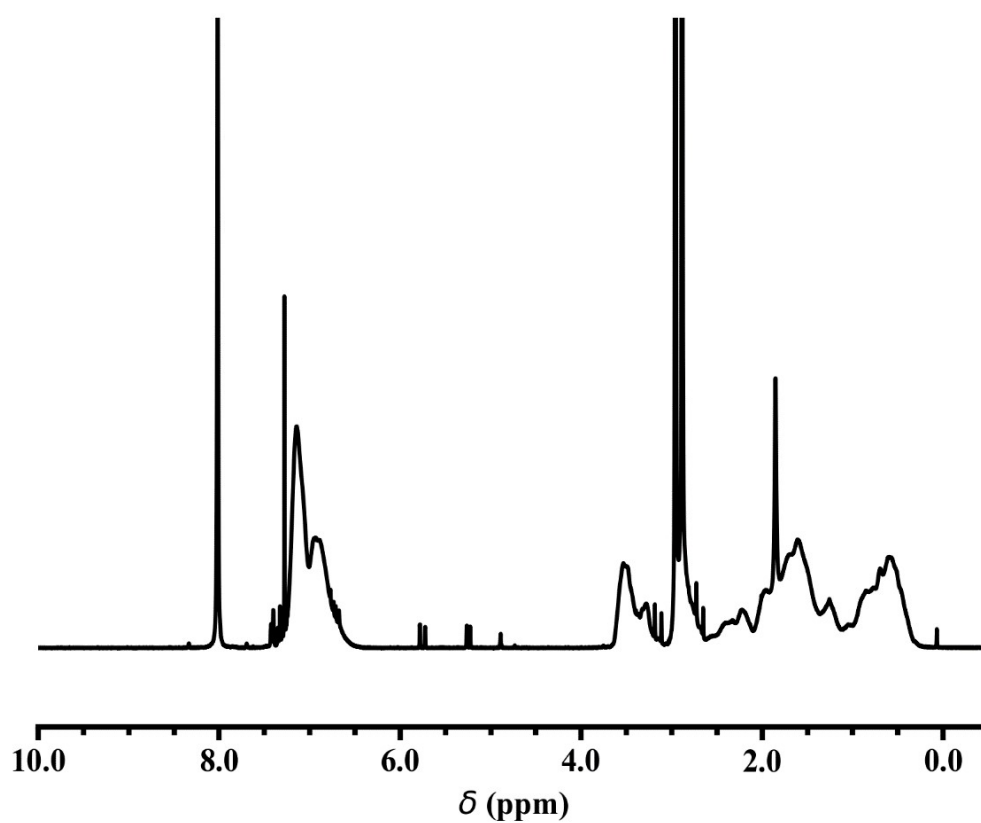


Figure S8. ¹H NMR spectrum of polymer **P8** (300 MHz, CDCl₃).

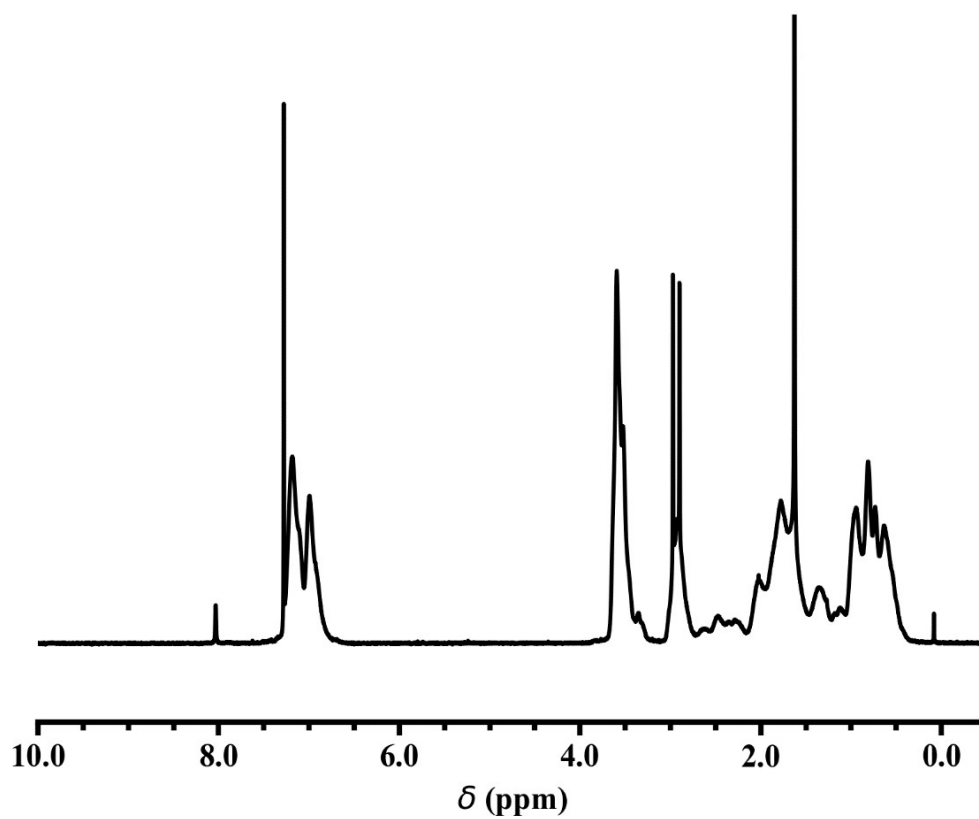


Figure S9. ¹H NMR spectrum of polymer **P9** (300 MHz, CDCl₃).

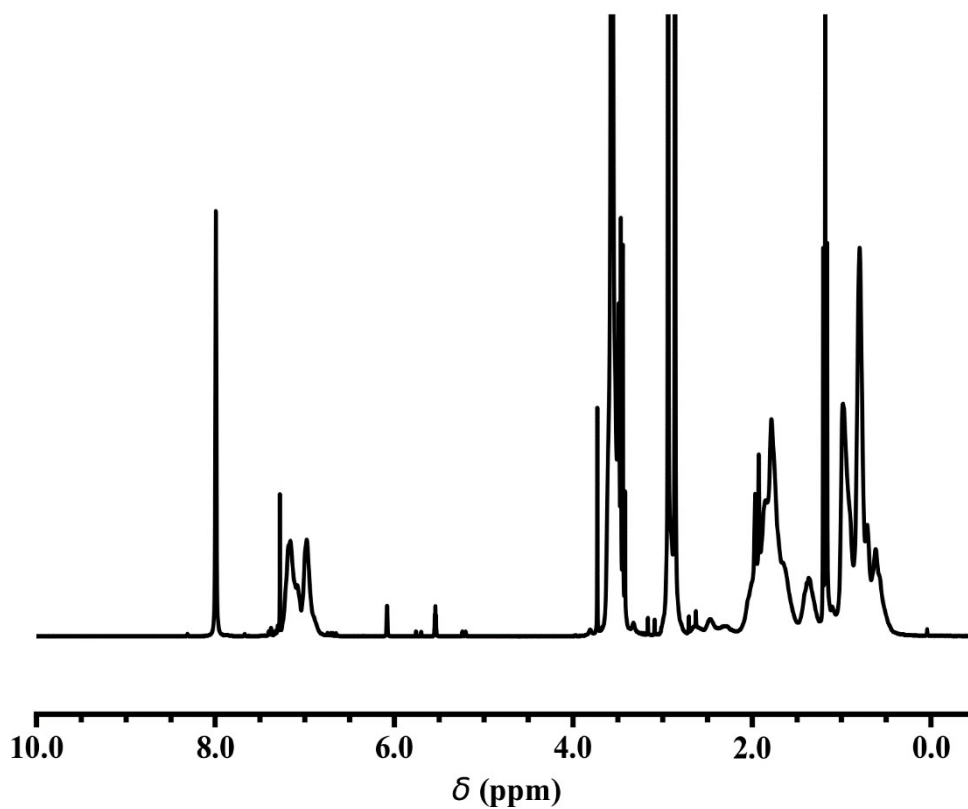


Figure S10. ¹H NMR spectrum of polymer **P10** (300 MHz, CDCl₃).

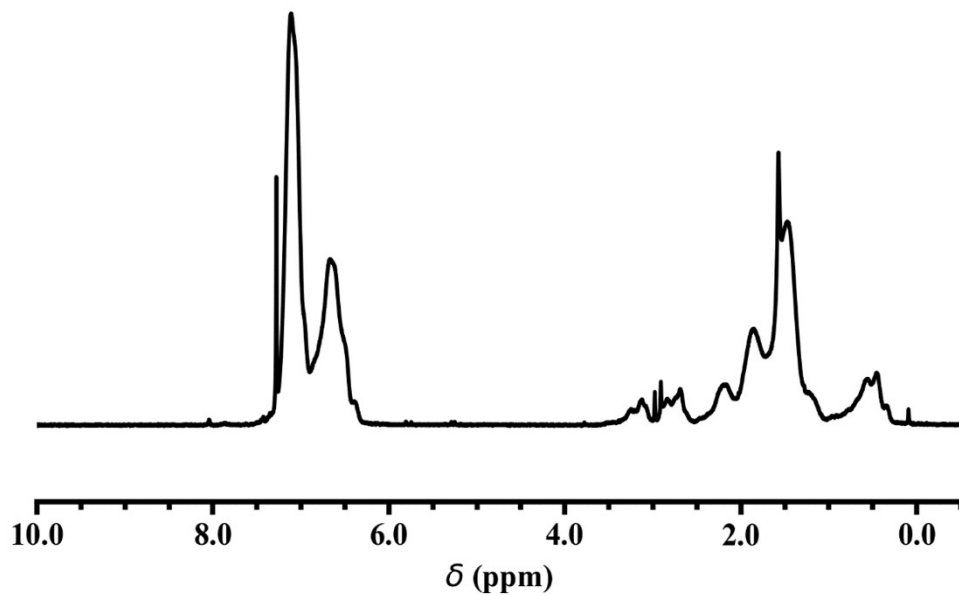


Figure S11. ¹H NMR spectrum of polymer **P11** (300 MHz, CDCl₃).

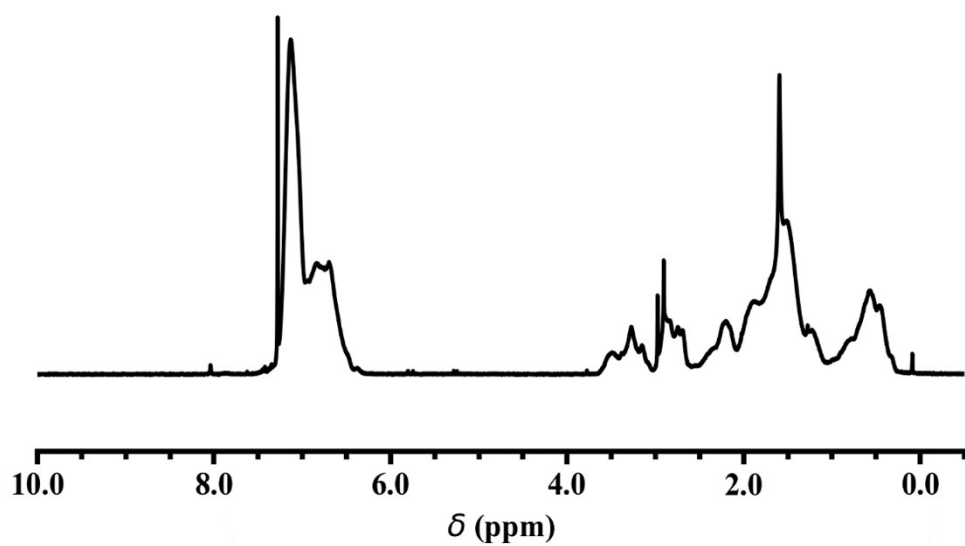


Figure S12. ¹H NMR spectrum of polymer **P12** (300 MHz, CDCl₃).

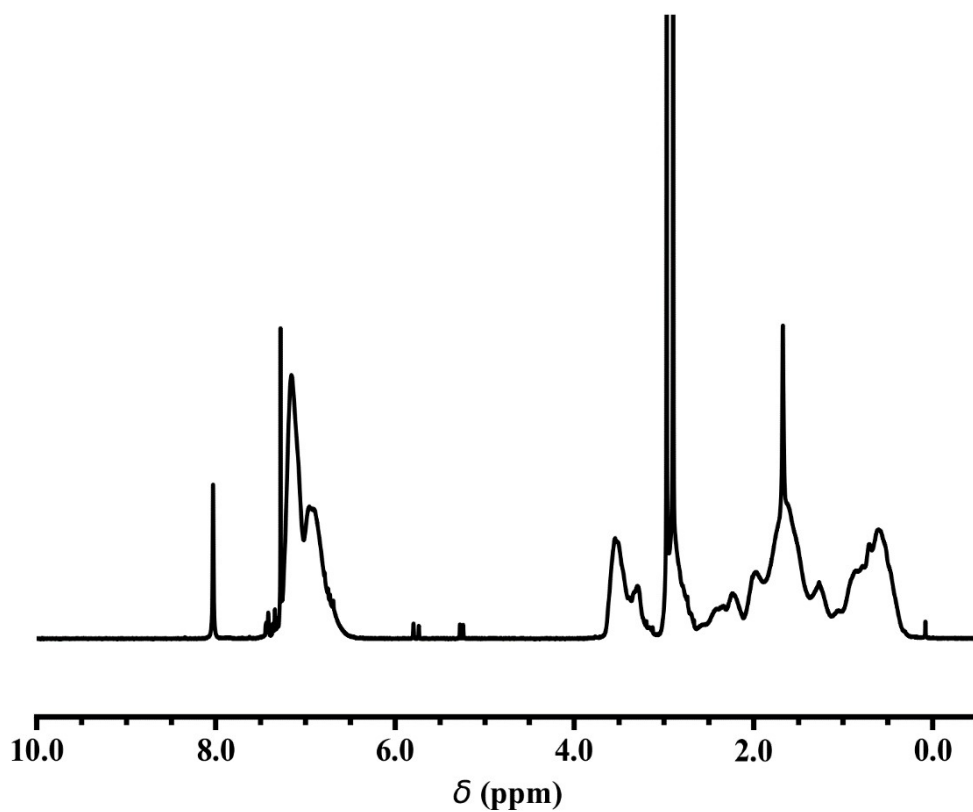


Figure S13. ¹H NMR spectrum of polymer **P13** (300 MHz, CDCl₃).

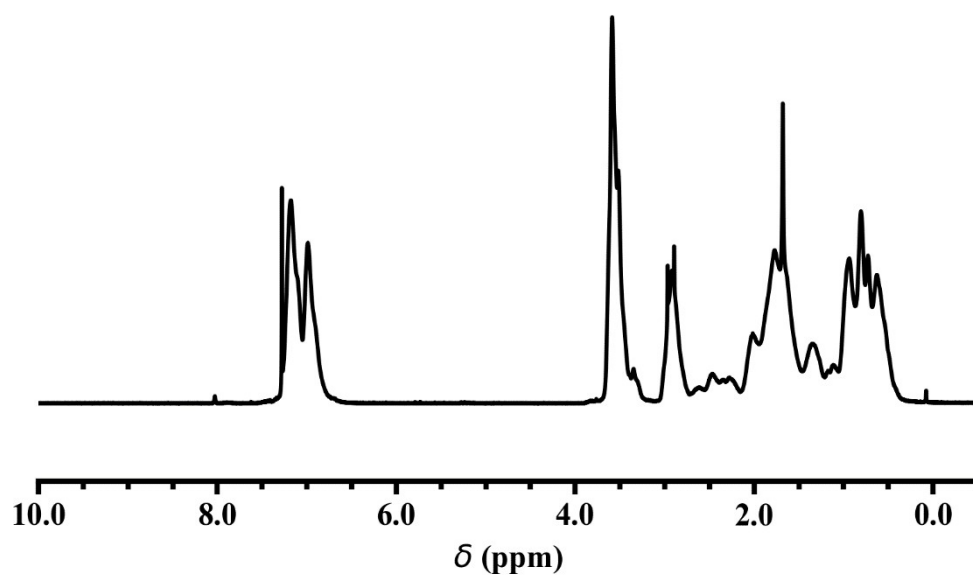


Figure S14. ¹H NMR spectrum of polymer **P14** (300 MHz, CDCl₃).

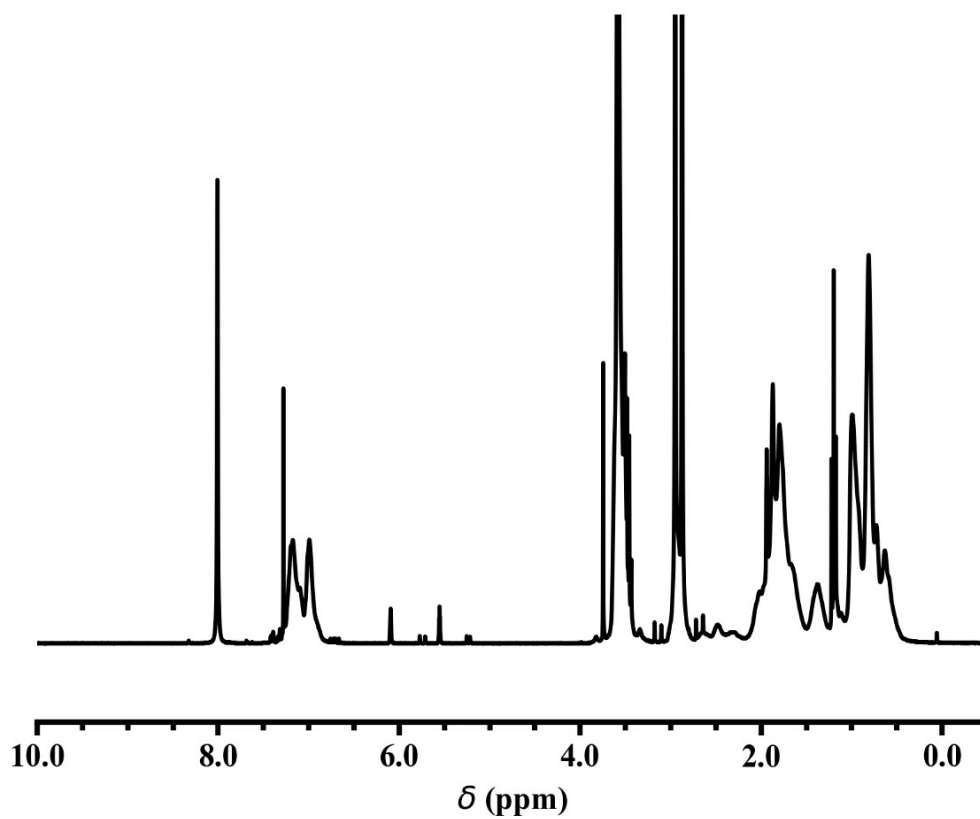


Figure S15. ¹H NMR spectrum of polymer P15 (300 MHz, CDCl₃).

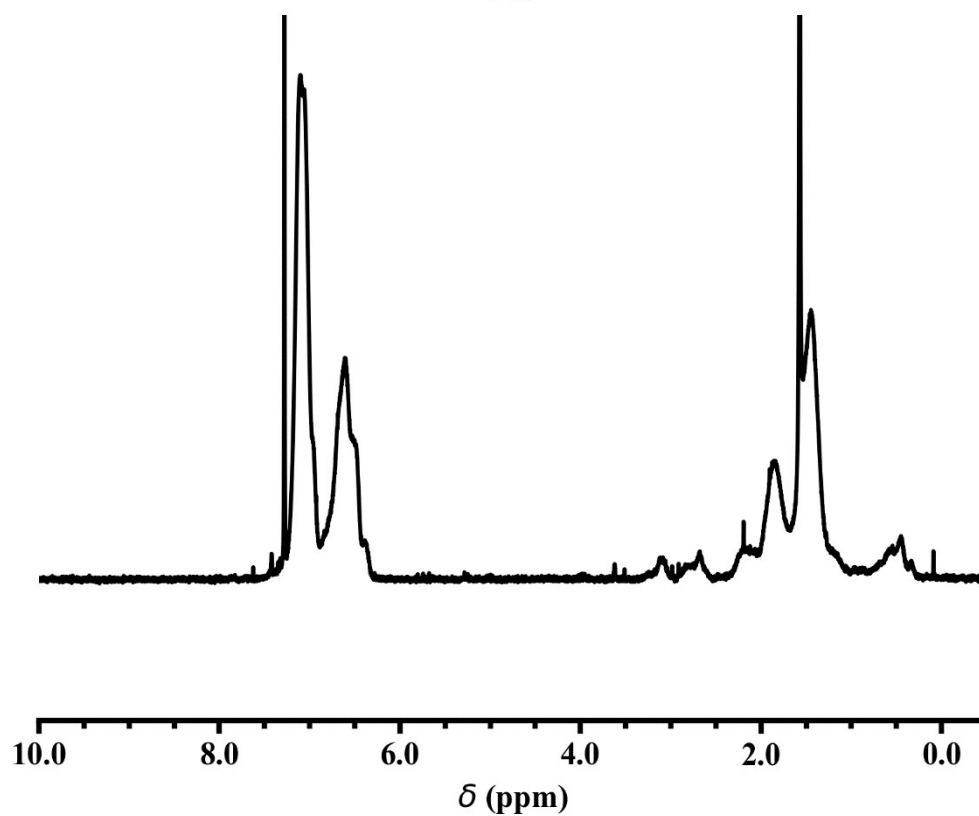


Figure S16. ¹H NMR spectrum of polymer P16 (300 MHz, CDCl₃).

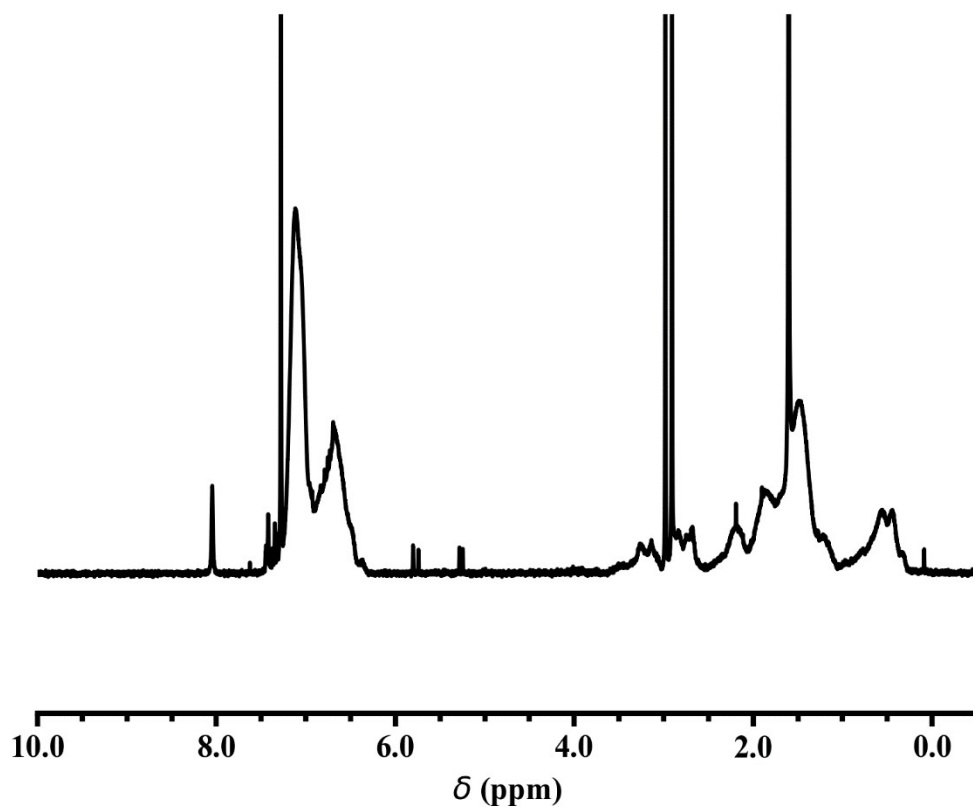


Figure S17. ¹H NMR spectrum of polymer P17 (300 MHz, CDCl₃).

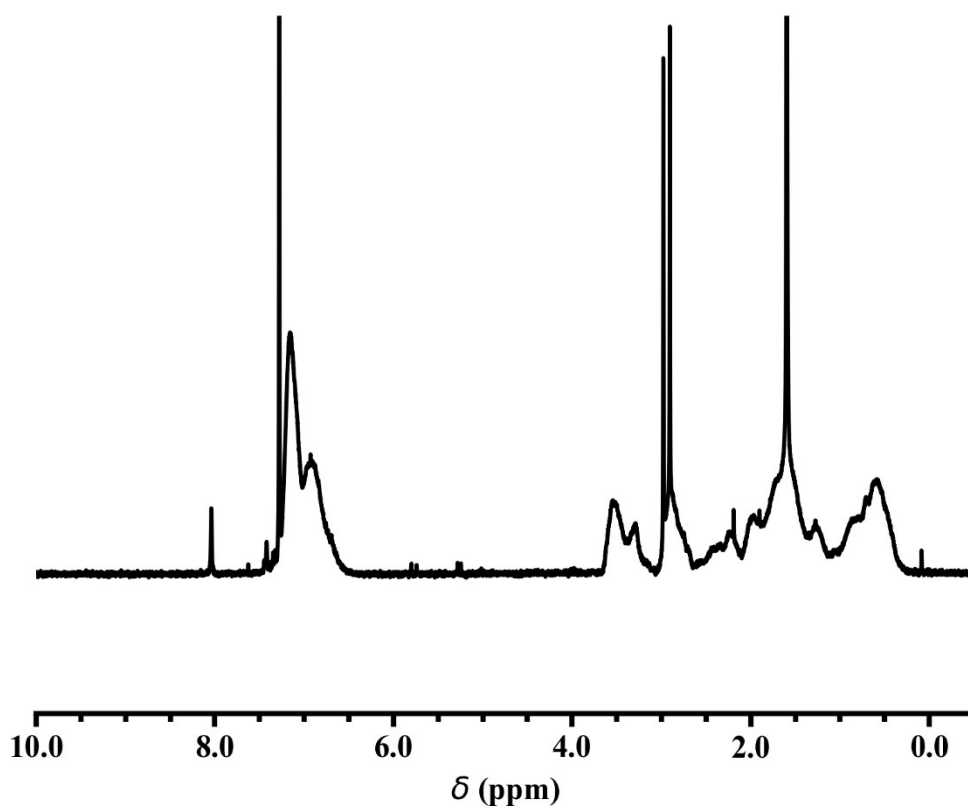


Figure S18. ¹H NMR spectrum of polymer P18 (300 MHz, CDCl₃).

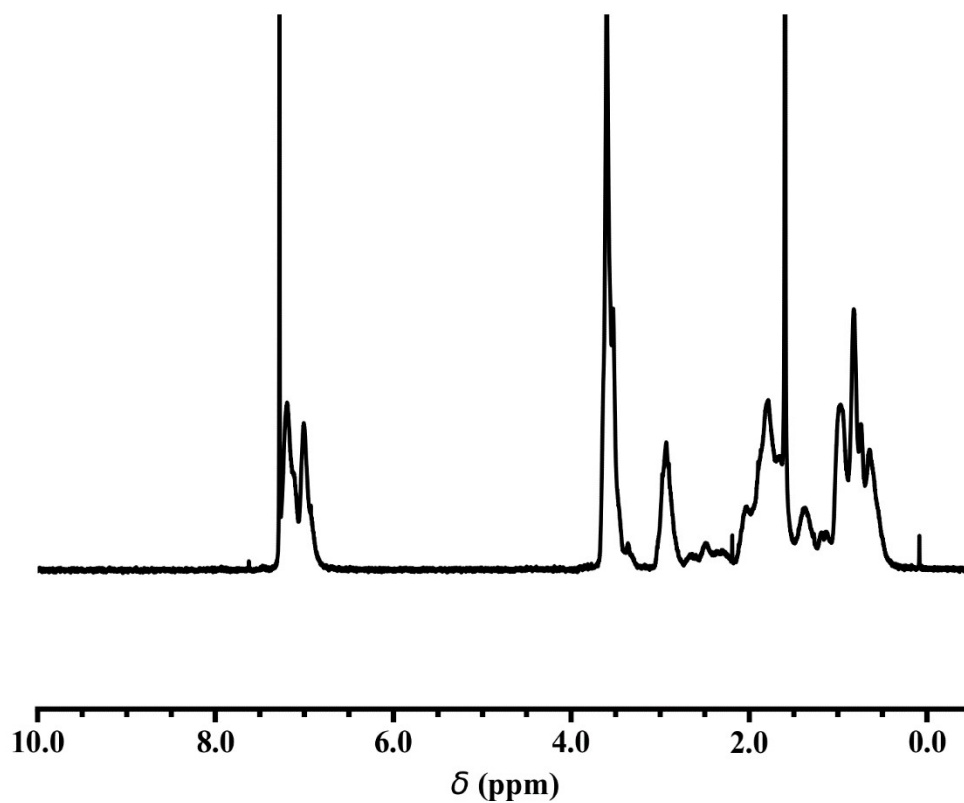


Figure S19. ¹H NMR spectrum of polymer P19 (300 MHz, CDCl₃).

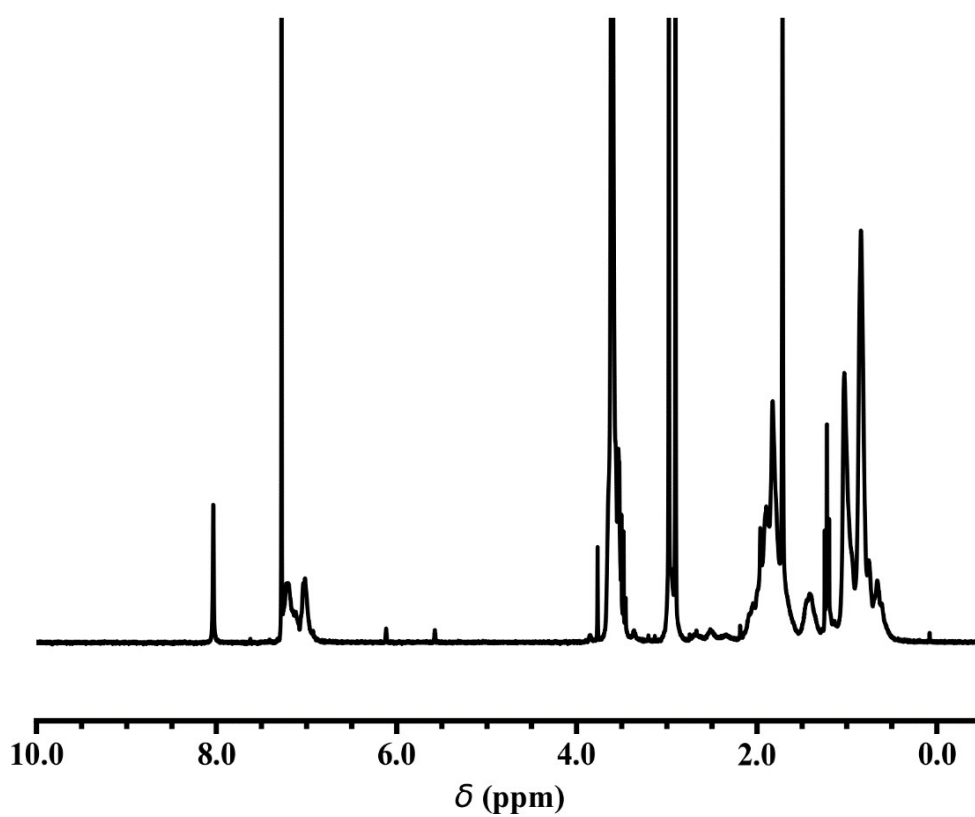


Figure S20. ¹H NMR spectrum of polymer P20 (300 MHz, CDCl₃).

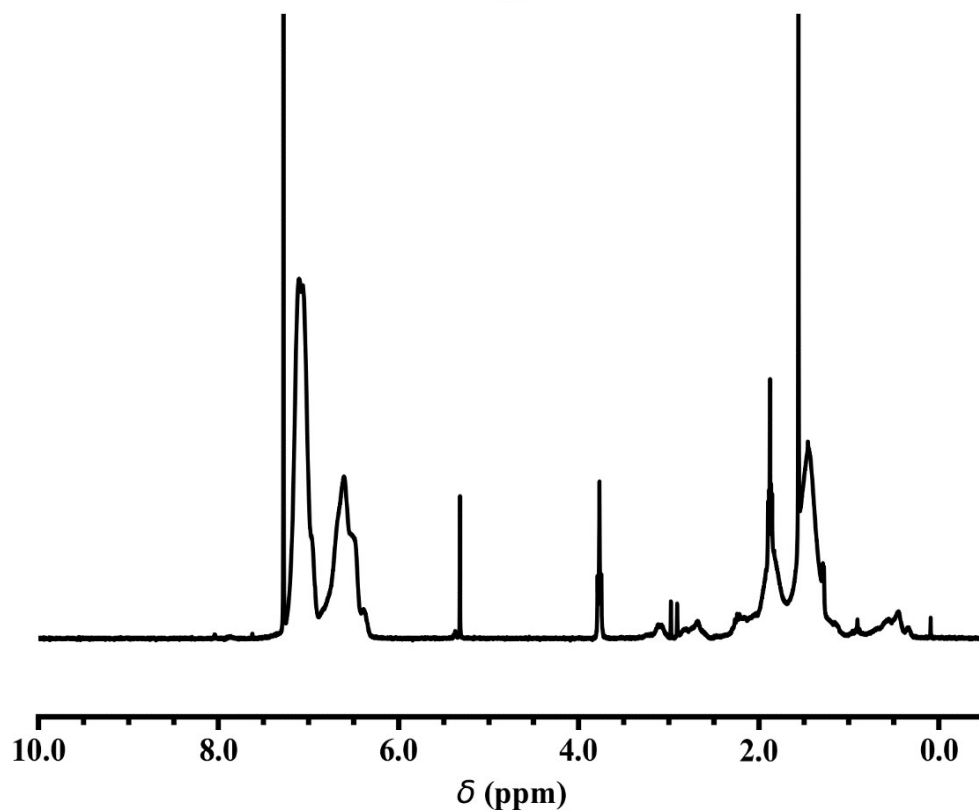


Figure S21. ^1H NMR spectrum of polymer U1 (300 MHz, CDCl_3).

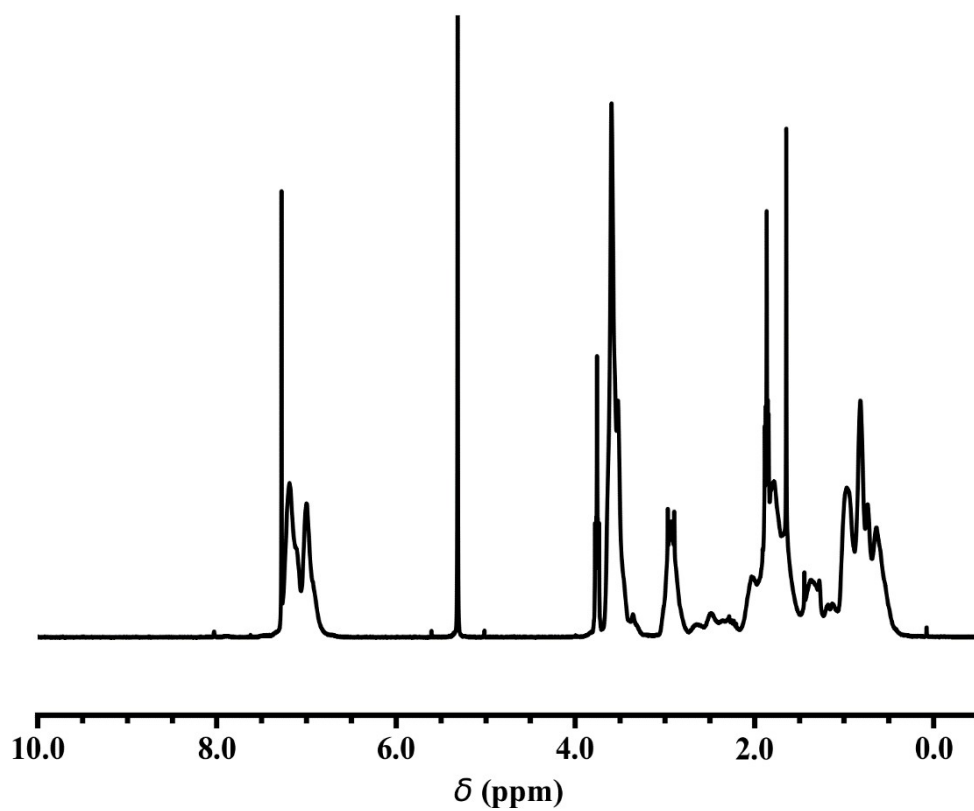


Figure S22. ^1H NMR spectrum of polymer U2 (300 MHz, CDCl_3).

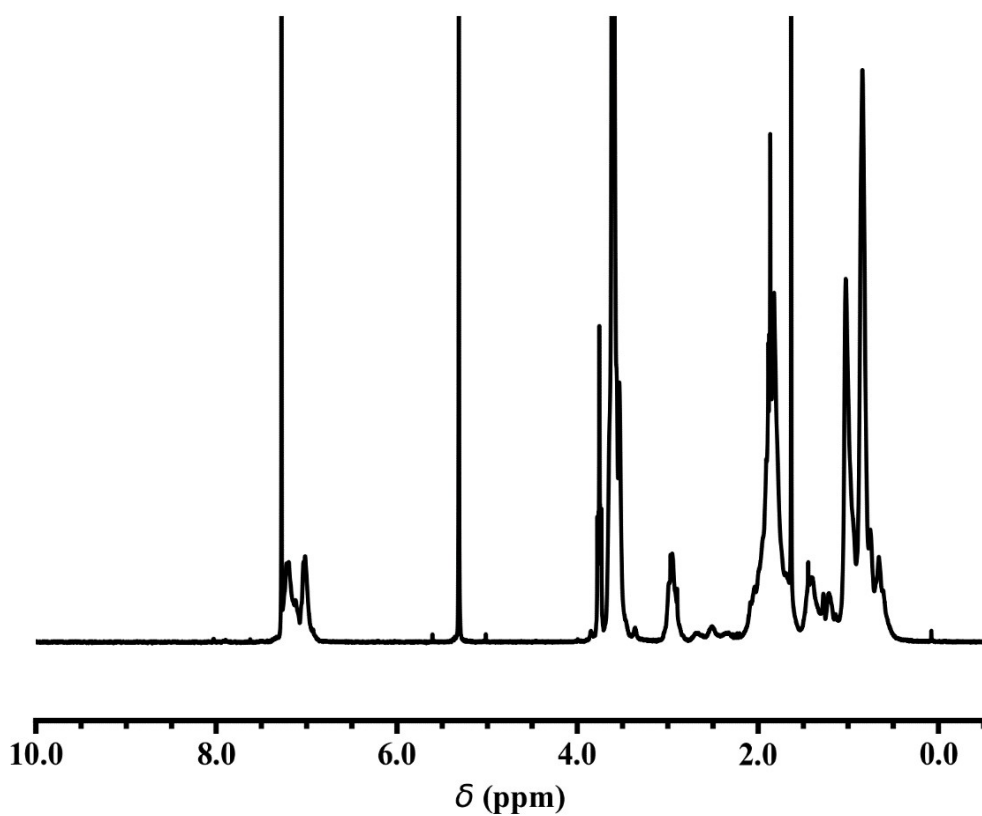


Figure S23. ¹H NMR spectrum of polymer U3 (300 MHz, CDCl₃).

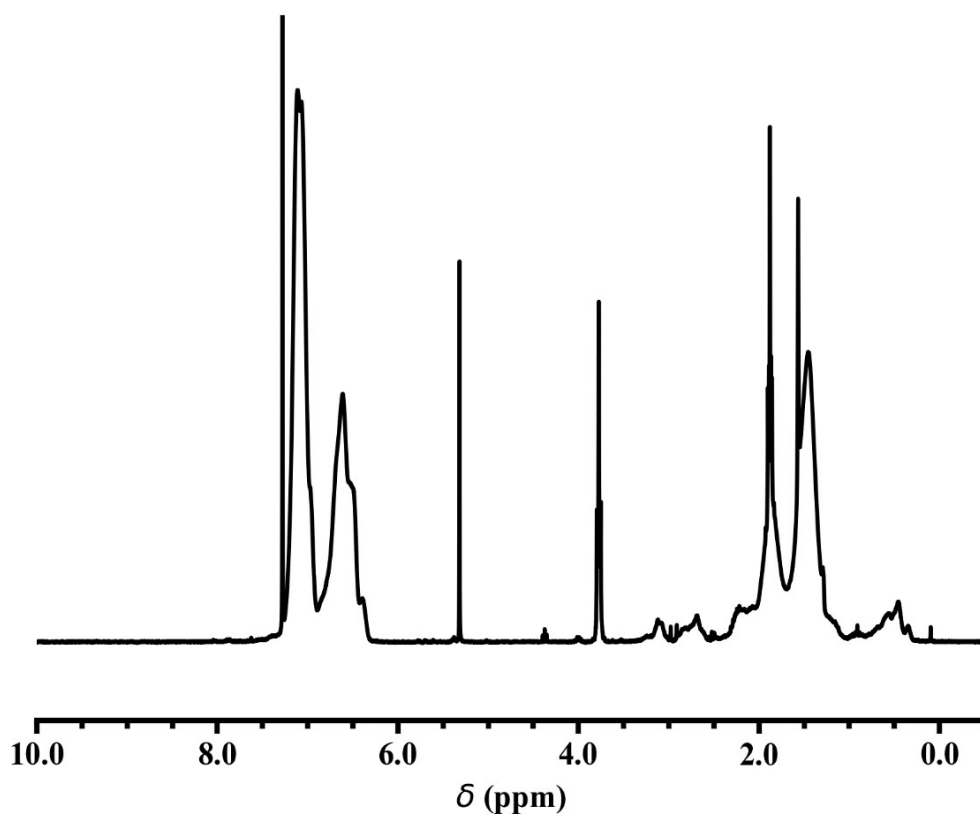


Figure S24. ¹H NMR spectrum of polymer U4 (300 MHz, CDCl₃).

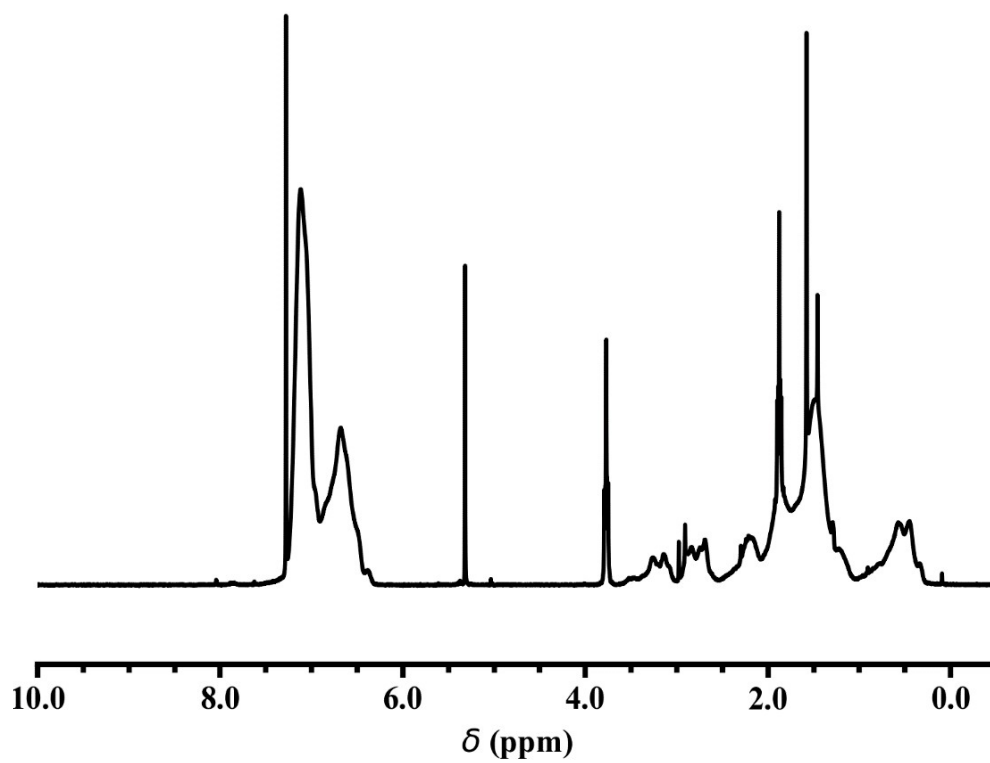


Figure S25. ^1H NMR spectrum of polymer U5 (300 MHz, CDCl_3).

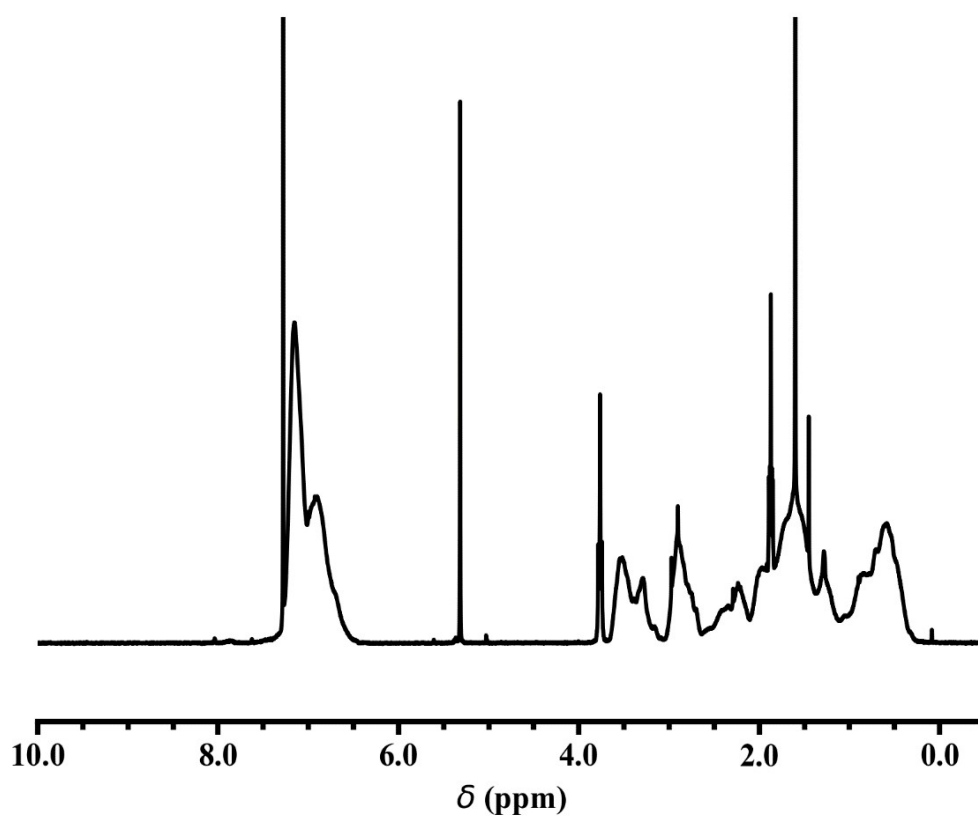


Figure S26. ^1H NMR spectrum of polymer U6 (300 MHz, CDCl_3).

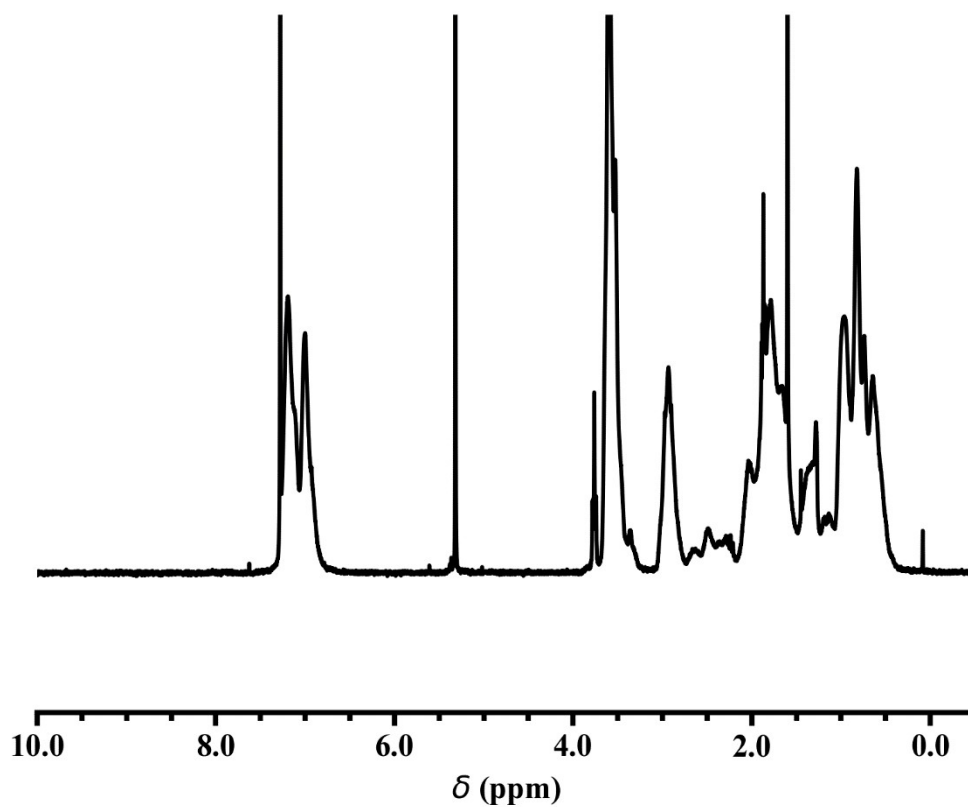


Figure S27. ^1H NMR spectrum of polymer U7 (300 MHz, CDCl_3).

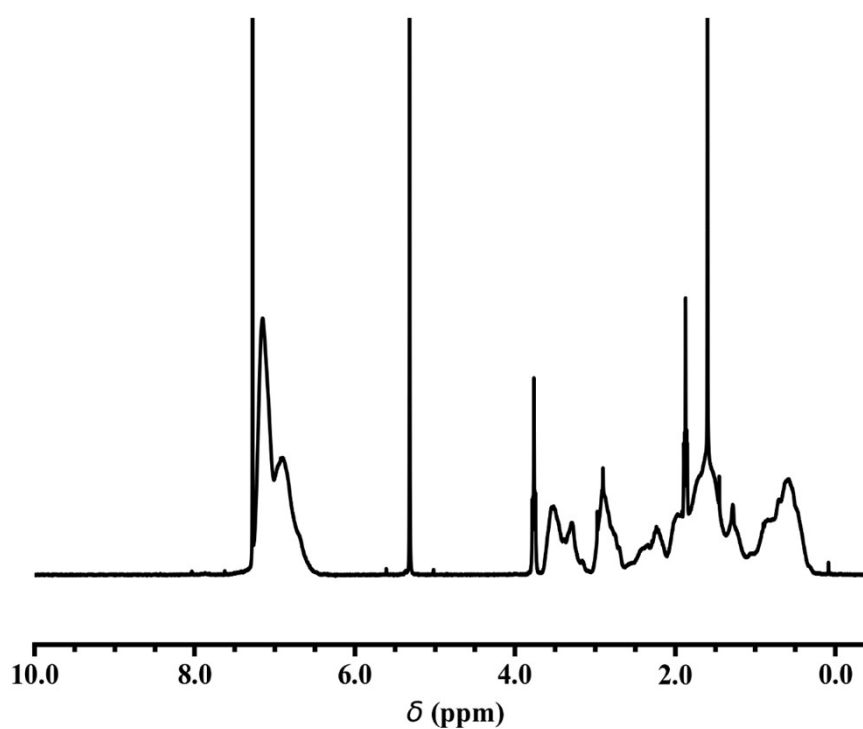


Figure S28. ^1H NMR spectrum of polymer U8 (300 MHz, CDCl_3).

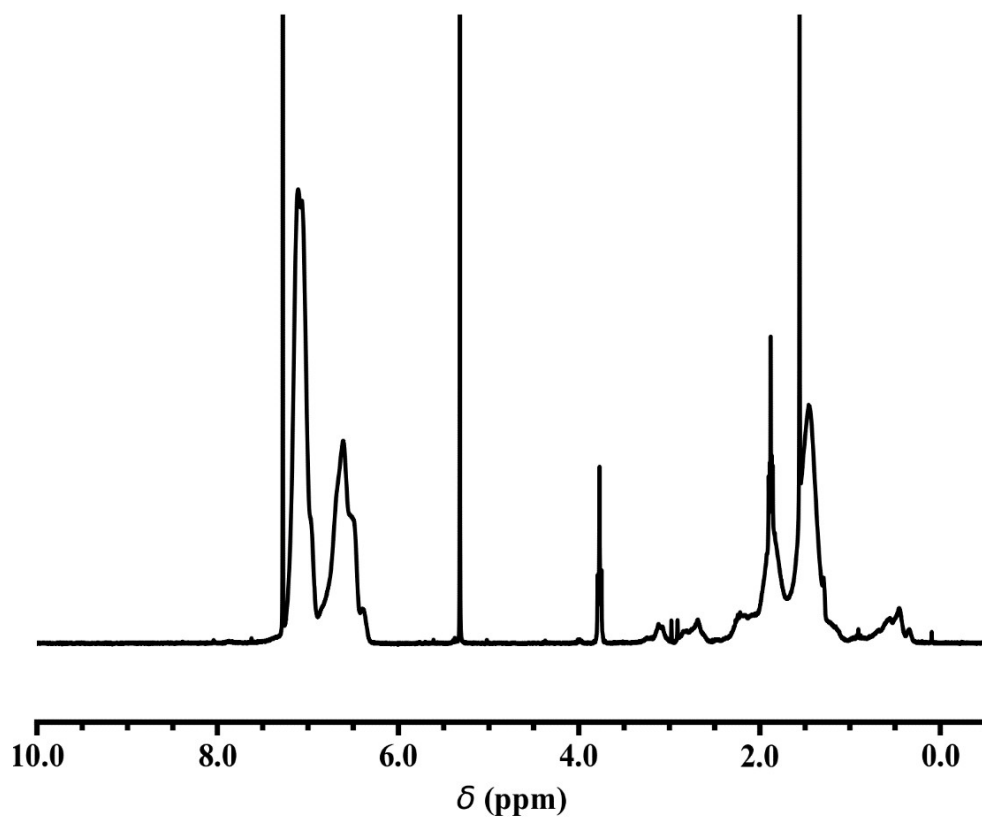


Figure S29. ¹H NMR spectrum of polymer U9 (300 MHz, CDCl₃).

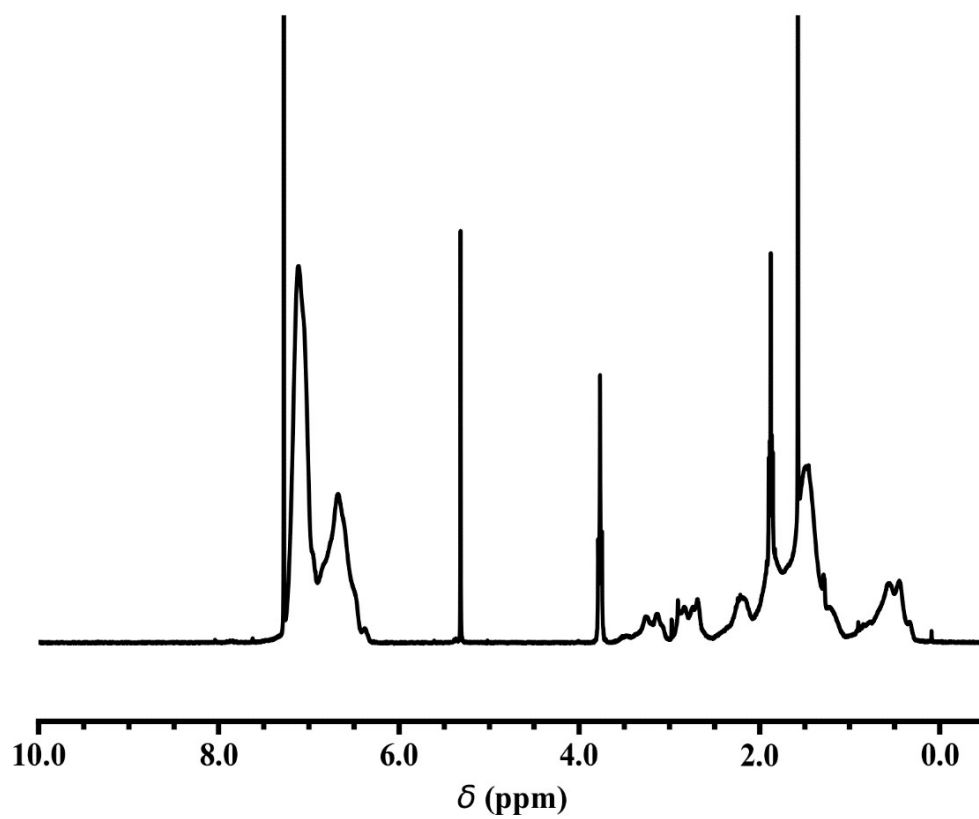


Figure S30. ¹H NMR spectrum of polymer U10 (300 MHz, CDCl₃).

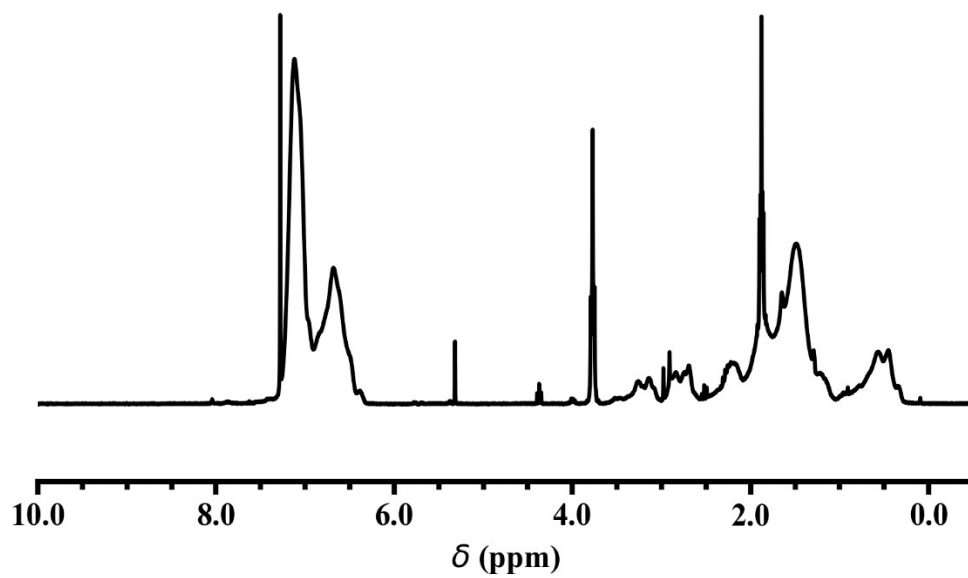


Figure S31. ¹H NMR spectrum of polymer U11 (300 MHz, CDCl₃).

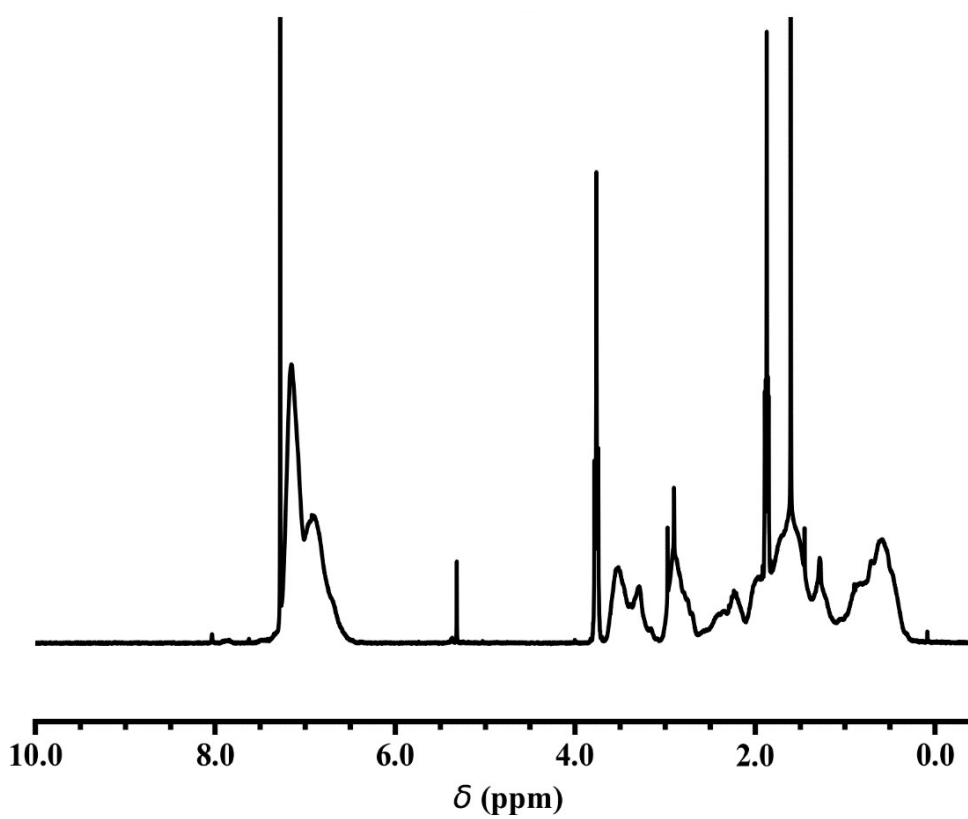


Figure S32. ¹H NMR spectrum of polymer U12 (300 MHz, CDCl₃).

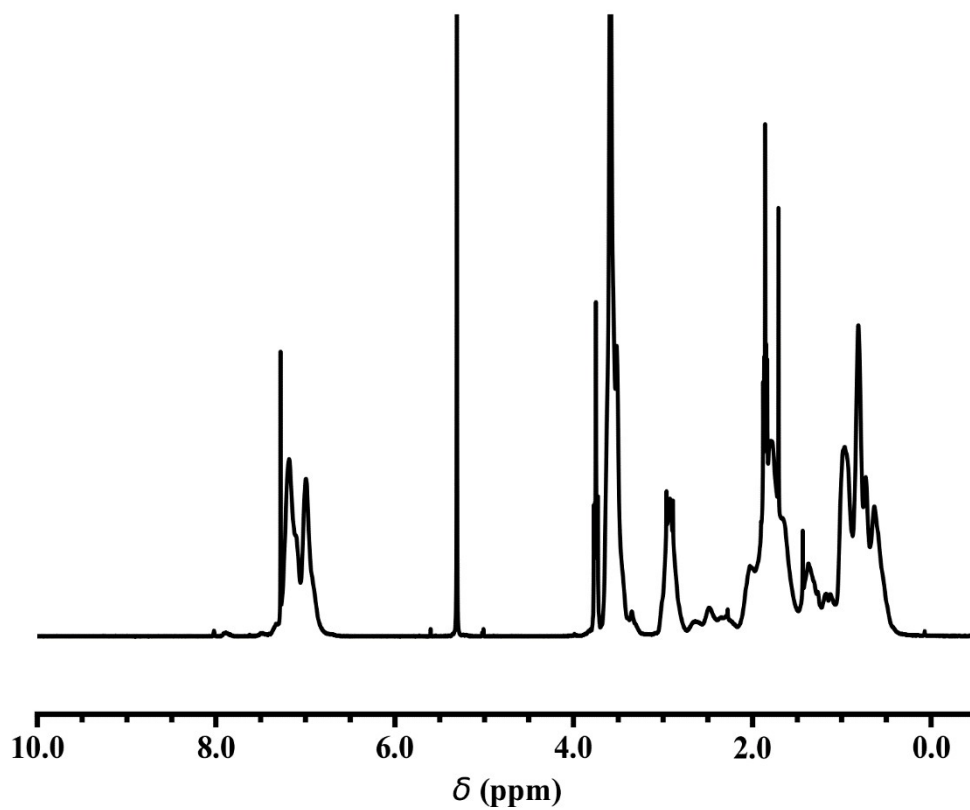


Figure S33. ¹H NMR spectrum of polymer U13 (300 MHz, CDCl₃).

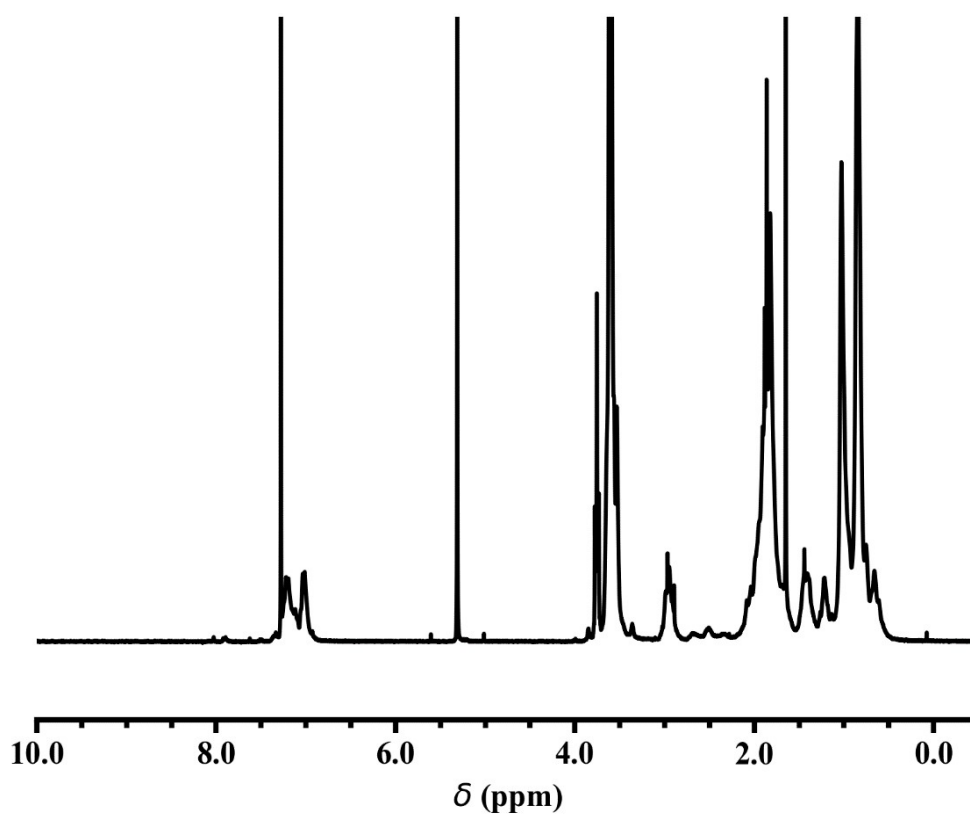


Figure S34. ¹H NMR spectrum of polymer U14 (300 MHz, CDCl₃).

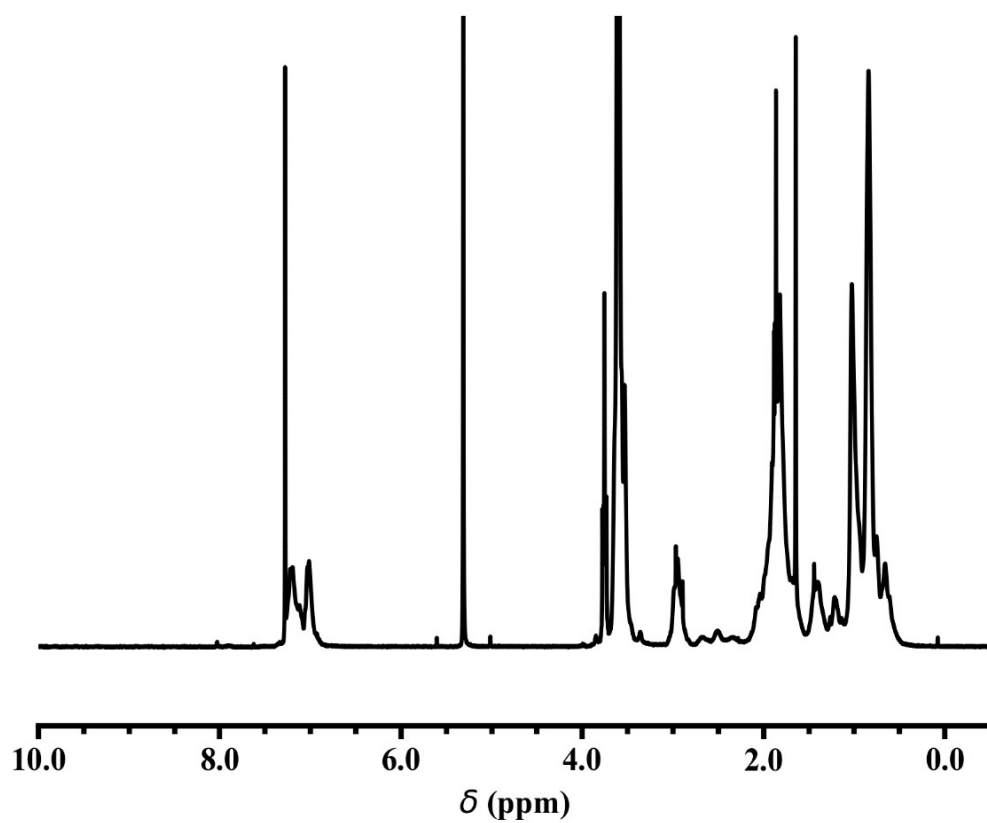


Figure S35. ¹H NMR spectrum of polymer U15 (300 MHz, CDCl₃).

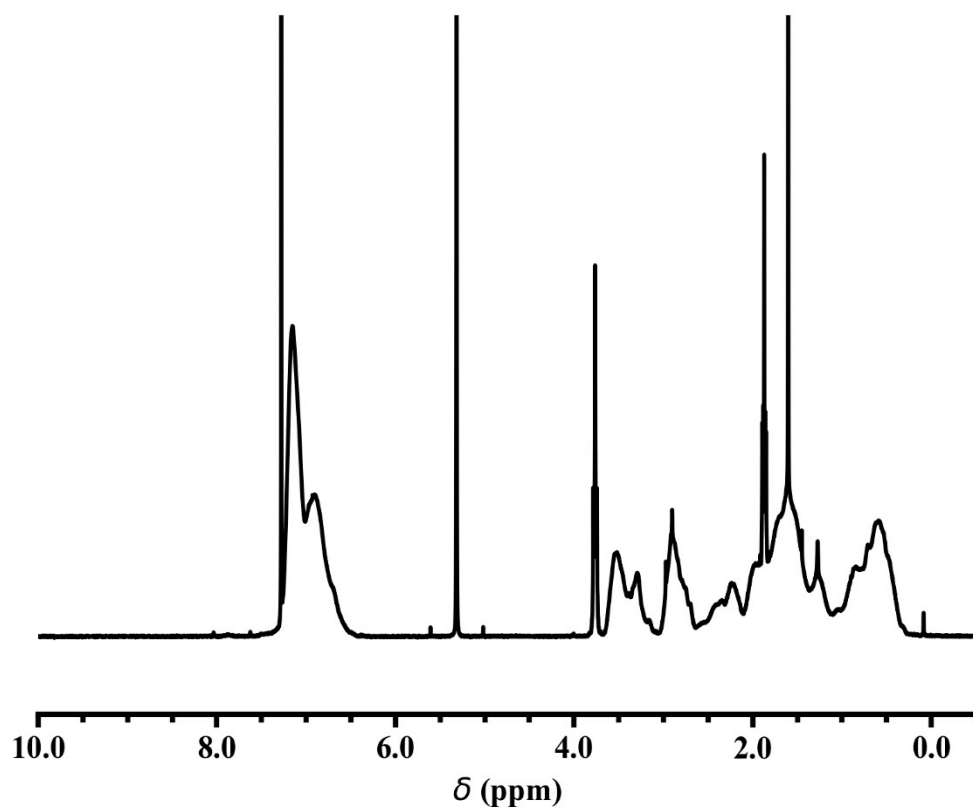


Figure S36. ¹H NMR spectrum of polymer U16 (300 MHz, CDCl₃).

SEC elugrams

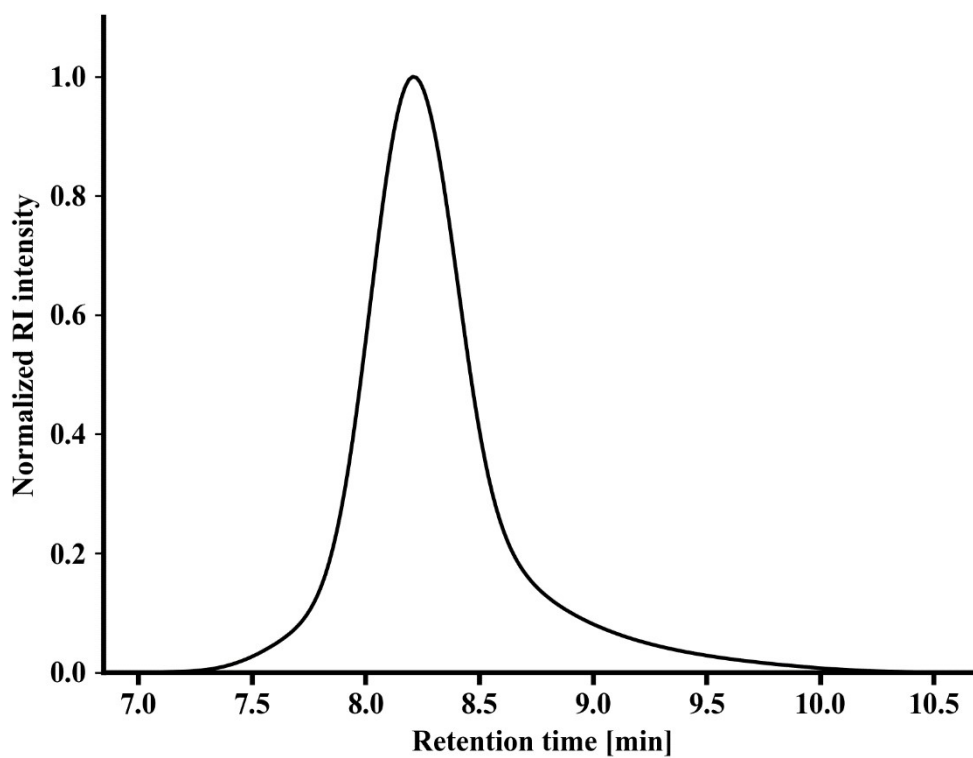


Figure S37. SEC-curve of polymer **P1** (chloroform/isopropanol/triethylamine [94/2/4], PS-standard).

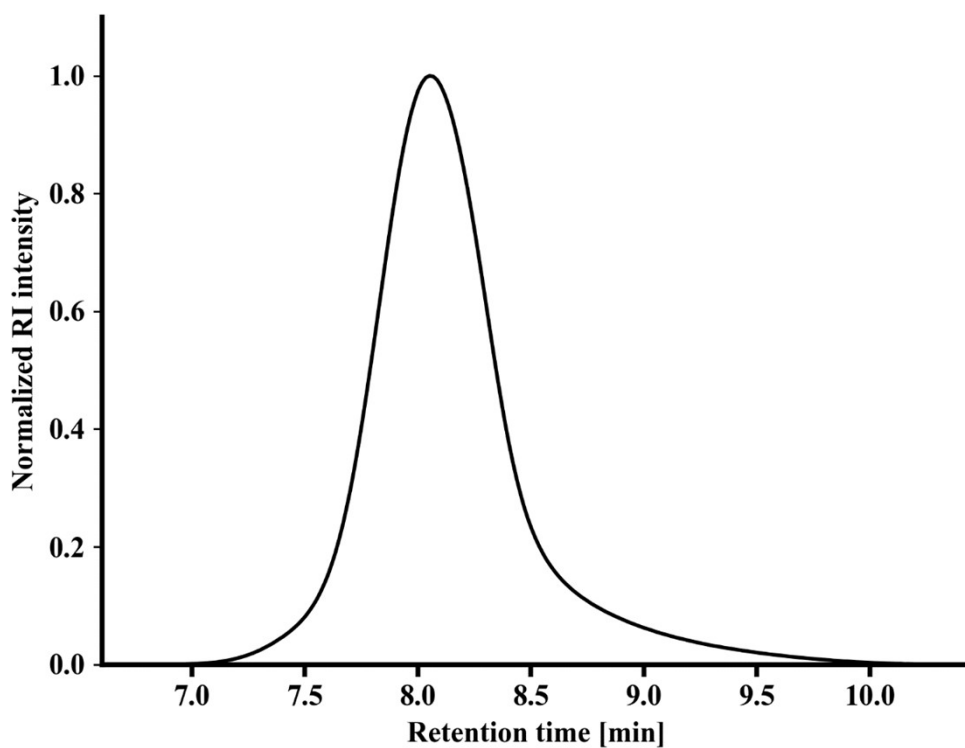


Figure S38. SEC-curve of polymer **P2** (chloroform/isopropanol/triethylamine [94/2/4], PS-standard).

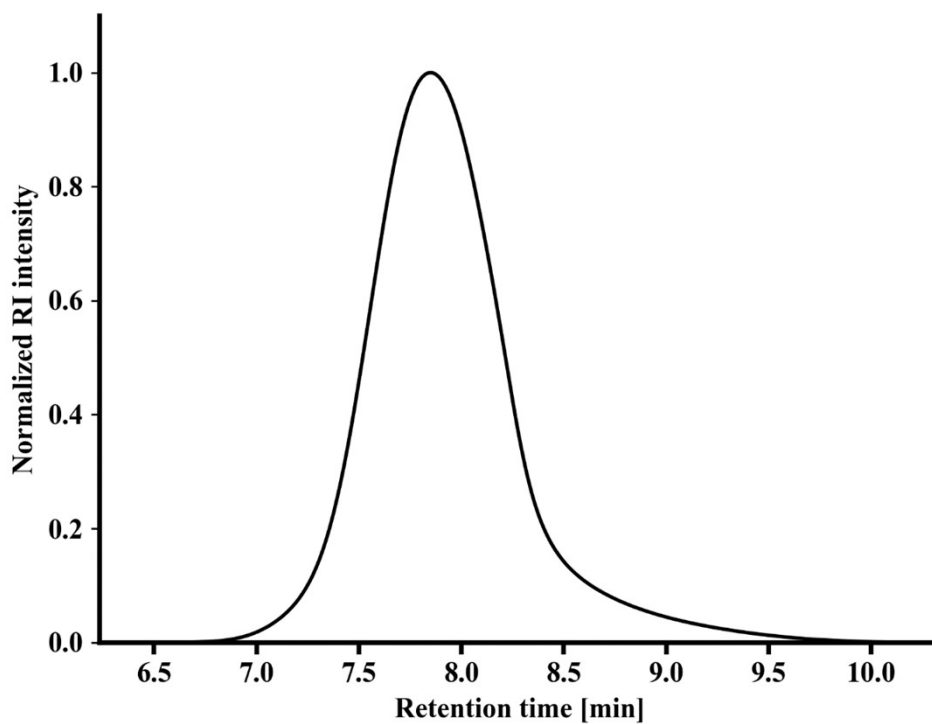


Figure S39. SEC-curve of polymer **P3** (chloroform/isopropanol/triethylamine [94/2/4], PMMA-standard).

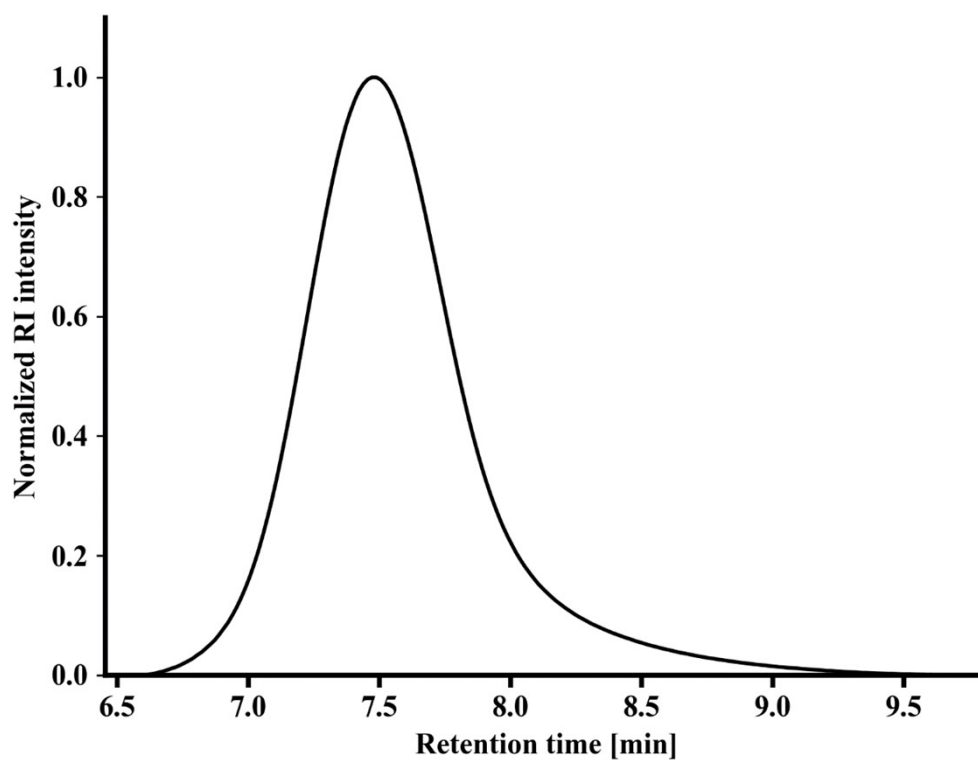


Figure S40. SEC-curve of polymer **P4** (chloroform/isopropanol/triethylamine [94/2/4], PMMA-standard).

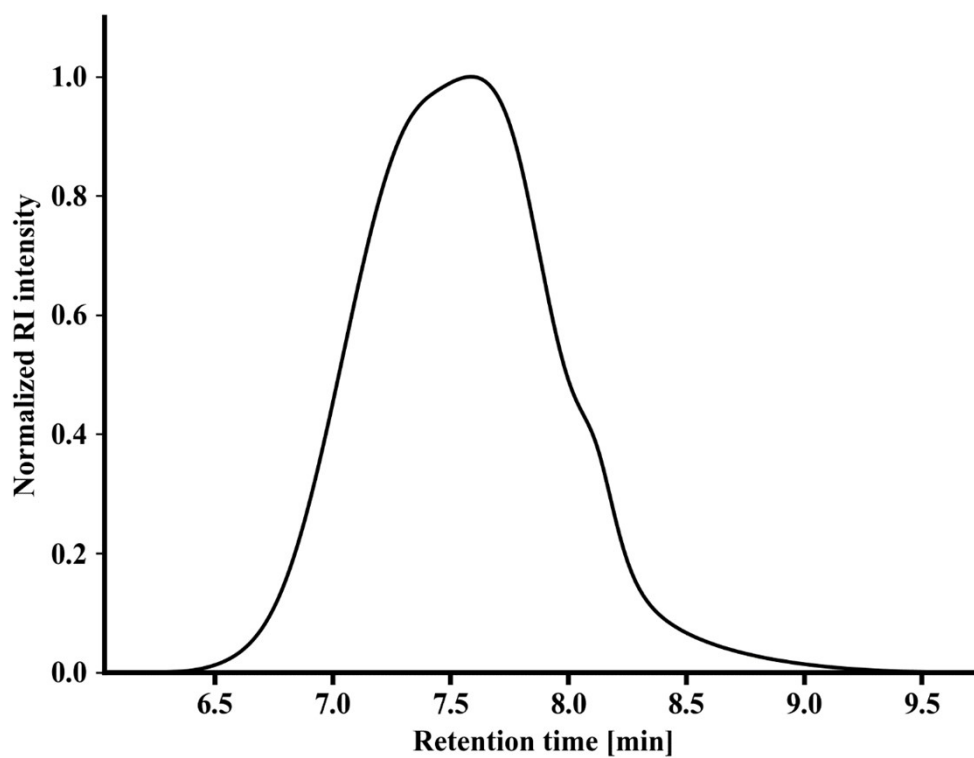


Figure S41. SEC-curve of polymer **P5** (chloroform/isopropanol/triethylamine [94/2/4], PMMA-standard).

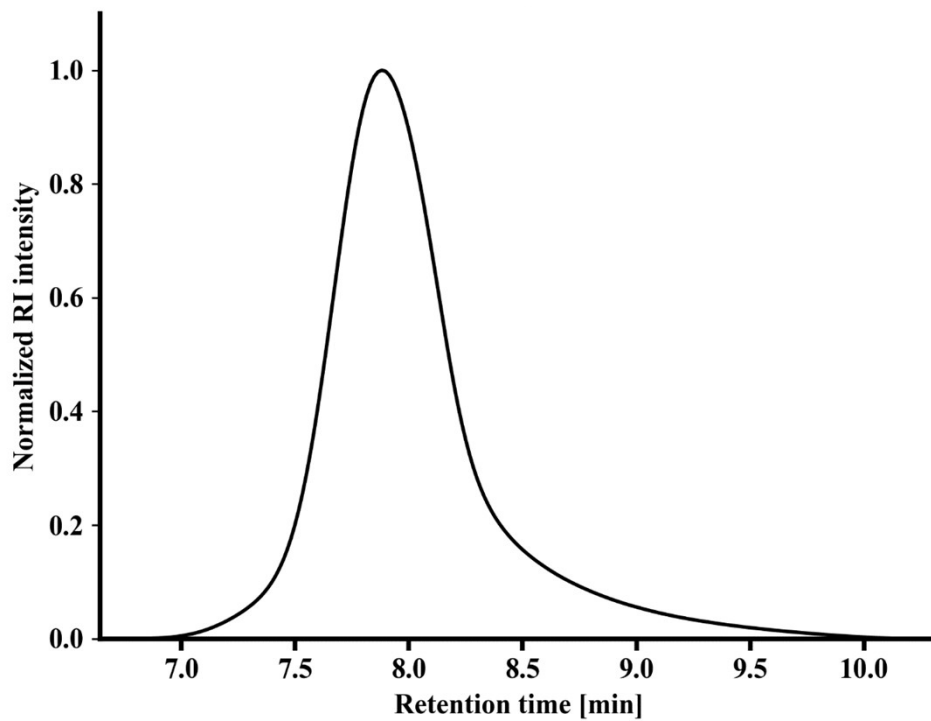


Figure S42. SEC-curve of polymer **P6** (chloroform/isopropanol/triethylamine [94/2/4], PS-standard).

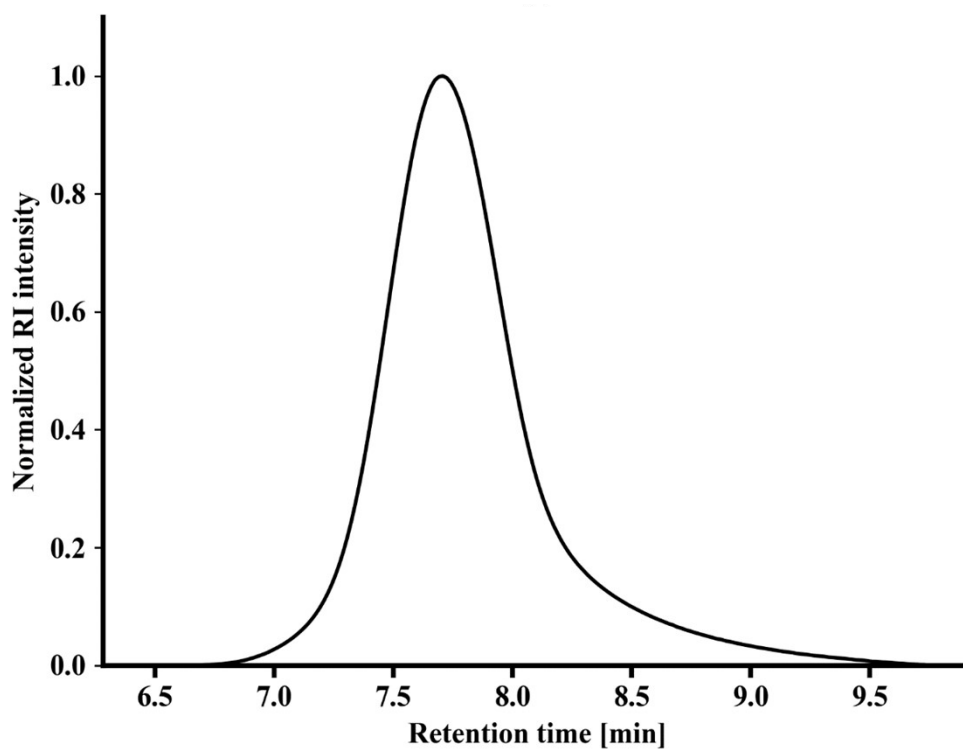


Figure S43. SEC-curve of polymer **P7** (chloroform/isopropanol/triethylamine [94/2/4], PS-standard).

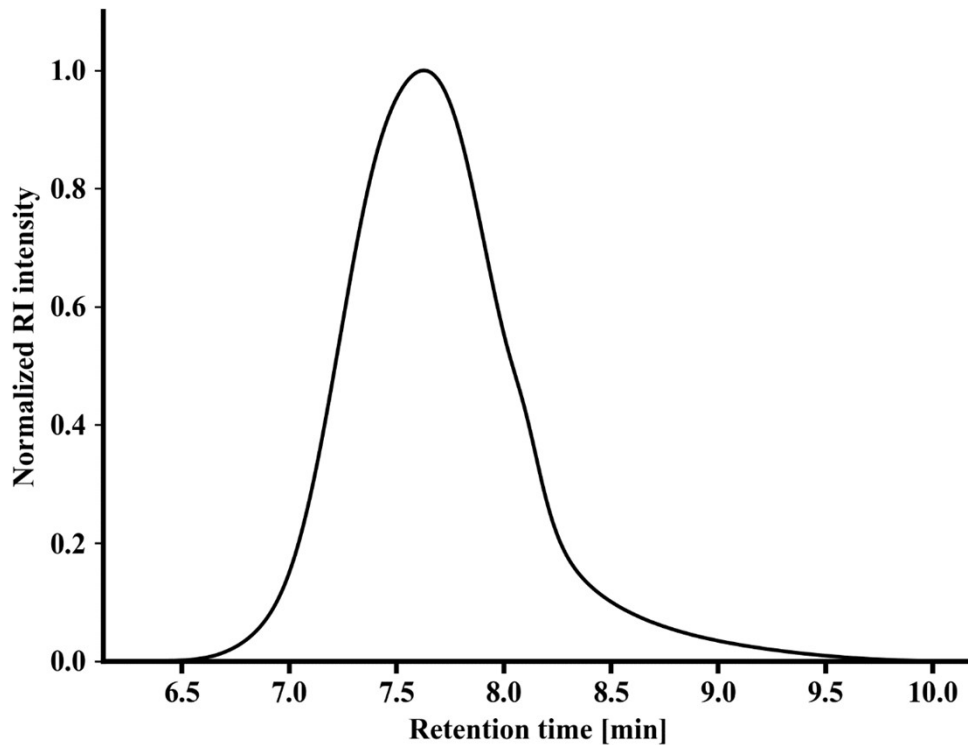


Figure S44. SEC-curve of polymer **P8** (chloroform/isopropanol/triethylamine [94/2/4], PMMA-standard).

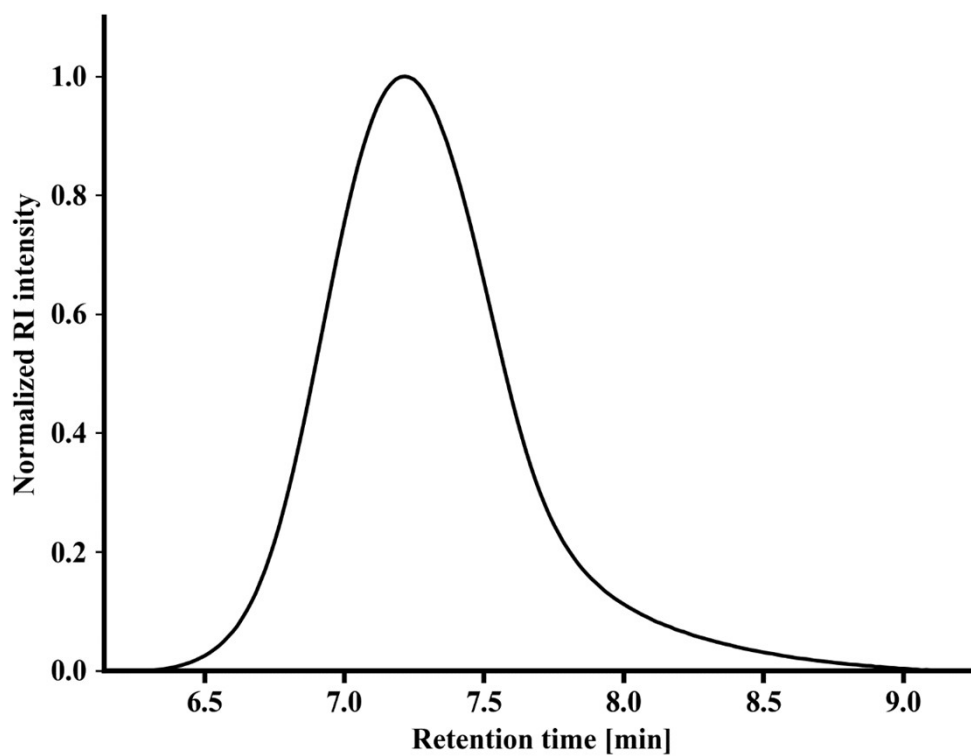


Figure S45. SEC-curve of polymer **P9** (chloroform/isopropanol/triethylamine [94/2/4], PMMA-standard).

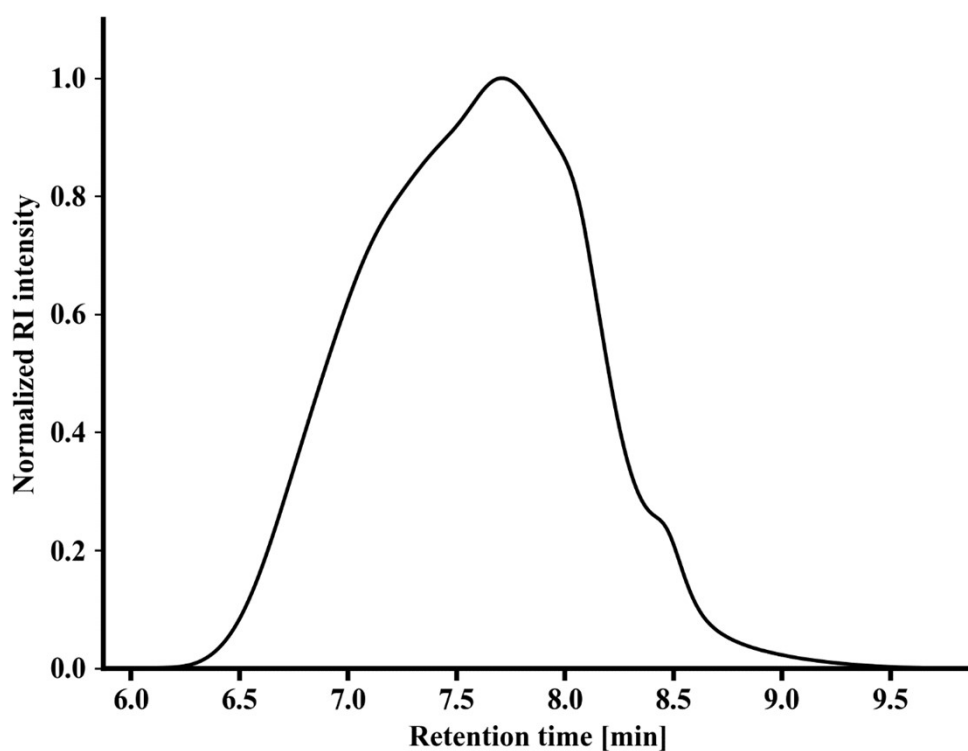


Figure S46. SEC-curve of polymer **P10** (chloroform/isopropanol/triethylamine [94/2/4], PMMA-standard).

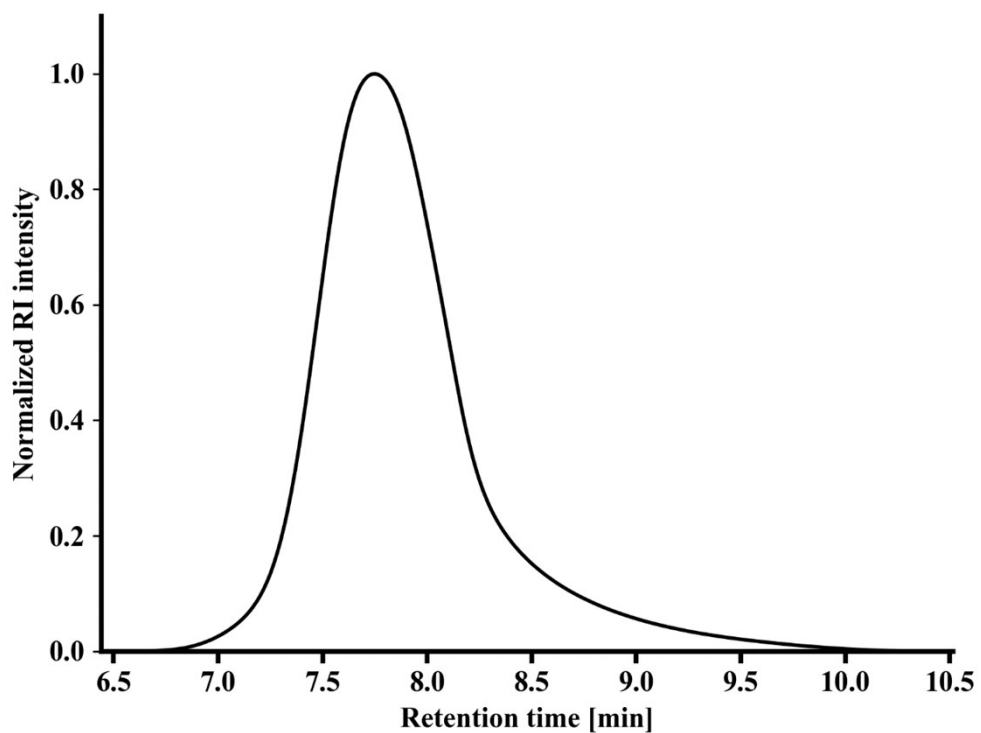


Figure S47. SEC-curve of polymer **P11** (chloroform/isopropanol/triethylamine [94/2/4], PS-standard).

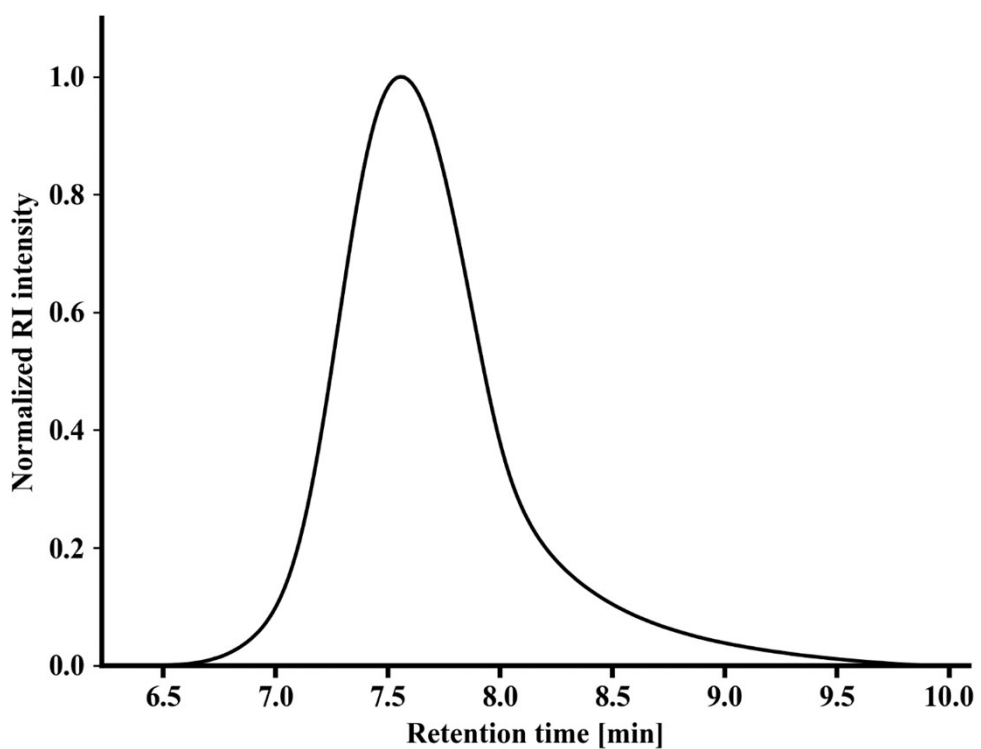


Figure S48. SEC-curve of polymer **P12** (chloroform/isopropanol/triethylamine [94/2/4], PS-standard).

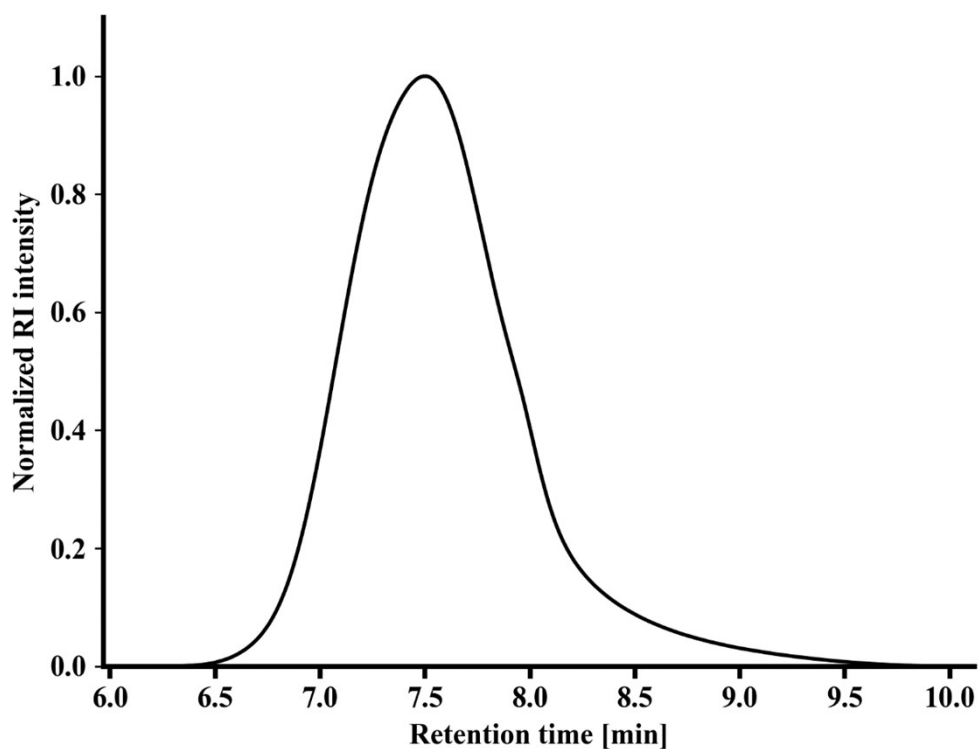


Figure S49. SEC-curve of polymer **P13** (chloroform/isopropanol/triethylamine [94/2/4], PMMA-standard).

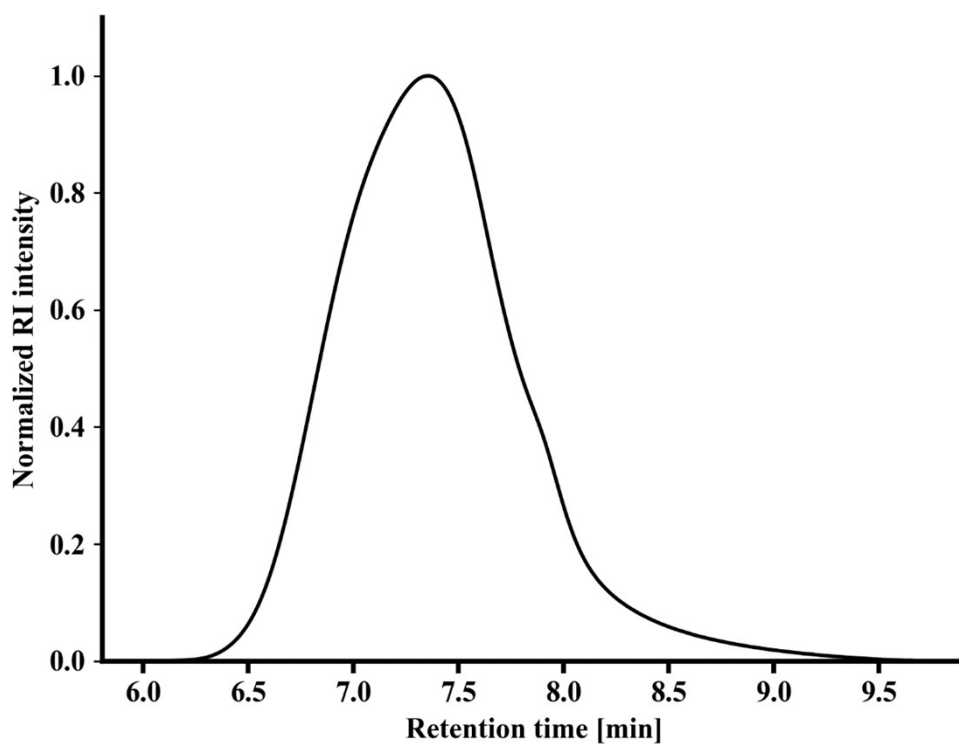


Figure S50. SEC-curve of polymer **P14** (chloroform/isopropanol/triethylamine [94/2/4], PMMA-standard).

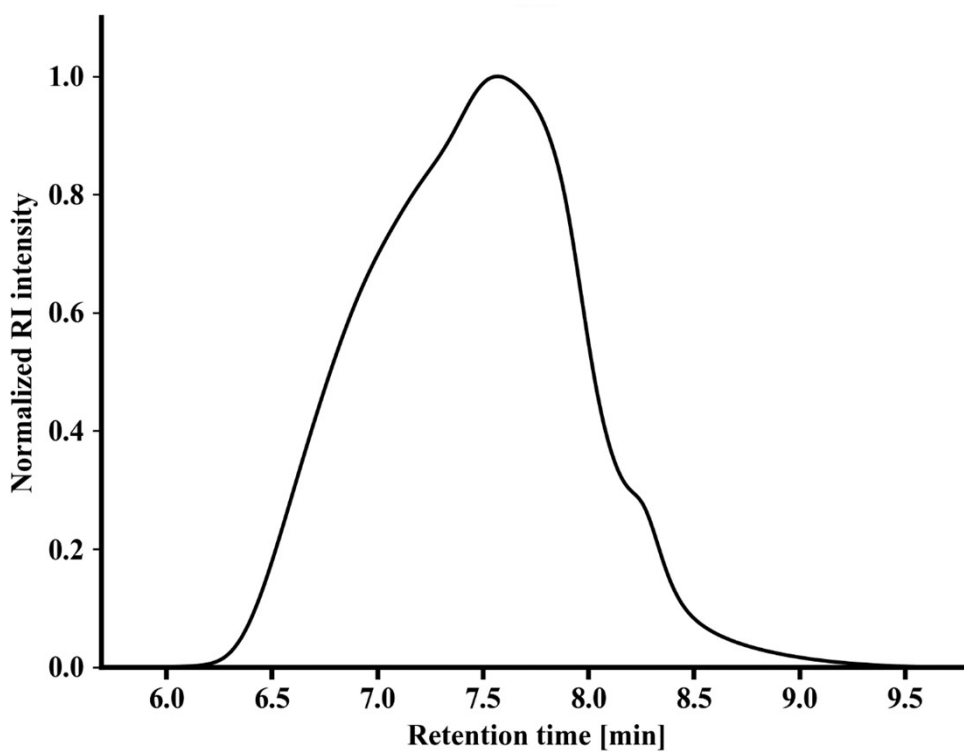


Figure S51. SEC-curve of polymer **P15** (chloroform/isopropanol/triethylamine [94/2/4], PMMA-standard).

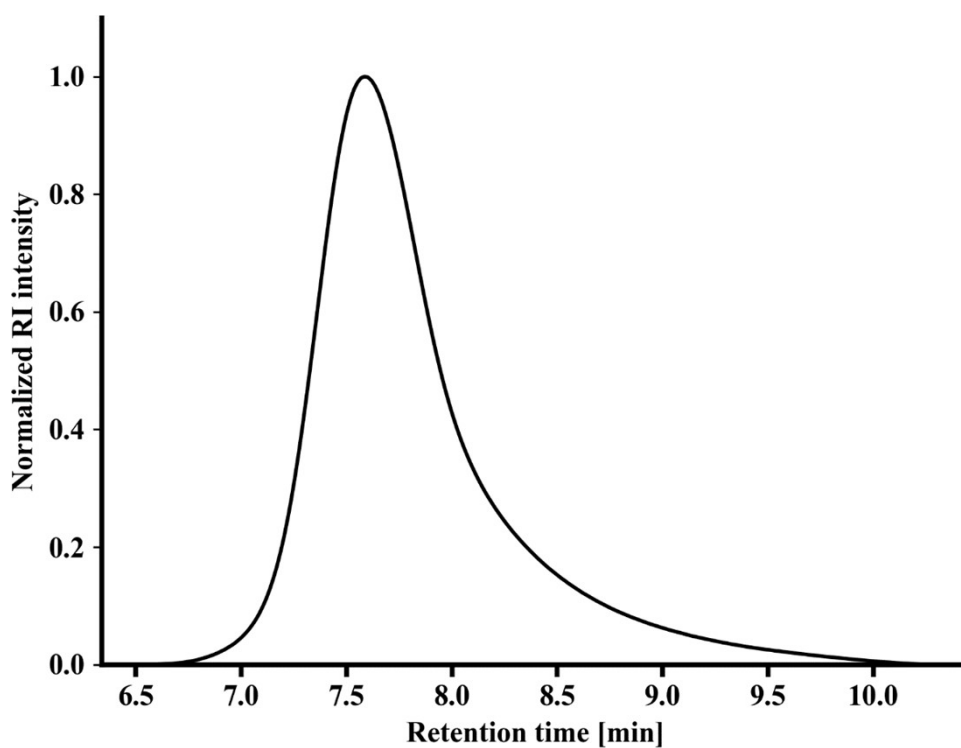


Figure S52. SEC-curve of polymer **P16** (chloroform/isopropanol/triethylamine [94/2/4], PS-standard).

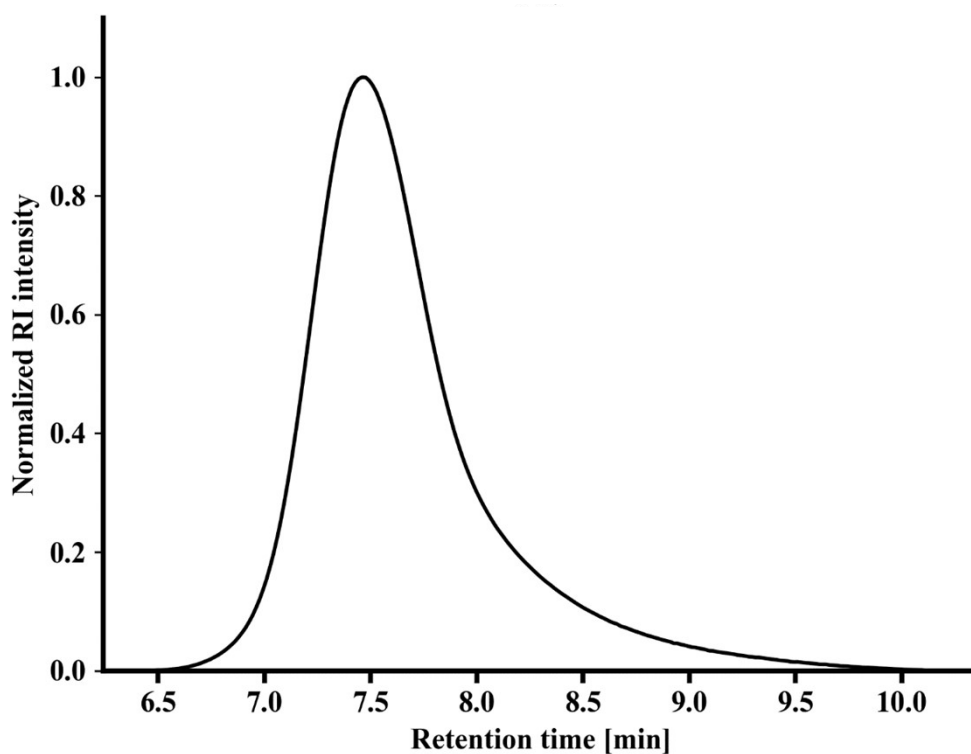


Figure S53. SEC-curve of polymer **P17** (chloroform/isopropanol/triethylamine [94/2/4], PS-standard).

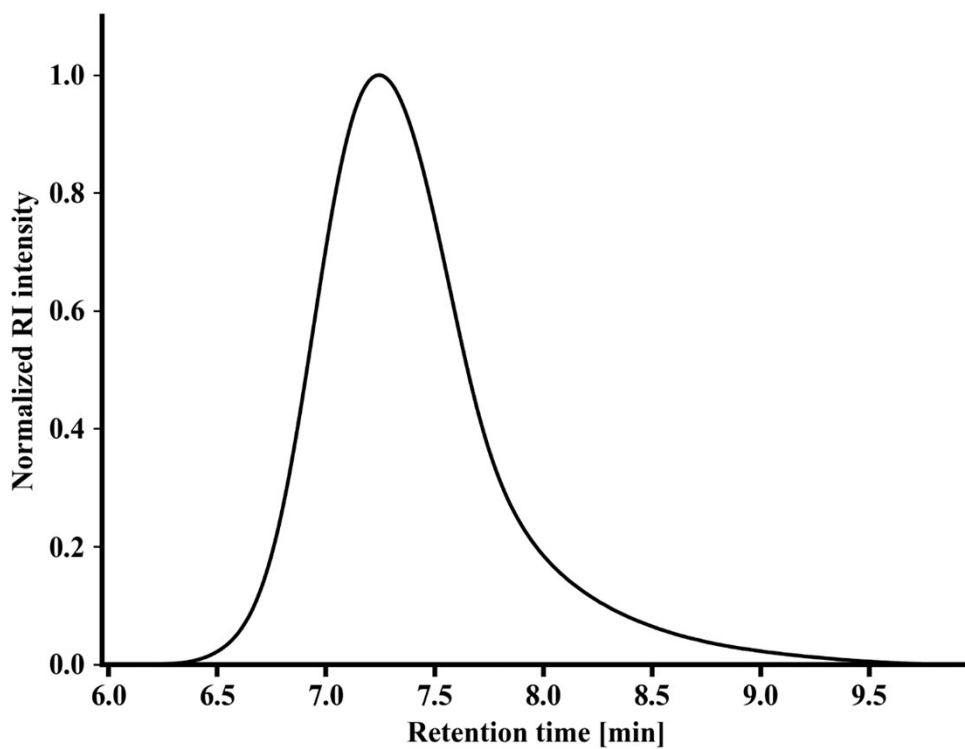


Figure S54. SEC-curve of polymer **P18** (chloroform/isopropanol/triethylamine [94/2/4], PMMA-standard).

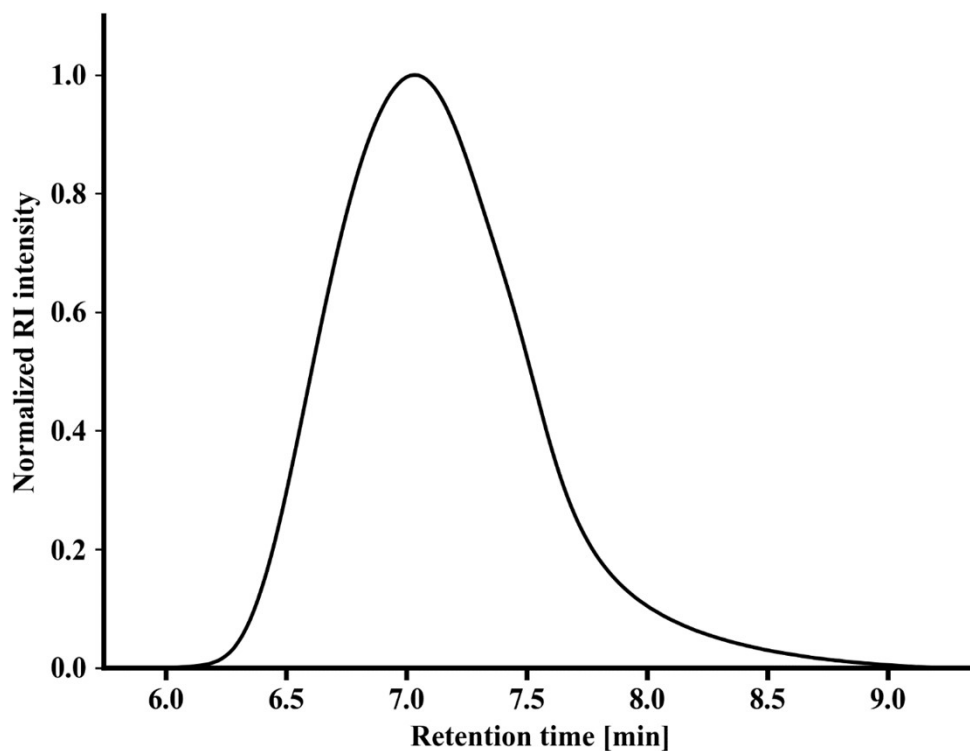


Figure S55. SEC-curve of polymer **P19** (chloroform/isopropanol/triethylamine [94/2/4], PMMA-standard).

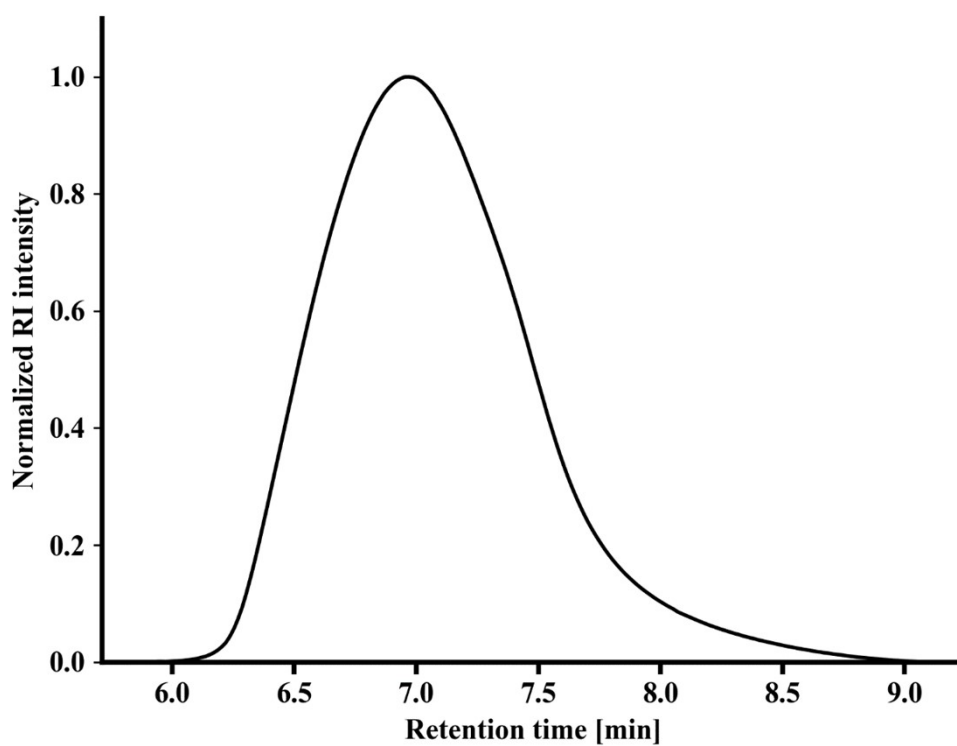


Figure S56. SEC-curve of polymer **P20** (chloroform/isopropanol/triethylamine [94/2/4], PMMA-standard).

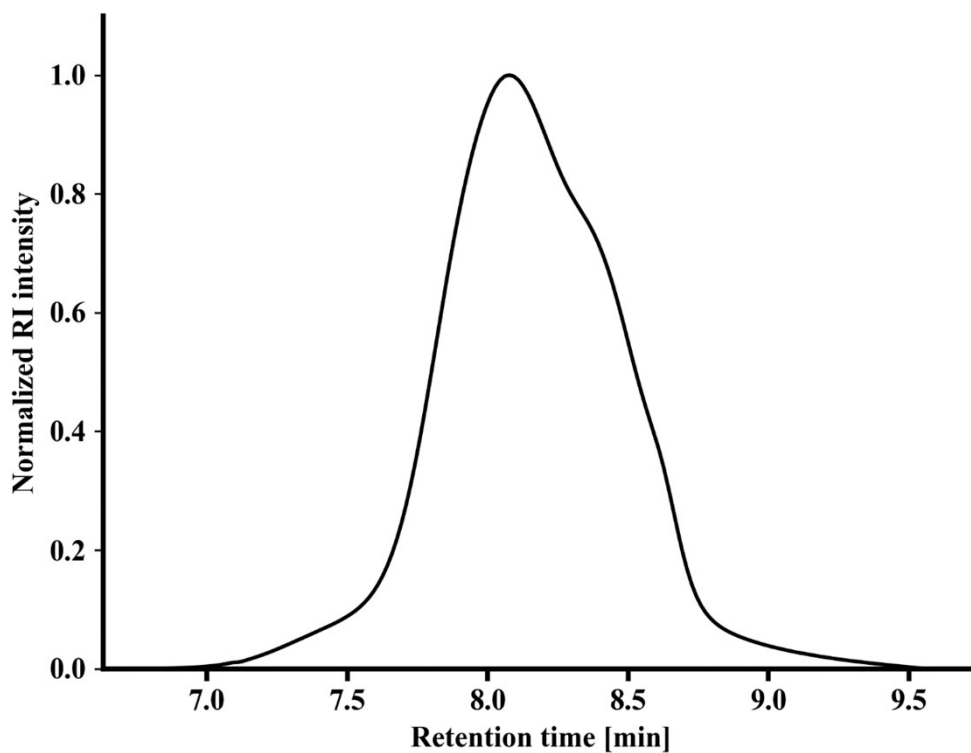


Figure S57. SEC-curve of polymer U1 (chloroform/isopropanol/triethylamine [94/2/4], PS-standard).

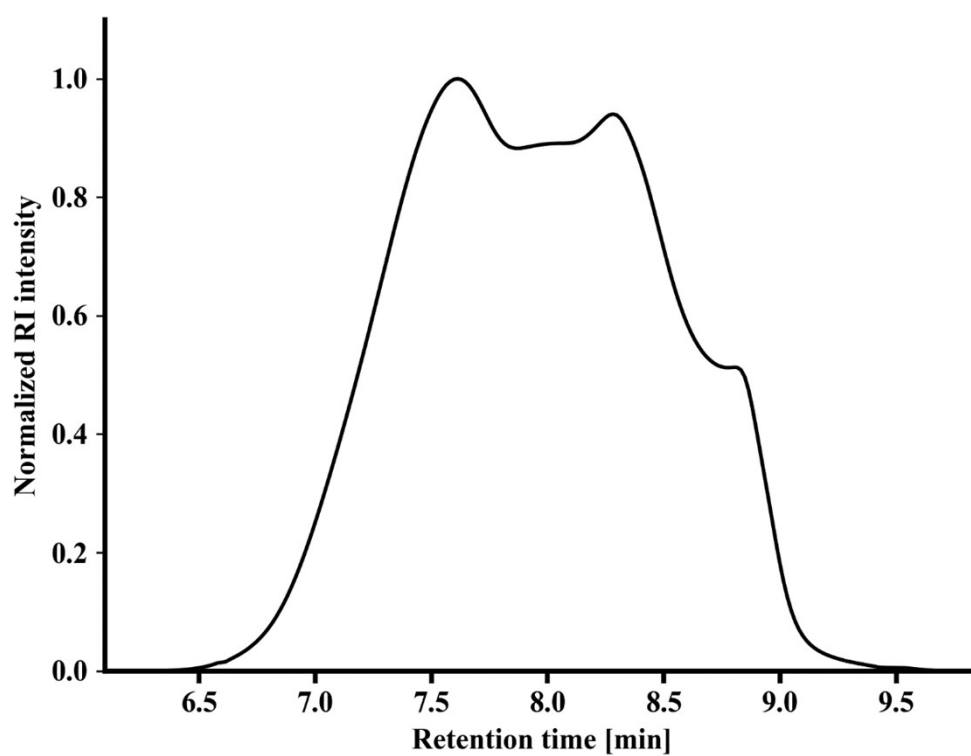


Figure S58. SEC-curve of polymer U2 (chloroform/isopropanol/triethylamine [94/2/4], PMMA-standard).

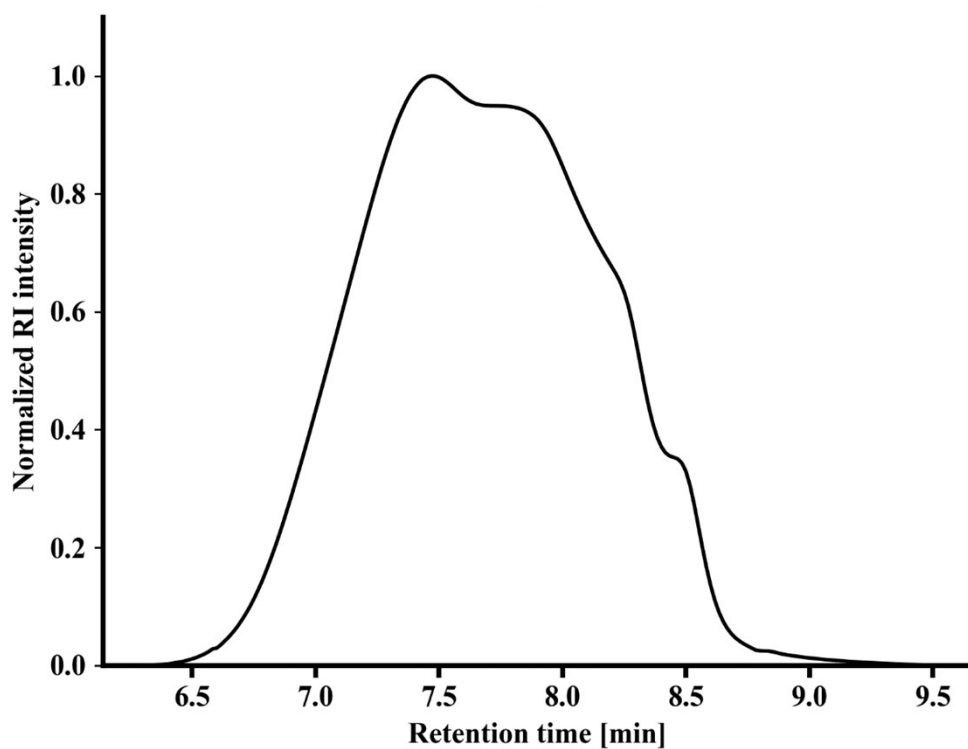


Figure S59. SEC-curve of polymer U3 (chloroform/isopropanol/triethylamine [94/2/4], PMMA-standard).

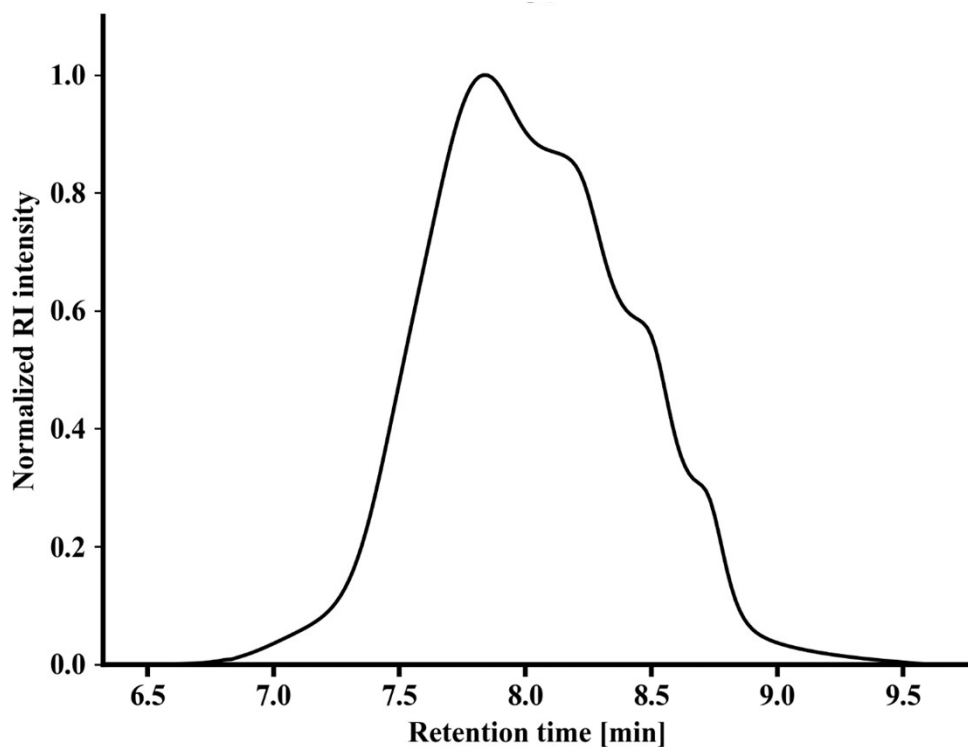


Figure S60 SEC-curve of polymer U4 (chloroform/isopropanol/triethylamine [94/2/4], PS-standard).

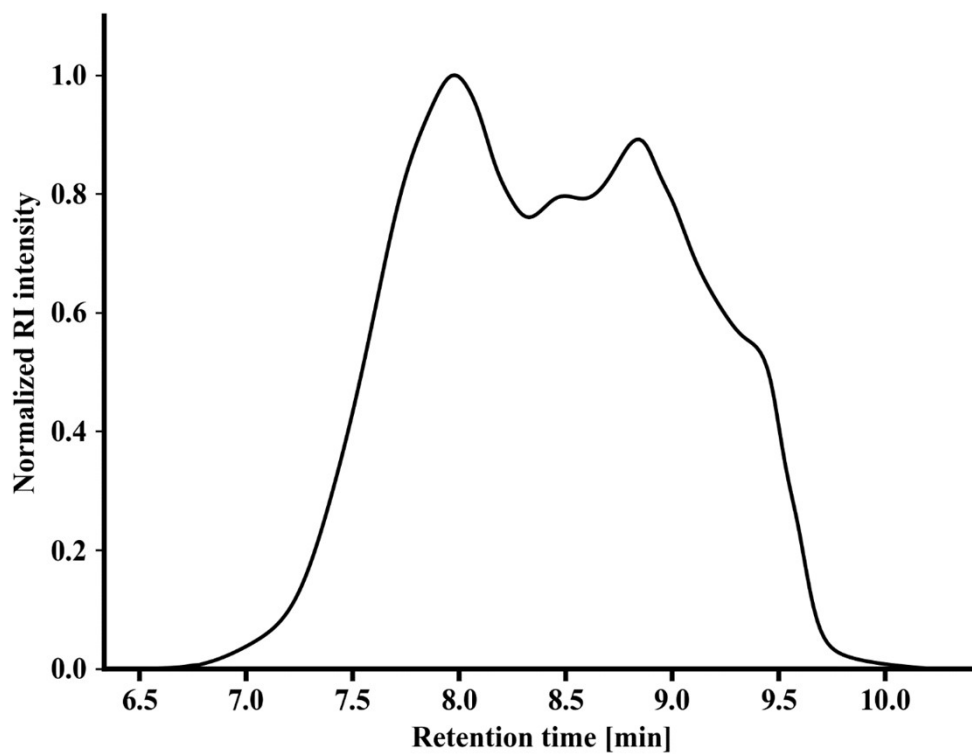


Figure S61. SEC-curve of polymer U5 (chloroform/isopropanol/triethylamine [94/2/4], PS-standard).

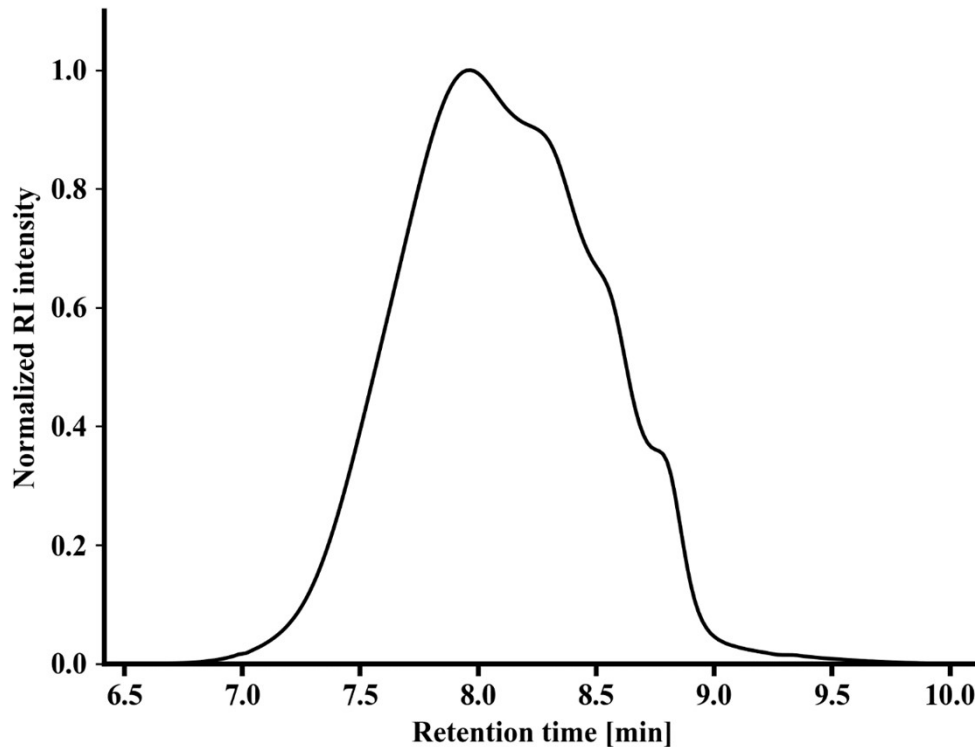


Figure S62. SEC-curve of polymer U6 (chloroform/isopropanol/triethylamine [94/2/4], PMMA-standard).

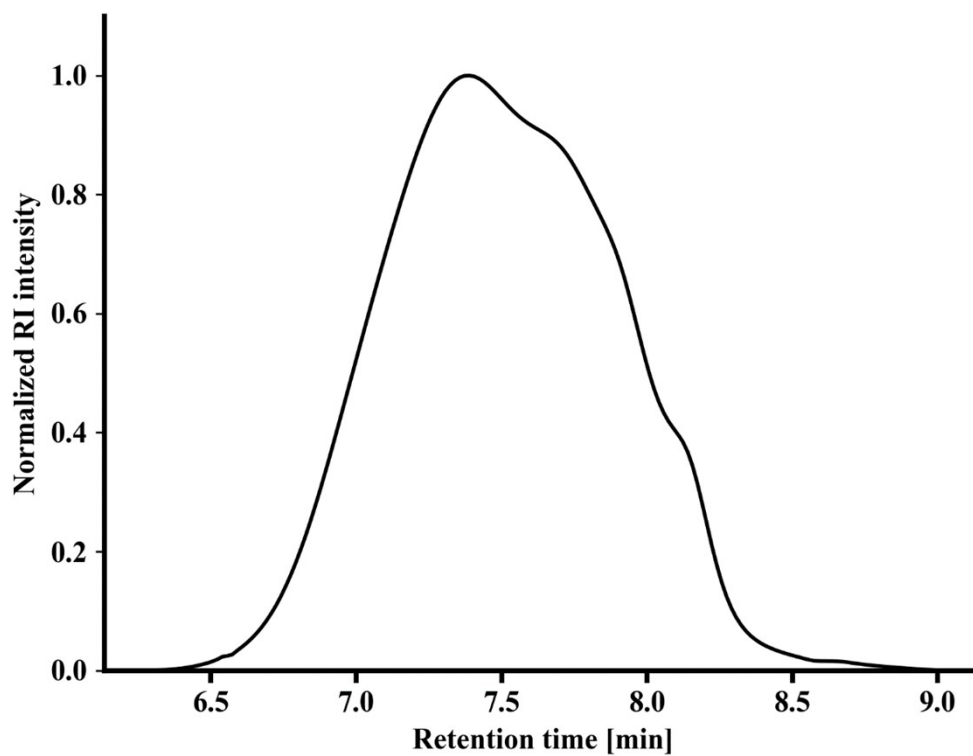


Figure S63. SEC-curve of polymer U7 (chloroform/isopropanol/triethylamine [94/2/4], PMMA-standard).

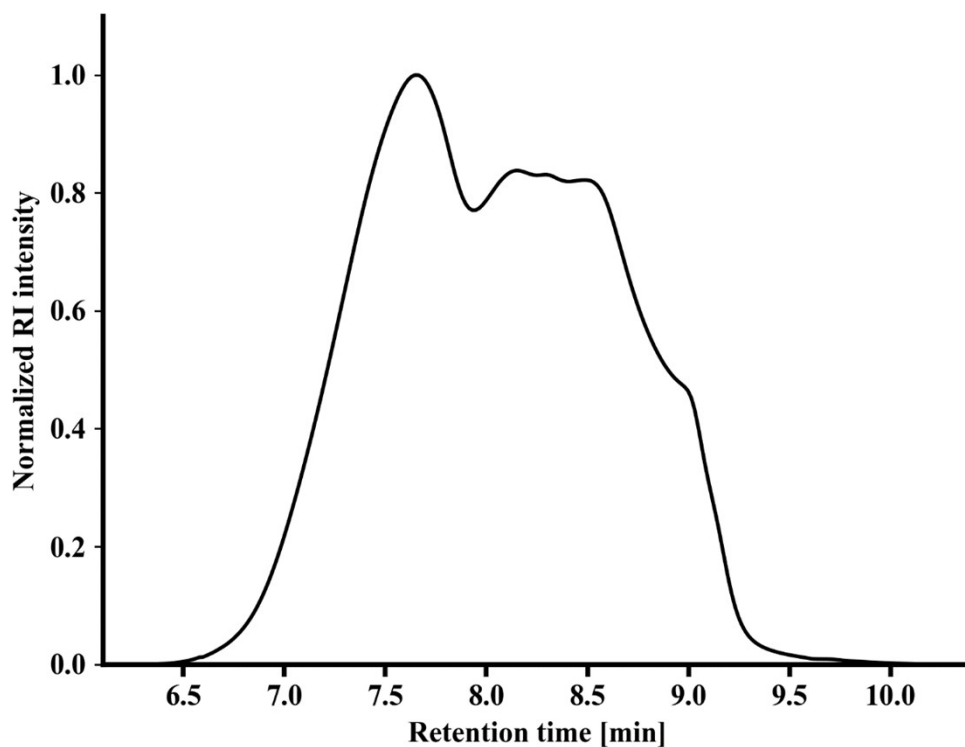


Figure S64. SEC-curve of polymer U8 (chloroform/isopropanol/triethylamine [94/2/4], PMMA-standard).

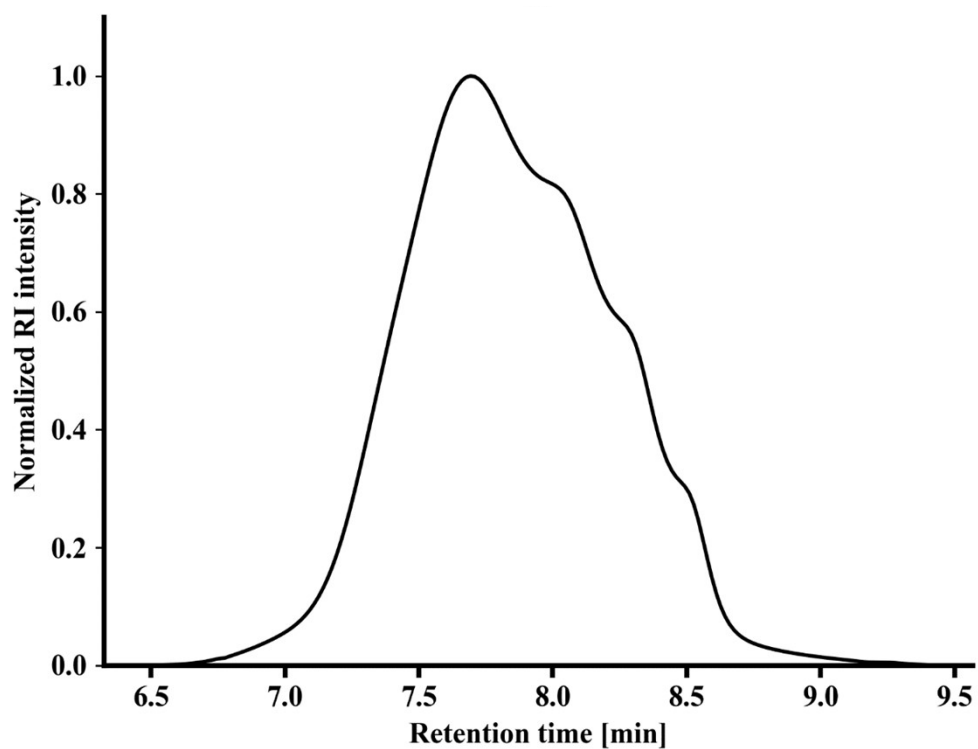


Figure S65. SEC-curve of polymer U9 (chloroform/isopropanol/triethylamine [94/2/4], PS-standard).

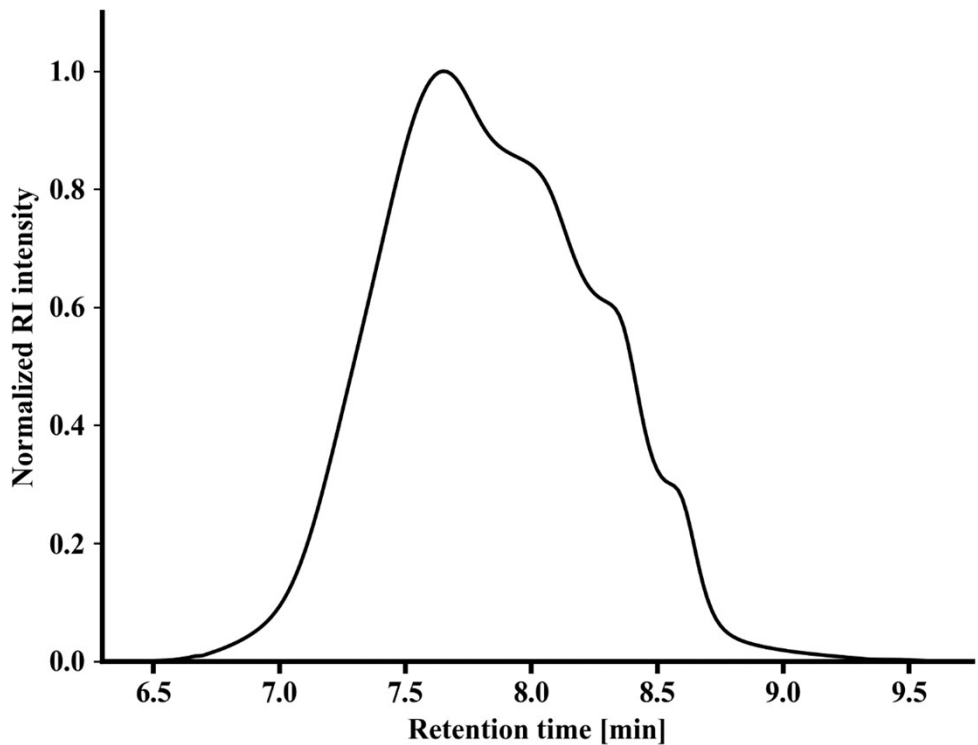


Figure S66. SEC-curve of polymer U10 (chloroform/isopropanol/triethylamine [94/2/4], PS-standard).

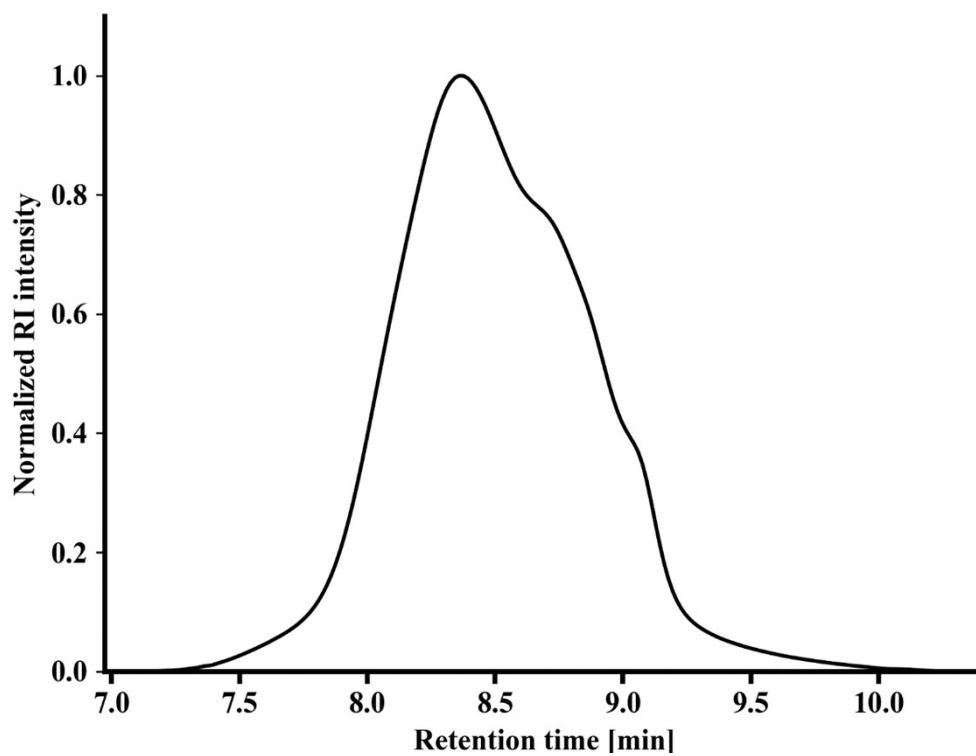


Figure S67. SEC-curve of polymer U11 (chloroform/isopropanol/triethylamine [94/2/4], PS-standard).

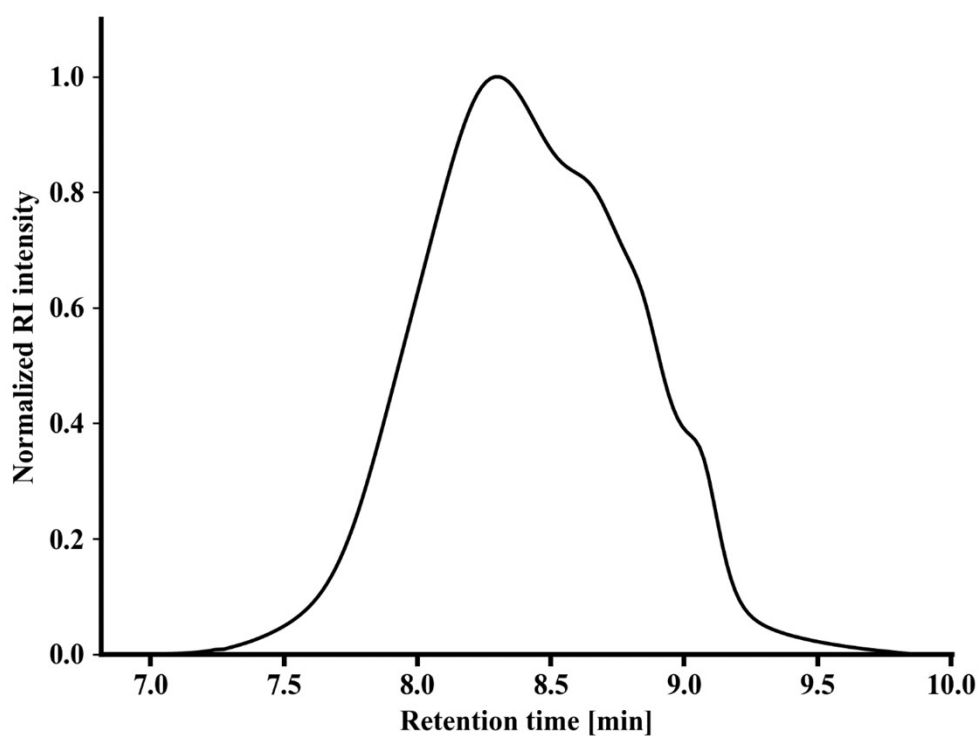


Figure S68. SEC-curve of polymer U12 (chloroform/isopropanol/triethylamine [94/2/4], PMMA-standard).

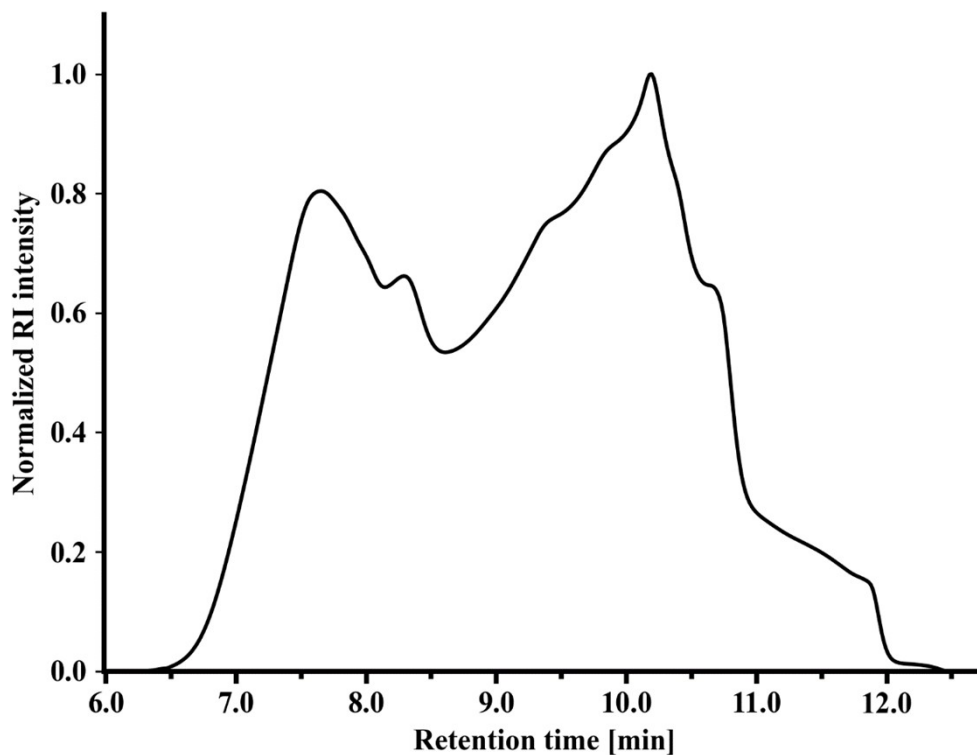


Figure S69. SEC-curve of polymer U13 (chloroform/isopropanol/triethylamine [94/2/4], PMMA-standard).

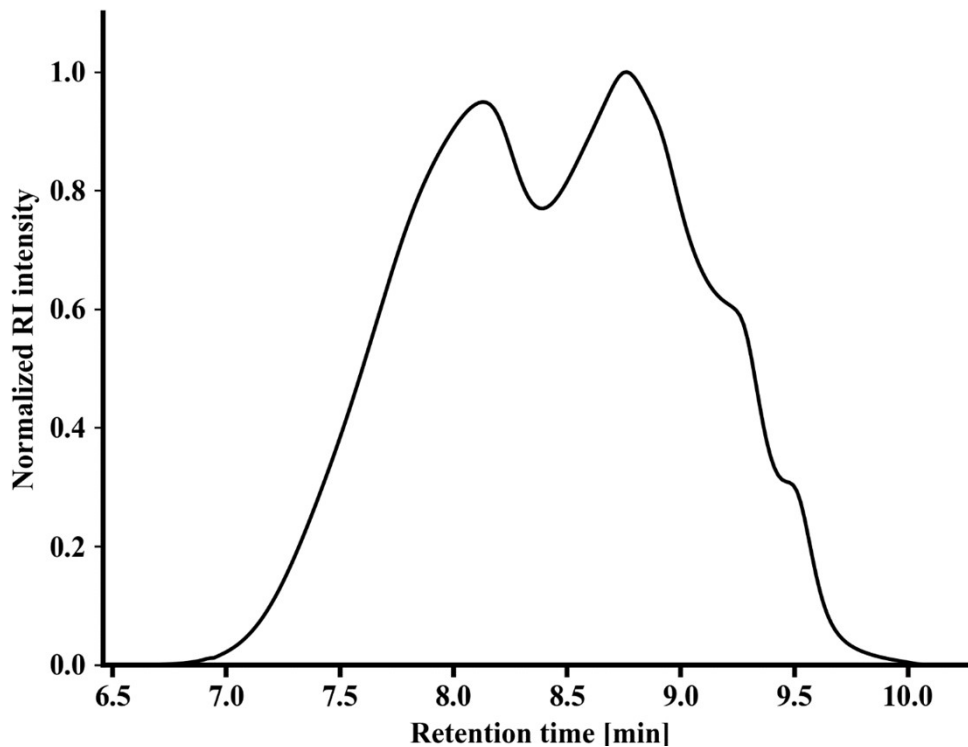


Figure S70. SEC-curve of polymer U14 (chloroform/isopropanol/triethylamine [94/2/4], PMMA-standard).

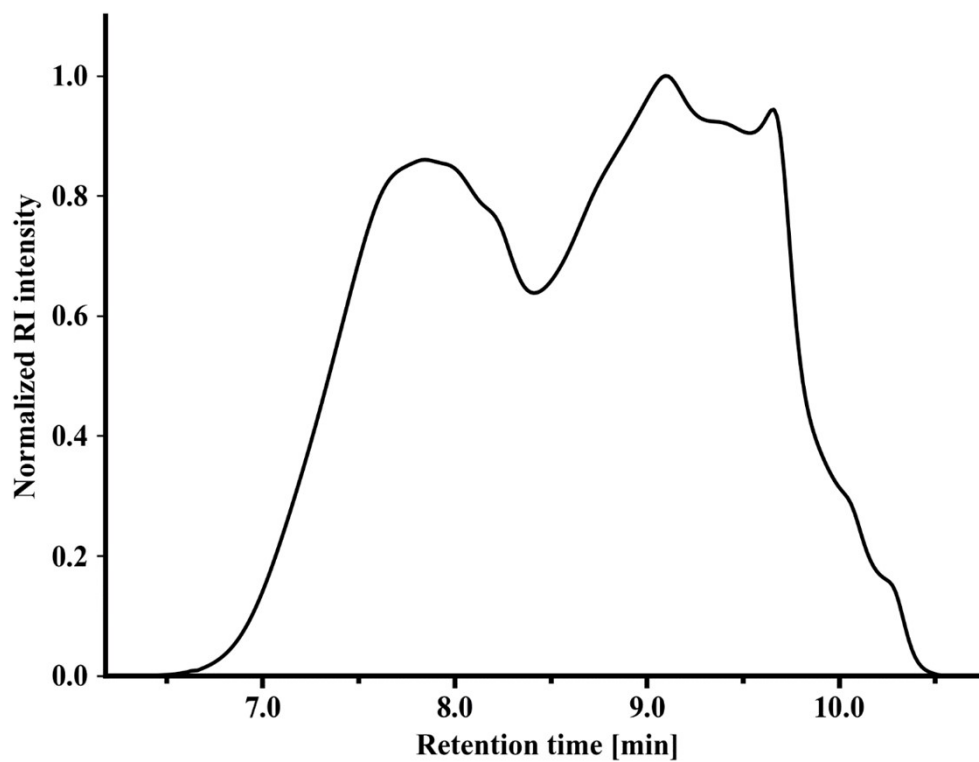


Figure S71. SEC-curve of polymer U15 (chloroform/isopropanol/triethylamine [94/2/4], PMMA-standard).

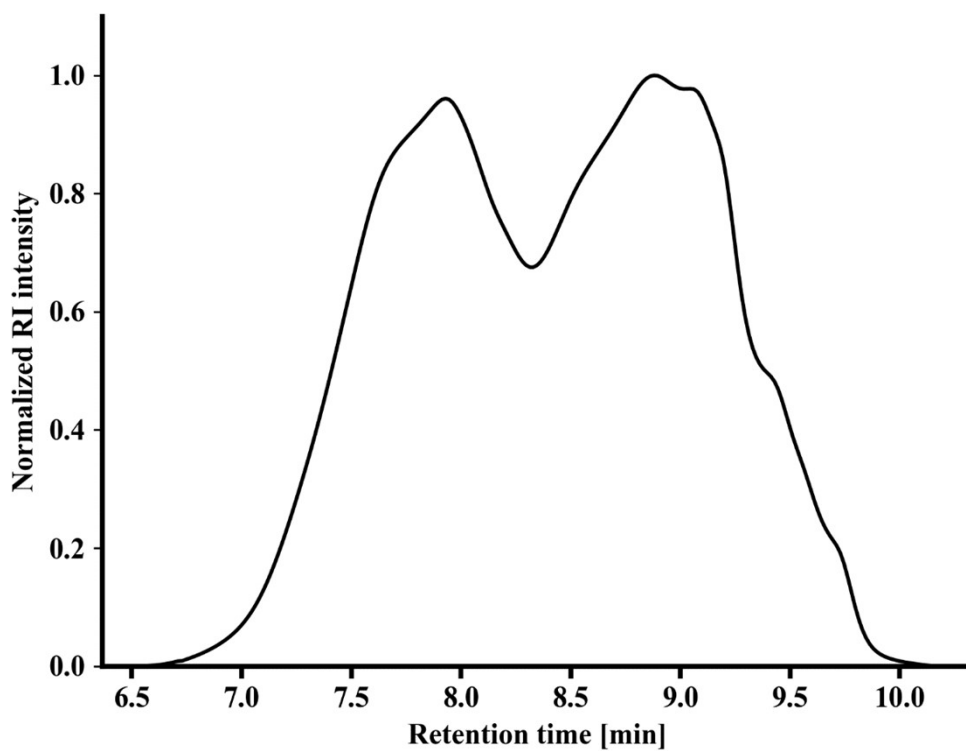


Figure S72. SEC-curve of polymer U16 (chloroform/isopropanol/triethylamine [94/2/4], PMMA-standard)