

Figure S1 The differential scanning calorimetry (DSC) of LNT

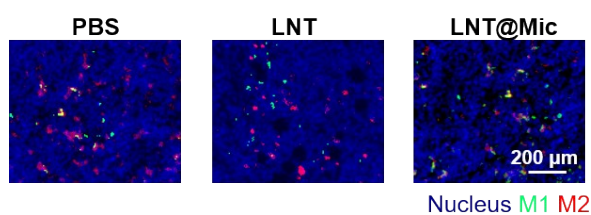


Figure S2 The immunofluorescence results of M1-M2 for different treatment.

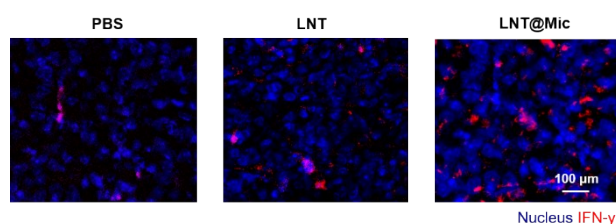


Fig. S3 Immunofluorescence detection of IFN-γ for different treatment.

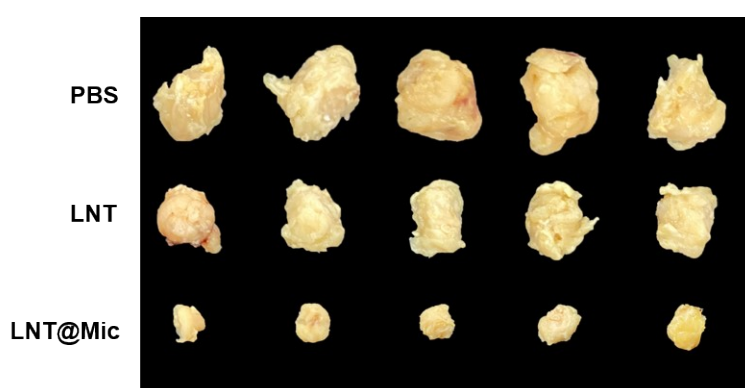


Figure S4 The pictures of isolated MC38 tumors.

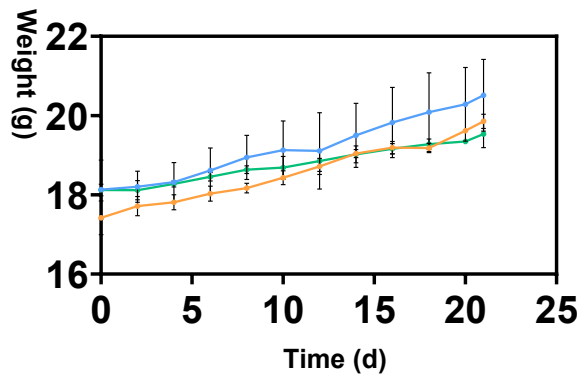


Figure S5 Body weight of MC38 MODEL mice during the treatment.

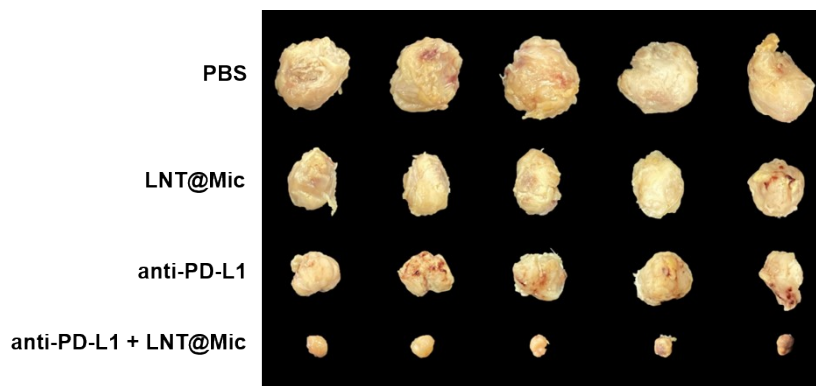


Figure S6 The pictures of isolated 4T1 tumors.

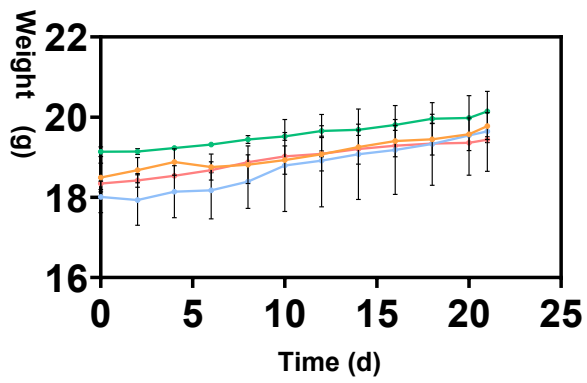


Figure S7 Body weight of 4T1 model mice during the treatment.